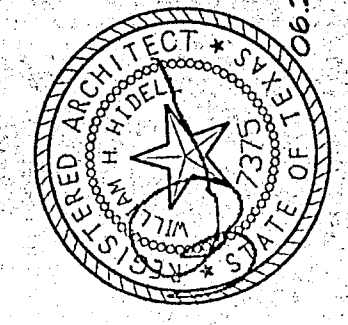


Greenhill School  
DEASON FAMILY  
TENNIS CENTER

HIDELL

ASSOCIATES  
ARCHITECTS

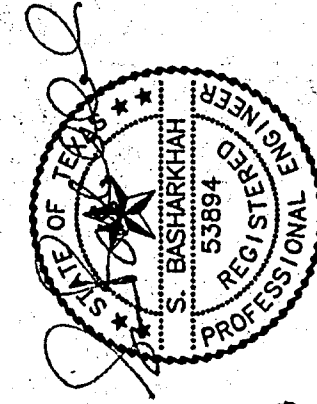
3033 KELWAY DRIVE, SUITE 120  
DALLAS, TEXAS 75245  
(972) 412-4488 FAX (972) 412-4509  
E-MAIL: hidell@hidell.com



STRUCTURAL ENGINEER  
J.R. INC.  
5445 Lo Sirena, Suite 300  
Dallas, TX 75245  
(214) 739-9100  
Fax: (214) 739-6354

CIVIL ENGINEER  
PACIFIC KOCH CONSULTING ENGINEERS  
2409 East Loop 830 N.  
Dallas, TX 75245  
(972) 235-3031  
Fax: (972) 235-9544

M.E.P. ENGINEER  
MCKENNA CONSULTING, INC.  
2409 East Loop 830 N.  
Fort Worth, Texas 76119  
Fax: (817) 590-0248



6/27/0

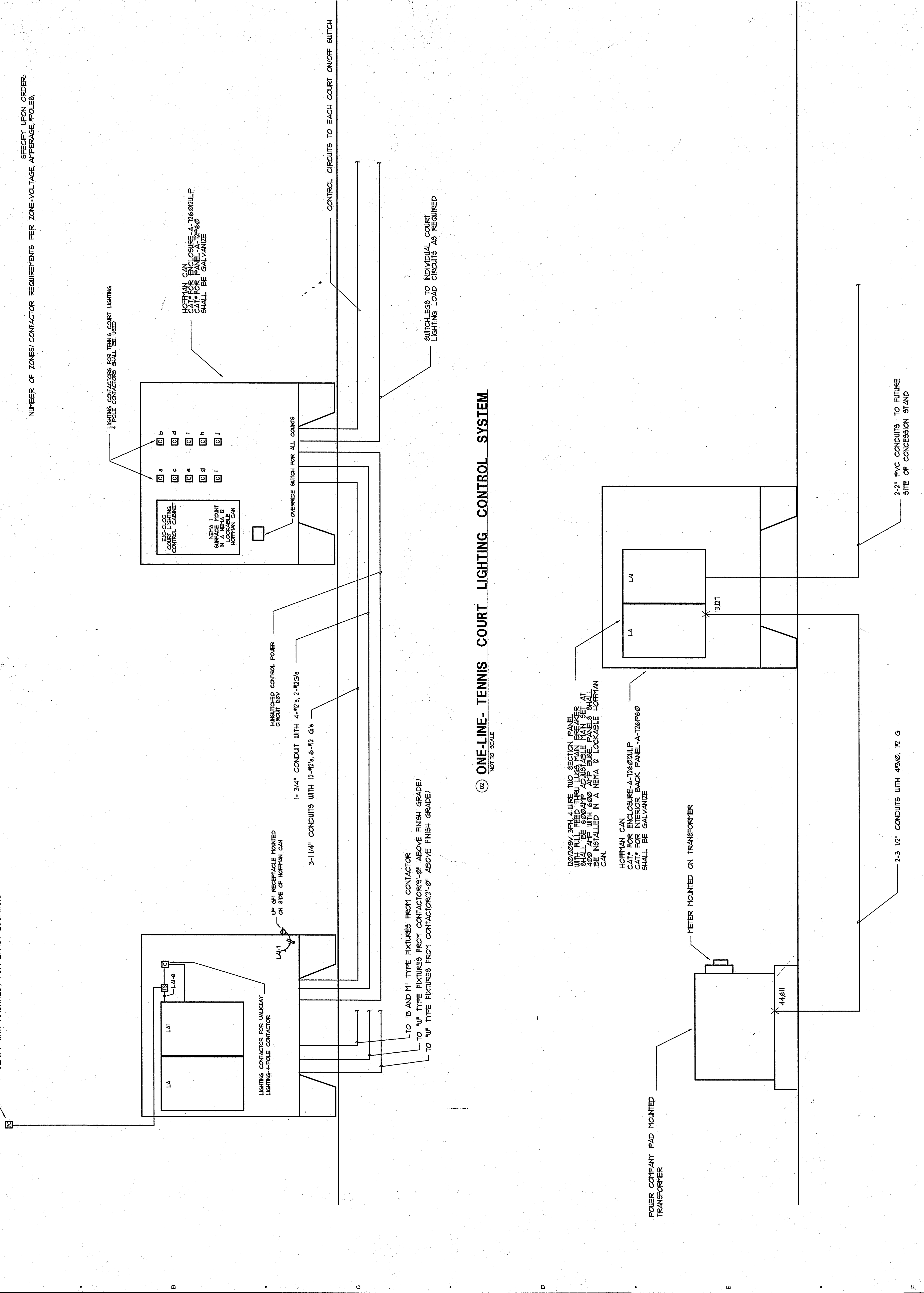
SEI Job # F\_1003040

Title	ELECTRICAL DETAILS
Revisions	
Job No.	99011
Issue Date:	JUNE 26, 2000
Drawn By:	M.H. K.T.P.
Checked By:	S.B.

Sheet No. E103

SEQUENCE OF OPERATION  
EACH COURT SHALL HAVE ITS OWN INDIVIDUAL MANUAL ON/OFF SWITCH AT EACH GATE ENTERING COURTS THERE SHALL BE AN OVERRIDE SWITCH AT PANEL LOCATION FOR TURNING ON ALL COURTS AT ONE CENTRAL LOCATION.

SPECIFY UPON ORDER:  
NUMBER OF ZONES/ CONTACTOR REQUIREMENTS PER ZONE-VOLTAGE, AMPERAGE, POLES,



02 ONE-LINE- TENNIS COURT LIGHTING CONTROL SYSTEM  
NOT TO SCALE

01 ONE-LINE ELECTRICAL DIAGRAM  
NOT TO SCALE