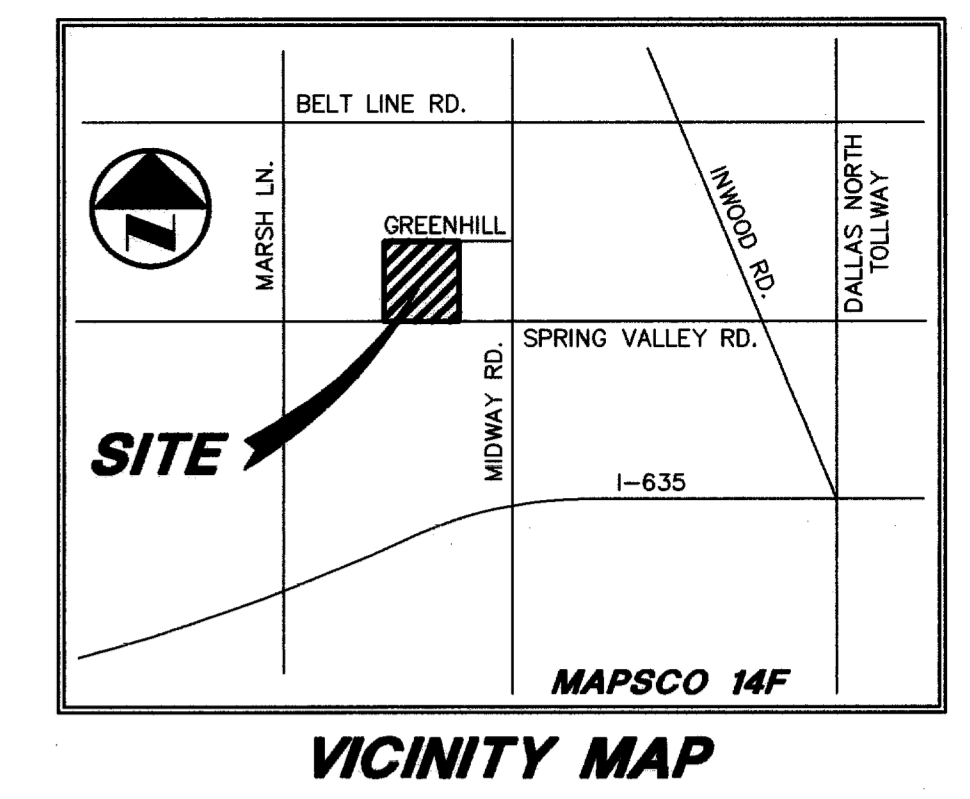
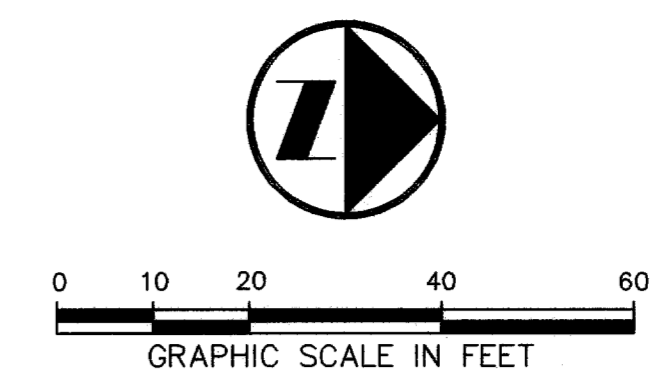


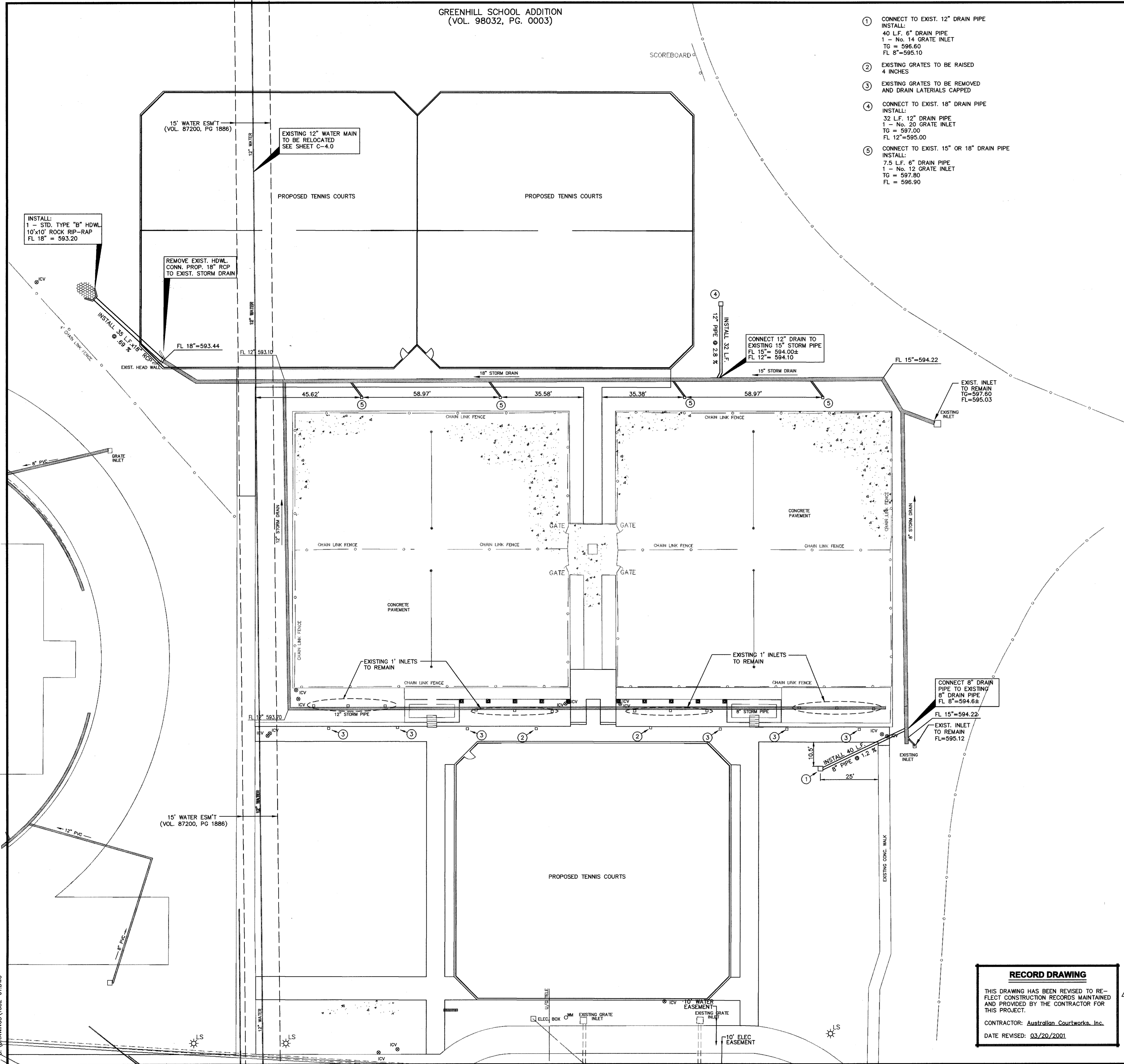
GREENHILL SCHOOL ADDITION  
(VOL. 98032, PG. 0003)



- ① CONNECT TO EXIST. 12" DRAIN PIPE  
INSTALL:  
40 L.F. 6" DRAIN PIPE  
1 - No. 14 GRATE INLET  
TG = 596.60  
FL 8" = 595.10
- ② EXISTING GRATES TO BE RAISED  
4 INCHES
- ③ EXISTING GRATES TO BE REMOVED  
AND DRAIN LATERALS CAPPED
- ④ CONNECT TO EXIST. 18" DRAIN PIPE  
INSTALL:  
32 L.F. 12" DRAIN PIPE  
1 - No. 20 GRATE INLET  
TG = 597.00  
FL 12" = 595.00
- ⑤ CONNECT TO EXIST. 15" OR 18" DRAIN PIPE  
INSTALL:  
7.5 L.F. 6" DRAIN PIPE  
1 - No. 12 GRATE INLET  
TG = 597.80  
FL 12" = 596.90

**LEGEND**

B	BOLLARD
EM	ELECTRIC METER
PP	POWER POLE
LS	LIGHT STANDARD
WM	WATER METER
WV	WATER VALVE
ICV	IRRIGATION CONTROL VALVE
FH	FIRE HYDRANT
CS	CLEANOUT
MH	MANHOLE
GM	GAS METER
TSC	TRAFFIC SIGNAL CONTROL
TSP	TRAFFIC SIGNAL POLE
TELE	TELEPHONE BOX
TV	TV BOX
FP	FLAG POLE
---	PROPERTY LINE
OHL	O.H. POWER LINES
TEL	U/G TELEPHONE LINES
W	U/G WATER LINE
G	U/G GAS LINE
- - -	FENCE



**GRADING AND DRAINAGE GENERAL NOTES**

1. REFER TO GEOTECHNICAL REPORT FOR REQUIREMENTS REGARDING FILL COMPACTION AND MOISTURE CONTENT.
2. UNLESS NOTED, ALL FILL IS TO BE COMPACTED TO A MINIMUM OF 95% STANDARD PROCTOR DENSITY WITHIN 3% OF OPTIMUM MOISTURE CONTENT. FILL TO BE PLACED IN A MAXIMUM OF 6" LIFTS.
3. ALL WALKS TO HAVE A MAXIMUM CROSS SLOPE OF 2%.
4. UNLESS NOTED, STORM DRAIN LINES MAY BE OF THE FOLLOWING MATERIALS:  
A. RCP C-76, CLASS III  
B. ADS N-12  
C. HANCOR HI-Q  
AND INSTALLED IN ACCORDANCE WITH MANUFACTURER'S SPECIFICATIONS.
5. UNLESS NOTED, GRATE INLET TO BE "AMERICAN INDUSTRIAL PRE-CAST PRODUCTS, INC." PRECAST CATCH BASIN, SIZED AS SHOWN, OF APPROVED EQUAL.
6. FINAL PAVING, CURB AND SIDEWALK ELEVATIONS WILL BE PLACED AT PLUS OR MINUS 0.03 FOOT.
7. REFER TO LANDSCAPE SPECIFICATION FOR SEEDING AND SODDING REQUIREMENTS.
8. ANY CONCRETE, ROCK OR MATERIAL DEEMED UNSUITABLE FOR SUBGRADE, BY ENGINEER, SHALL BE DISPOSED OF OFFSITE AT CONTRACTOR'S EXPENSE.
9. TRENCH BACKFILL MATERIAL SHALL CONFORM TO THE REQUIREMENTS OF NCTCOG ITEM 6.2.10, AND SHALL BE MECHANICALLY COMPACTED IN ACCORDANCE WITH NCTCOG ITEM 6.2.9 TO A MINIMUM OF 95% STANDARD PROCTOR DENSITY UNLESS OTHERWISE SHOWN ON THESE PLANS OR STATED IN THE STANDARD CITY SPECIFICATIONS.
10. EMBEDMENT SHALL CONFORM TO THE REQUIREMENTS OF NCTCOG ITEM 6.2.9 UNLESS OTHERWISE SHOWN ON THESE PLANS OR STATED IN THE STANDARD CITY SPECIFICATIONS.
11. ALL CONCRETE FOR INLETS AND DRAINAGE STRUCTURES SHALL CONFORM TO NCTCOG ITEM 7.4.5, CLASS "A" UNLESS OTHERWISE SHOWN ON THESE PLANS OR STATED IN STANDARD CITY SPECIFICATIONS.
12. CRUSHED STONE BEDDING OR APPROVED EQUAL SHALL BE PROVIDED BY THE CONTRACTOR WHEN ROCK IS ENCOUNTERED IN TRENCHES. THERE SHALL BE NO ADDITIONAL PAY ITEM OF THE CRUSHED STONE BEDDING.
13. IF REQUIRED DUE TO CONSTRUCTION, POWER POLES TO BE BRACED OR RELOCATED AT CONTRACTORS EXPENSE.
14. EXCESS DIRT FROM ON-SITE GRADING IS TO REMAIN ONSITE AND BE PLACED ALONG THE WESTERN PROPERTY LINE AS DESIGNATED BY THE PROJECT ARCHITECT.

REVISED 03/22/2001

**Pacheco Koch Consulting Engineers**  
9401 LBJ FREEWAY SUITE 300 DALLAS, TEXAS 75243 972.235.3031

**DRAINAGE PLAN**  
**GREENHILL SCHOOL**  
**DEASON FAMILY TENNIS COMPLEX**  
**DALLAS COUNTY**  
*CITY OF ADDISION, TEXAS*

DESIGN	DRAWN	DATE	SCALE	NOTES	FILE	NO.
SAM	RRL	JUNE 26 2000	1"=20'			<b>C-3.0</b>



THE SEAL APPEARING ON THIS DOCUMENT WAS AUTHORIZED BY STEVEN A. MARKUSSEN P.E. 70090 ON 05/26/00. ALTERATION OF A SEALED DOCUMENT WITHOUT PROPER NOTIFICATION TO THE RESPONSIBLE ENGINEER IS AN OFFENSE UNDER THE TEXAS ENGINEERING PRACTICE ACT.

**RECORD DRAWING**  
THIS DRAWING HAS BEEN REVISED TO REFLECT CONSTRUCTION RECORDS MAINTAINED AND PROVIDED BY THE CONTRACTOR FOR THIS PROJECT.  
CONTRACTOR: *Australian Courtworks, Inc.*  
DATE REVISED: 03/20/2001

DRAWN BY: RRL  
CHECKED BY: SAM  
DATE: 06/26/00