

3 ELECTRICAL SYMBOLS

SYMBOL	DESCRIPTION
○	CEILING OUTLET - SEE FIXTURE SCHEDULE
⊗	EXIT LIGHT
○ ps	LAMP HOLDER WITH PULL SWITCH
○ 1	BRACKET LIGHT
□	RECESSED LIGHTING FIXTURE
□	FLUORESCENT FIXTURE
⊙	JUNCTION BOX
⊙	CLOCK OUTLET
⊙	DUPLEX CONVENIENCE OUTLET
⊙ w.p.	WEATHERPROOF CONVENIENCE OUTLET
⊙	FLOOR OUTLET
⊙	TELEPHONE FLOOR OUTLET
▶	TELEPHONE OUTLET
S	SINGLE POLE SWITCH
S ₃	THREE WAY SWITCH
S ₄	FOUR WAY SWITCH
S _p	SWITCH & PILOT LAMP
S _{w.p.}	WEATHERPROOF SWITCH
S _{w.p.}	MANUAL MOTOR SWITCH (P INDICATES PILOT)
---	BRANCH CIRCUIT IN CEILING OR WALL
---	BRANCH CIRCUIT IN FLOOR
	NEUTRAL, HOT & SWITCH LEG
←	HOME RUN TO PANEL BOARD
▽	INTERCOMMUNICATION OUTLET
▽	SPEAKER OUTLET
▽	SPEAKER OUTLET IN CEILING
▽	MICROPHONE OUTLET
▽	BUZZER
▽	BELL
▽	PUSH BUTTON
▽	MOTOR WITH HORSEPOWER
▽	CONTROLLER
▽ w.p.	DISCONNECT SWITCH (W.P. INDICATES WEATHERPROOF)
▽ w.p.	START-STOP PUSH BUTTON STATION (P INDICATES PILOT)
⊖	THERMOSTAT

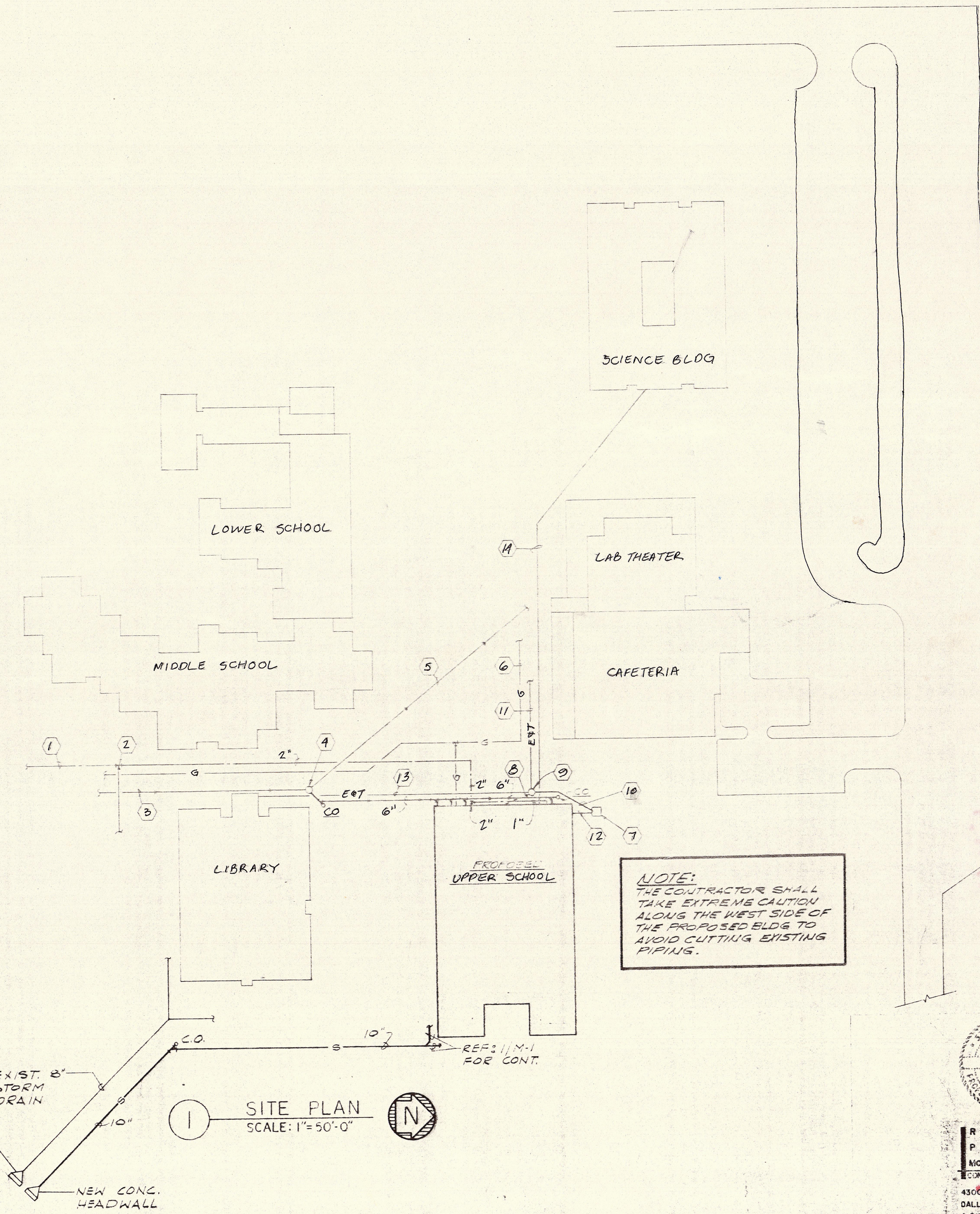
2 DESIGN CRITERIA

DESIGN CONDITIONS		
SUMMER	INSIDE	75°DB, 50% RH
	OUTSIDE	100°DB 75°WB
WINTER	INSIDE	75°
	OUTSIDE	10°
AIR CONDITIONING		
TOTAL COOLING		713 MBH
TOTAL CFM SUPPLY		24100 CFM
TOTAL CFM O.A.		1950 CFM
SYSTEM	ROOFTOP UNITS WITH DX COOLING & GAS FIRED HEATING	
HEATING		
TOTAL HEAT OUTPUT		1065 MBH
TOTAL HEAT INPUT		1420 MBH
FUEL		NAT. GAS
ELECTRICAL		
SERVICE		277/480V 3Ø, 4W
CONNECTED LOAD		285.9
DESIGN LOAD INCL. SPARE		278.0
SPARE		52.0

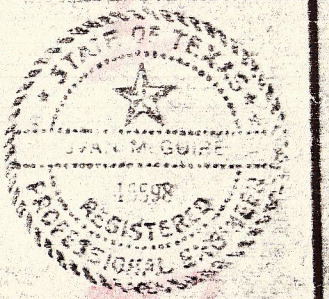
4 MECHANICAL SYMBOLS

SYMBOL	DESCRIPTION
S	STORM DRAINAGE
—	SANITARY WASTE
—	SANITARY VENT
—	DOMESTIC COLD WATER
—	DOMESTIC HOT WATER
—	DOMESTIC HOT WATER RECIRC.
D	DRAIN LINE
G	GAS SUPPLY
RL	REFRIGERANT LIQUID
RS	REFRIGERANT SUCTION
HG	REFRIGERANT HOT GAS DISCHARGE
⊗	GATE VALVE
⊗	BUTTERFLY VALVE
⊗	CHECK VALVE
⊗	MOTORIZED CONTROL VALVE (SEE PLAN AND SPEC'S)
⊗	GLOBE VALVE
⊗	NEEDLE VALVE
⊗	BALANCING COCK
⊗	GAS COCK
F.D.X	FLOOR DRAIN (WITH TYPE - SEE SPEC'S)
A.D.	AREA DRAIN
S.D.	SHOWER DRAIN
R.D.	ROOF DRAIN
B.H.	BOX HYDRANT
W.H.	WALL HYDRANT
H.B.	HOSE BIBB

- NOTES:**
- EXIST 4" WATER LINE
 - CONNECT NEW 2" WATER SERVICE TO EXIST 4" WATER LINE
 - EXIST 8" SANITARY SEWER LINE
 - CONNECT NEW 6" SAN SEWER TO EXIST MANHOLE INVERT ELEVATION
 - EXIST 6" SANITARY SEWER LINE
 - EXIST 5" GAS LINE
 - REMOVE EXIST CONC PAD, & REINFORC BY TR & L
 - NEW UNDERGROUND 1" PVC TELEPHONE SERVICE CONNECT INTO TELE PULL BOX & TERMINATE INSIDE THE BLDG IN Rm 127 AT THE TELE TERM BRO
 - ELEC & TELE FEEDER PULL BOX DISCONNECT THE EXIST ELEC FEEDER FROM THE EXIST SWITCHBOARD IN THE CENTRAL PLANT BLDG & CONNECT THE NEW SERV FEEDER FOR THE LIBRARY & PRESCHOOL
 - NEW UNDERGROUND SERVICE FOR LIBRARY & PRESCHOOL CONNECT 4" ELEC MCM IN 3/4" C FROM THE PAD MID TRANS TO THE PULLBOX
 - EXIST ELEC & TELE FEED FROM THE CENTRAL PLANT BLDG DISCONNECT THE ELEC FEEDER AT THE SWITCHBOARD AND ABANDON
 - NEW UPPER SCHOOL UNDERGROUND ELEC SERVICE ENTR. REF: 11E-3
 - EXIST ELEC & TELE FEED TO LIBRARY PANEL REMOVE THE EXIST CONDUCTORS & REPLACE WITH 4" 500 MCM THHN.
 - NEW UNDERGROUND 1" C W/ 3 #12 WIRES FOR EXTENSION OF PROGRAM CLOCK SYSTEM TO NEW UPPER SCHOOL. REF: 11E-2



B16-2



**RATLIFF
PURDY
MCGUIRE**
CONSULTING ENGINEERS
4300 SIGMA ROAD
DALLAS, TEXAS 75234
A.C. 214 259-5357

REGISTERED ARCHITECT • STATE OF TEXAS

Oglesby, Wiley, Halford, Johnson

Oglesby Group, Inc.

1425 MIDWAY ROAD, ADDISON, TEXAS

DATE: 30 July 1974 JOB: 11354 DR: EY

SHEET NO. **ME-1** OF **1/16-2**