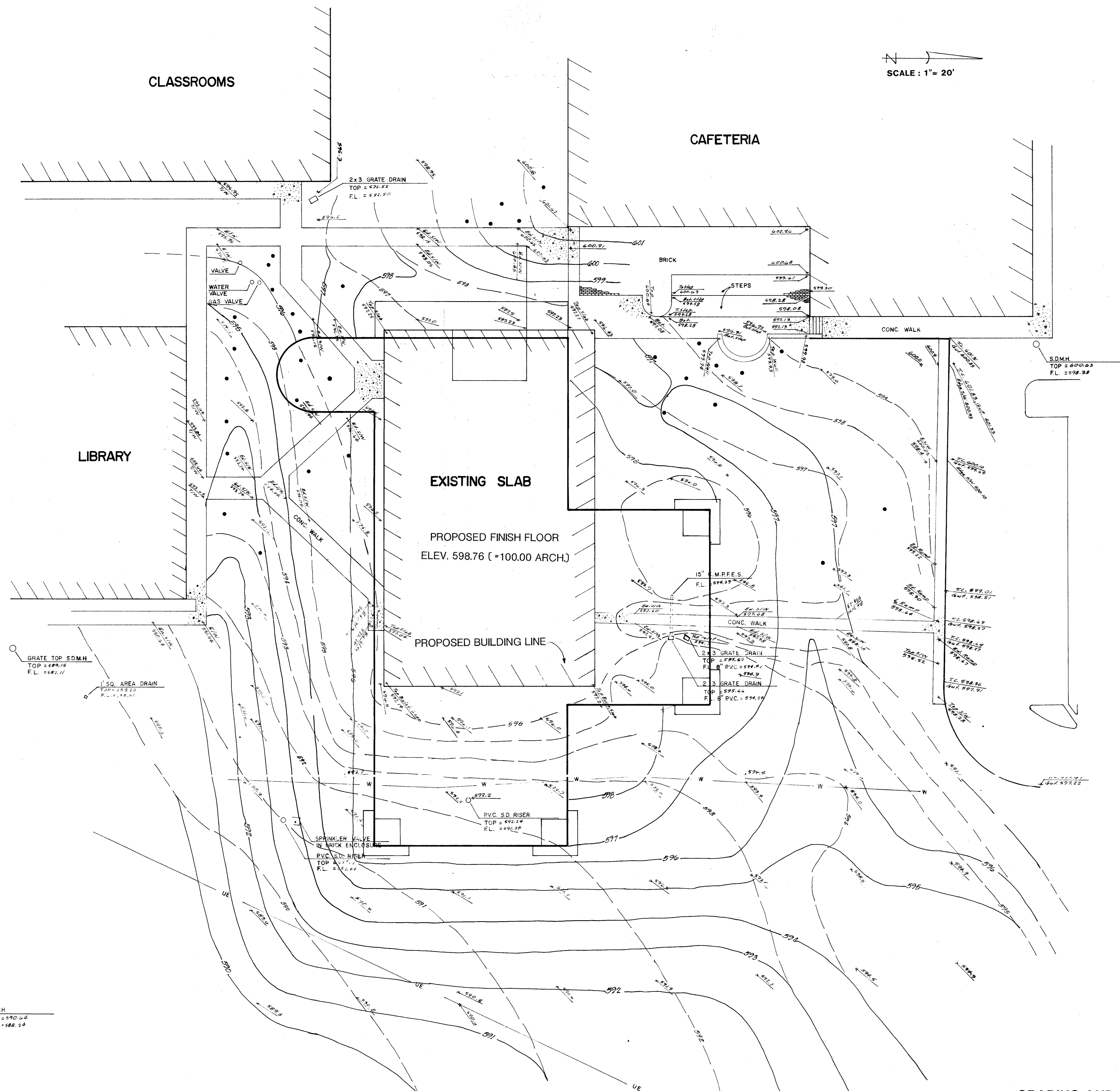


**GREENHILL
UPPER
SCHOOL**



N
SCALE: 1" = 20'

LEGEND
 --- Existing Contours
 --- Proposed Contours
 * Existing Elevations

GRADING AND DRAINAGE PLAN

HIDELL

ARCHITECTS

2811 MCKINNEY AVENUE, SUITE 207
DALLAS, TEXAS 75204 214 855-0335



PHILIP HENDERSON
CONSULTING ARCHITECT
3600 CONGRESS ST.
DALLAS, TEXAS 75219 214 826-3412

RAYMOND L. GOODSON, INC.
STRUCTURAL ENGINEERS
10300 N. CENTRAL EXPWY., SUITE 200
DALLAS, TEXAS 75231 214 739-8100

WALTER CASH & PARTNERS
MECHANICAL ENGINEERS
1001 ROSS, SUITE 400
DALLAS, TEXAS 75202 214 954-4400

Revisions:

Job No. 87005
 Issue Date: 7-1-87
 Drawn By: PSA
 Checked By: _____
 Sheet No. C-1

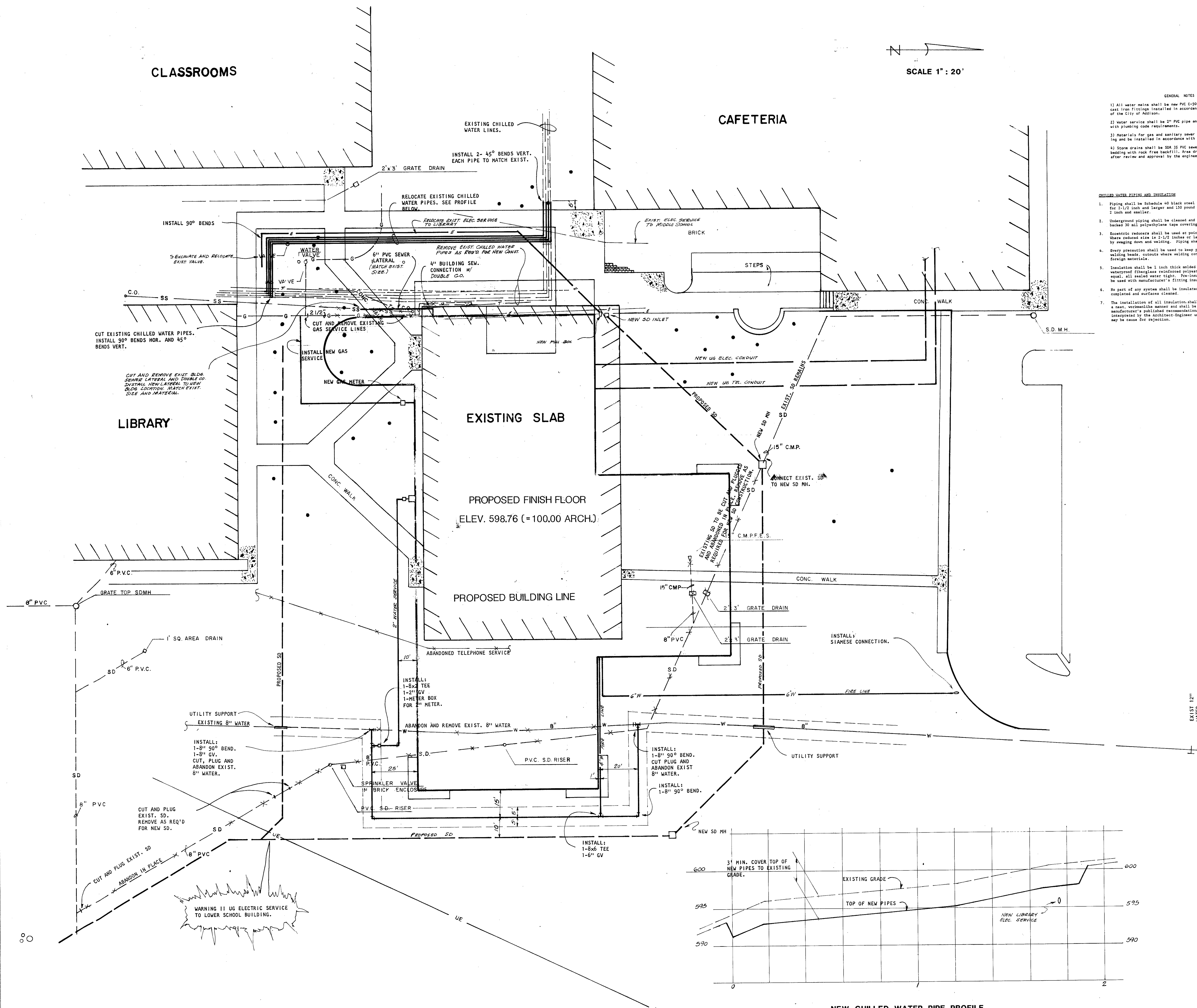
of:

**GREENHILL
UPPER
SCHOOL**

SCALE 1" = 20'

- GENERAL NOTES**
- 1) All water mains shall be new PVC C-900, Class 200 pipe with new cast iron fittings installed in accordance with the requirements of the City of Addison.
 - 2) Water service shall be 2" PVC pipe and installed in accordance with plumbing code requirements.
 - 3) Materials for gas and sanitary sewer lateral shall match existing and be installed in accordance with plumbing code requirements.
 - 4) Storm drains shall be SDR 35 PVC sewer pipe installed on gravel bedding with rock free backfill. Area drain inlets may be precast after review and approval by the engineer.

- CHILLED WATER PIPING AND INSULATION**
1. Piping shall be Schedule 40 black steel pipe with tube turn welding fittings for 2-1/2 inch and larger and 150 pound malleable iron screwed fittings for 2 inch and smaller.
 2. Underground piping shall be cleaned and primed and wrapped with adhesive-backed 30 mil polyethylene tape covering all metallic surfaces.
 3. Eccentric reducers shall be used at points where main size is reduced. Unseamed side is 2-1/2 inches or larger, eccentric reducers may be used by swaging down and welding. Piping shall be run with top of pipe level.
 4. Every precaution shall be used to keep piping clean and free from dirt, welding spatter, quench where welding connections are made, and all other foreign material.
 5. Insulation shall be 1 inch thick welded urethane pipe insulation. Provide waterproof fiberglass reinforced polyester jacket, PVC jacket, or approved equal, all sealed water tight. Fiberglass (factory applied) piping may be used with manufacturer's fitting insulation mold and foam kits.
 6. No part of any system shall be insulated until all required tests have been completed and surfaces cleaned.
 7. The installation of all insulation shall be made by experienced craftsmen in a neat, workmanlike manner and shall be in strict accordance with the manufacturer's published recommendations for service intended, as interpreted by the Architect-Engineer unless otherwise noted. Appearance may be cause for rejection.



HIDELL

ARCHITECTS

2811 MCKINNEY AVENUE, SUITE 207
DALLAS, TEXAS 75204 214/ 858-0335



David Whitaker 7-1-87

PHILIP HENDERSON
CONSULTING ARCHITECT
3600 CONGRESS ST.
DALLAS, TEXAS 75219 214 526-3412

RAYMOND L. GOODSON, INC.
STRUCTURAL ENGINEERS
10300 N. CENTRAL EXPWY., SUITE 200
DALLAS, TEXAS 75231 214 739-8100

WALTER CASH & PARTNERS
MECHANICAL ENGINEERS
1001 ROSS, SUITE 400
DALLAS, TEXAS 75202 214 954-4400

Revisions

No.	Description

Job No. 87005
Issue Date: 7-1-87
Drawn By: PSA
Checked By:
Sheet No. C-2

of:

NEW CHILLED WATER PIPE PROFILE
1" = 20' HOR. 1" = 5' VERT. **UTILITY PLAN**

**GREENHILL
UPPER
SCHOOL**

HIDELL

ARCHITECTS

2811 MCKINNEY AVENUE, SUITE 207
DALLAS, TEXAS 75204 (214) 855-0336

David Whitaker 7-1-87

PSA ENGINEERING
CIVIL ENGINEERS
13747 MONROE DR.
DALLAS, TEXAS 75240 214 960-1137

Revisions

ADDED SD SIZES & NOTES; N/C NOTE 7-10-87
REVISED FOR FINAL DESIGN & CITY 7-20-87

Job No. 87005

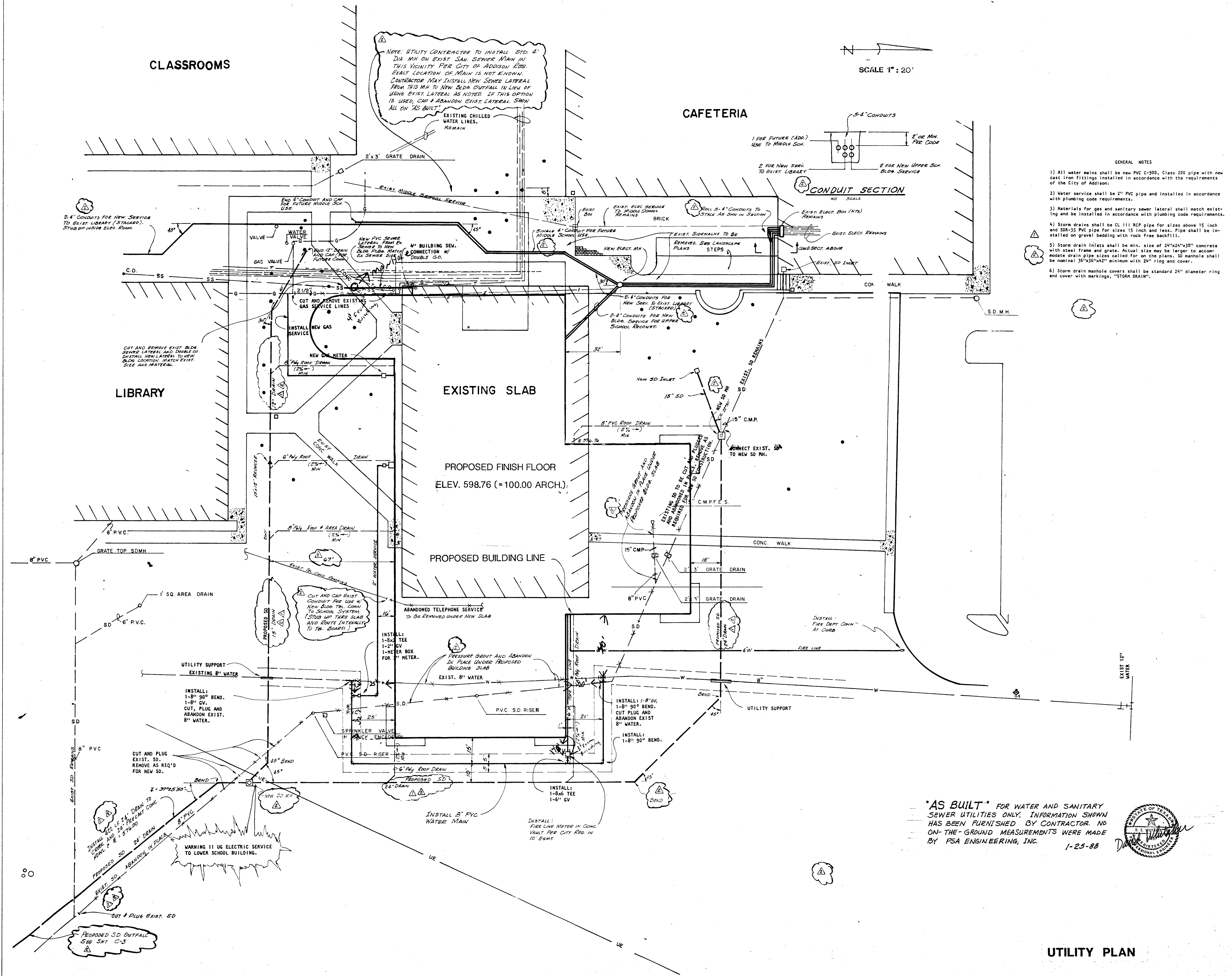
Issue Date: 7-1-87

Drawn By: PSA

Checked By:

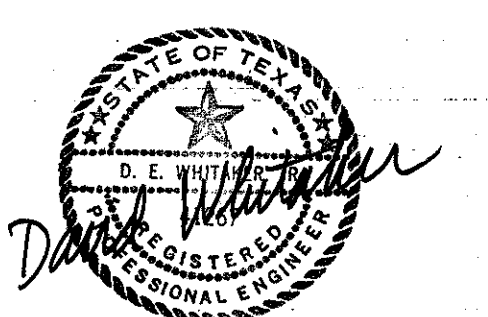
Sheet No. C-2

of:



- GENERAL NOTES**
- 1) All water mains shall be new PVC C-900, Class 200 pipe with new cast iron fittings installed in accordance with the requirements of the City of Addison.
 - 2) Water service shall be 2" PVC pipe and installed in accordance with plumbing code requirements.
 - 3) Materials for gas and sanitary sewer lateral shall match existing and be installed in accordance with plumbing code requirements.
 - 4) Storm drains shall be CL III RCP pipe for sizes above 15 inch and SDR-35 PVC pipe for sizes 15 inch and less. Pipe shall be installed on gravel bedding with rock free backfill.
 - 5) Storm drain inlets shall be min. size of 24"x24"x30" concrete with steel frame and grate. Actual size may be larger to accommodate drain pipe sizes called for on the plans. SD manhole shall be nominal 36"x36"x42" minimum with 24" ring and cover.
 - 6) Storm drain manhole covers shall be standard 24" diameter ring and cover with markings, "STORM DRAIN".

"AS BUILT" FOR WATER AND SANITARY SEWER UTILITIES ONLY. INFORMATION SHOWN HAS BEEN FURNISHED BY CONTRACTOR. NO ON-THE-GROUND MEASUREMENTS WERE MADE BY PSA ENGINEERING, INC. 1-25-88



UTILITY PLAN

**GREENHILL
UPPER
SCHOOL**

HIDELL

ARCHITECTS

2811 MCKINNEY AVENUE, SUITE 207
DALLAS, TEXAS 75204 (214) 855-0336

David Whetzer 7-1-87

PSA ENGINEERING
CIVIL ENGINEERS
12747 MONTFORT DR.
DALLAS, TEXAS 75240 214 960-1127

Revisions

ADDED SD SIZES & NOTES; N/C NOTE 7-10-87
REVISED FOR FINAL DESIGN & CITY 7-20-87

Job No. 87005

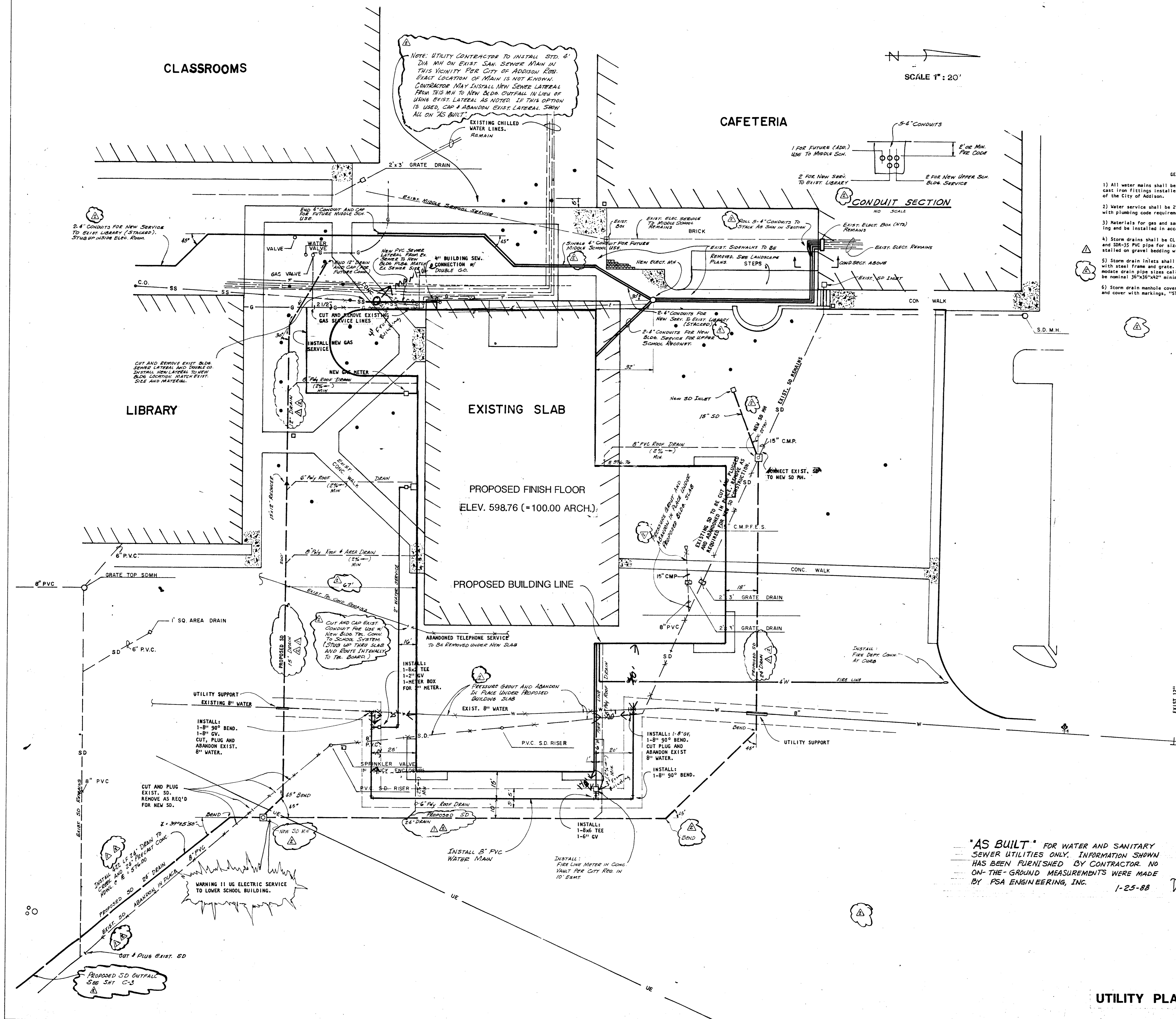
Issue Date: 7-1-87

Drawn By: PSA

Checked By:

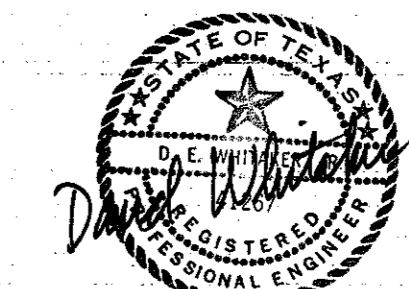
Sheet No. C-2

of:

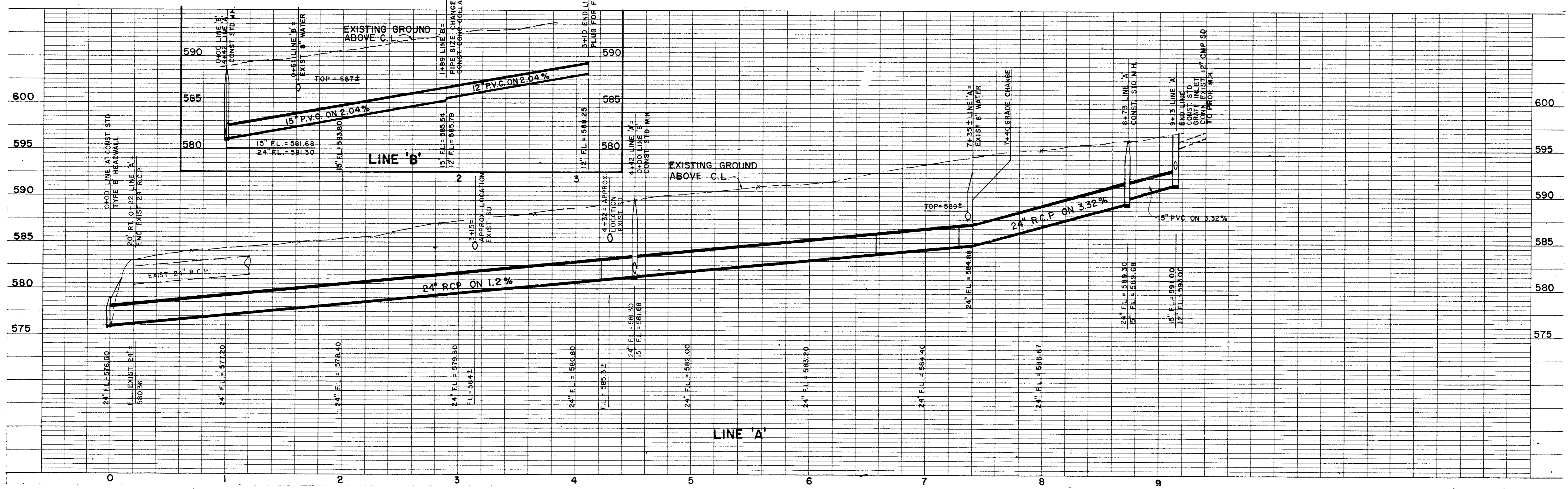
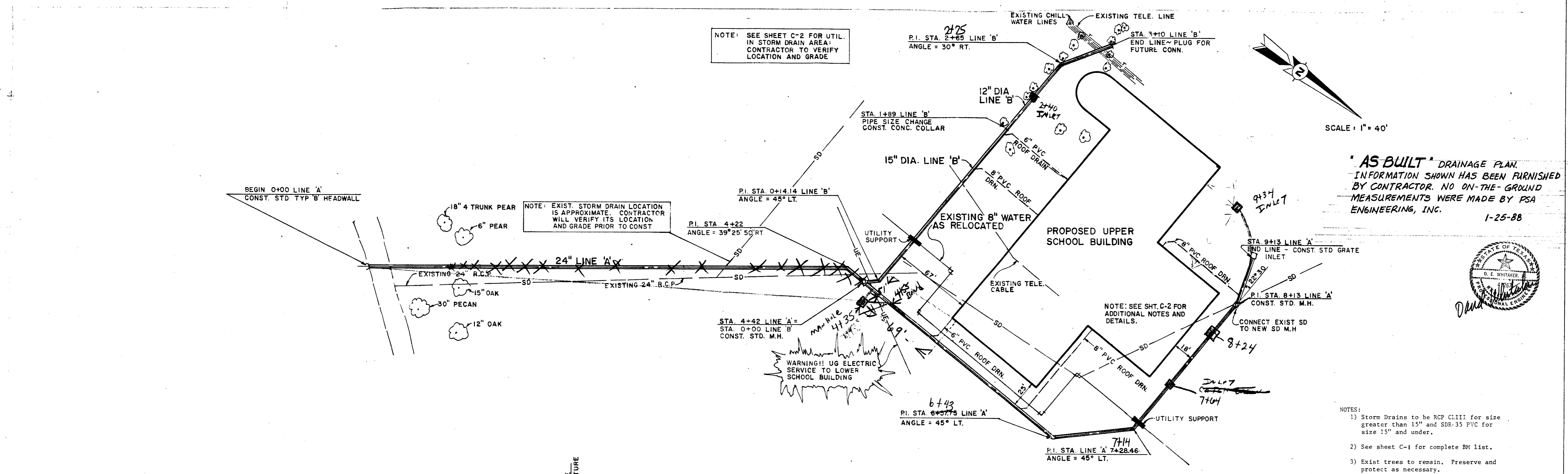


- GENERAL NOTES
- 1) All water mains shall be new PVC C-900, Class 200 pipe with new cast iron fittings installed in accordance with the requirements of the City of Addison.
 - 2) Water service shall be 2" PVC pipe and installed in accordance with plumbing code requirements.
 - 3) Materials for gas and sanitary sewer lateral shall match existing and be installed in accordance with plumbing code requirements.
 - 4) Storm drains shall be CL III RCP pipe for sizes above 15 inch and SDR-35 PVC pipe for sizes 15 inch and less. Pipe shall be installed on gravel bedding with rock free backfill.
 - 5) Storm drain inlets shall be min. size of 24"x24"x30" concrete with steel frame and grate. Actual size may be larger to accommodate drain pipe sizes called for on the plans. SD manhole shall be nominal 36"x36"x42" minimum with 24" ring and cover.
 - 6) Storm drain manhole covers shall be standard 24" diameter ring and cover with markings, "STORM DRAIN".

"AS BUILT" FOR WATER AND SANITARY SEWER UTILITIES ONLY. INFORMATION SHOWN HAS BEEN FURNISHED BY CONTRACTOR. NO ON-THE-GROUND MEASUREMENTS WERE MADE BY PSA ENGINEERING, INC. 1-25-88



UTILITY PLAN



- NOTES:
- 1) Storm Drains to be RCP CLIII for size greater than 15" and SDR-35 PVC for size 15" and under.
 - 2) See sheet C-1 for complete BM list.
 - 3) Exist trees to remain. Preserve and protect as necessary.

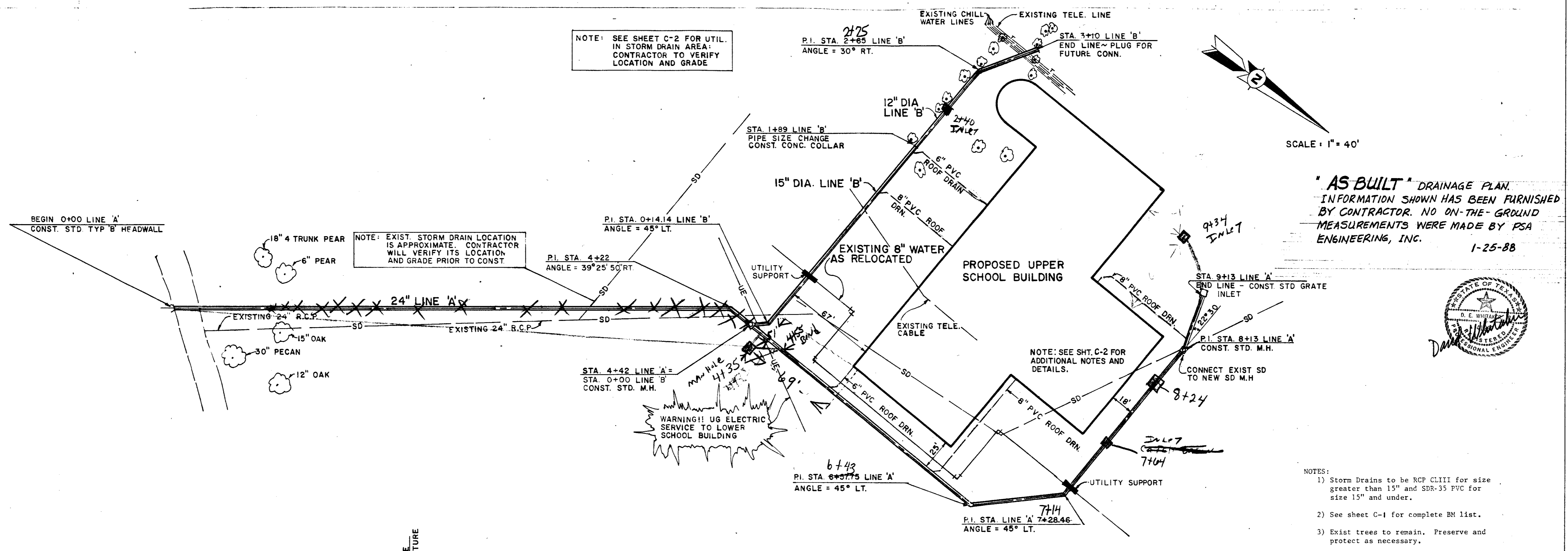
DRAINAGE PROFILE

D. E. Whitaker 7-27-87

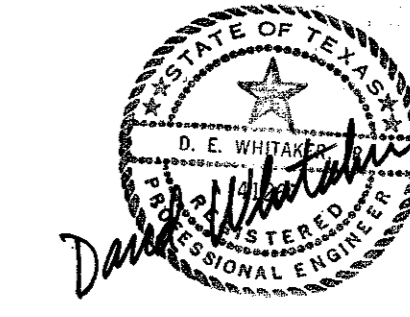
Revisions

Job No. 87005
Issue Date: AUGUST 15, 1987
Drawn By: PSA
Checked By: _____
Sheet No. C-3

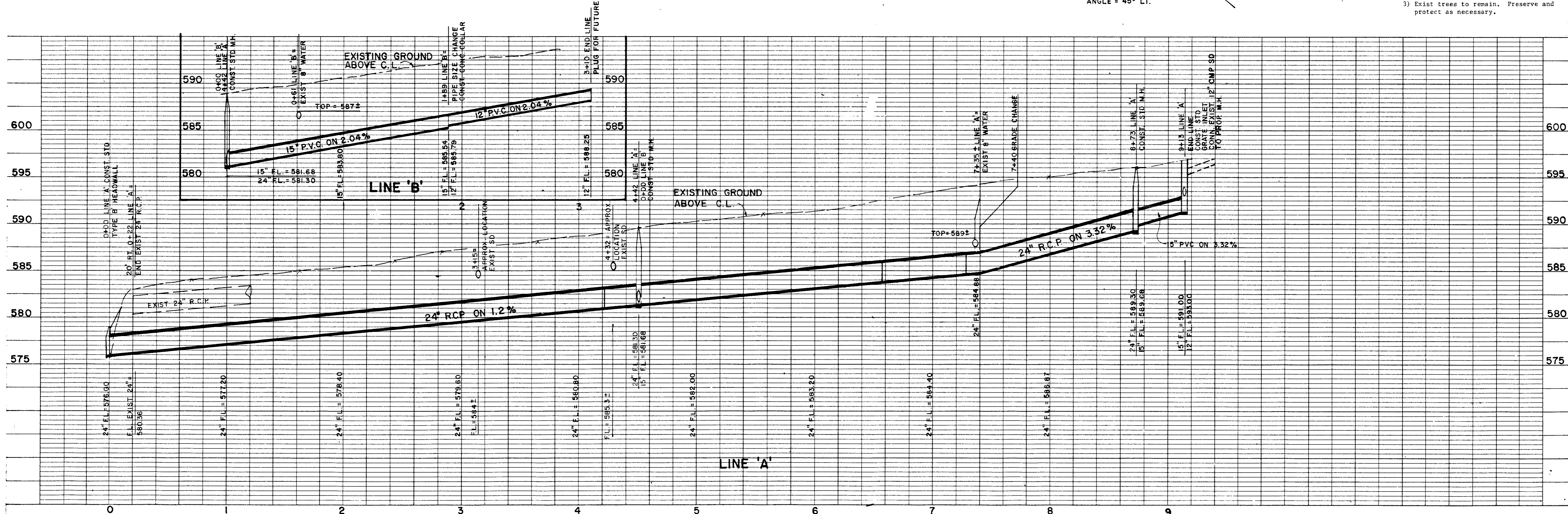
of:



"AS BUILT" DRAINAGE PLAN.
INFORMATION SHOWN HAS BEEN FURNISHED
BY CONTRACTOR. NO ON-THE-GROUND
MEASUREMENTS WERE MADE BY PSA
ENGINEERING, INC. 1-25-88



- NOTES:
- Storm Drains to be RCP CLIII for size greater than 15" and SD-35 PVC for size 15" and under.
 - See sheet C-1 for complete BM list.
 - Exist trees to remain. Preserve and protect as necessary.



DRAINAGE PROFILE

ARCHITECTS

2811 MCKINNEY AVENUE, SUITE 207
DALLAS, TEXAS 75204 (214) 855-0335

David Whitaker 7-27-87

PSA ENGINEERING
CIVIL ENGINEERS
13747 MONTFORT DR.
DALLAS, TEXAS 75240 214 960-1137

Revisions

Job No. 87005
Issue Date: August 15, 1987
Drawn By: PSA
Checked By: _____
Sheet No. C-3

of: