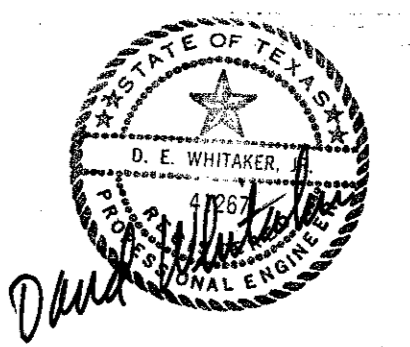
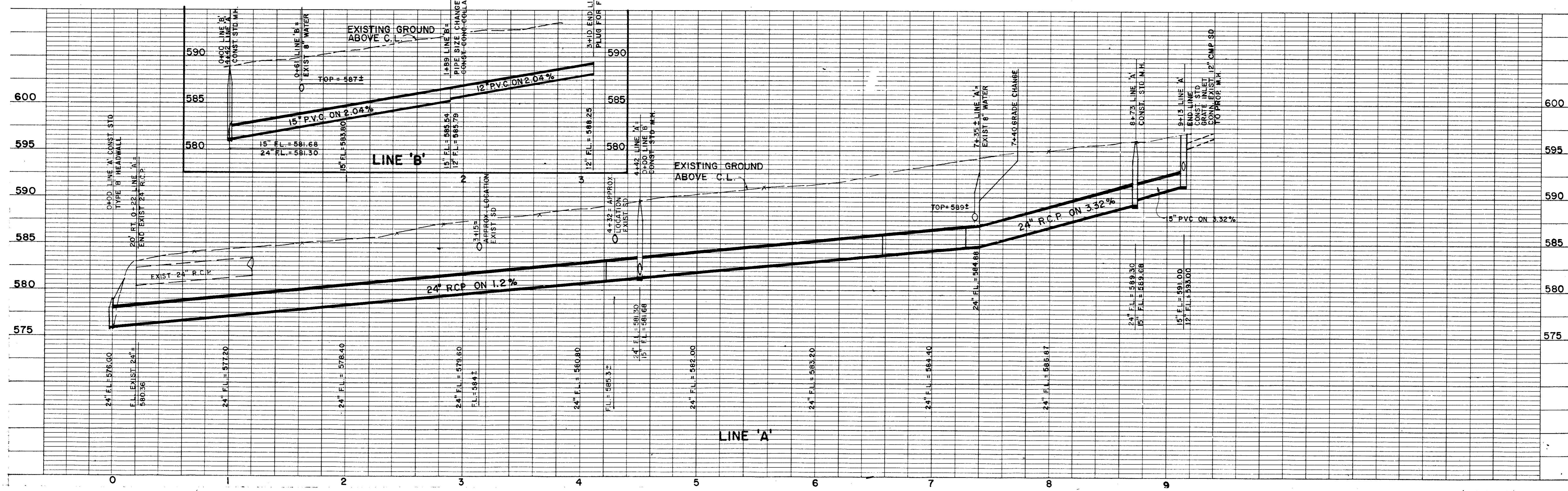


**"AS BUILT" DRAINAGE PLAN.**  
INFORMATION SHOWN HAS BEEN FURNISHED  
BY CONTRACTOR. NO ON-THE-GROUND  
MEASUREMENTS WERE MADE BY PSA  
ENGINEERING, INC.  
1-25-88



- NOTES:
- 1) Storm Drains to be RCP CLIII for size greater than 15" and SDR-35 PVC for size 15" and under.
  - 2) See sheet C-1 for complete BM list.
  - 3) Exist trees to remain. Preserve and protect as necessary.



DRAINAGE PROFILE

Revisions


Job No. 87005

Issue Date: AUGUST 15, 1987

Drawn By: PSA

Checked By:

Sheet No. C-3

of: