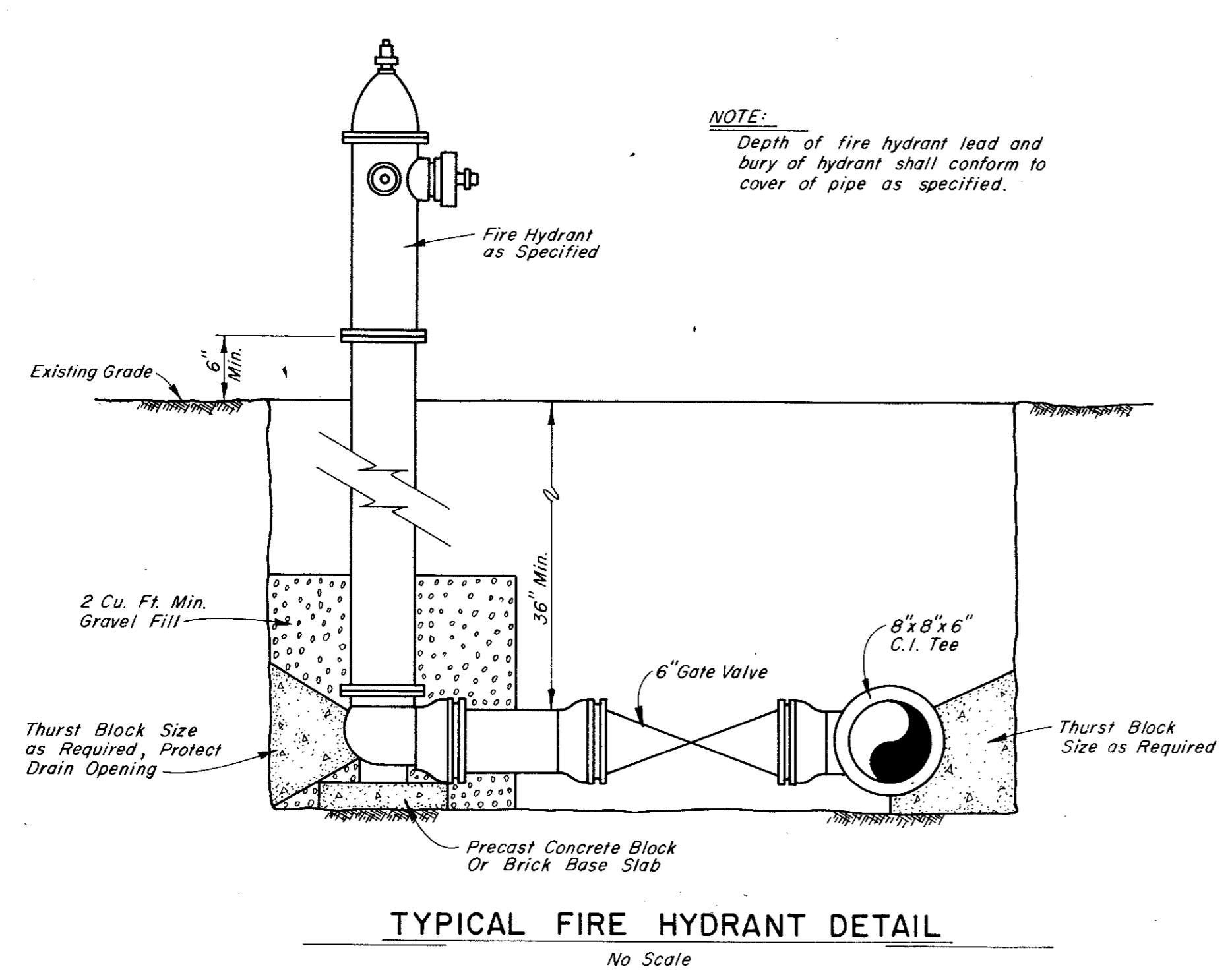
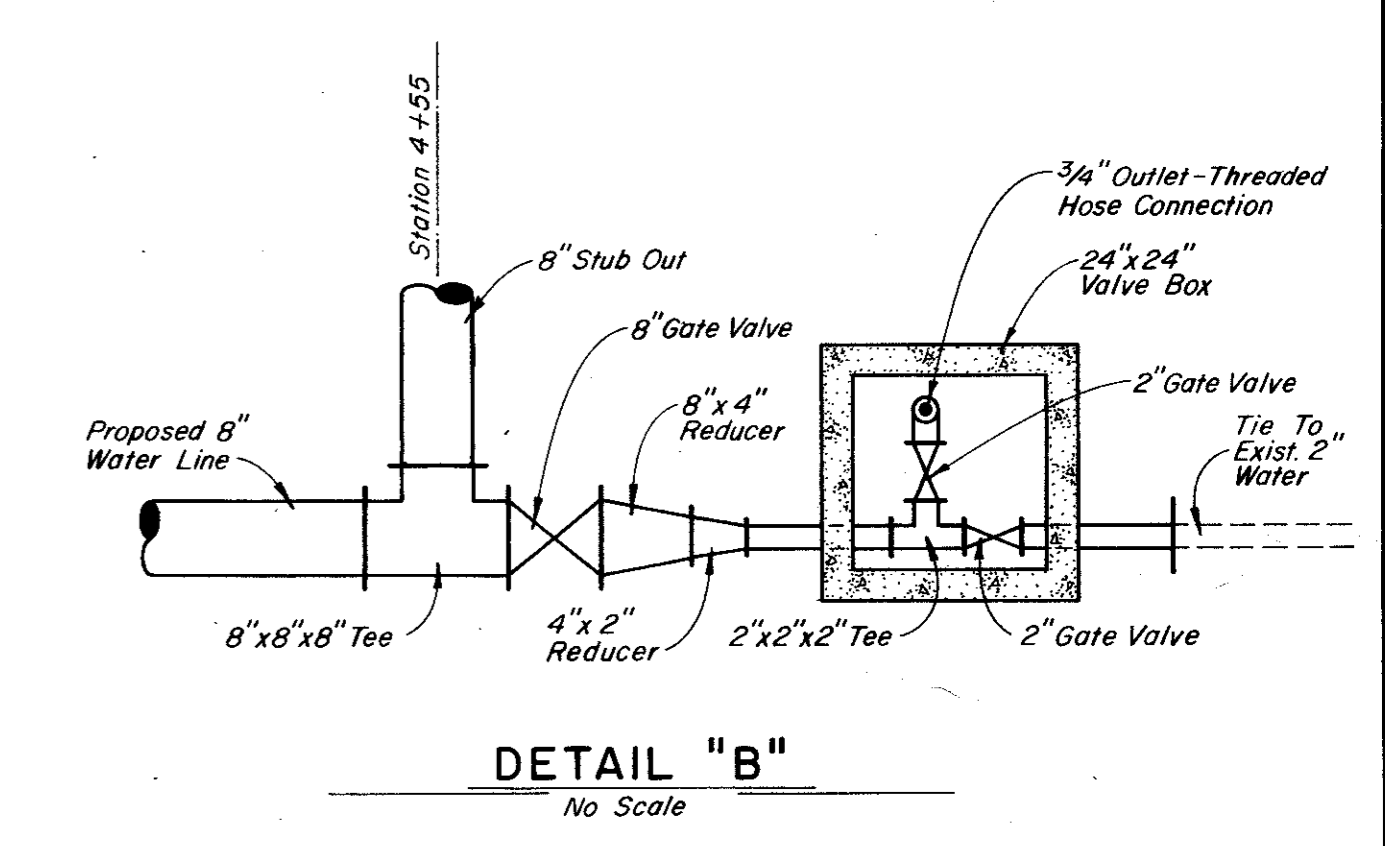
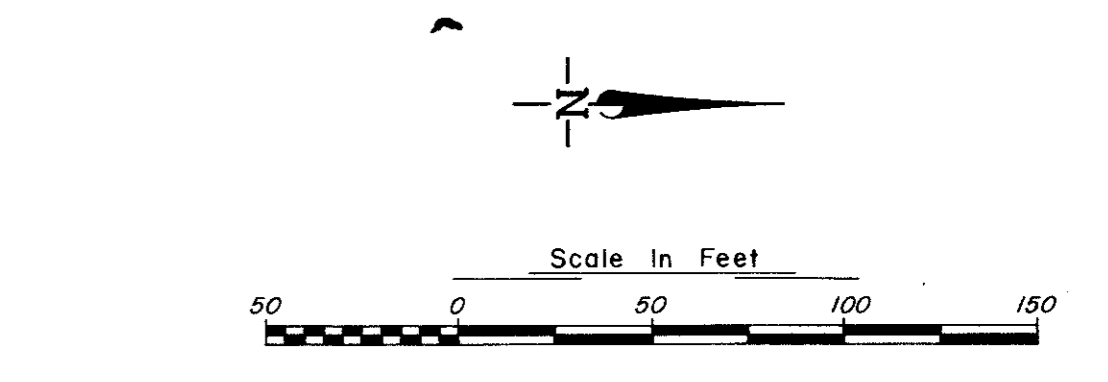
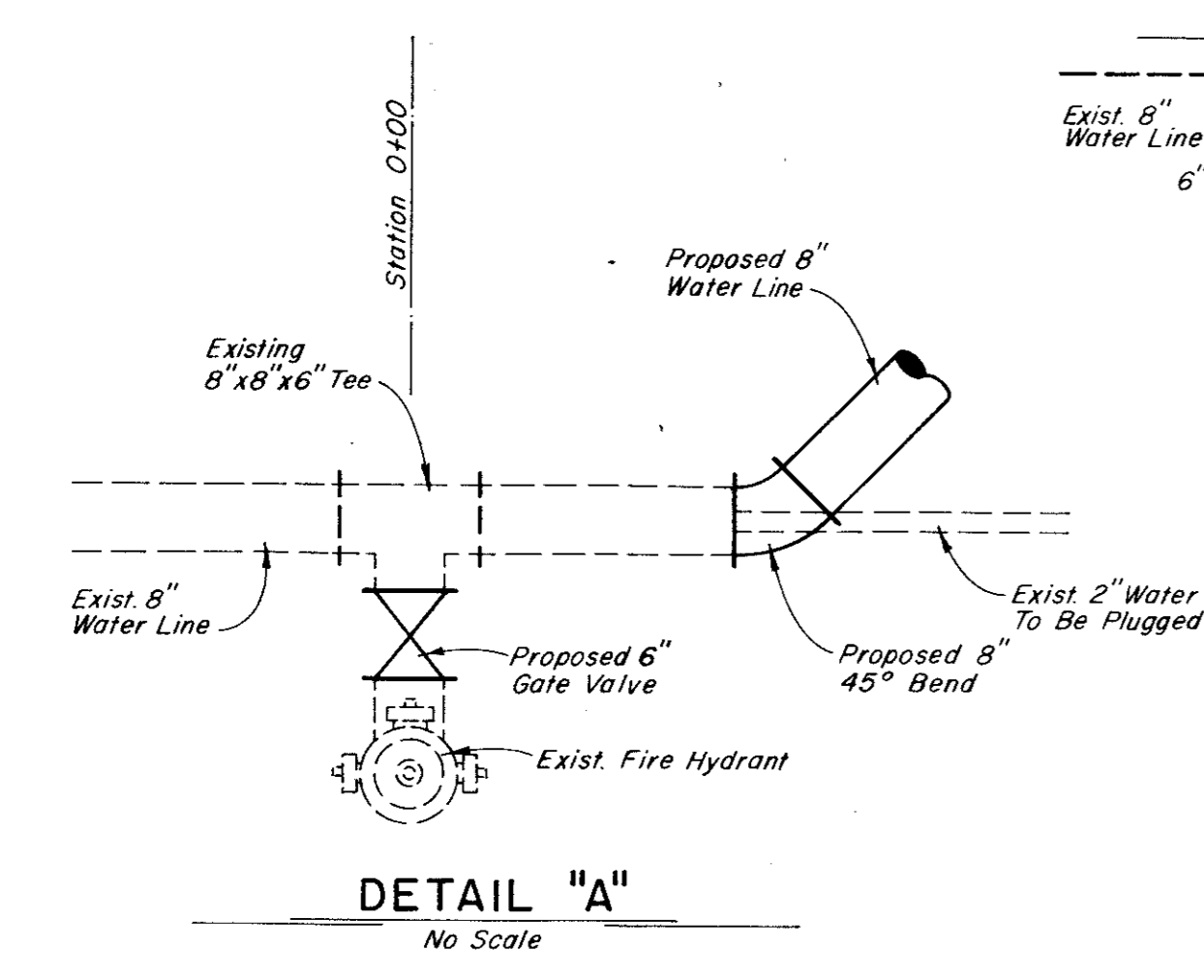
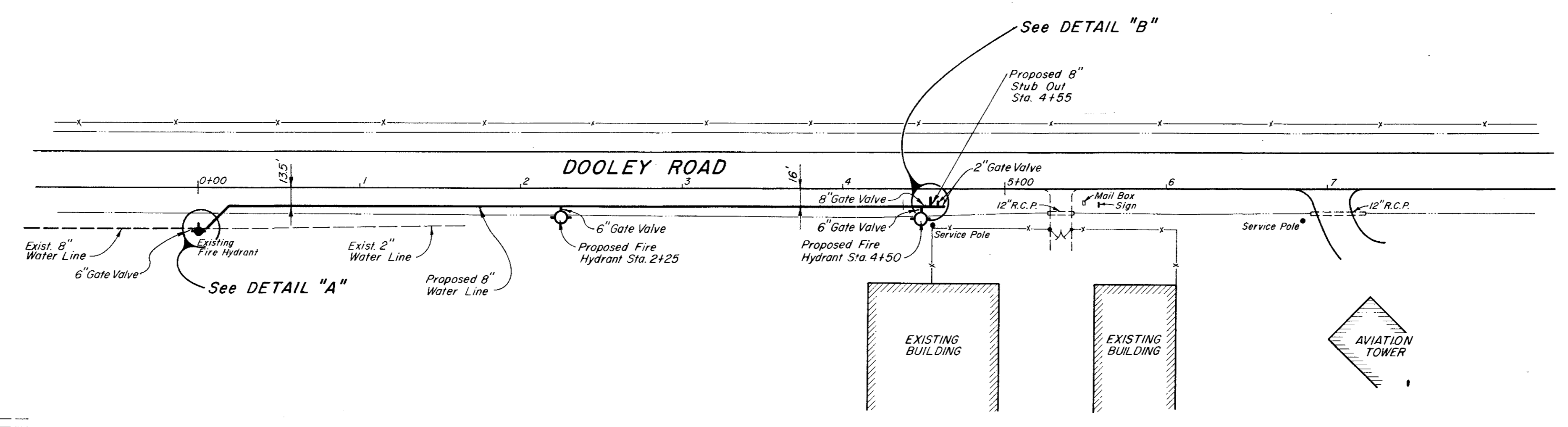
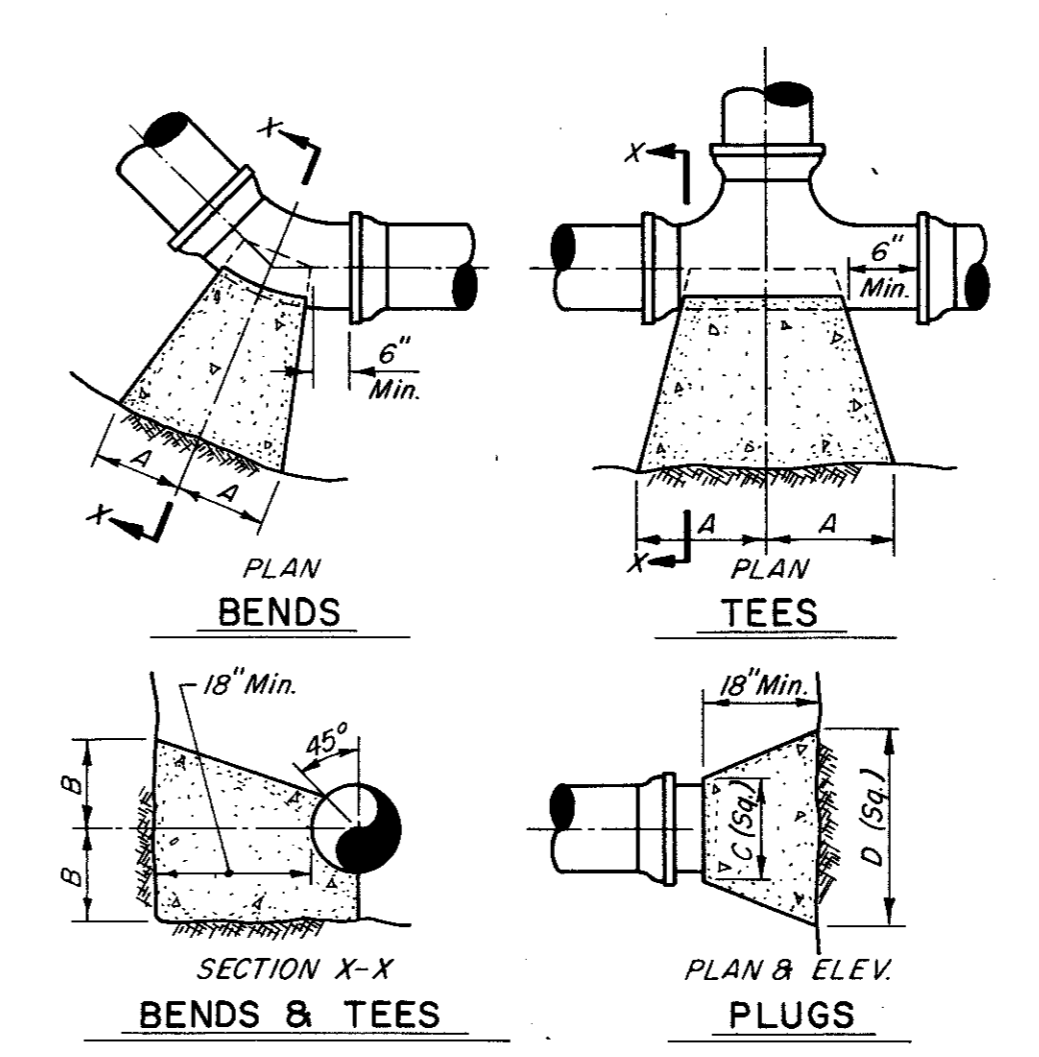
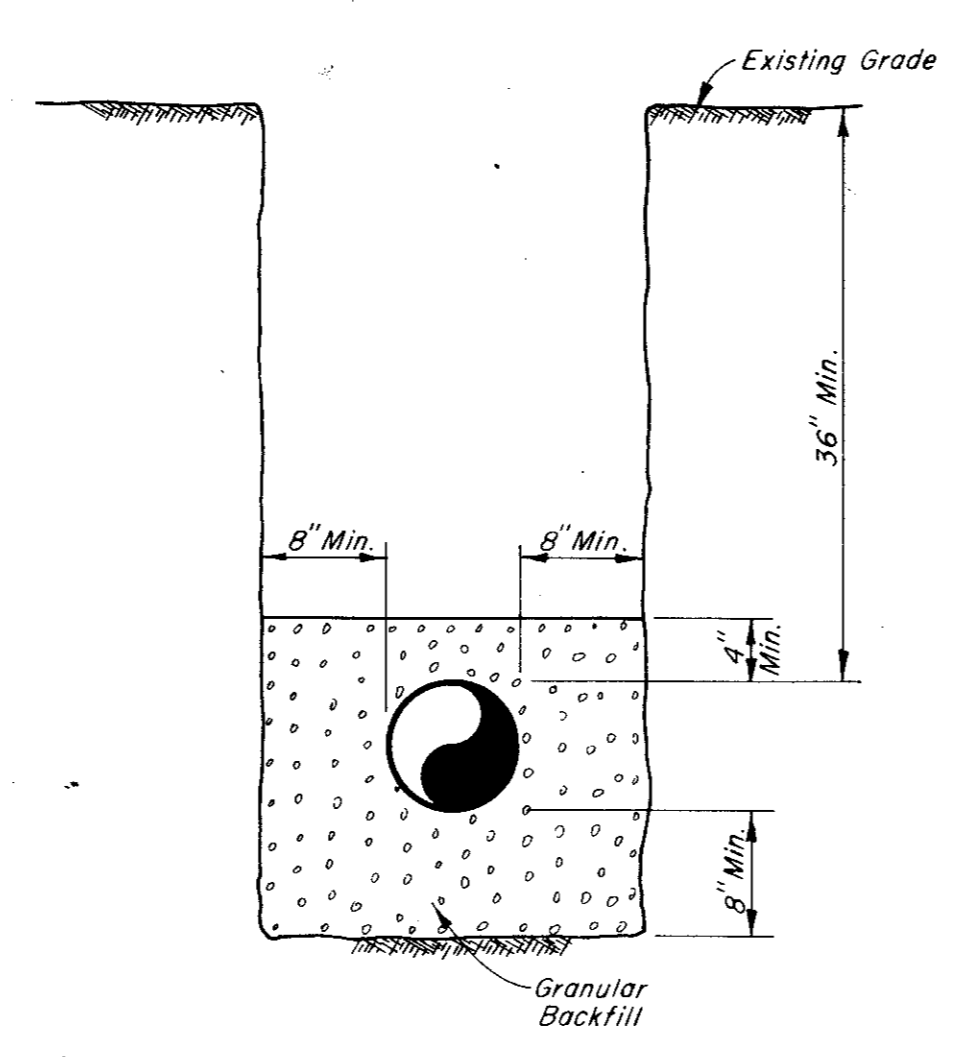


1976
 DOREY & STACY
 ENGINEERS
 36-15

NOTE:
 Station 0+00 Is In The East Edge Of Dooley Road
 Approximately 700' South Of The Aviation Tower
 And 27' West Of The Existing Fire Hydrant



NOTE:
 Depth of fire hydrant lead and
 bury of hydrant shall conform to
 cover of pipe as specified.



S	O	L	S	Z	1/4 Bend		1/8 Bend		1/2 Tee		Plug	
					A	B	A	B	A	B	C	D
6"	16"	10"	9"	10"	6"	8"	10"	12"	10"	21"		
8"	22"	13"	13"	13"	8"	10"	13"	16"	2"	29"		

George O. Stacy

RECORD DRAWINGS

CITY OF ADDISON
 DALLAS COUNTY, TEXAS
 SEWER AND WATER IMPROVEMENTS
 DOOLEY ROAD WATER LINE
 EXTENSION AND DETAILS
 GINN & STACY, INC.
 CONSULTING ENGINEERS DALLAS, TEXAS
 Designed By: Scale: As Shown
 Drawn By: J.D.M. Date: 1976 Sheet 4 of 5