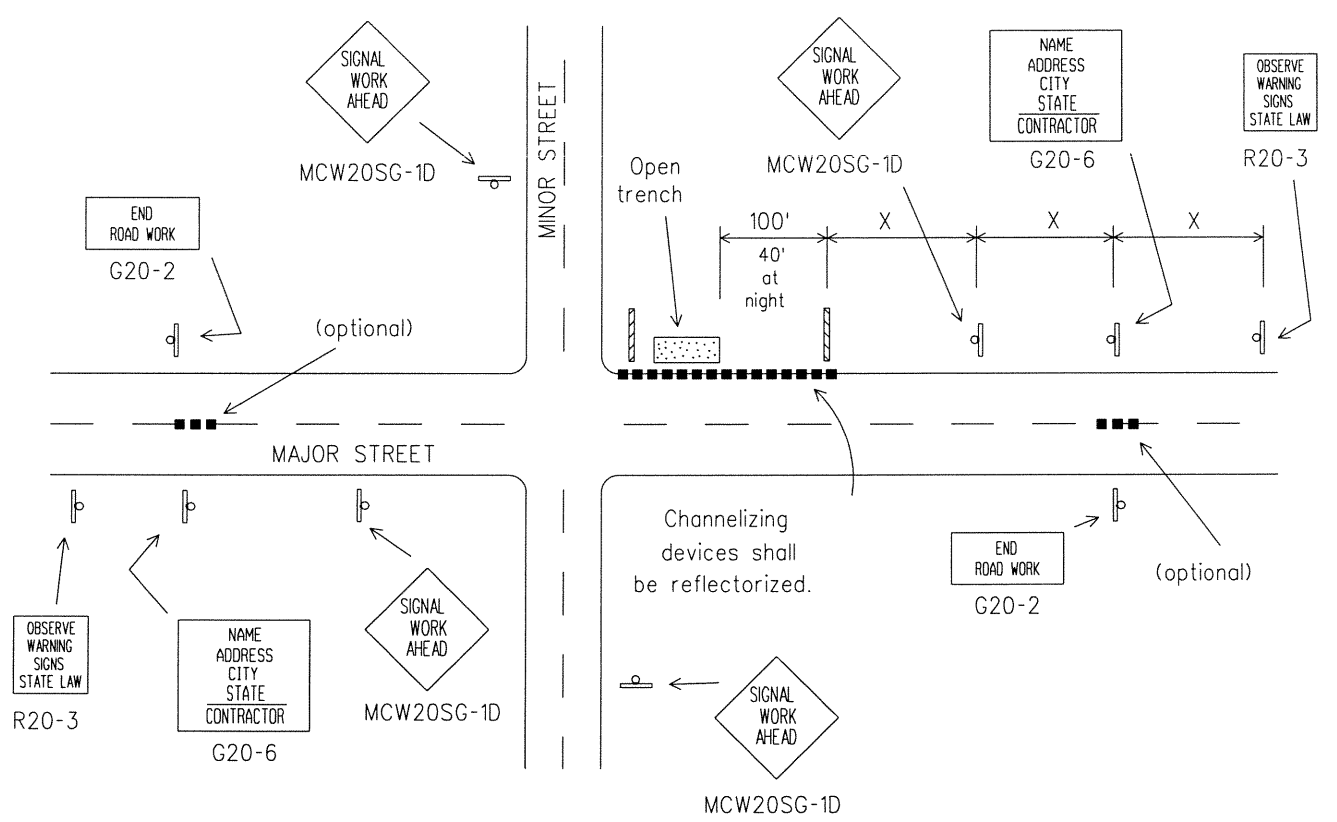
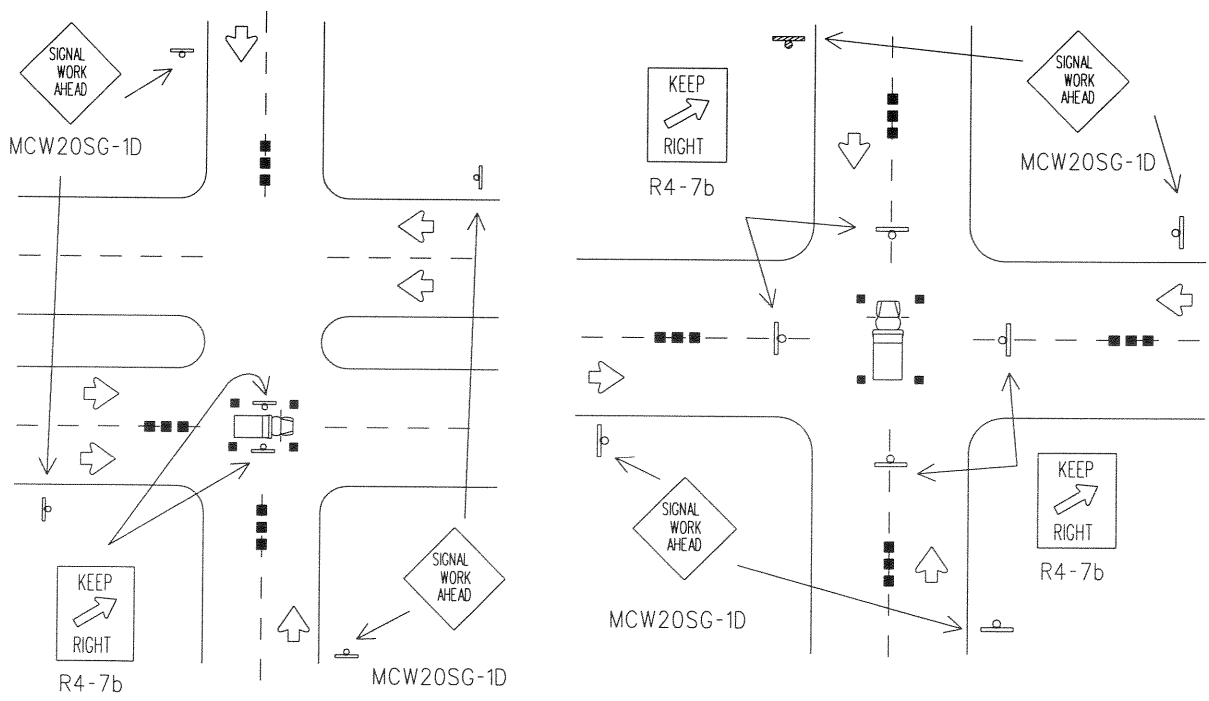


TYPICAL DETECTOR INSTALLATION

Nighttime - 1. Channelizing Devices shall be reflectorized.
2. Barricades shall have Flashing Warning Lights.



TYPICAL ADVANCE SIGNING



TYPICAL HANGING SIGNAL INSTALLATIONS

Advance warning channelizing devices are optional.

Posted Speed	Formula	Minimum Desirable Taper Lengths			Suggested Maximum Spacing of Device		Minimum Sign Spacing X Distance
		10' Offset	11' Offset	12' Offset	On a Taper	On a Tangent	
30	$L = \frac{WS^2}{60}$	150'	165'	180'	30'	60'-75'	120'
35		205'	225'	245'	35'	70'-90'	160'
40		265'	295'	320'	40'	80'-100'	240'
45	$L = WS$	450'	495'	540'	45'	90'-110'	320'

L=Length of Taper (FT.) W=Width of Offset (FT.) S=Posted Speed (MPH)

- Legend**
- Heavy Work Vehicle
 - Type I Barricade
 - Channelizing Devices
 - Flashing Arrow Panel

7/20/01
Alan P. McNeil

▲ The arrow panel may be omitted when stated elsewhere in the plans.

Typical channelizing device is the 28" cone. Plastic drums may be used if approved by the Owner. Metal drums shall NOT be used as a channelizing device or sign support. Advance signs and barricades shall be in place when signal construction operations are in progress and shall be provided with extra weights for wind resistance. The contractor may remove advance signs and barricades when no construction operations are underway if permitted elsewhere in the plans. Obstructions or hazards at the work area shall be clearly marked and delineated at all times.

All holes, trenches or other hazardous areas shall be adequately protected by barricades, lights or other protective devices. Trenches shall be covered or surrounded with orange plastic construction fence as directed by the Engineer.

Flagger and MCW20-7a sign may be required according to field conditions. Vehicles parked in roadway shall be equipped with two strobes. High level flags at corners of vehicle may also be used. Work operations that require work vehicle in traveled way 20 minutes or less may use cones, high level flags and strobes as advance warning devices. Cones should only be placed around vehicle. Flaggers may be used on high speed rural intersections.

TRAFFIC CONTROL PLAN DETAILS						
QUORUM - INWOOD CONNECTOR						
SHEET 1 OF 2						
DEPARTMENT OF PUBLIC WORKS						
TOWN OF ADDISON, TEXAS						
DESIGN	DRAWN	DATE	SCALE	NOTES	FILE	NUMBER
P.G.W.	C.W.W.	2/00		AS BUILT		46