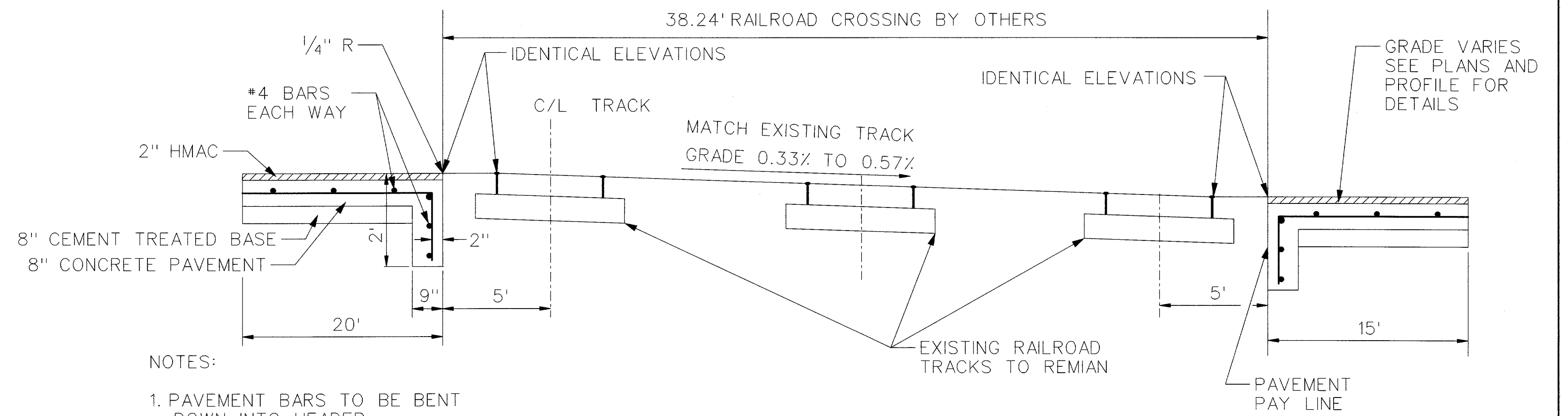
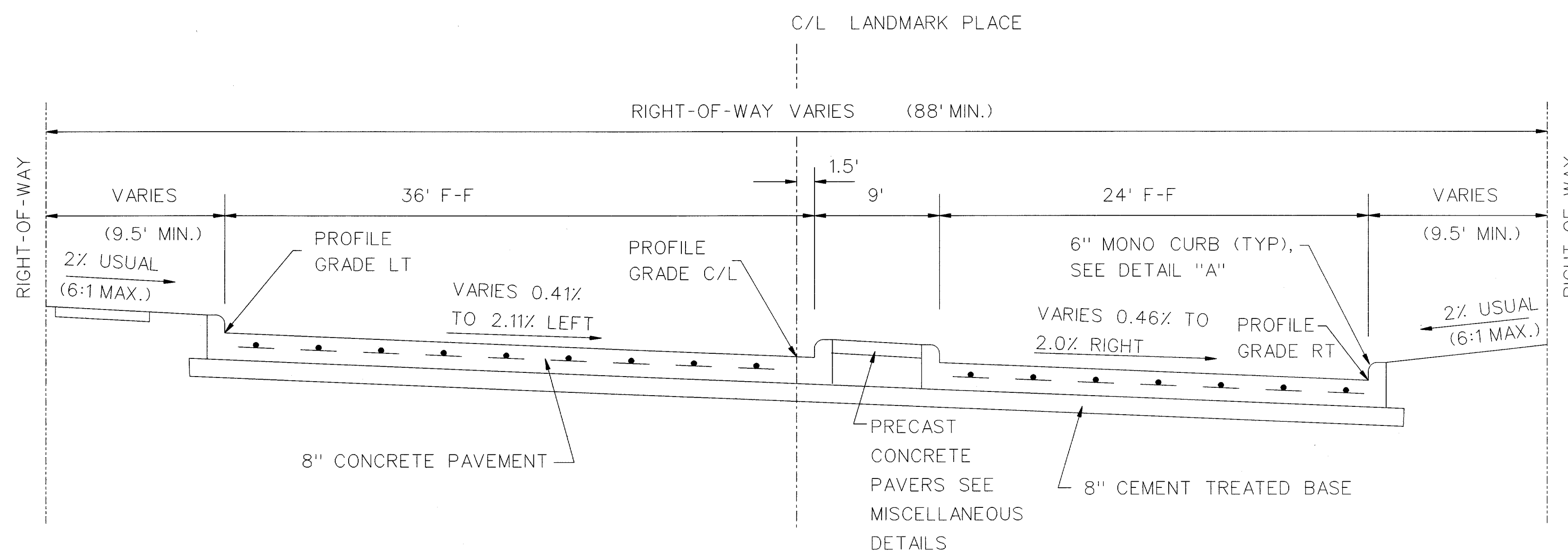


**INWOOD ROAD - STA. 55+52.00 TO STA. 56+52.00**  
NOT TO SCALE

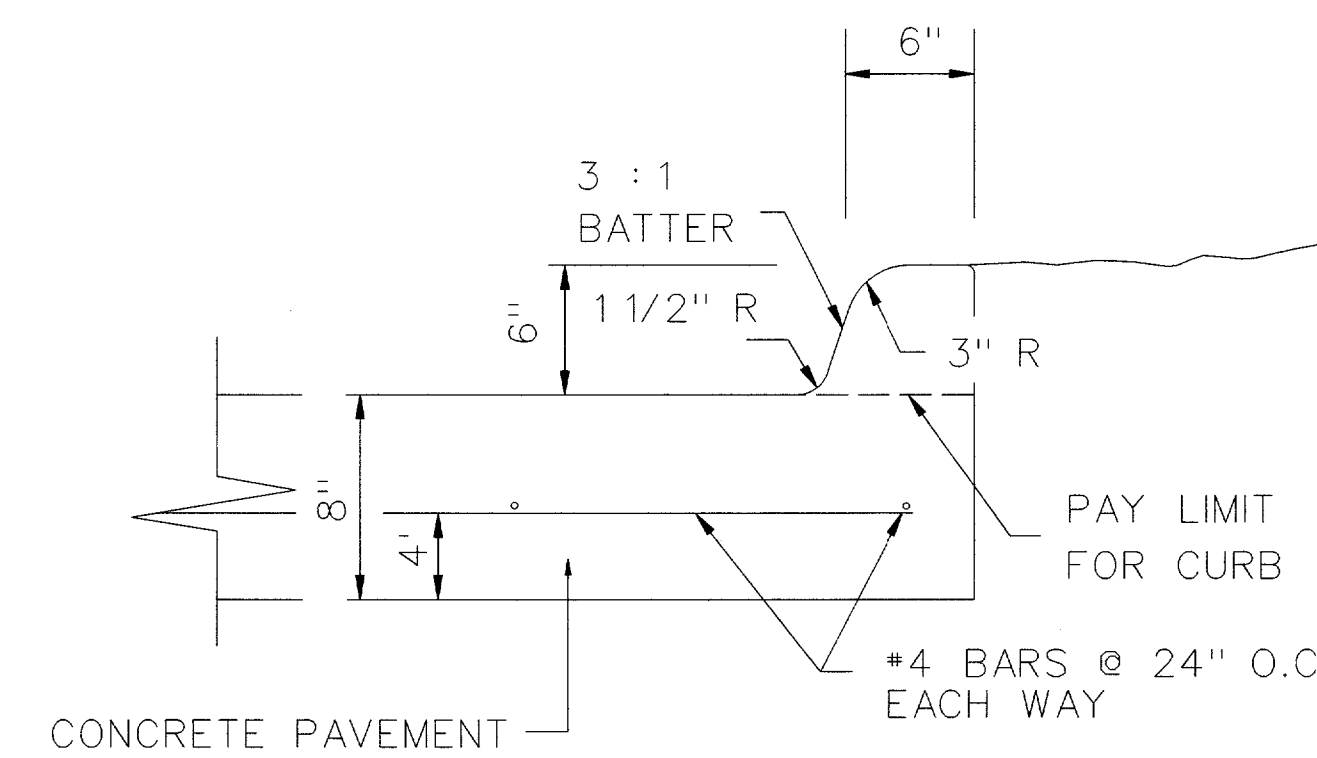


- NOTES:
1. PAVEMENT BARS TO BE BENT DOWN INTO HEADER.
  2. HEADER AND PAVEMENT TO BE MONOLITHIC.

**TYPICAL SECTION AT RAILROAD CROSSING**  
NOT TO SCALE



**LANDMARK PLACE - STA. 48+19.15 TO STA. 48+68.65**  
**STA. 49+05.83 TO STA. 49+22.70**  
NOT TO SCALE



**DETAIL "A"**  
NOT TO SCALE

NOTE:  
CEMENT TREATED BASE SHALL BE STRENGTH 0, USING EXISTING MATERIAL, 6% OF CEMENT AND ORDINARY COMPACTION.



<b>PARSONS</b> 15770 N. DALLAS PARKWAY, SUITE 500, DALLAS, TEXAS 75248 (972)991-1900						
<b>TYPICAL SECTIONS</b>						
<b>SHEET 1 OF 2</b>						
<b>INWOOD CONNECTION</b>						
<b>DEPARTMENT OF PUBLIC WORKS</b>						
<b>TOWN OF ADDISON, TEXAS</b>						
DESIGN	DRAWN	DATE	SCALE	NOTES	FILE	NUMBER
P.G.W.	C.W.W.	05/12/03				2