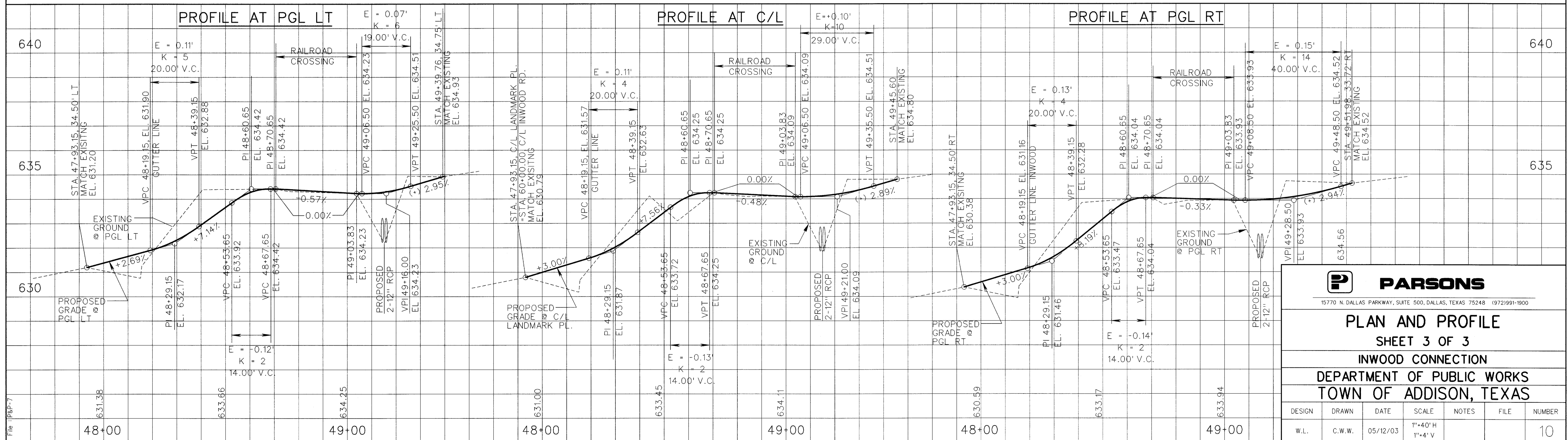


NOTES:

1. ALL DIMENSIONS ARE FACE TO FACE OF CURB, UNLESS OTHERWISE NOTED.
2. SEE PLAN AND PROFILE SHEETS 1 & 2 FOR PAVING DETAILS ON INWOOD ROAD.
3. SEE TYPICAL SECTIONS FOR CONSTRUCTION JOINT DETAIL ON LANDMARK PLACE
4. INSTALL LANDSCAPE PAVERS IN MEDIAN ON LANDMARK PLACE FROM STA. 48+31.63 TO STA. 48+64.29 AND STA. 49+09.42 TO STA. 49+31.11. SEE MISCELLANEOUS DETAILS.
5. REMOVE EXISTING CONCRETE PAVEMENT WITHIN LIMITS OF NEW CONSTRUCTION.
6. THE INFORMATION REGARDING THE SIZE AND LOCATION OF THE EXISTING UNDERGROUND UTILITIES IS APPROXIMATE. CONTRACTOR SHALL VERIFY THE LOCATE OF THE EXISTING UNDERGROUND UTILITIES IN THE FIELD. CONTRACT IS RESPONSIBLE FOR ANY DAMAGE OCCURED TO EXISTING UTILITIES AND FACILITIES THROUGHOUT THE DURATION OF THIS PROJECT.



15770 N. DALLAS PARKWAY, SUITE 500, DALLAS, TEXAS 75248 (972)991-1900

PLAN AND PROFILE
 SHEET 3 OF 3

INWOOD CONNECTION
 DEPARTMENT OF PUBLIC WORKS
 TOWN OF ADDISON, TEXAS

DESIGN	DRAWN	DATE	SCALE	NOTES	FILE	NUMBER
W.L.	C.W.W.	05/12/03	1"=40'H 1"=4'V			10

File: P&P-7

...\\add\inwood_ssa\p&e-7.dwg 05/12/03 03:44:25 PM