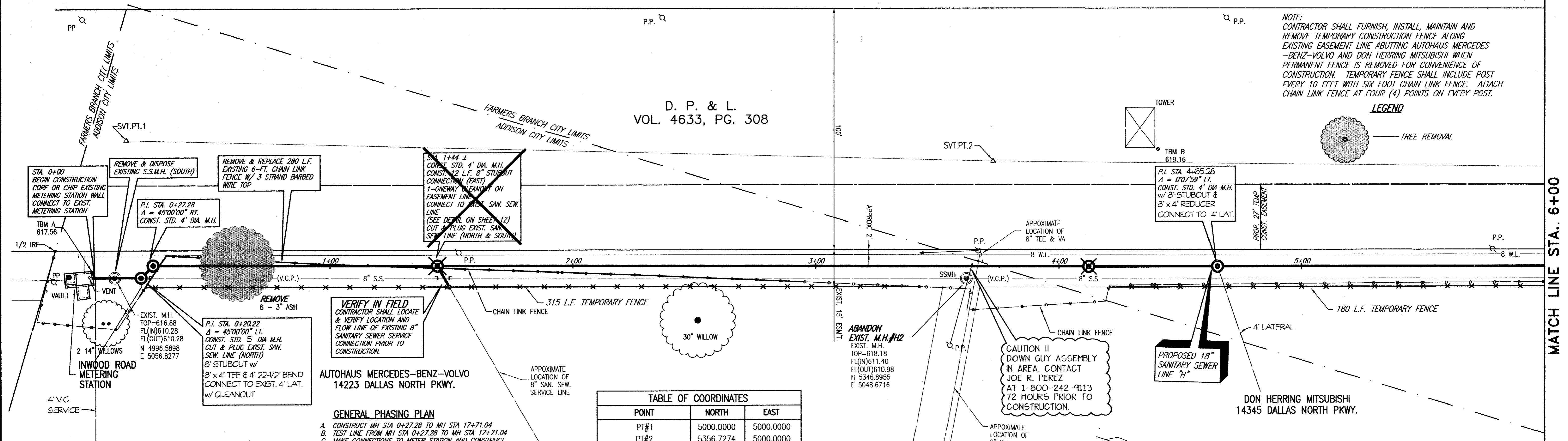


D. P. & L.
VOL. 4633, PG. 308

NOTE:
CONTRACTOR SHALL FURNISH, INSTALL, MAINTAIN AND REMOVE TEMPORARY CONSTRUCTION FENCE ALONG EXISTING EASEMENT LINE ABUTTING AUTOHAUS MERCEDES-BENZ-VOLVO AND DON HERRING MITSUBISHI WHEN PERMANENT FENCE IS REMOVED FOR CONVENIENCE OF CONSTRUCTION. TEMPORARY FENCE SHALL INCLUDE POST EVERY 10 FEET WITH SIX FOOT CHAIN LINK FENCE. ATTACH CHAIN LINK FENCE AT FOUR (4) POINTS ON EVERY POST.

LEGEND

TREE REMOVAL



AUTOHAUS MERCEDES-BENZ-VOLVO
14223 DALLAS NORTH PKWY.

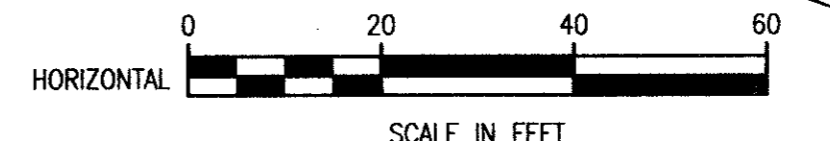
GENERAL PHASING PLAN

- CONSTRUCT MH STA 0+27.28 TO MH STA 17+71.04
- TEST LINE FROM MH STA 0+27.28 TO MH STA 17+71.04
- MAKE CONNECTIONS TO METER STATION AND CONSTRUCT FROM STA 0+00 TO 0+27.28 AND CONNECTION BETWEEN MH STA 17+71.04 TO MH #110 (LATERAL H-2).
- CONSTRUCT MH STA 17+71.04 TO MH STA 18+31.64 AND MAKE CONNECTION BETWEEN MH STA 17+88.96 AND MH #110 (LATERAL H-1)
- PROVIDE ADDISON WITH COLOR TV INSPECTION OF COMPLETED LINES IN "C" & "D" ABOVE.

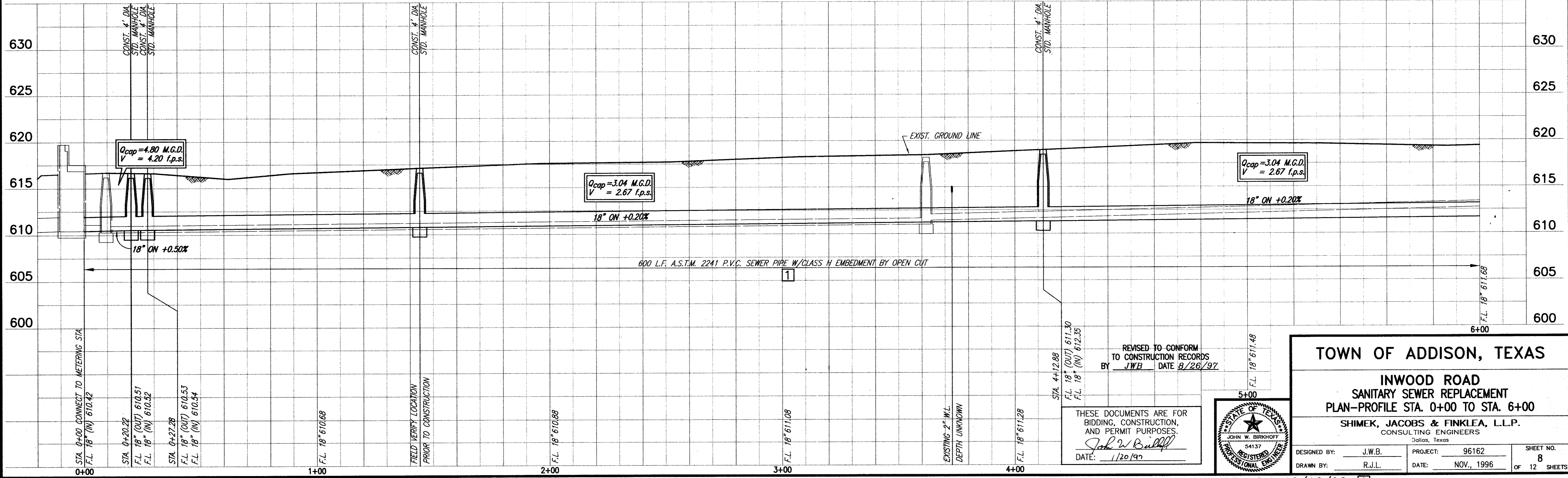
TABLE OF COORDINATES

POINT	NORTH	EAST
PT#1	5000.0000	5000.0000
PT#2	5356.7274	5000.0000
1/2 IRF STA. -(0+12.9)	4971.9344	5046.3840
P.I. STA. 0+20.22	5007.3788	5056.5765
P.I. STA. 0+27.28	5012.2511	5051.4719
P.I. STA. 4+12.28	5397.1468	5042.5105

T.B.M. RS "D" CUT IN DRIVEWAY AT BANK PARKING LOT STA. 18+28, 32' LT. ELEV.=632.70 N 6798.4563 E 5059.2585
T.B.M. B "D" CUT IN NORTHEAST CORNER OF TOWER STA. 4+40 ELEV.=619.16 N 5424.4635 E 4993.3687

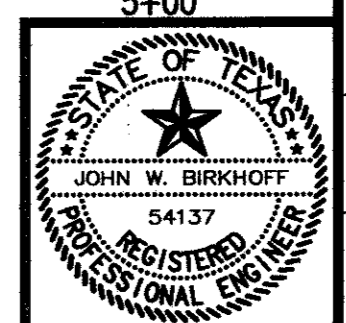


These plans and related specifications were prepared for construction of this specific project only. Reuse of these documents is not permitted without written authorization of Shimek, Jacobs & Finklea.



REVISED TO CONFORM TO CONSTRUCTION RECORDS BY JWB DATE 8/26/97

THESE DOCUMENTS ARE FOR BIDDING, CONSTRUCTION, AND PERMIT PURPOSES.
DATE: 1/20/97



TOWN OF ADDISON, TEXAS

**INWOOD ROAD
SANITARY SEWER REPLACEMENT
PLAN-PROFILE STA. 0+00 TO STA. 6+00**

SHIMEK, JACOBS & FINKLEA, L.L.P.
CONSULTING ENGINEERS
Dallas, Texas

DESIGNED BY: J.W.B. PROJECT: 96162 SHEET NO. 8
DRAWN BY: R.J.L. DATE: NOV., 1996 OF 12 SHEETS

MATCH LINE STA. 6+00

MATCH LINE STA. 12+00

D. P. & L.
VOL. 4633, PG. 308

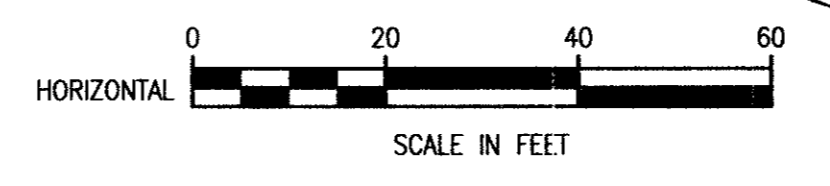
NOTE:
CONTRACTOR SHALL FURNISH, INSTALL, MAINTAIN AND REMOVE TEMPORARY CONSTRUCTION FENCE ALONG EXISTING EASEMENT LINE ABUTTING DON HERRING MITSUBISHI AND THE PRINCETON WHEN PERMANENT FENCE IS REMOVED FOR CONVENIENCE OF CONSTRUCTION. TEMPORARY FENCE SHALL INCLUDE POST EVERY 10 FEET WITH SIX FOOT CHAIN LINK FENCE. ATTACH CHAIN LINK FENCE AT FOUR (4) POINTS ON EVERY POST.

TABLE OF COORDINATES

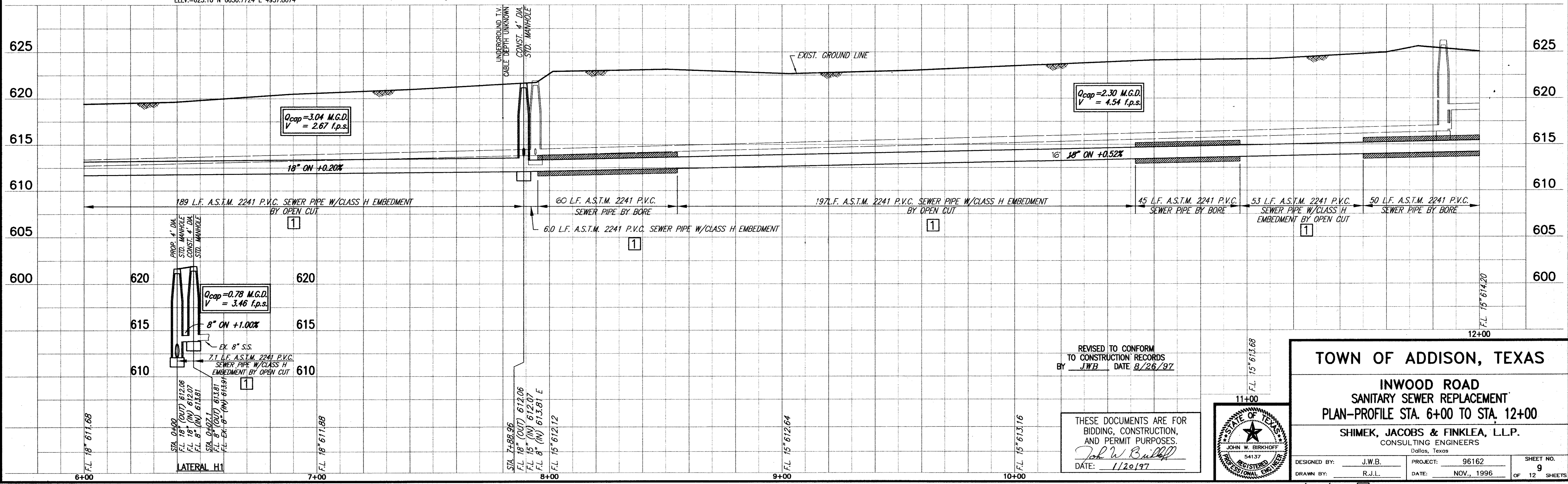
POINT	NORTH	EAST
PT#2	5356.7274	5000.0000
PT#67	5784.6567	4993.6116
1/2" I.P.F. STA 7+80	5764.4900	5026.3648
STA. 7+88.96	5773.7025	5032.8689

T.B.M. RS "□" CUT IN DRIVEWAY AT BANK PARKING LOT STA. 18+28, 32' LT. ELEV.=632.70 N 6798.4563 E 5059.2585

T.B.M. C "□" CUT IN SOUTHWEST CORNER OF TOWER STA. 10+68 ELEV.=625.10 N 6050.7724 E 4957.8074

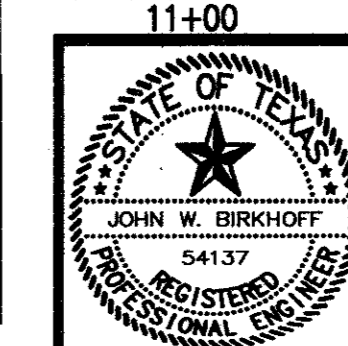


NOTE:
CONTRACTOR SHALL ABANDON MH #H9. ABANDON SHALL INCLUDE PLACING 2000 PSI(N.C.T.C.O.G. 7.4.5 CLASS B) CONCRETE 12 INCHES ABOVE SPRING LINE OF PIPES, BACKFILLING IN 8 INCH LIFTS WITH EXCAVATED OR IMPORTED MATERIAL TO THE COVER. REPLACE COVER, WELD TO RING.



REVISED TO CONFORM TO CONSTRUCTION RECORDS BY JWB DATE 8/26/97

THESE DOCUMENTS ARE FOR BIDDING, CONSTRUCTION, AND PERMIT PURPOSES.
John W. Bullard
DATE: 1/20/97



TOWN OF ADDISON, TEXAS

INWOOD ROAD
SANITARY SEWER REPLACEMENT
PLAN-PROFILE STA. 6+00 TO STA. 12+00

SHIMEK, JACOBS & FINKLEA, L.L.P.
CONSULTING ENGINEERS
Dallas, Texas

DESIGNED BY: J.W.B. PROJECT: 96162 SHEET NO. 9
DRAWN BY: R.J.L. DATE: NOV., 1996 OF 12 SHEETS

D. P. & L.
VOL. 4633, PG. 308

NOTE: CONTRACTOR SHALL HAVE TO ELECTRIC FIELD LOCATE LOCATION OF UNDERGROUND CONDUIT IN THE VICINITY OF P.I. STA. 17+76.04. CONTRACTOR SHALL SHIFT PROPOSED MANHOLE LOCATION ALONG N-S LINE AND ADJUST HORIZONTAL ALIGNMENT OF E-W LINE AND NORTHEAST LINE TO AVOID ANY CONDUIT FOUND.

MATCH LINE STA. 12+00

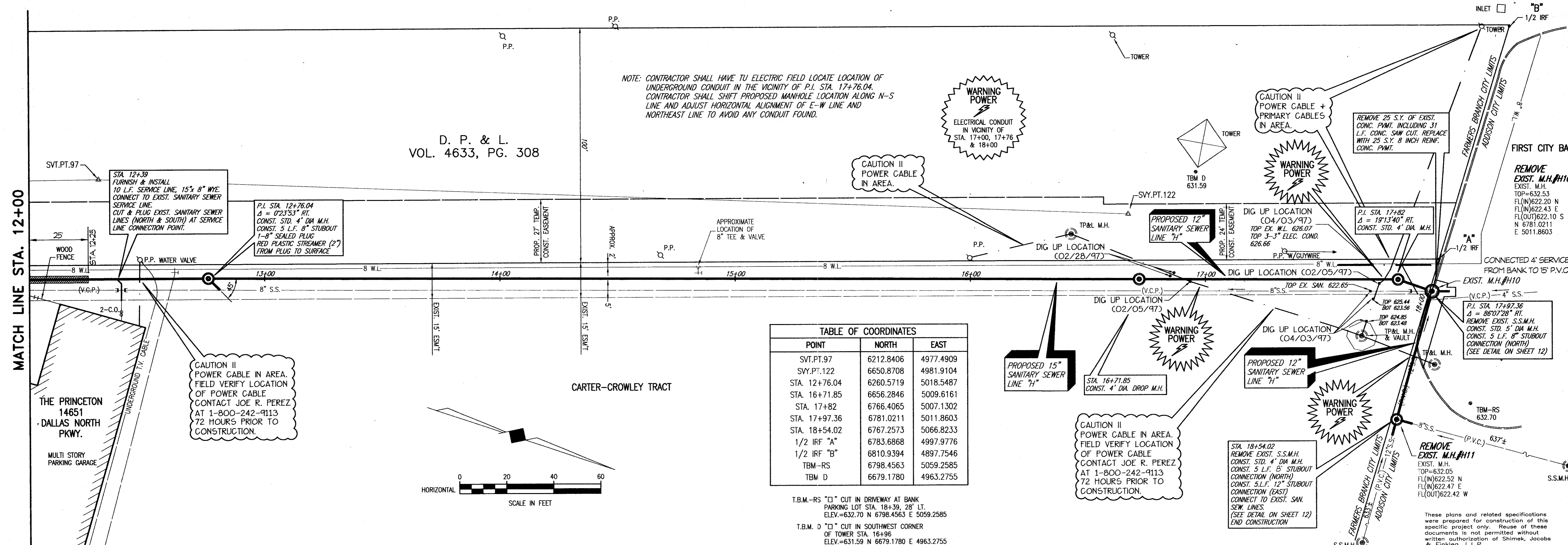
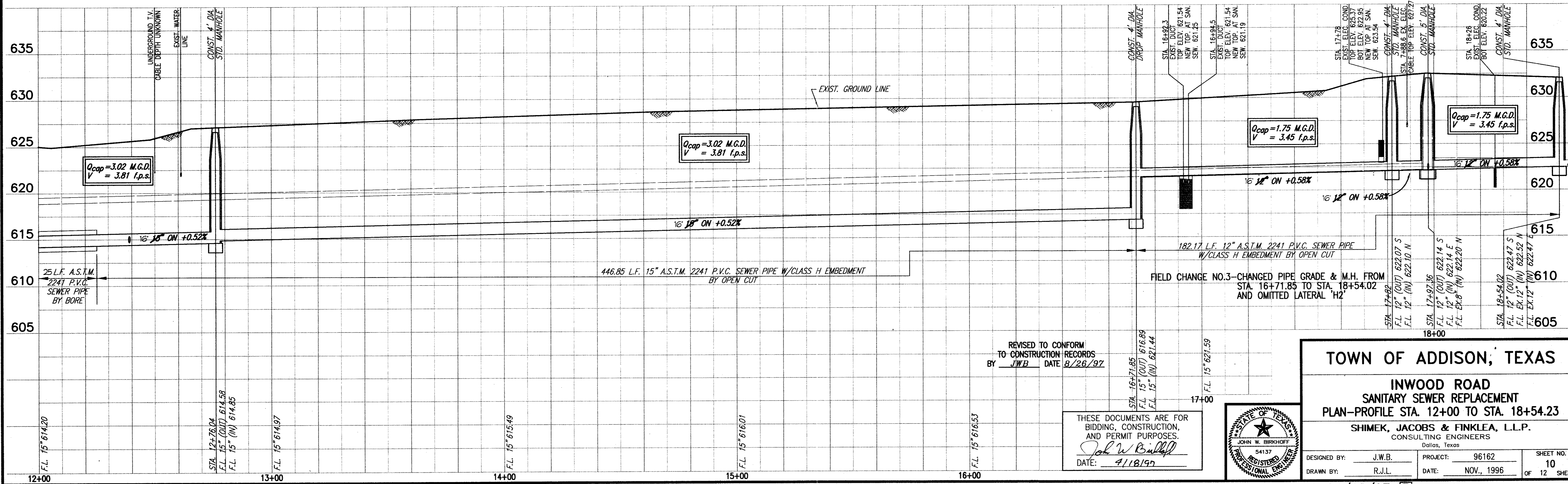
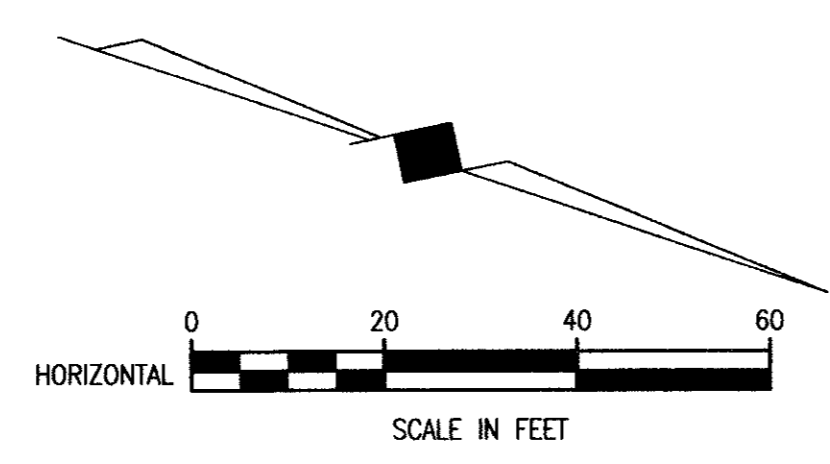


TABLE OF COORDINATES

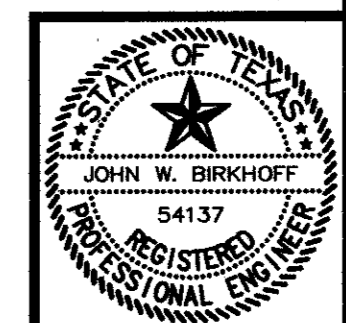
POINT	NORTH	EAST
SVT.PT.97	6212.8406	4977.4909
SVY.PT.122	6650.8708	4981.9104
STA. 12+76.04	6260.5719	5018.5487
STA. 16+71.85	6656.2846	5009.6161
STA. 17+82	6766.4065	5007.1302
STA. 17+97.36	6781.0211	5011.8603
STA. 18+54.02	6767.2573	5066.8233
1/2 IRF "A"	6783.6868	4997.9776
1/2 IRF "B"	6810.9394	4897.7546
TBM-RS	6798.4563	5059.2585
TBM D	6679.1780	4963.2755

T.B.M.-RS "□" CUT IN DRIVEWAY AT BANK PARKING LOT STA. 18+39.28' LT. ELEV.=632.70 N 6798.4563 E 5059.2585
 T.B.M. D "□" CUT IN SOUTHWEST CORNER OF TOWER STA. 16+96 ELEV.=631.59 N 6679.1780 E 4963.2755



REVISED TO CONFORM TO CONSTRUCTION RECORDS BY JWB DATE 8/28/97

THESE DOCUMENTS ARE FOR BIDDING, CONSTRUCTION, AND PERMIT PURPOSES.
 John W. Birkhoff
 DATE: 9/18/97



TOWN OF ADDISON, TEXAS

**INWOOD ROAD
SANITARY SEWER REPLACEMENT
PLAN—PROFILE STA. 12+00 TO STA. 18+54.23**

SHIMEK, JACOBS & FINKLEA, L.L.P.
CONSULTING ENGINEERS
Dallas, Texas

DESIGNED BY: J.W.B. PROJECT: 96162 SHEET NO. 10
 DRAWN BY: R.J.L. DATE: NOV., 1996 OF 12 SHEETS