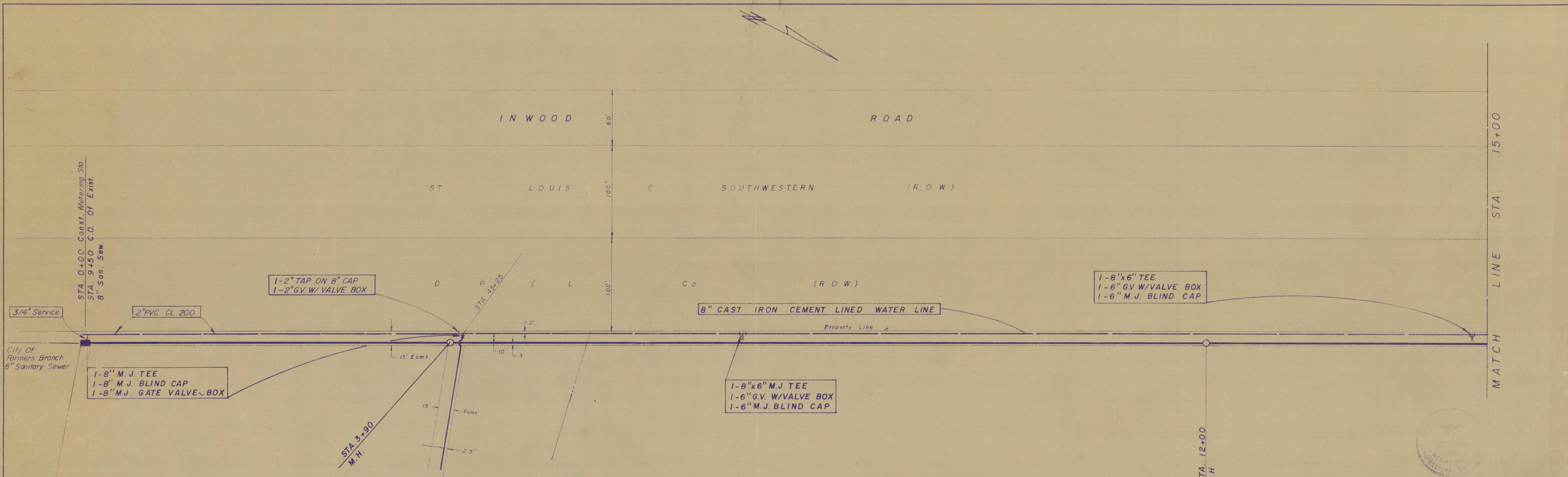


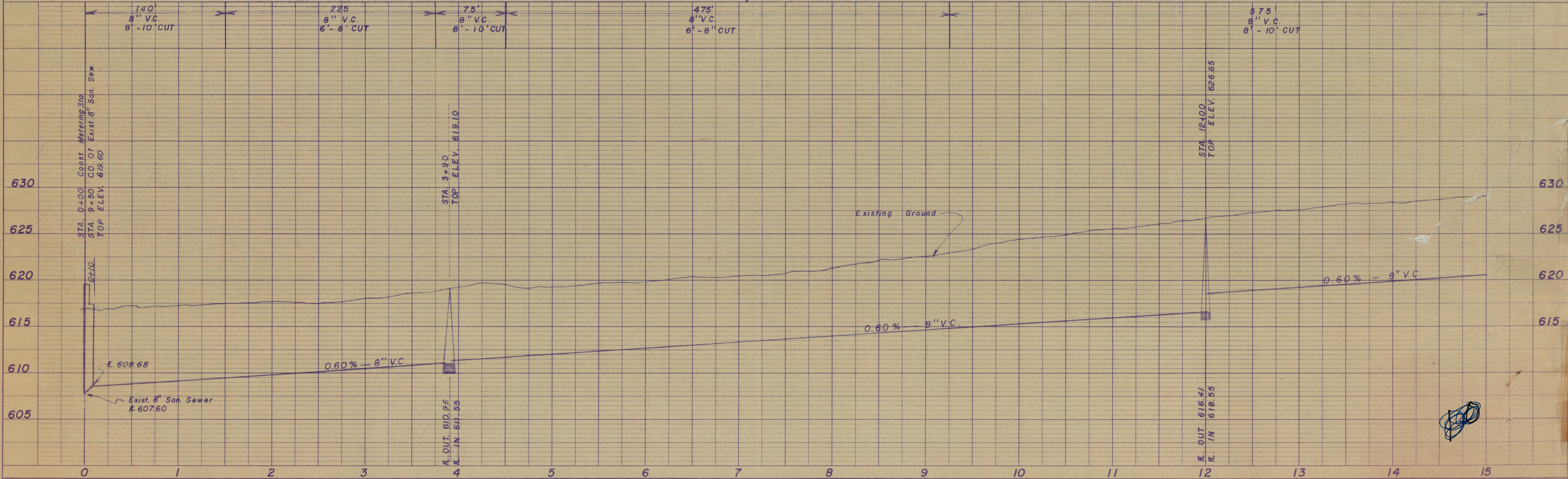
DATE: _____ BY: _____
 PLAN
 NOTE BOOK GRADE CHECKED: _____
 ALIGNMENT CHECKED: _____
 # OF WAYS CHECKED: _____
 No. _____

DATE: _____ BY: _____
 PROFILE
 NOTE BOOK GRADE CHECKED: _____
 ELEVATION INSTALLED CHECKED: _____
 No. _____



CITY OF ADDISON, TEXAS - SANITARY SEWER IMPROVEMENTS

CHANGE ORDER #1

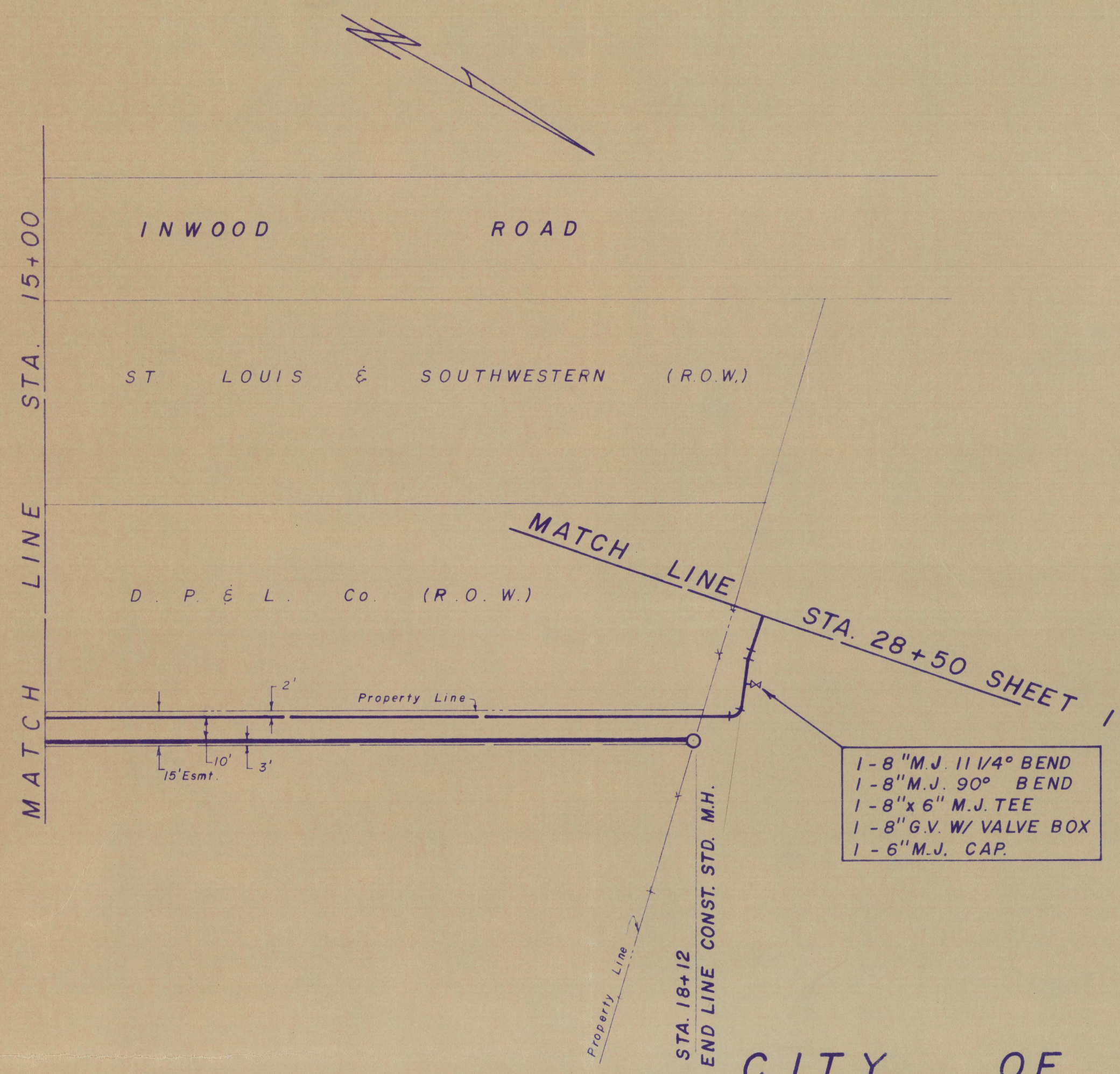


Drawer 7
 #2

Drawer 7
 #2

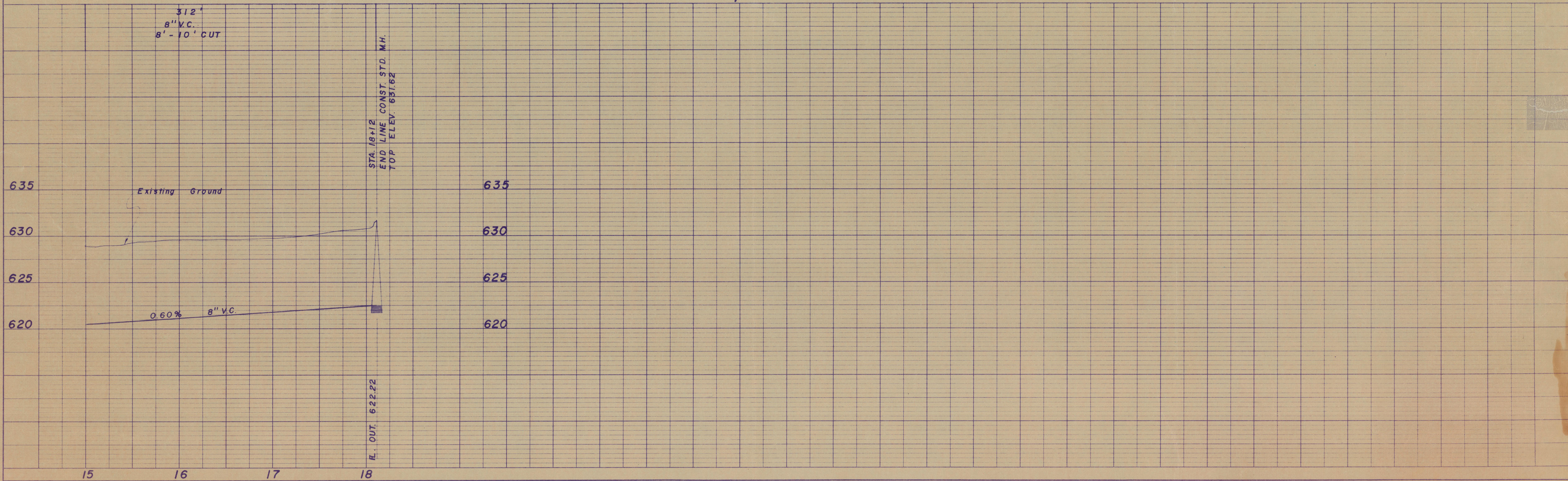
PLAN
 SURVEYED BY
 DATE
 NOTE BOOK No.
 ALUMINUM CHECKED BY
 REVISIONS CHECKED BY

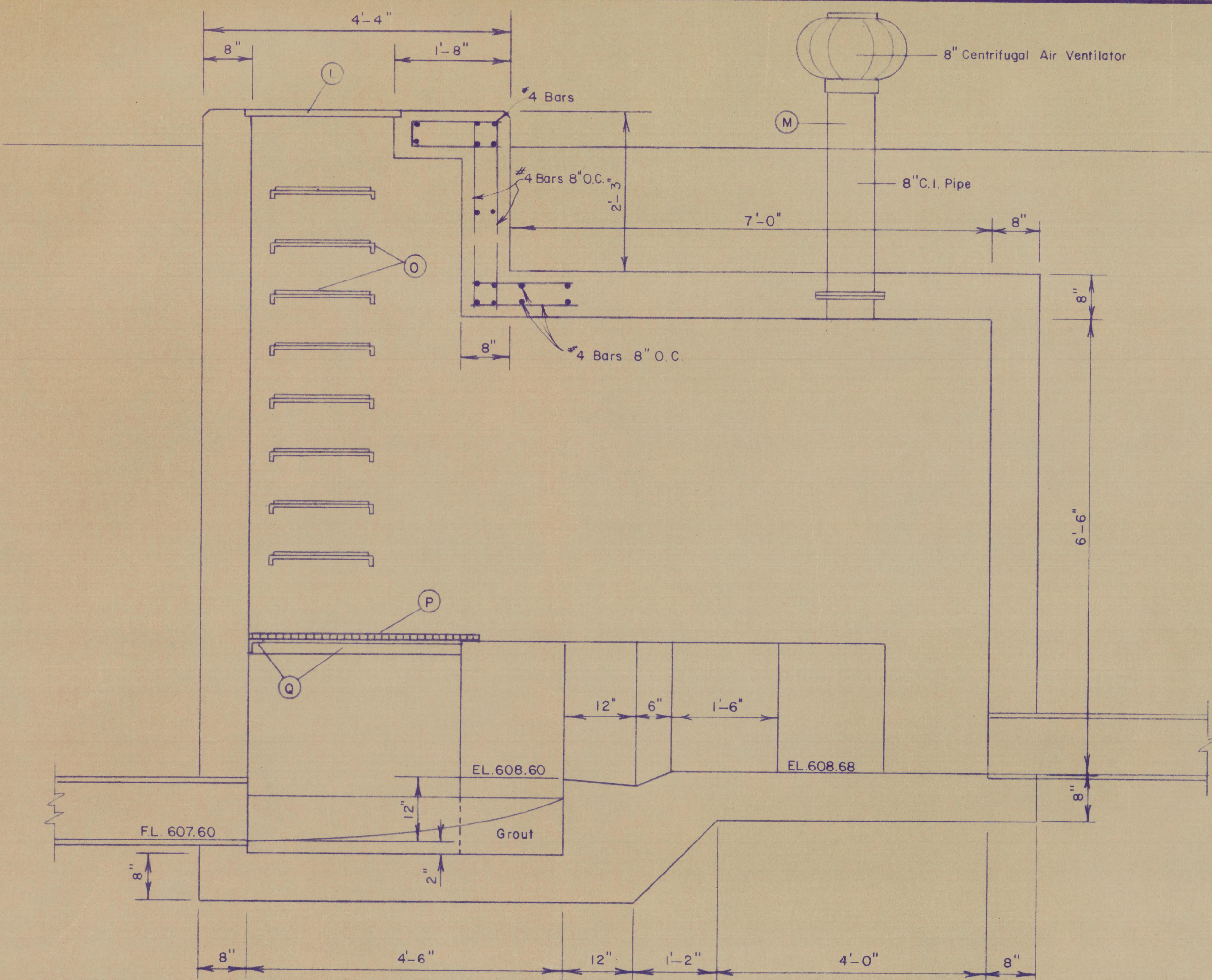
PROFILE
 SURVEYED BY
 DATE
 NOTE BOOK No.
 ALUMINUM CHECKED BY
 REVISIONS CHECKED BY



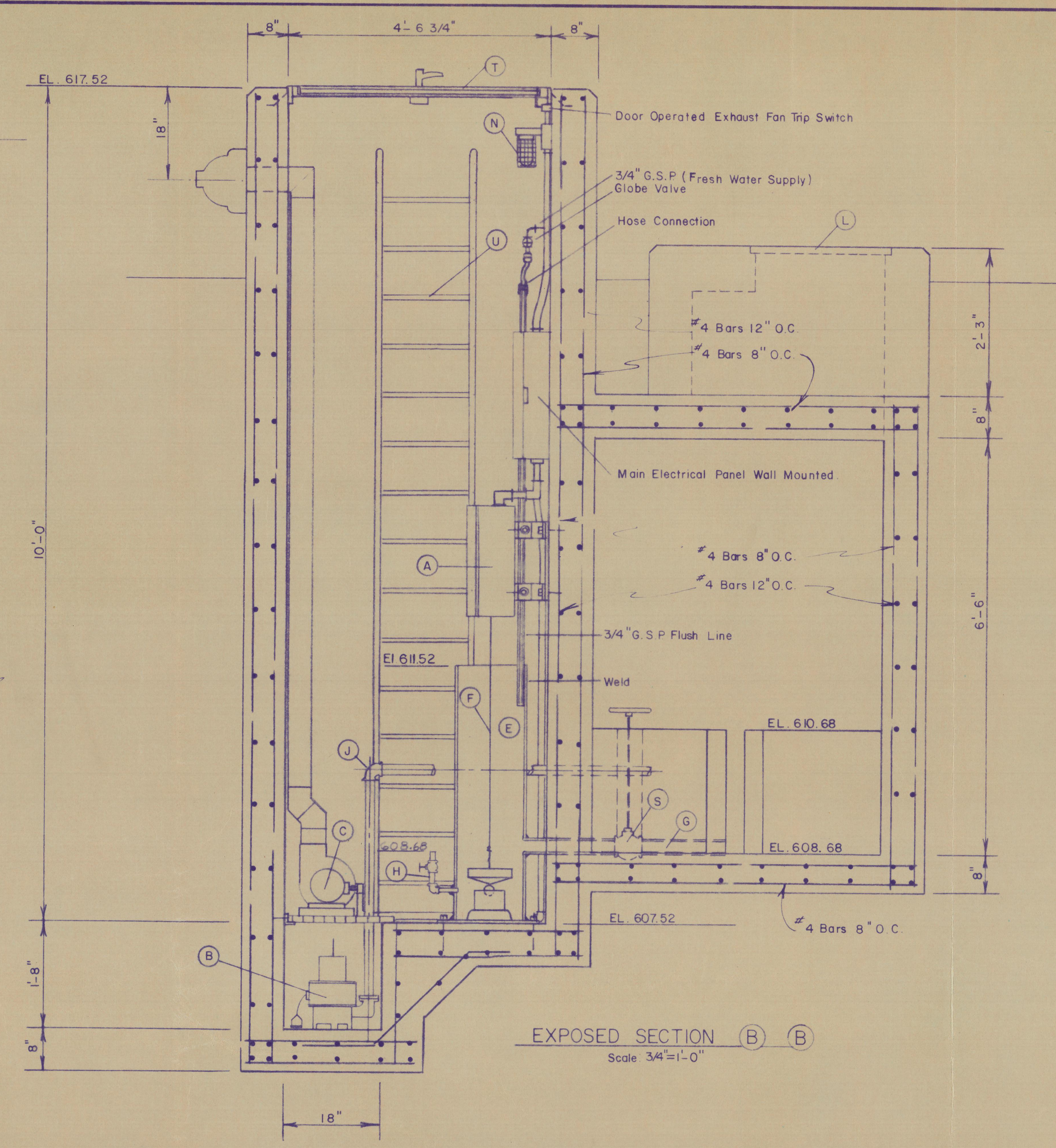
CITY OF ADDISON, TEXAS — SANITARY SEWER IMPROVEMENTS

CHANGE ORDER # 1

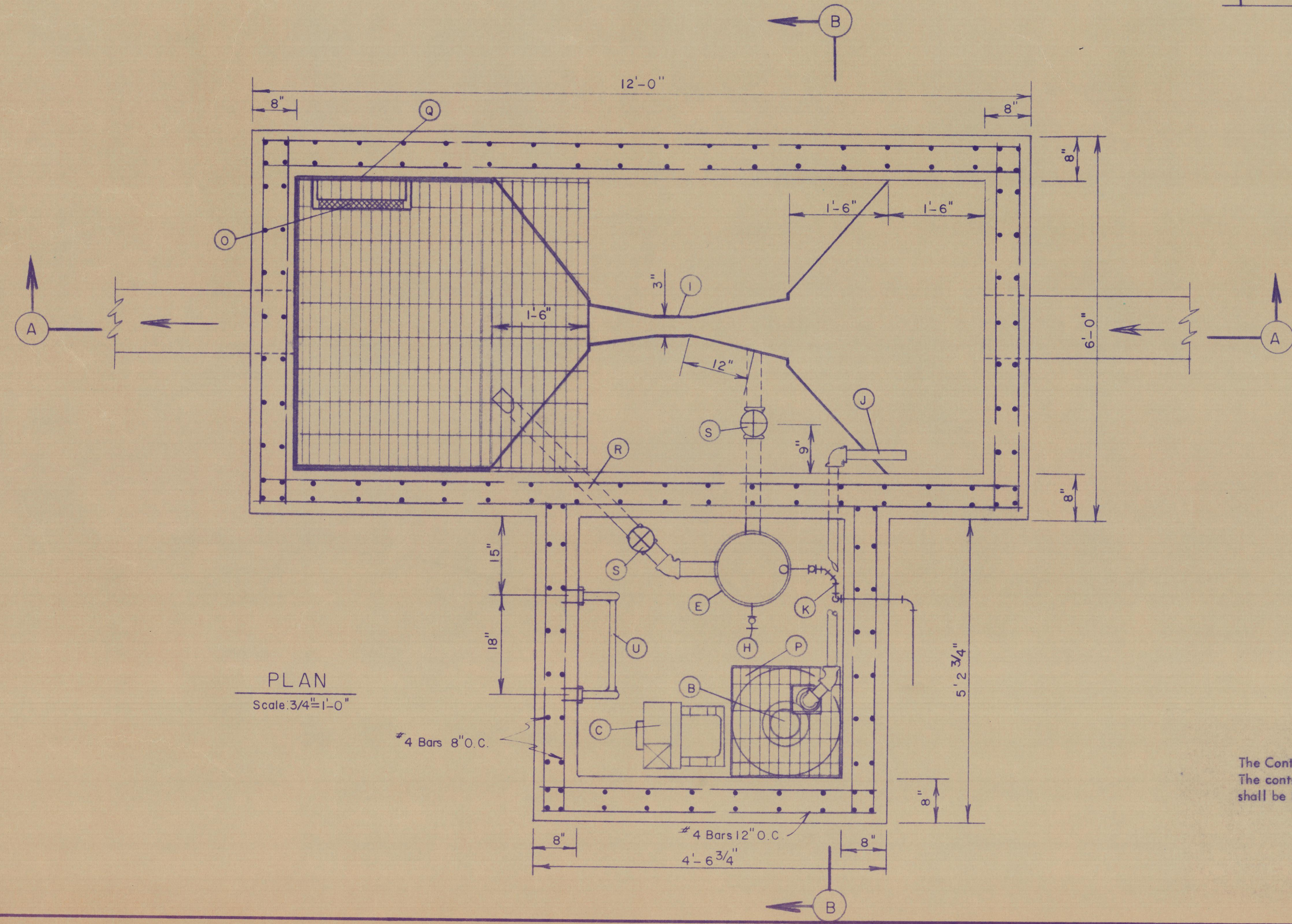




SECTION A-A
Scale 3/4"=1'-0"



EXPOSED SECTION B-B
Scale 3/4"=1'-0"



PLAN
Scale 3/4"=1'-0"

GENERAL NOTES

1. All concrete shall have an allowable compressive strength of 3,000 p.s.i.
2. Concrete above ground shall have a hand rubbed finish.
3. All steel plate and pipe shall be primed with an epoxy primer and finished with a epoxy enamel paint.
4. All bolts, nuts and washers shall be galvanized.
5. All electrical conduit shall be water tight, p.v.c. coated steel.
6. All locks shall be keyed alike.

EQUIPMENT SCHEDULE

- A. Bif Totalizer-Indicator-Recorder, Model 302 with 12" circular chart recorder, electrically driven.
- B. Hydr-O-Matic Sump Pump, 1/3 HP., 115 v., 1 1/2" discharge complete with pressure switch control.
- C. Peerless Model S, 7 3/4" wheel centrifugal radial blade blower with steel discharge duct and iron exhaust cover. Blower shall operate automatically with trip switch mounted on hatch cover.
- D. Float 12" Dia.
- E. 14" Flanged steel pipe well.
- F. Float cable by BIF.
- G. 2" Flanged steel Pipe
- H. 3/4" G.S.P. level adjustment piping and valves.
- I. 3" Throat plastic parshall flume liner, by BIF.
- J. 1 1/2" G.S.P. sump discharge line.
- K. Fresh water supply line, copper, tapped on 8" CI line.
- L. Standard C.I. Manhole Frame And Cover.
- M. 8" Pipe vent
- N. 150 wt. light with water tight fixture and wire guard, to operate automatically with hatch cover.
- O. PVC coated C.I. access steps. (Full length type)
- P. Aluminum lay-in grating, Borden Products or equal.
- Q. 2" x 2" x 1/4" angle for grating support, secured with 1/2" galvanized bolts on 12" centers.
- R. 2" Flanged steel pipe drain line.
- S. 2" Flanged iron body gate valve with handwheel and extended stem.
- T. 4' x 4' Bilco Type KD2 Hatch cover.
- U. Tubular aluminum access ladder mounted with galvanized bolts.

ELECTRICAL NOTES

The Contractor shall run direct burial cable from the power source to the master control cabinet. The control cabinet shall be a Nema water tight enclosure. Within the control cabinet, there shall be located the following controls:

1. Main disconnect switch.
2. 110 V. circuit for exhaust fan.
3. 110 V. circuit for lights
4. 110 V. circuit for auxiliary receptacle.
5. 110 V. circuit for chart recorder.

CHANGE ORDER NO. 2

CITY OF ADDISON
WATER & SEWER IMPROVEMENTS
METERING STATION

DESIGNED BY B.C.L.	DATE SEPT 13, 1973	SHEET NUMBER 3
DRAWN BY B.C.L.	PROJECT NO.	OF 3
CHECKED BY R.C.K.		SHEETS 3

ROBERT C. KYLE & ASSOCIATES, INC.
CONSULTING ENGINEERS
DALLAS, TEXAS