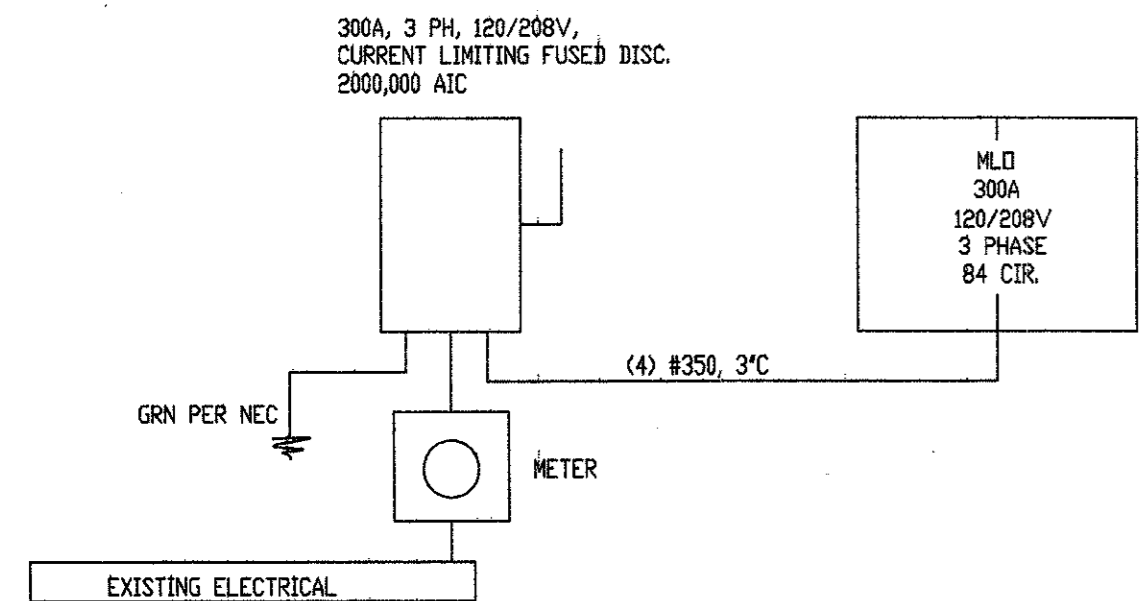


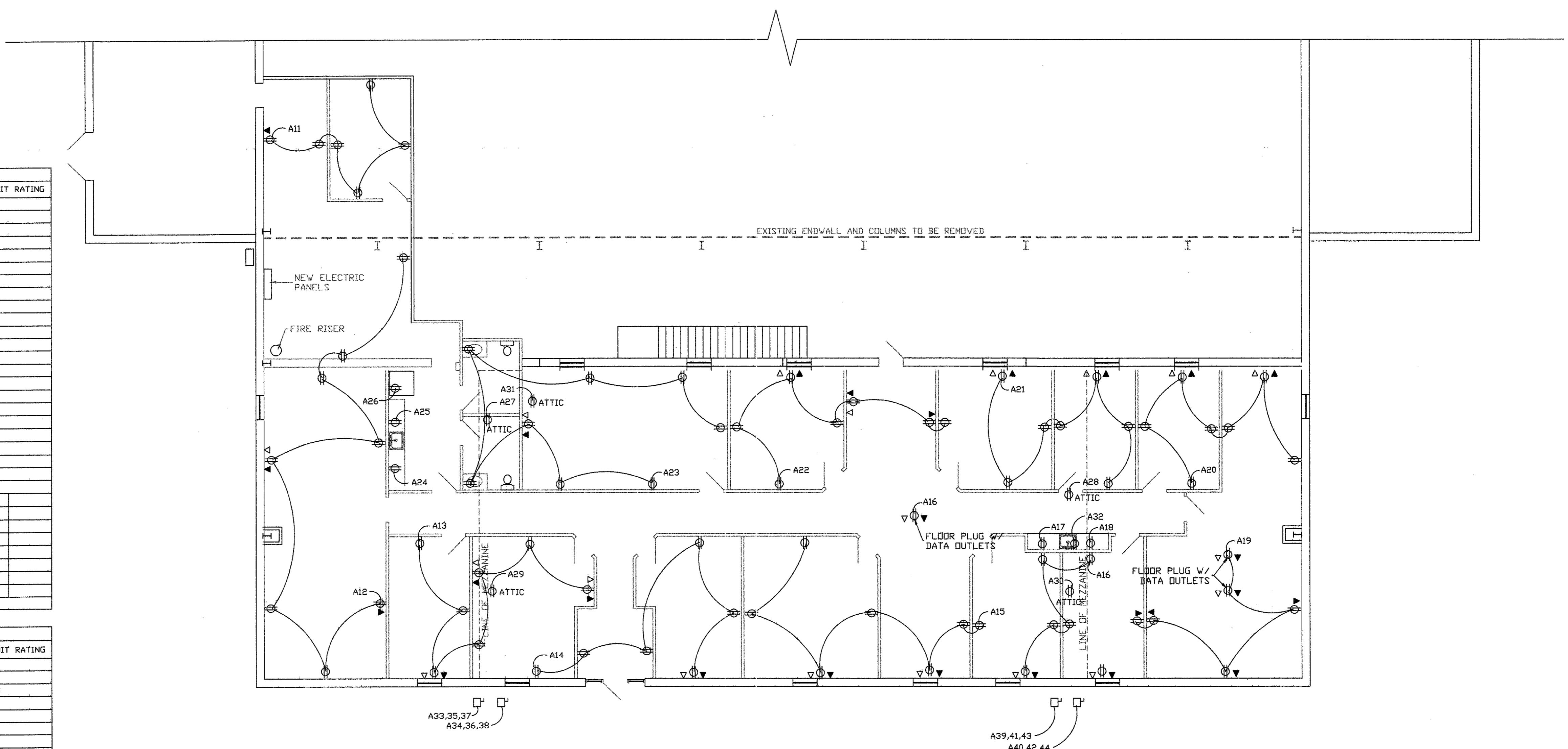
PANEL - A											
MLD											
300 AMPS	120/208	VOLTS	3 PHASE			4 WIRE		10,000 AMP SHORT CIRCUIT RATING			
DESCRIPTION	POLES	BKR	V.A. LOAD	CIRCUIT	V.A. LOAD	BKR	POLES	DESCRIPTION			
LIGHTS	1	20	960	1 A 2	960	20	1	LIGHTS			
LIGHTS	1	20	960	3 B 4	960	20	1	LIGHTS			
LIGHTS	1	20	1200	5 C 6	720	20	1	LIGHTS			
LIGHTS	1	20	720	7 A 8	960	20	1	LIGHTS			
LIGHTS	1	20	800	9 B 10	1200	20	1	LIGHTS			
OUTLETS	1	20	1080	11 C 12	1440	20	1	OUTLETS			
OUTLETS	1	20	1260	13 A 14	1440	20	1	OUTLETS			
OUTLETS	1	20	1260	15 B 16	1080	20	1	OUTLETS			
COFFEE	1	20	1200	17 C 18	1200	20	1	MICROWAVE			
OUTLETS	1	20	1080	19 A 20	1260	20	1	OUTLETS			
OUTLETS	1	20	1260	21 B 22	1260	20	1	OUTLETS			
OUTLETS	1	20	1440	23 C 24	1200	20	1	COFFEE			
MICROWAVE	1	20	1200	25 A 26	1200	20	1	REFRIGERATOR			
AHU-1	1	20	1200	27 B 28	1200	20	1	AHU-3			
AHU-2	1	20	1200	29 C 30	1200	20	1	AHU-4			
HWH	1	25	1650	31 A 32	1200	20	1	INSTA-HOT			
CU-1	3	30	2083	33 B 34	2083	30	3	CU-2			
CU-1	3	30	2083	35 C 36	2083	30	3	CU-2			
CU-1	3	30	2083	37 A 38	2083	30	3	CU-2			
CU-3	3	30	2083	39 B 40	2083	30	3	CU-4			
CU-3	3	30	2083	41 C 42	2083	30	3	CU-4			
MOUNTING			CONNECTED LOAD			DEMAND FACTOR			DEMAND LOAD		
LOCATION			A	B	C	A	B	C			

PANEL - A													
MLD													
300 AMPS	120/208	VOLTS	3 PHASE			4 WIRE		10,000 AMP SHORT CIRCUIT RATING					
DESCRIPTION	POLES	BKR	V.A. LOAD	CIRCUIT	V.A. LOAD	BKR	POLES	DESCRIPTION					
CU-3	30	2083	43 A 44	2083	30	3	3	CU-4					
MEZZ LIGHTS	1	20	2100	45 B 46	1440	20	1	MEZZ OUTLETS					
LIGHTS	1	20	2100	47 C 48	960	20	1	LIGHTS					
LIGHTS	1	20	2250	49 A 50									
			51 B 52										
			53 C 54										
			55 A 56										
			57 B 58										
			59 C 60										
			61 A 62										
			63 B 64										
			65 C 66										
			67 A 68										
			69 B 70										
			71 C 72										
			73 A 74										
			75 B 76										
			77 C 78										
			79 A 80										
			81 B 82										
			83 C 84										
MOUNTING			CONNECTED LOAD			DEMAND FACTOR			DEMAND LOAD				
LOCATION			A	B	C	A	B	C					
			LIGHTS	4560	5120	3840	1.25	5700	6400	4800			
			OUTLETS	10290	8700	9960	-0-	10290	8700	9960			
			A/C	8332	8332	8332	-0-	8332	8332	8332			
PANEL TOTAL									24322	23432	23092		
TOTAL LOAD			70,846 / 360 = 196.8A										

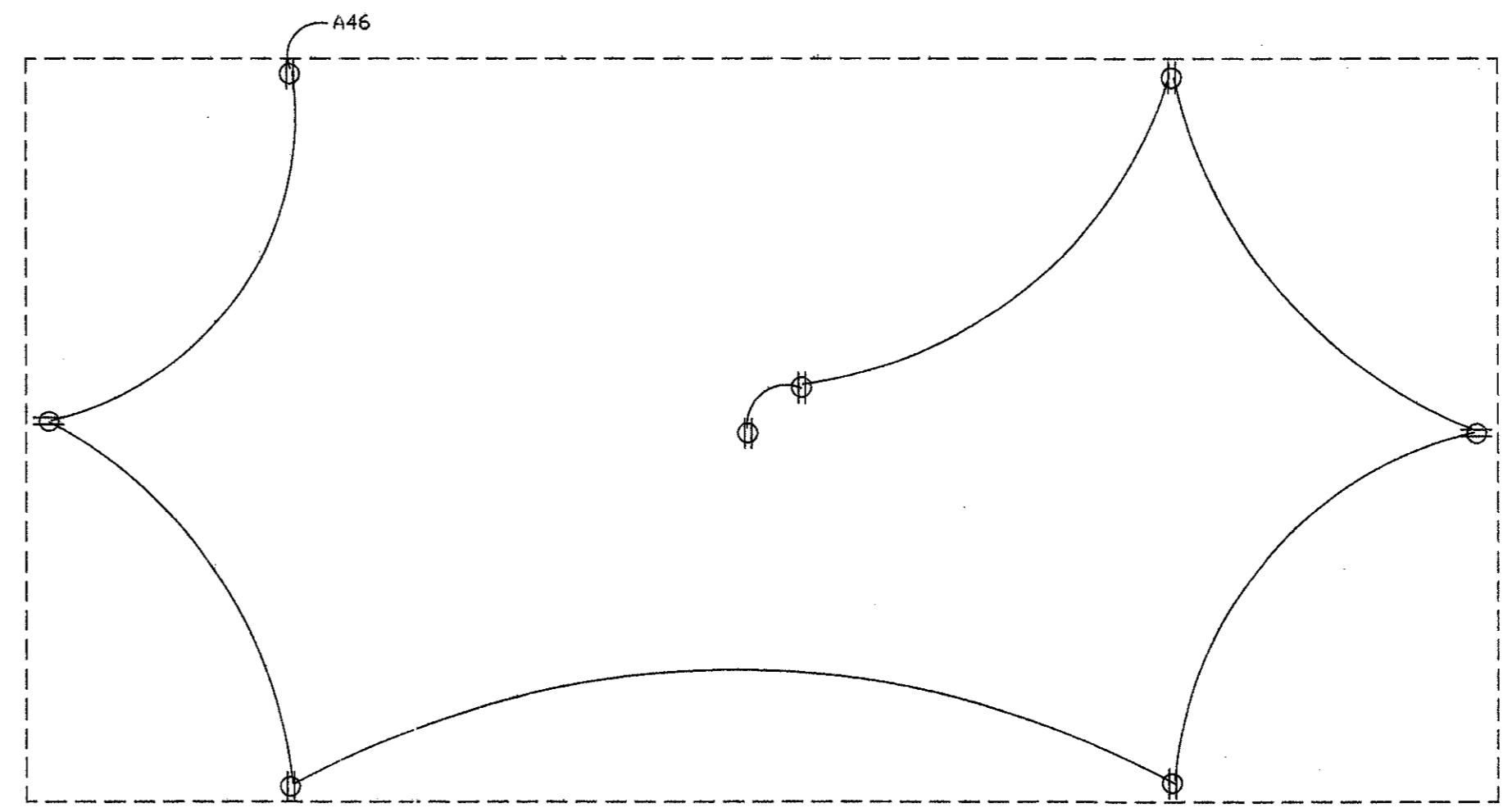
NOTE: ELECTRICAL CONTRACTOR TO VERIFY BREAKER SIZE & HOOK UP REQUIREMENTS WITH HVAC CONTRACTOR AND EQUIPMENT SUPPLY.



3 ELECTRICAL RISER
SCALE: N.T.S.



1 ELECTRICAL PLAN
SCALE: 1/8" = 1'



2 MEZZANINE ELECTRICAL
SCALE: 1/8" = 1'

LEGEND	
⊕HB	HOSE BIBB
⊕	SWITCH
⊕3	THREE-WAY SWITCH
⊕	DUPLEX OUTLET
⊕GFI	GFI DUPLEX OUTLET
⊕	220V OUTLET
⊕	EXHAUST FAN
⊕	EXIT LIGHT
⊕	COMM. PULL BDX
⊕	COMPUTER
⊕	DISCONNECT
⊕	EMERGENCY LIGHT
⊕	250V WALL PACK

NOTE TO BIDDERS:
THE INTENT OF THE DRAWINGS HEREIN IS TO PROVIDE A GENERAL GUIDE TO THE SYSTEMS TO BE INSTALLED. THE CONTRACTOR SHALL BE RESPONSIBLE FOR PROVIDING AND INSTALLING A COMPLETE WORKING SYSTEM WHETHER SHOWN OR NOT ON THE DRAWINGS.

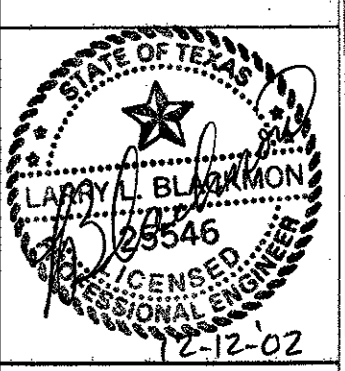
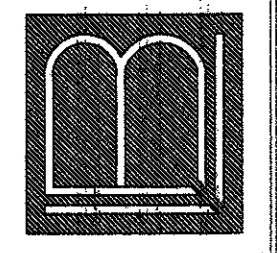
REVISIONS

ADDISON AIRPORT ADDITION

ADDISON, TEXAS

ENGINEERING
BUILDING DESIGN

LARRY L. BLACKMON 3505 JIM WRIGHT FRVY.
FORT WORTH, TEXAS 76106 (817) 737-8004



DATE 12/12/02

SCALE 1/8" = 1'

DRAWING NO.

E2