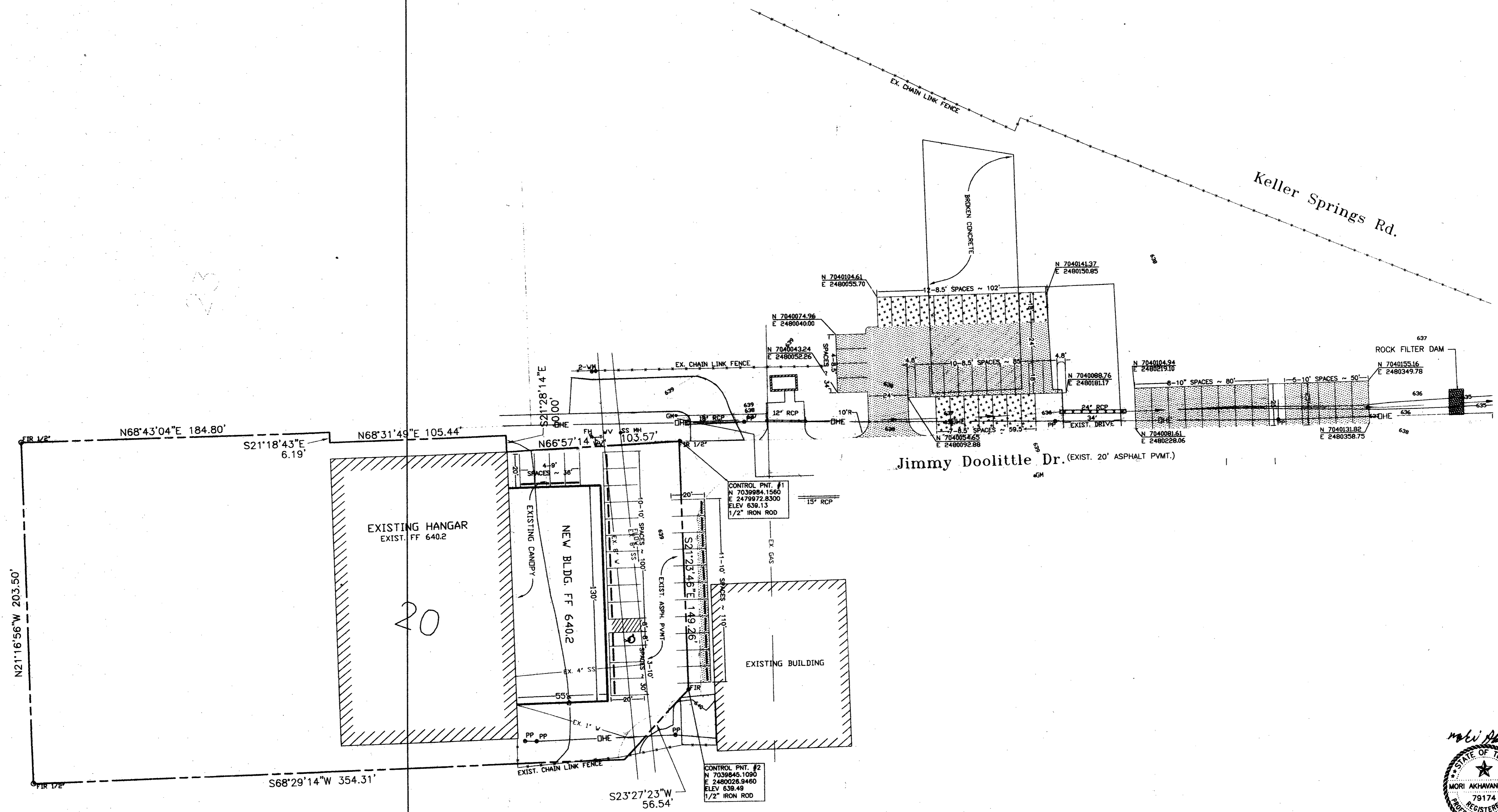


LEGEND

- EXIST. CONCRETE (TO REMAIN)
- EXIST. CONCRETE (TO BE REMOVED)
- NEW ASPH. CONCRETE PARKING AREA (PHASE I)
- NEW ASPH. CONCRETE PARKING AREA (PHASE II)
- NEW CURB STOP



FOR: TURBINE AIRCRAFT SERVICES, INC.
EXISTING AND PROPOSED BUILDING
4550 JIMMY DOOLITTLE DRIVE
ADDISON AIRPORT-ADDISON, TX 75001

DAI TECH
ENGINEERING, INC.
17311 DALLAS PARKWAY
SUITE 200
DALLAS, TX 75248
PHONE: (972) 250-2727
FAX: (972) 250-4774

REVISIONS:

DATE	REVISION

PROJECT:
ADDISON AIRPORT ADDITION
ADDISON, TEXAS

SHEET TITLE
SITE PLAN

DATE: Dec. 31, 2002

SCALE: 1"=30'

DRAWN BY: REH

CHECKED BY: MA

SHEET NO.
3 OF 4

DTE FILE NO. 0233

