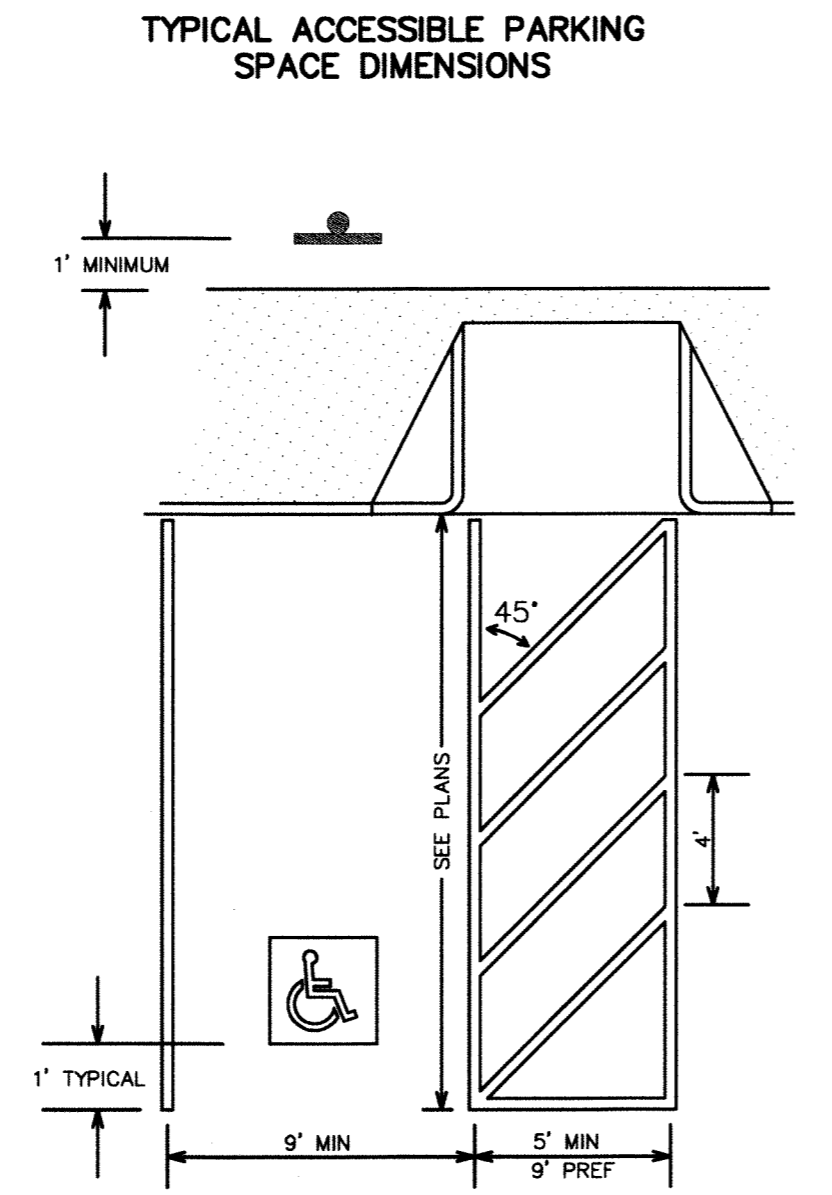
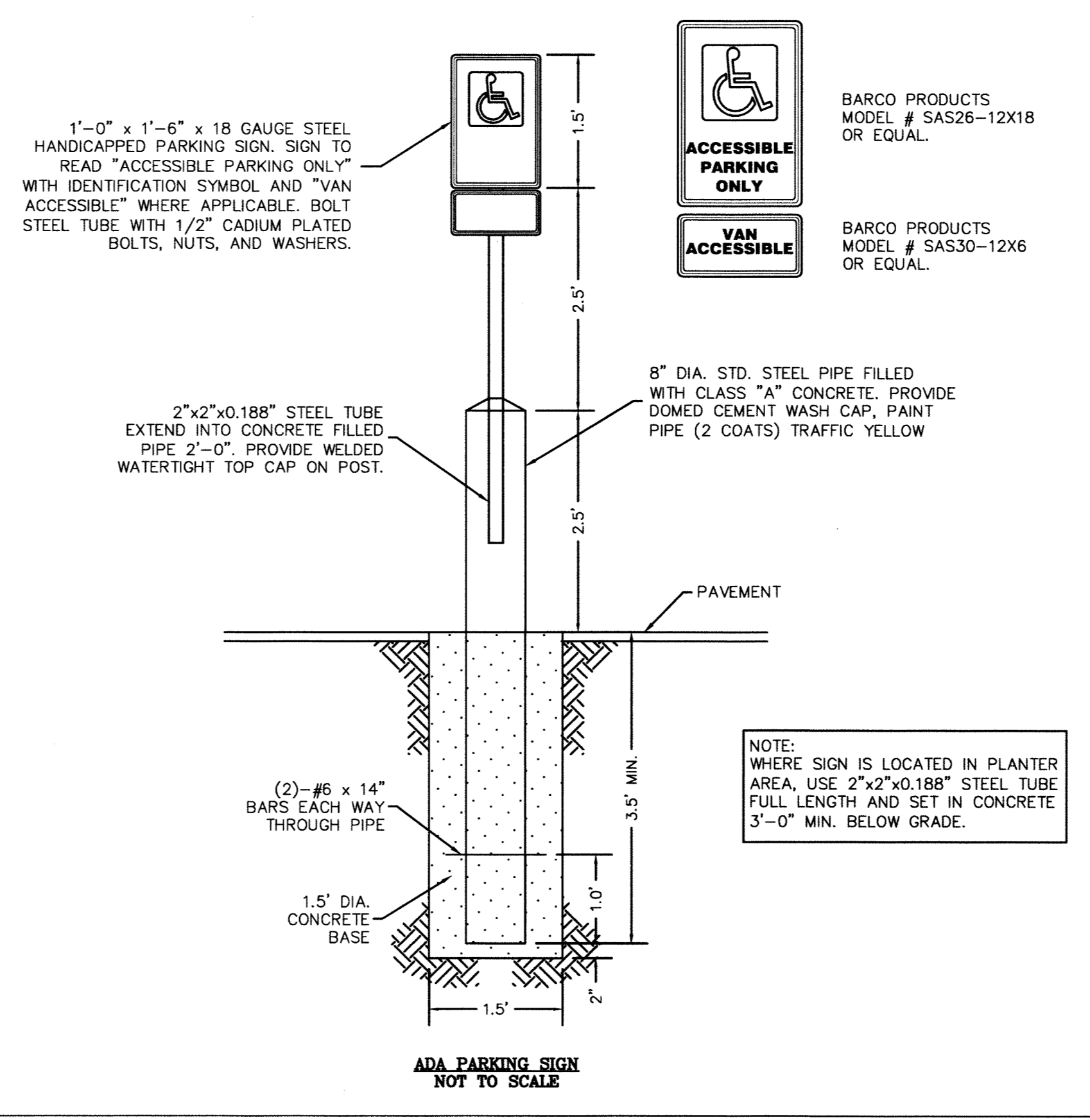


WITH BACKGROUND
SYMBOL & BORDER: WHITE
BACKGROUND: BLUE

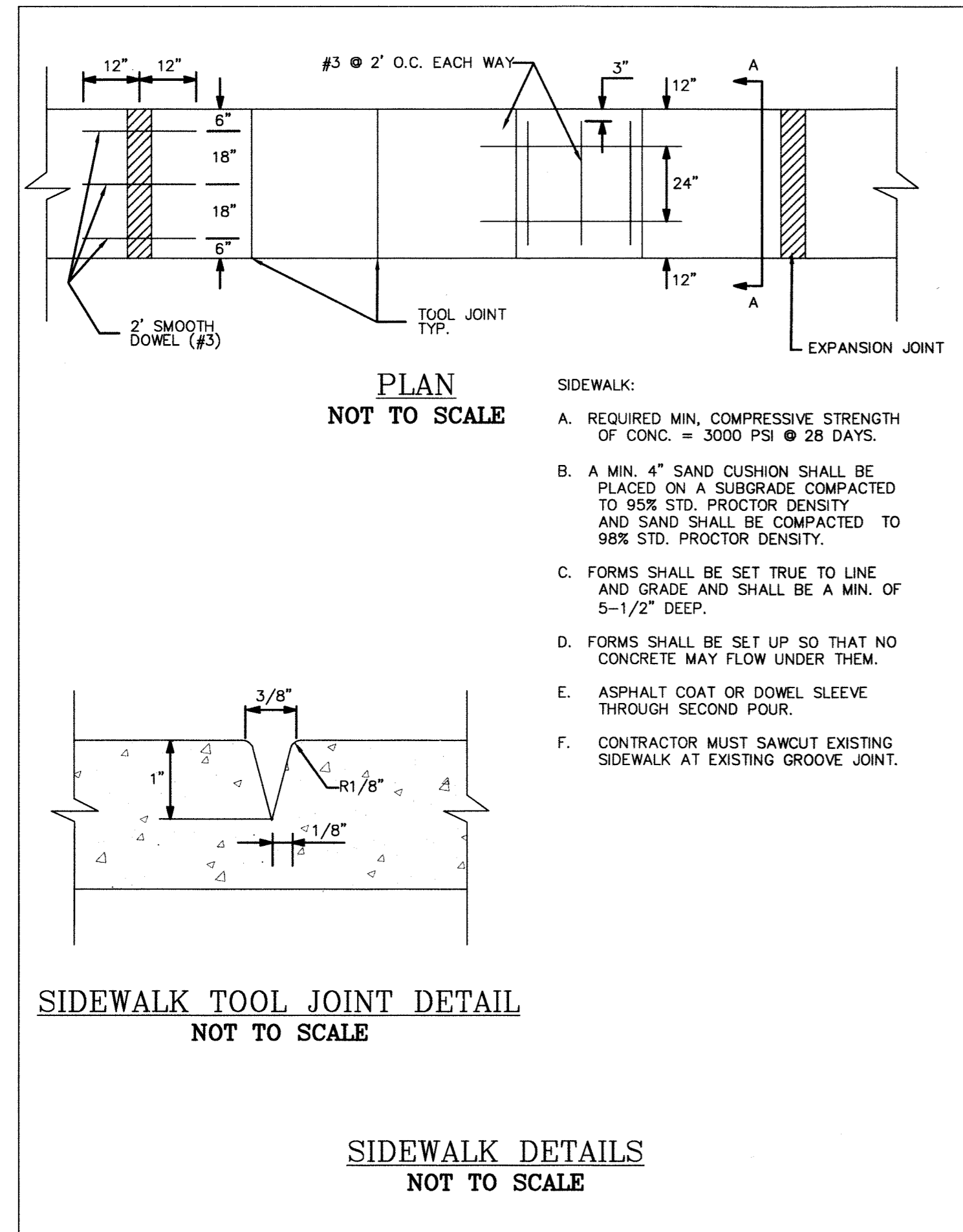
SYMBOL ONLY SYMBOL: BLUE OR WHITE



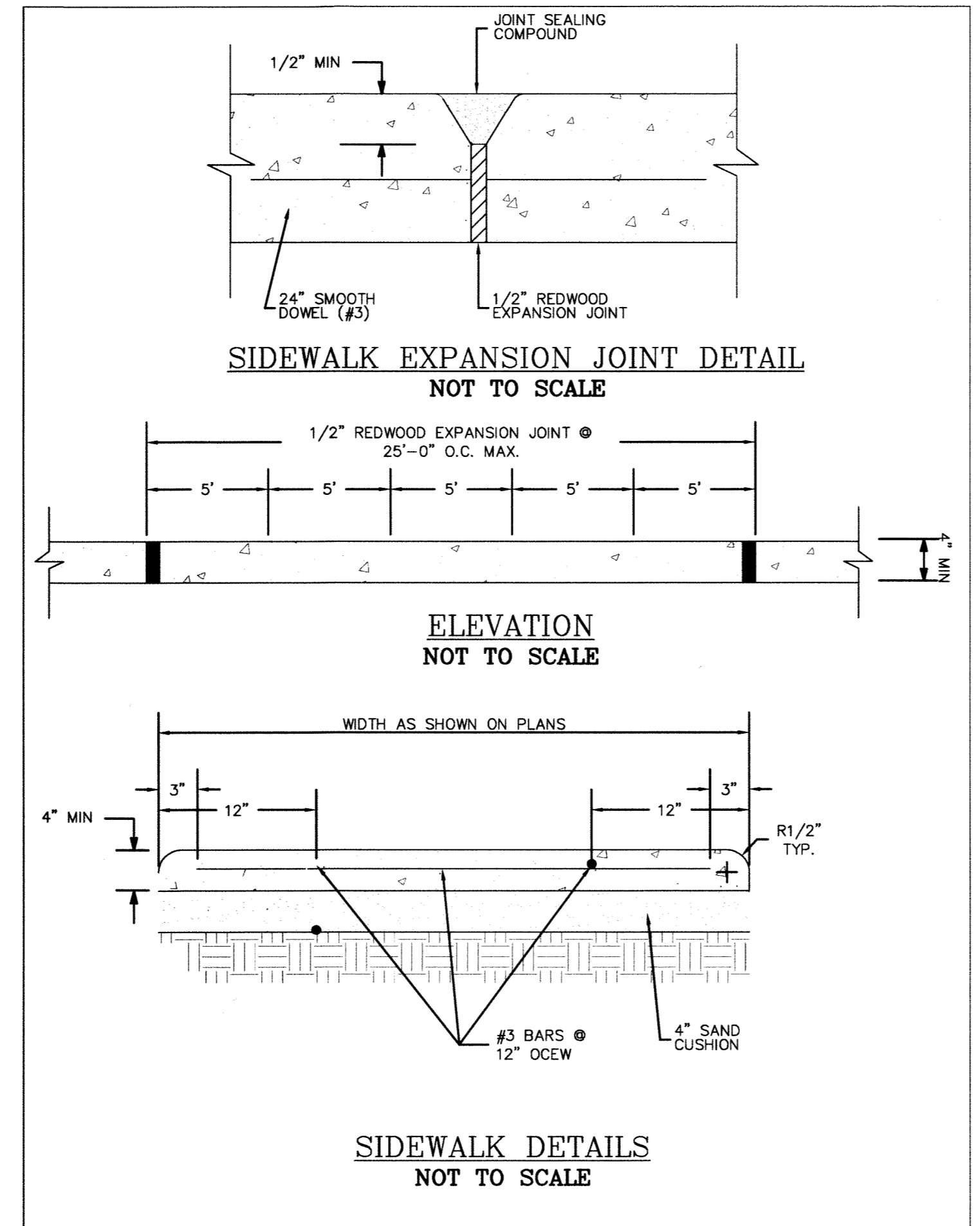
RAMP DETAILS ARE AS SHOWN ELSEWHERE IN THE PLANS.



- GENERAL NOTES**
- ALL PARKING SPACE LIMIT LINES SHALL BE 4" SOLID WHITE LINES.
 - AISLE MARKINGS SHOWN ARE EXAMPLES ONLY. OTHER METHODS TO INDICATE A NO PARKING AREA ARE ACCEPTABLE. AISLE MARKINGS SHALL BE WHITE.
 - DIMENSIONS OF LIMIT LINES, AISLE MARKINGS, AND SYMBOL (WITH OR WITHOUT BACKGROUND) MAY VARY + 10%.
 - PAVEMENT MARKING SYMBOLS (WITH BACKGROUND):
 - ARE REQUIRED UNLESS STATED ELSEWHERE IN THE PLANS.
 - SHOULD BE PLACED TOWARD THE FAR END OF THE PARKING SPACES SO AS TO BE VISIBLE TO MOTORISTS IN THE TRAVEL LANE.
 - MAY BE PAINTED OR PREFABRICATED MATERIAL, AND SHALL CONFORM TO THE ILLUSTRATED COLORS FOR BACKGROUND, SYMBOL AND BORDER.
 - WITH APPROVAL OF THE ENGINEER, PREFABRICATED PAVEMENT MARKING SYMBOLS WITH BACKGROUND OF OTHER DIMENSIONS EXCEEDING THE 30" X 30" MINIMUM MAY BE USED. ALTERNATIVE DESIGNS SHALL INCLUDE A PROPORTION SIZED SYMBOL OF ACCESSIBILITY, AND SHALL CONFORM TO THE ILLUSTRATED COLORS FOR BACKGROUND, SYMBOL AND BORDER.
 - AN R7-8 SIGN:
 - SHALL BE REQUIRED FOR EACH ACCESSIBLE PARKING SPACE.
 - SHALL NOT BE PLACED BETWEEN TWO ACCESSIBLE PARKING SPACES.
 - SHALL NOT BE PLACED IN A LOCATION THAT RESTRICTS MOVEMENT OF WHEELCHAIRS WITHIN THE ADJACENT SIDEWALK, AND
 - SHALL HAVE A MINIMUM MOUNTING HEIGHT OF 7 FEET IF MOUNTED TO WALL OR LOCATED SO AS NOT TO BE NEAR PEDESTRIAN TRAFFIC MINIMUM MOUNTING HEIGHT MAY BE 7 FEET.
 - POST MOUNTED SIGNS SHOULD BE PLACED APPROXIMATELY 1 FOOT (OR GREATER) BEHIND THE CURB TO PREVENT DAMAGE FROM VEHICLE OVERHANGS.
 - SIGNS MAY BE MOUNTED DIRECTLY TO AN ADJACENT WALL OF A BUILDING WHEN POST MOUNTING IS IMPRACTICAL.



- SIDEWALK:**
- REQUIRED MIN. COMPRESSIVE STRENGTH OF CONC. = 3000 PSI @ 28 DAYS.
 - A MIN. 4" SAND CUSHION SHALL BE PLACED ON A SUBGRADE COMPACTED TO 95% STD. PROCTOR DENSITY AND SAND SHALL BE COMPACTED TO 98% STD. PROCTOR DENSITY.
 - FORMS SHALL BE SET TRUE TO LINE AND GRADE AND SHALL BE A MIN. OF 5-1/2" DEEP.
 - FORMS SHALL BE SET UP SO THAT NO CONCRETE MAY FLOW UNDER THEM.
 - ASPHALT COAT OR DOWEL SLEEVE THROUGH SECOND POUR.
 - CONTRACTOR MUST SAWCUT EXISTING SIDEWALK AT EXISTING GROOVE JOINT.



CONTACT CLAY BARNETT, P.E. WITH THE TOWN OF ADDISON FOR A COPY OF THE CONSTRUCTION DETAILS BELOW. (972-450-2857) CBARNETT@ADDISONTX.GOV

TOWN OF ADDISON CONSTRUCTION DETAILS:

- REINFORCED CONCRETE PAVEMENT JOINTS DETAIL.
- CONCRETE CURB & GUTTER DETAIL.
- FIRE HYDRANT INSTALLATION DETAIL.
- TYPICAL PIPE INSTALLATION AND EMBEDMENT DETAIL.

RECORD DRAWING

The record drawing herein reflects to the best of the design engineer's knowledge, the approximate location of the constructed improvements using information provided by the contractor.

Steven R. Homeyer, P.E. #86942
Date: 4-15-11



DRAWN: HEI
DATE: 12/18/08
HEI #: 08-152
SHEET NO: C7

HOMEYER ENGINEERING, INC.
CIVIL ENGINEERING, PLANNING, SITE & LAND PLANNING
P.O. BOX 294527 • LEWISVILLE, TEXAS 75029
972-906-9985 PHONE • 972-906-9987 FAX
WWW.HOMEYERENGINEERING.COM

TURBINE AIR EXPANSION
ADDISON AIRPORT, BLDG. A-5
2.404 ACRES, ZONED - I-3
4650 JIMMY DOOLITTLE DRIVE
TOWN OF ADDISON
DALLAS COUNTY, TEXAS

DETAILS