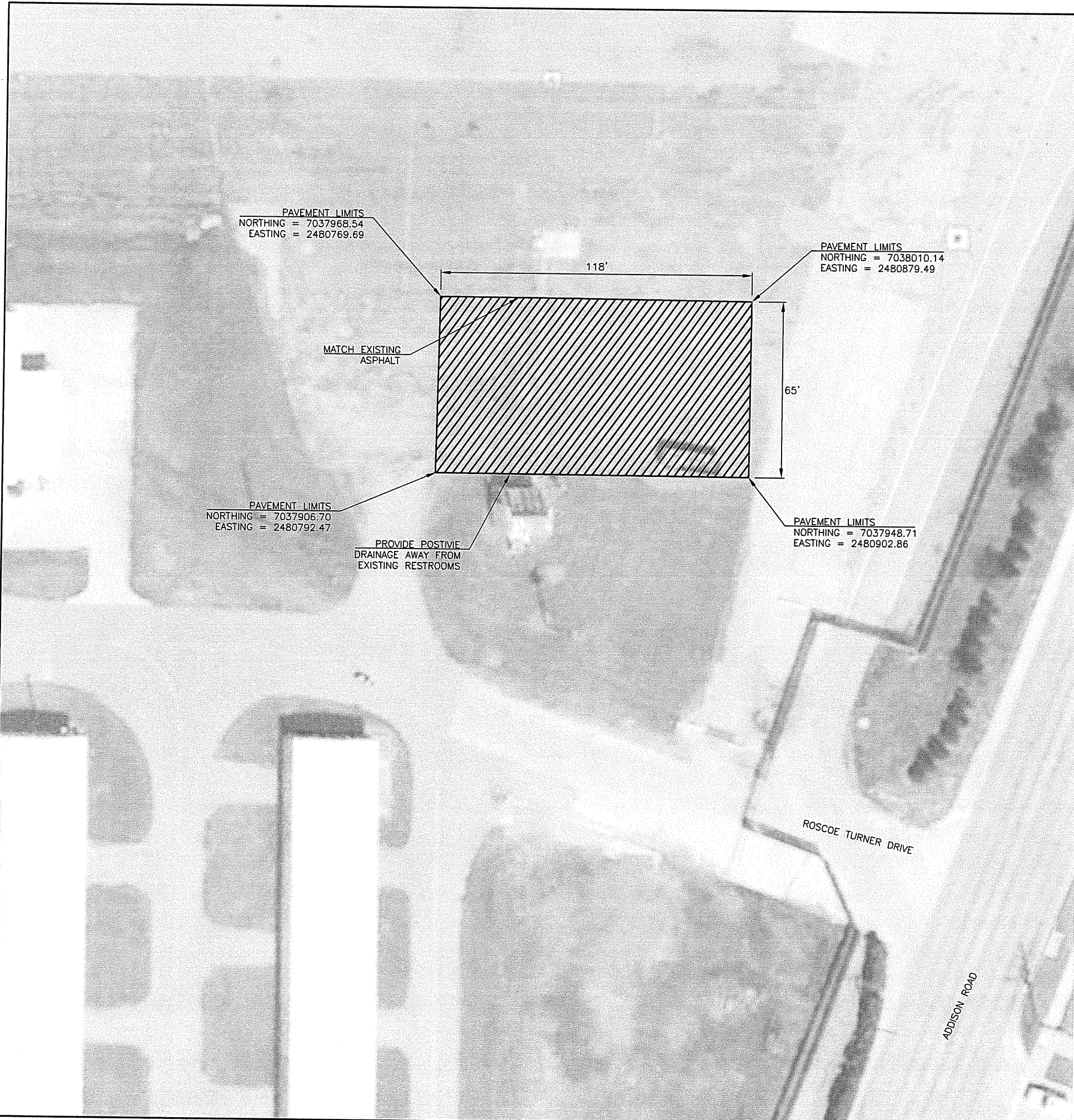


FILED: 2012/07/20 2:08 PM C:\Users\mrm\Documents\Projects\Addison Airport\Drawings\APRON\APRON.dwg 11:00 AM Last saved by: MrMcconnally
 User: MrMcconnally Plot Path: C:\Users\mrm\Documents\Projects\Addison Airport\Drawings\APRON\APRON.dwg Plotter: AutoCAD
 Plot Date: 7/20/2012 2:08 PM Plot Size: 11.00 x 17.00 inches Plot Scale: 1.0000



PAVEMENT LIMITS
 NORTHING = 7037968.54
 EASTING = 2480769.69

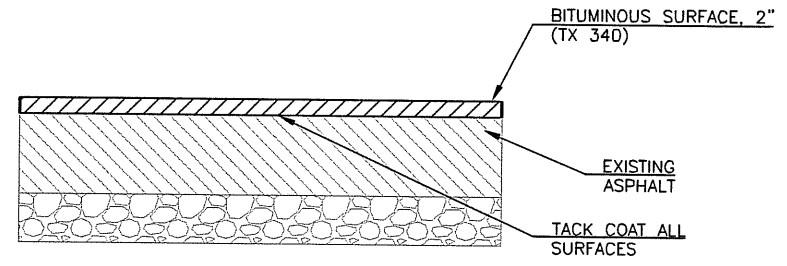
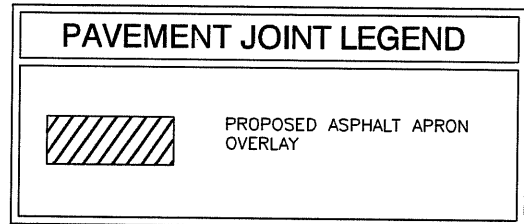
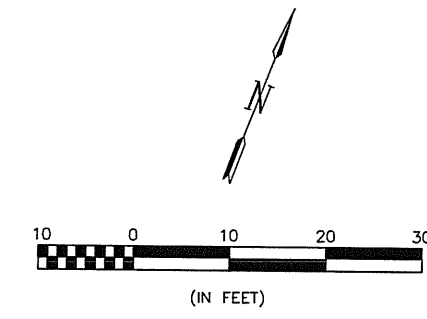
PAVEMENT LIMITS
 NORTHING = 7038010.14
 EASTING = 2480879.49

PAVEMENT LIMITS
 NORTHING = 7037906.70
 EASTING = 2480792.47

PAVEMENT LIMITS
 NORTHING = 7037948.71
 EASTING = 2480902.86

MATCH EXISTING
 ASPHALT

PROVIDE POSITIVE
 DRAINAGE AWAY FROM
 EXISTING RESTROOMS

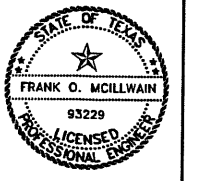


ASPHALT OVERLAY DETAIL
 SCALE: NONE

RECORD DRAWINGS
 10-30-2012



REGISTRATION NO.
 F-5713



REV.	DATE	DESCRIPTION	BY

ADDISON AIRPORT
 ADDISON, TX
 S-1 PARKING LOT IMPROVEMENTS

SOUTH RESTROOM
 APRON PAVING PLAN-
 ADD ALTERNATE 1

JOB NO.: 12081100
 DATE: JULY, 2012
 DESIGNED BY: MRM
 DRAWN BY: EGC

BAR IS ONE INCH ON
 ORIGINAL DRAWING
 IF NOT ONE INCH ON
 THIS SHEET, ADJUST
 SCALES ACCORDINGLY.

SHEET NUMBER
C-107