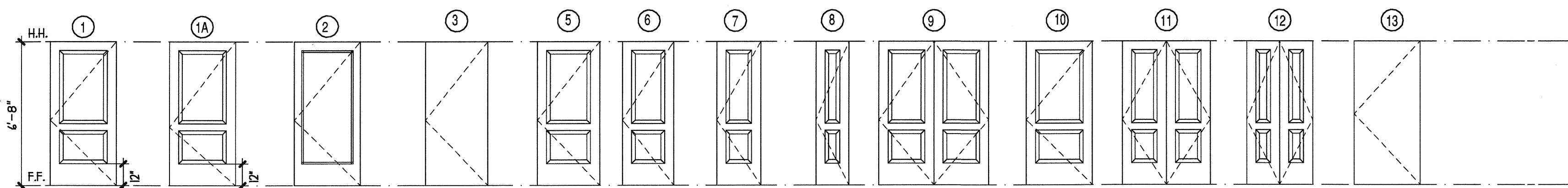
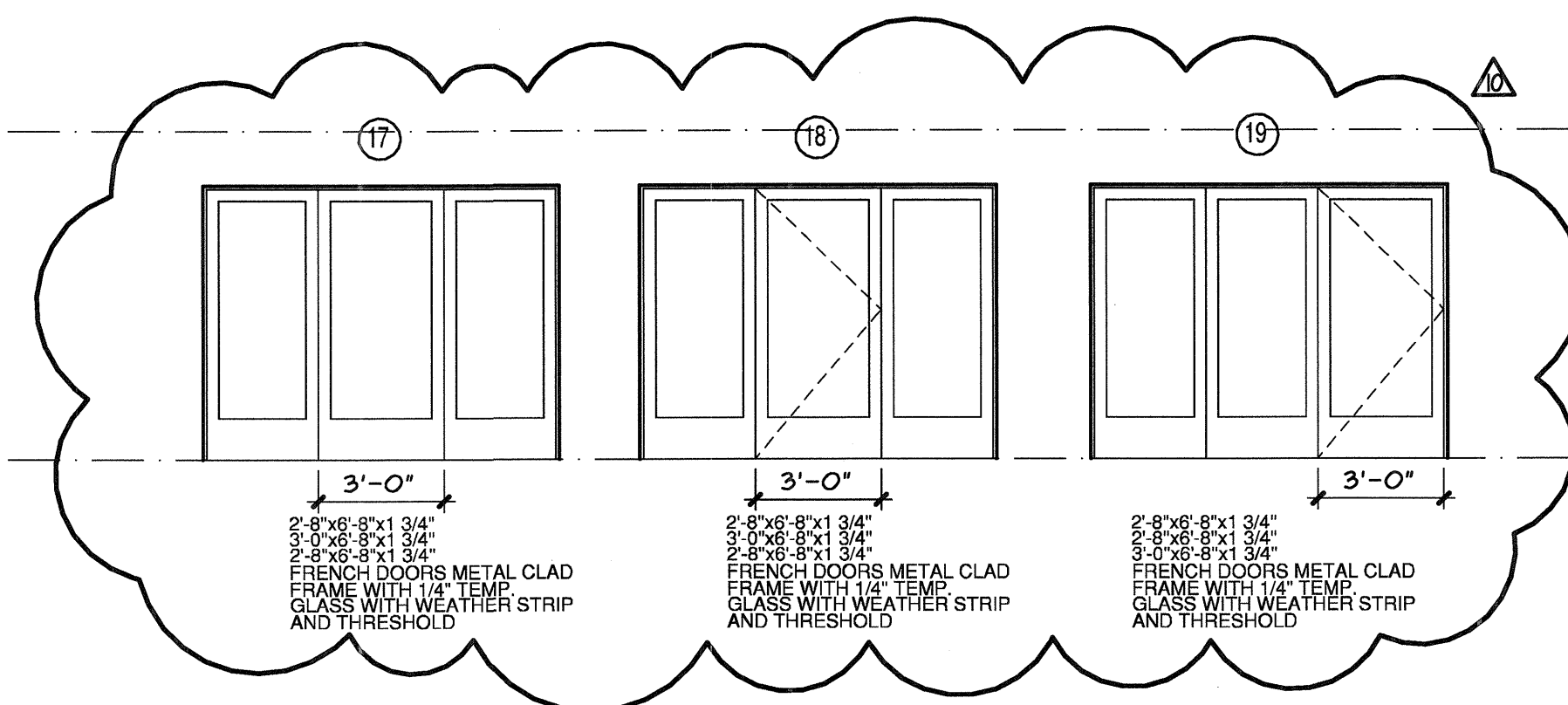


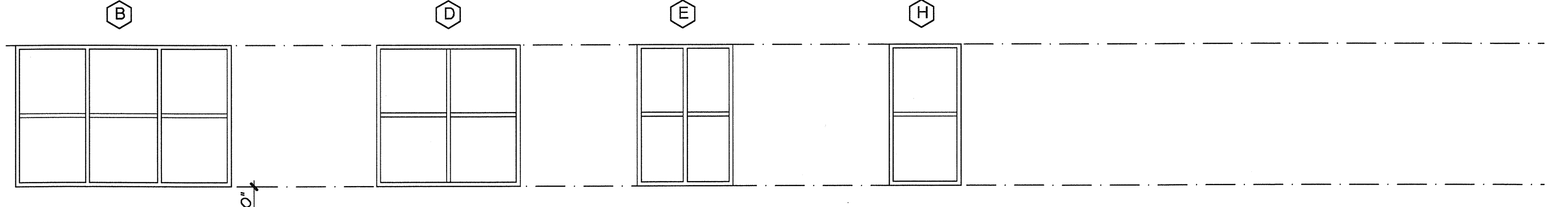
DOOR/WINDOW SCHEDULE



1 3-OX6-8 1 3/4" SC WOOD EXTERIOR GRADE W/ WEATHERSTRIP AND THRESHOLD 20 MIN ASSEMBLY WITH SMOKE SEAL, CLOSURE, LATCH AND LABELED DOOR 1 FRAME 2-PANEL
1A 3-OX6-8 1 3/4" SC WOOD EXTERIOR GRADE W/ WEATHERSTRIP AND THRESHOLD 90 MIN ASSEMBLY WITH SMOKE SEAL, CLOSURE, LATCH AND LABELED DOOR 1 FRAME UNIT ONLY (AS PART 3) 2-PANEL
2 3-OX6-8 1 3/4" FRENCH DOOR EXTERIOR GRADE W/ WEATHERSTRIP AND THRESHOLD 1/4" TEMPERED GLASS 2-PANEL
3 2-OX6-8 1 3/4" HTL INSULATED EXTERIOR GRADE W/ WEATHERSTRIP AND THRESHOLD
5 2-OX6-8 1 3/8" H.C. MASONITE 2-PANEL
6 2-4X4-8 1 3/8" H.C. MASONITE 2-PANEL
7 2-OX6-8 1 3/8" H.C. MASONITE 2-PANEL
8 1-OX6-8 1 3/8" H.C. MASONITE 2-PANEL
9 PR 2-6x8-8 3/4" H.C. MASONITE 2-PANEL
10 3-OX6-8 1 3/8" H.C. MASONITE 2-PANEL
11 PR 2-Ox6-8 3/4" H.C. MASONITE 2-PANEL
12 PR 1-OX6-8 1 3/8" H.C. MASONITE 2-PANEL
13 3-OX6-8 1 3/8" METAL NON-INSUL. HTL. JAMB PAINT GRADE NON-RATED LOCK SET

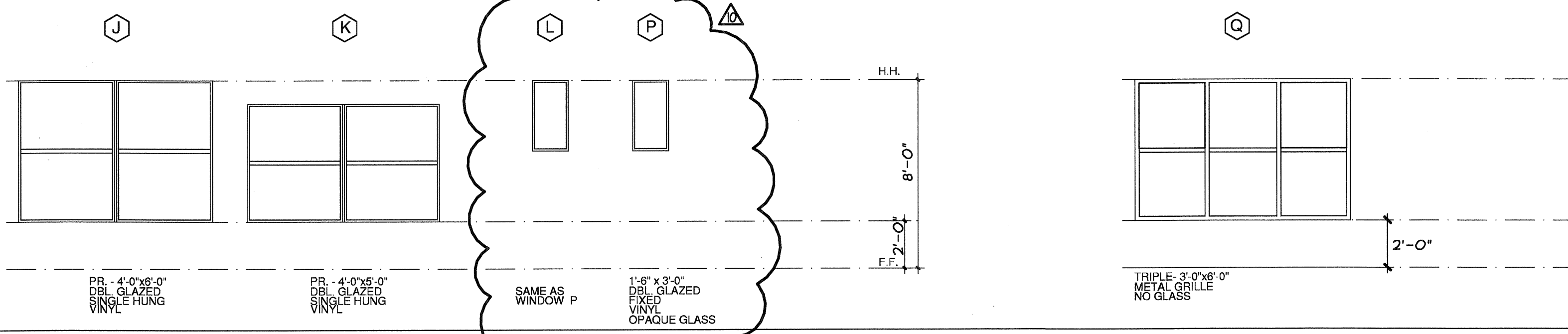


17 2-8"x6-8"x1 3/4" 3-8"x6-8"x1 3/4" 2-8"x6-8"x1 3/4" FRENCH DOORS METAL CLAD FRAME WITH 1/2" TEMP. GLASS WITH WEATHER STRIP AND THRESHOLD 3'-0"
18 2-8"x6-8"x1 3/4" 3-8"x6-8"x1 3/4" 2-8"x6-8"x1 3/4" FRENCH DOORS METAL CLAD FRAME WITH 1/2" TEMP. GLASS WITH WEATHER STRIP AND THRESHOLD 3'-0"
19 2-8"x6-8"x1 3/4" 3-8"x6-8"x1 3/4" 2-8"x6-8"x1 3/4" FRENCH DOORS METAL CLAD FRAME WITH 1/2" TEMP. GLASS WITH WEATHER STRIP AND THRESHOLD 3'-0"



B TRIPLE 3'-0"x6'-0" DBL. GLAZED VINYL SINGLE HUNG 2'-0"
D PR 3'-0"x6'-0" DBL. GLAZED VINYL SINGLE HUNG 2'-0"
E PR 2'-0"x6'-0" DBL. GLAZED VINYL SINGLE HUNG 2'-0"
H 3'-0"x6'-0" DBL. GLAZED VINYL SINGLE HUNG 2'-0"

METAL GRILLE



J PR 4'-0"x6'-0" DBL. GLAZED VINYL SINGLE HUNG 2'-0"
K PR 4'-0"x6'-0" DBL. GLAZED VINYL SINGLE HUNG 2'-0"
L SAME AS WINDOW P
P 1'-8" x 3'-0" DBL. GLAZED FIXED VINO OPAQUE GLASS 8'-0" H.H. 2'-0" F.F.

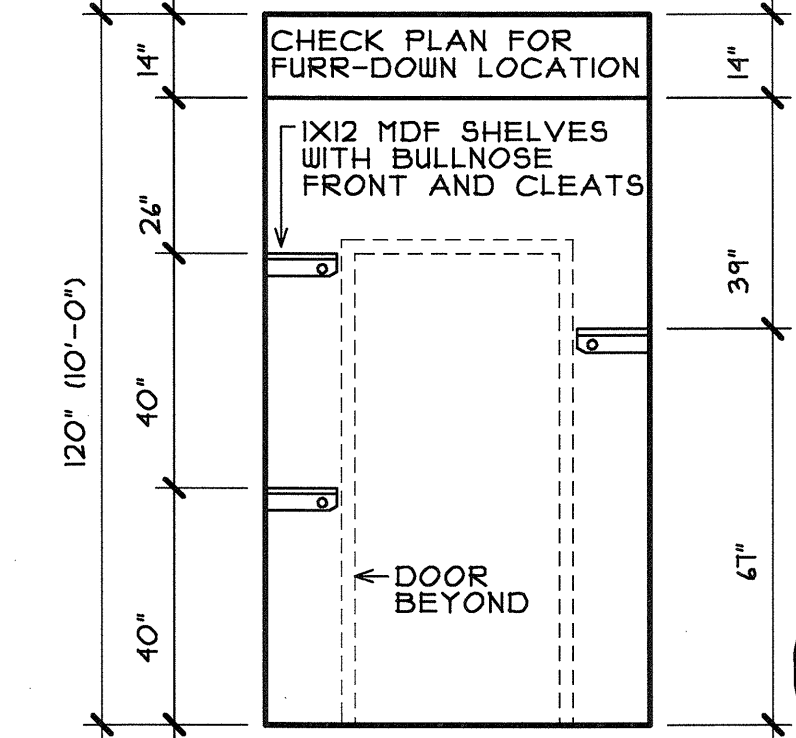
GENERAL NOTE:
FIRE EXTINGUISHER CABINETS MUST BE RATED AND GYPSUM BOARD MUST BE BLOCKED AROUND RECESS TO MAINTAIN FIRE RATING INTEGRITY.

GENERAL NOTE:
PROVIDE CONTROL JOINTS AT 30 FOOT INTERVALS AT GYPSUM WALLBOARD AND SOFFIT BOARD CONDITIONS IN CORRIDORS.

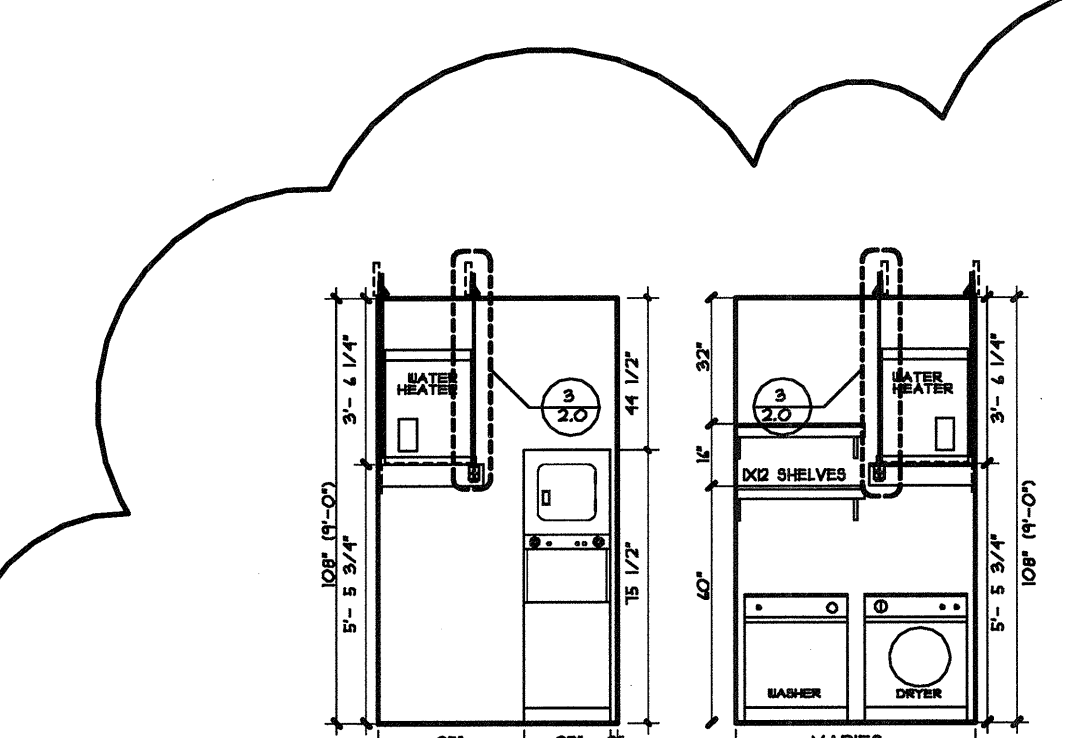
GENERAL NOTE:
FRAME ALL DOORS AT 4'-8" HEAD HEIGHT AND FRAME ALL WINDOWS AT 7'-8" HEAD HEIGHT. REFER TO UNIT PLANS FOR SPECIFIC WINDOWS AT BALCONY LOCATIONS TO BE FRAMED AT 6'-8"

REF 138

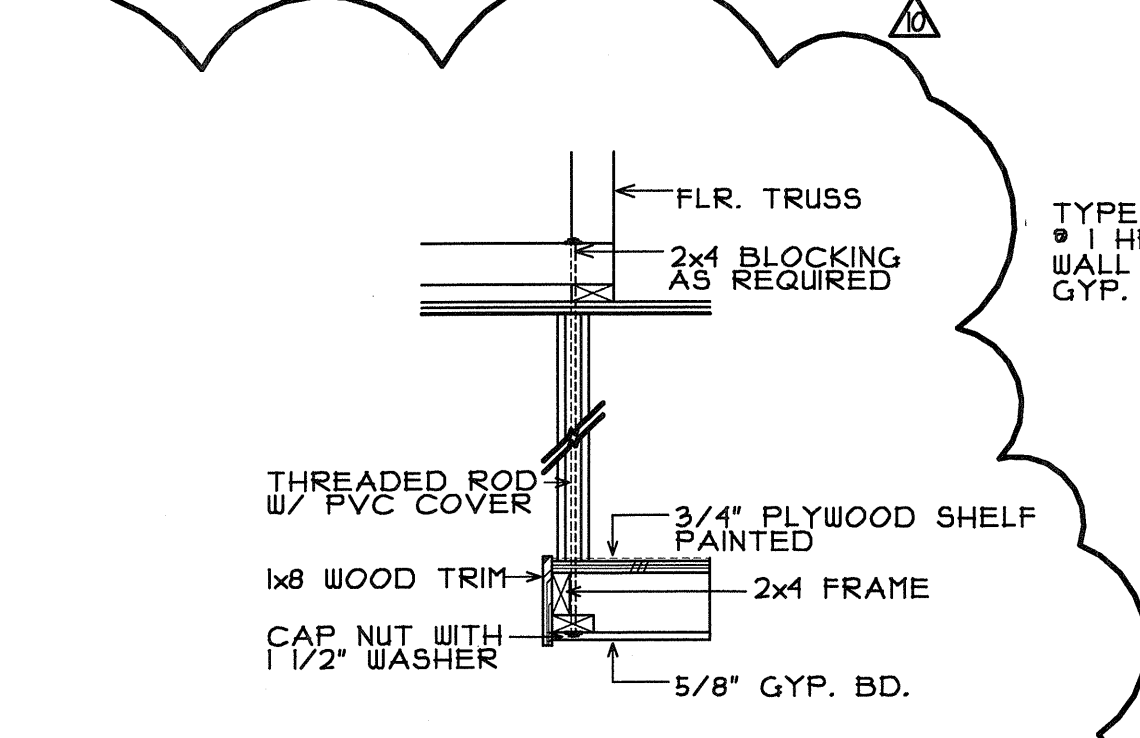
TYPICAL SECTIONS



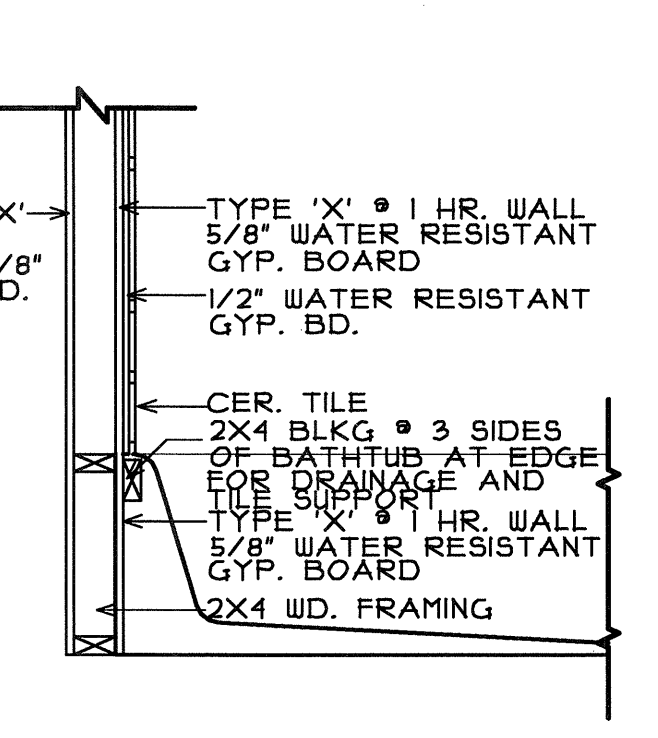
1 CLOSET
3/8"=1'-0"



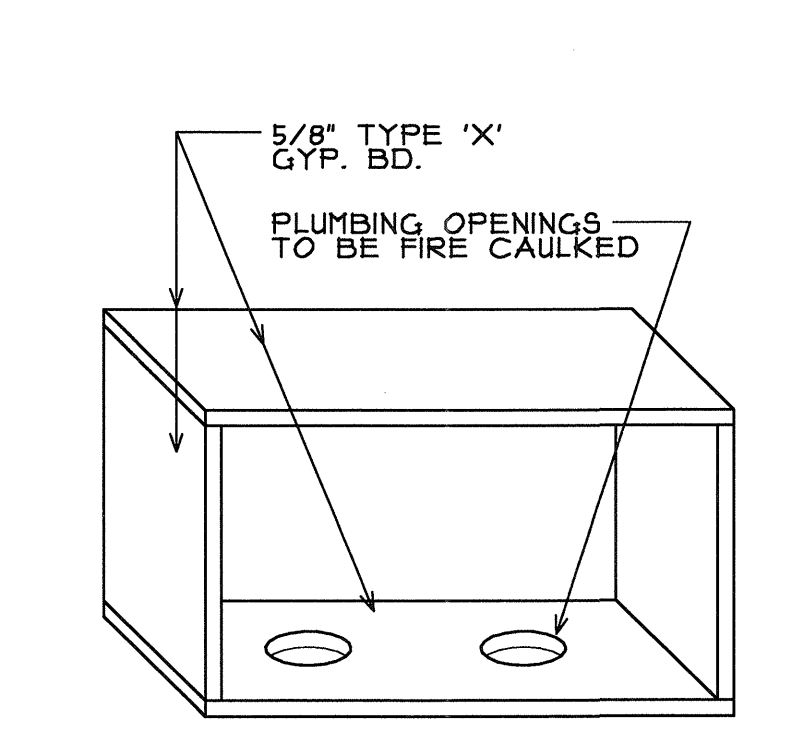
2 UTILITY ROOM
3/8"=1'-0"



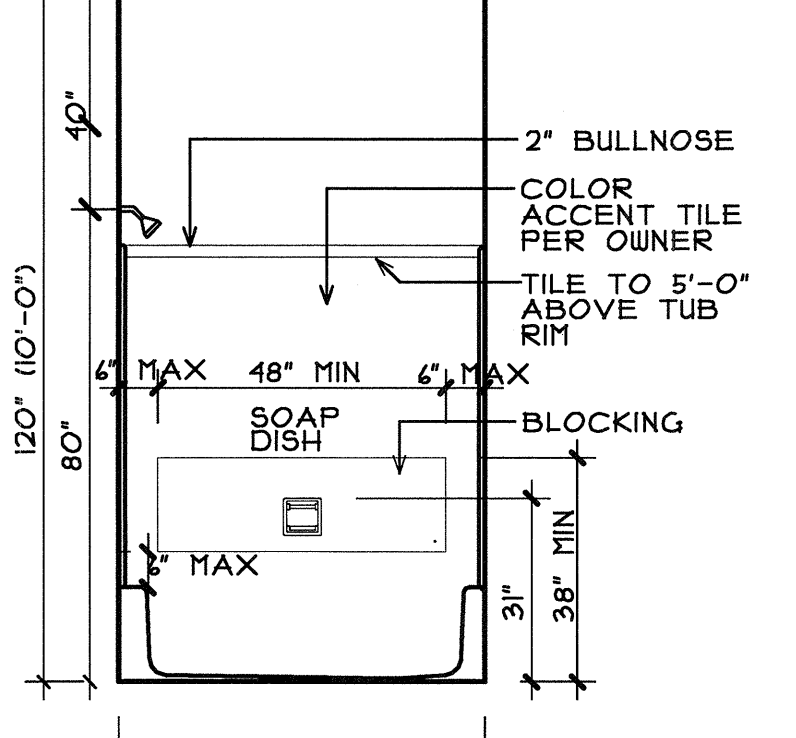
3 WATER HEATER SHELF AT UTILITY ROOM
1/2"=1'-0"



4 BATH TUB SECTION
3/4"=1'-0"



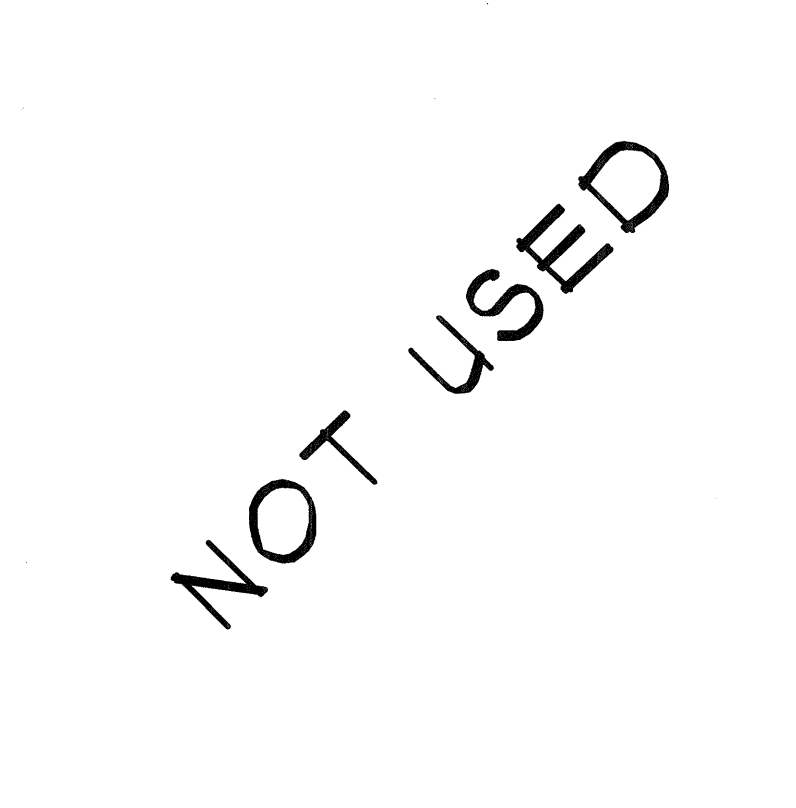
5 1 HR RATED 5 SIDED GYPSUM BOX W WASHER
NOT TO SCALE



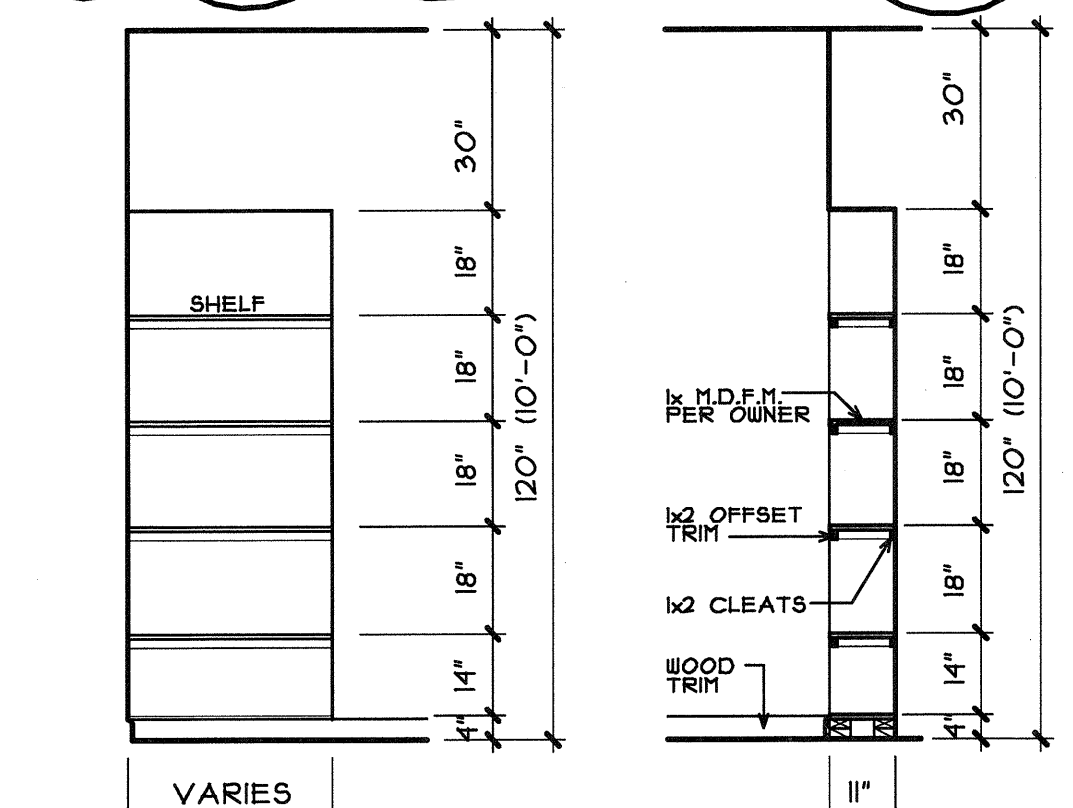
6 BATHTUB
SCALE 3/8"=1'-0"

NOT USED

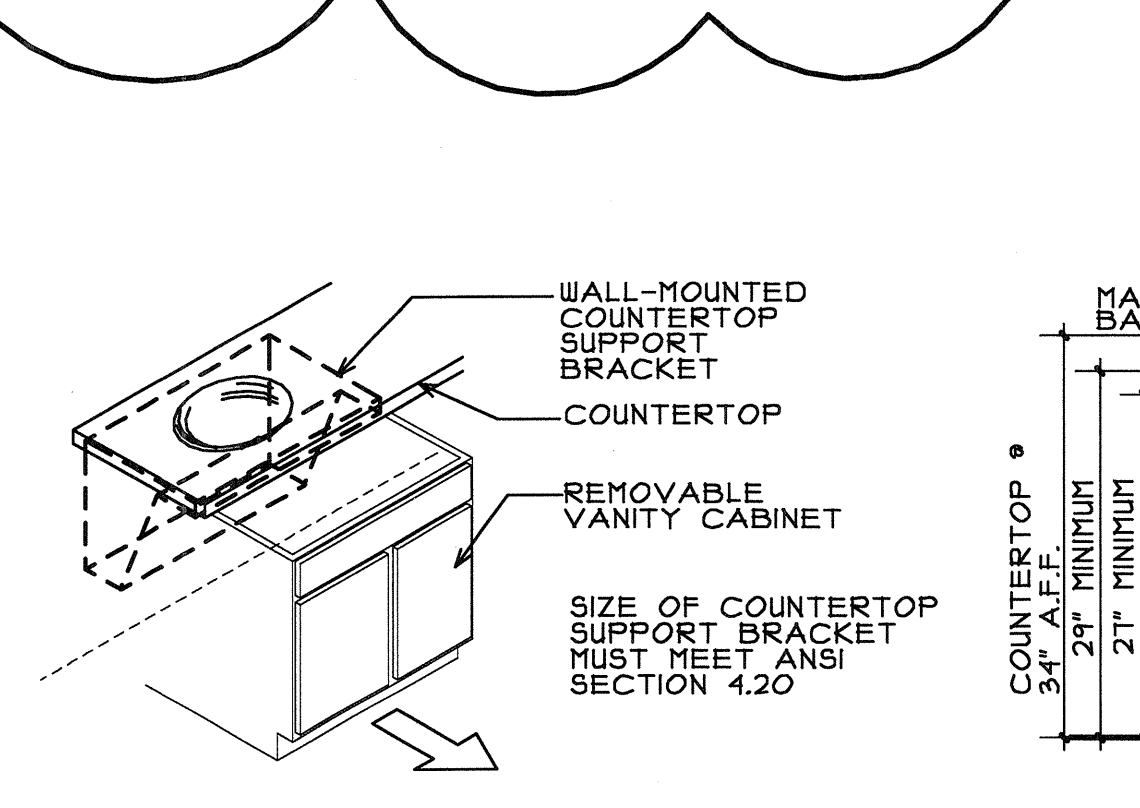
7
NOT TO SCALE



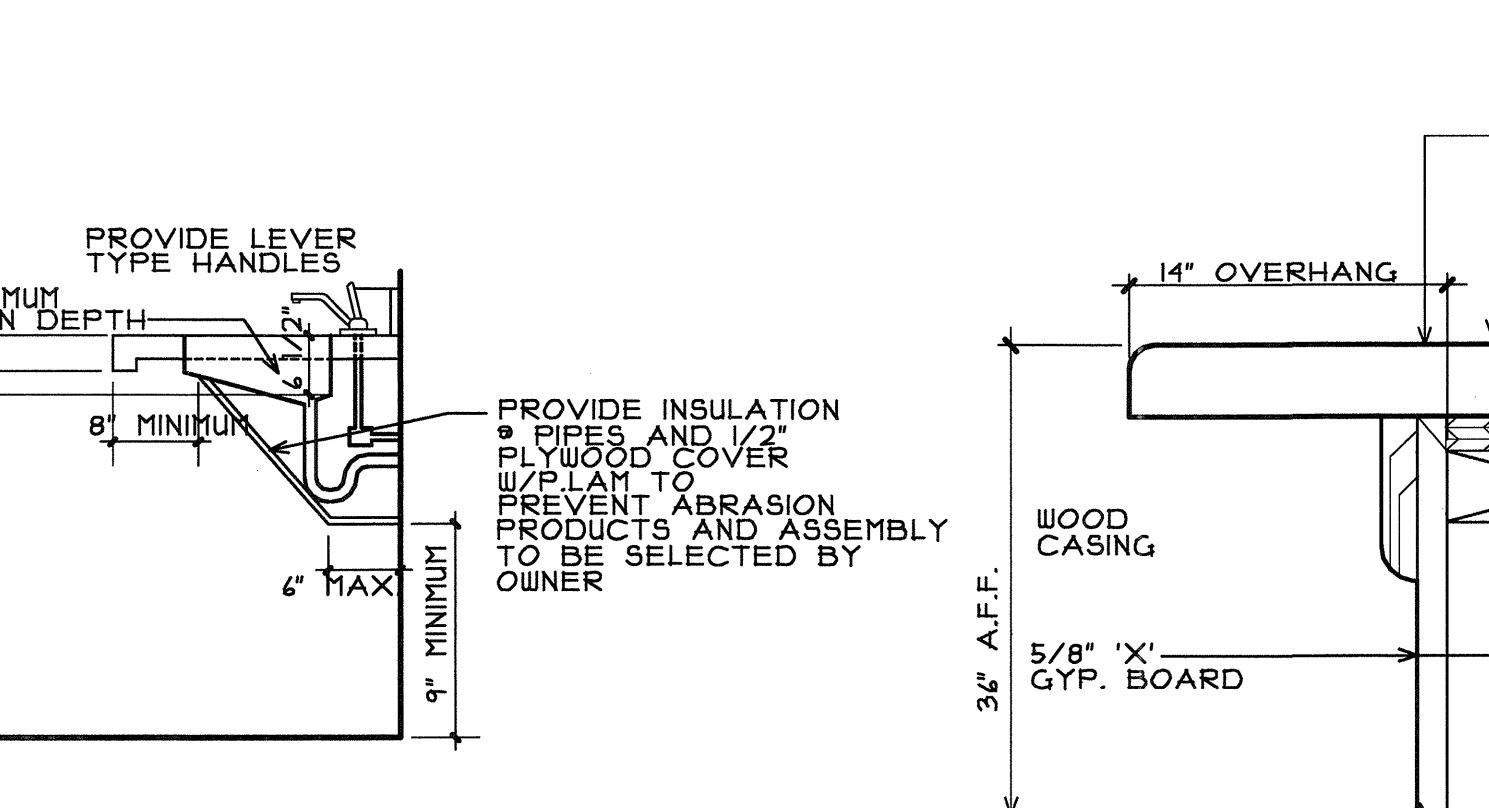
8
NOT TO SCALE



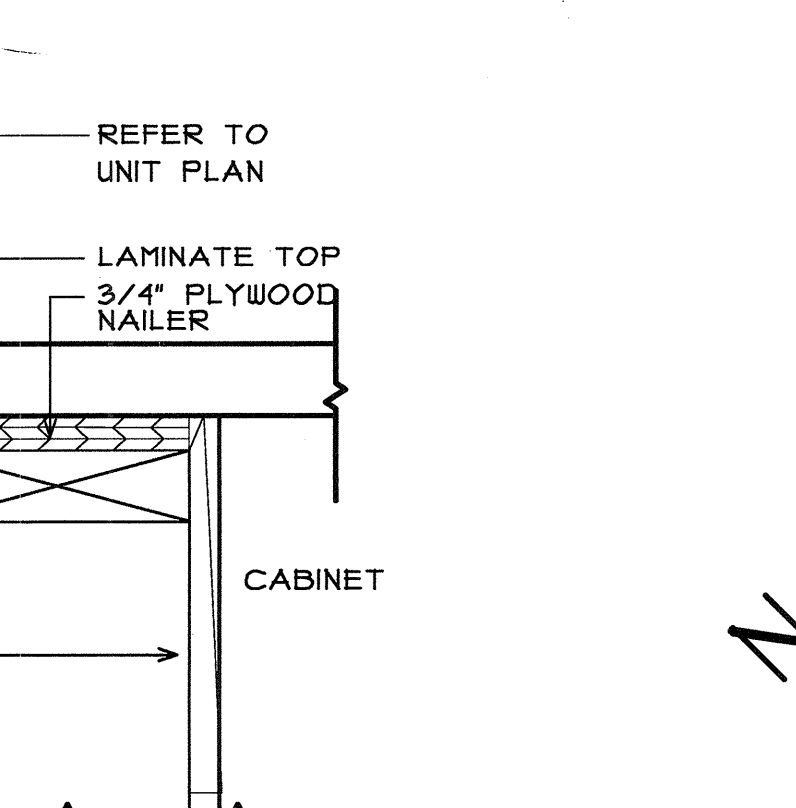
9 REMOVABLE VANITY CABINET
SCALE: 1 1/2"=1'-0"



10 ACCESSIBLE SINK DETAIL
SCALE: 1 1/2"=1'-0"



11 TYP. COUNTER EXT. KITCHEN
SCALE: 3/4"=1'-0"



12
SCALE: 3/4"=1'-0"

NOT USED

13
SCALE: 3/4"=1'-0"



REVISIONS
 COORDINATION 10-11-2011
 REF- 85, M1, and 155 01-20-2012

KELLER SPRINGS LOFTS
 LOFT APARTMENTS IN ADDISON, TEXAS

CONSTRUCTION ISSUE
 10-17-2011

BGO architects
 4144 N. Central Expy.
 Suite 855
 Dallas, TX 75204
 214.520.8878
 bgoarchitects.com

DATE
 08-05-2011

PROJECT
 11129
 SHEET NUMBER

2.0
 SCHEDULE

COPYRIGHT © Beeler, Guest, Owens Architects All RIGHTS RESERVED