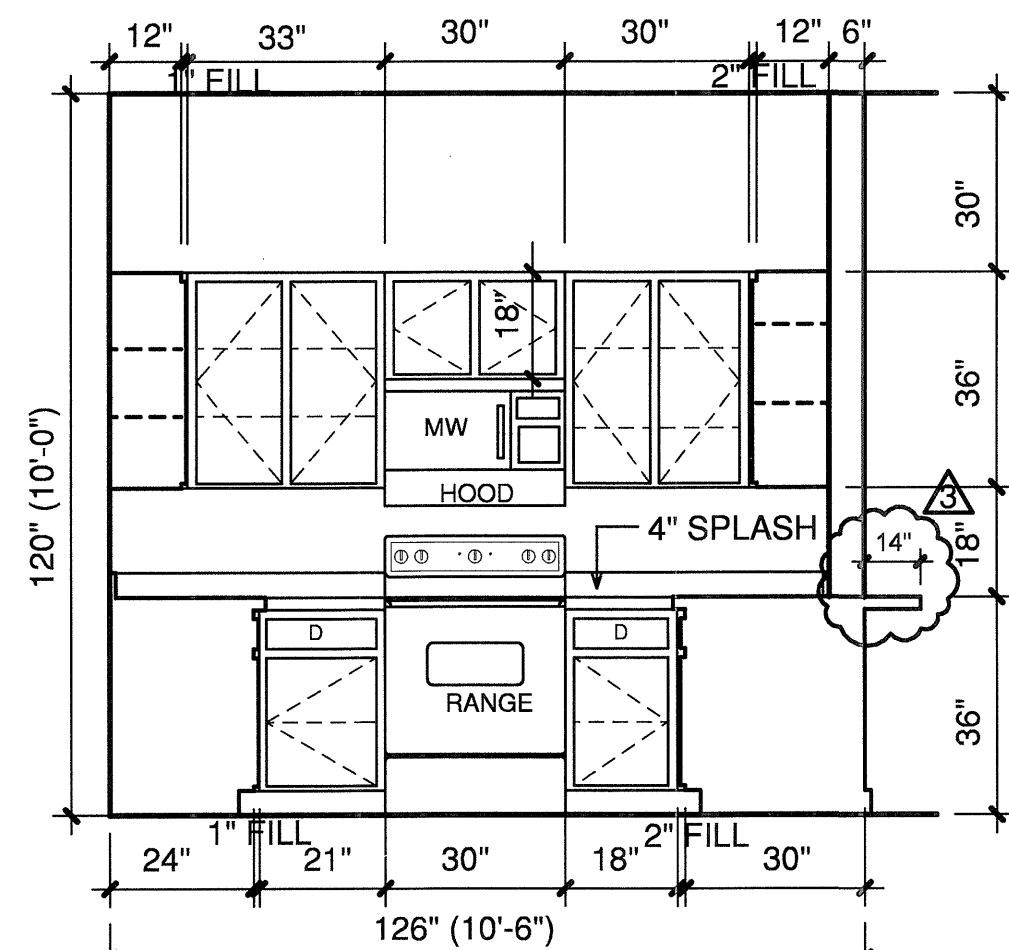
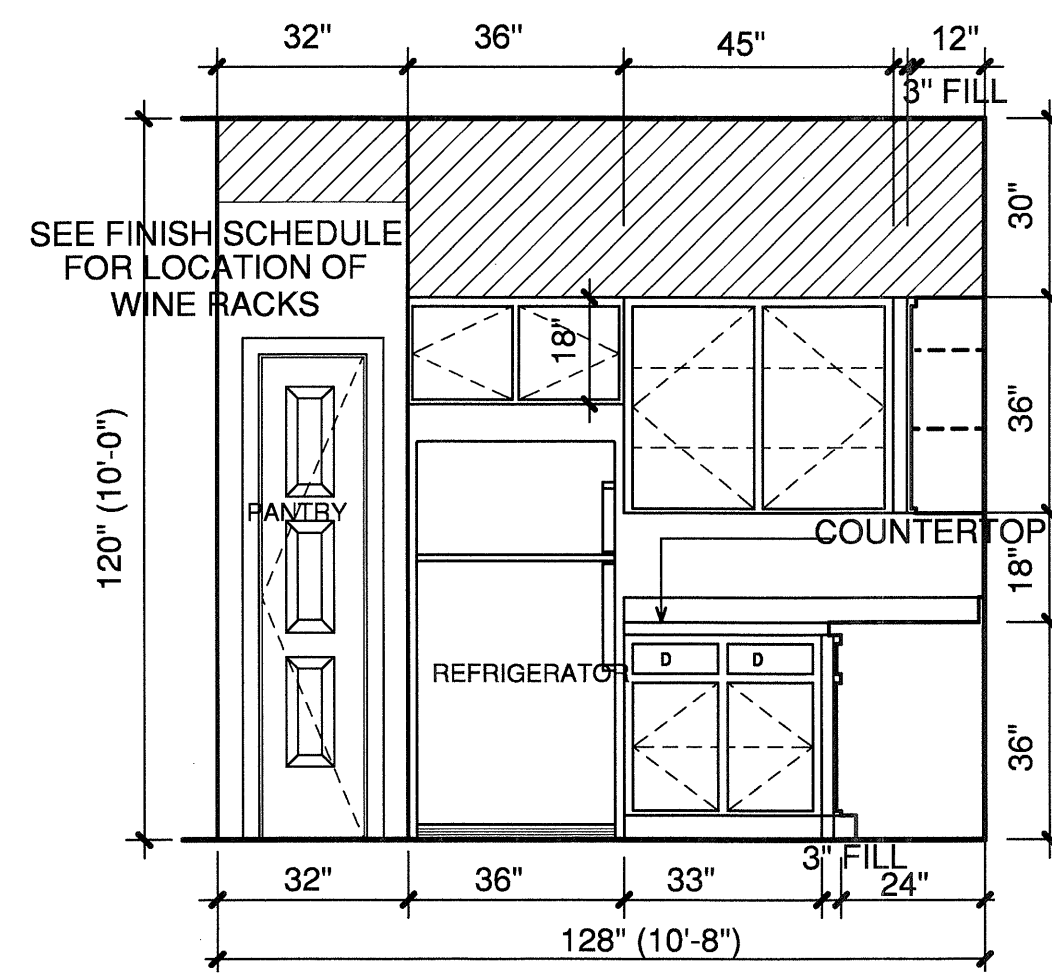


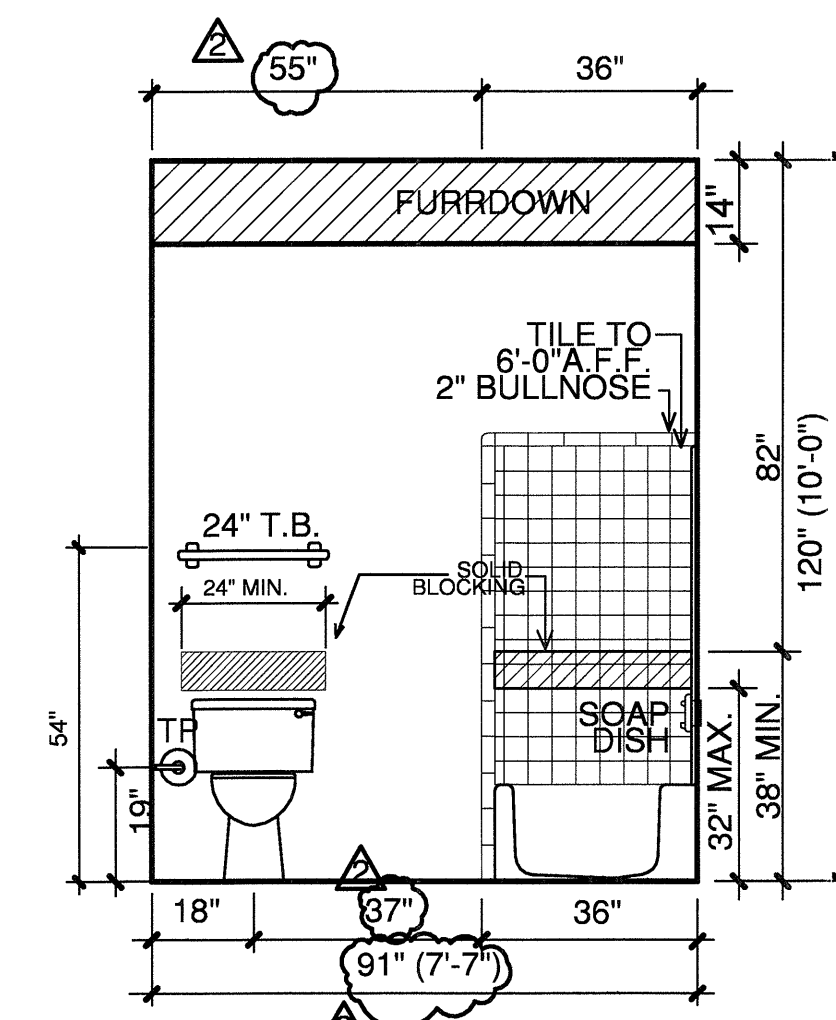
1 KITCHEN
3/8"=1'-0"



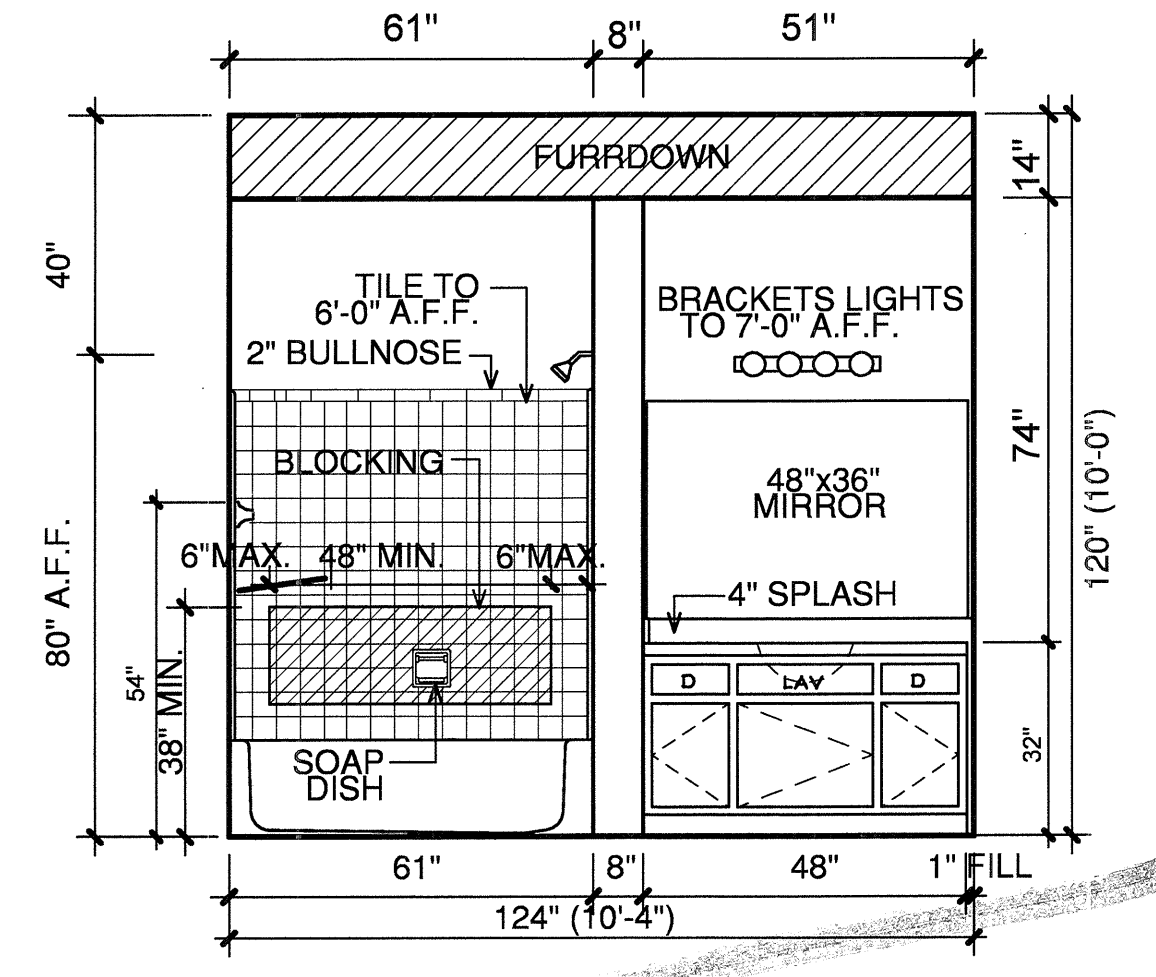
2 KITCHEN
3/8"=1'-0"



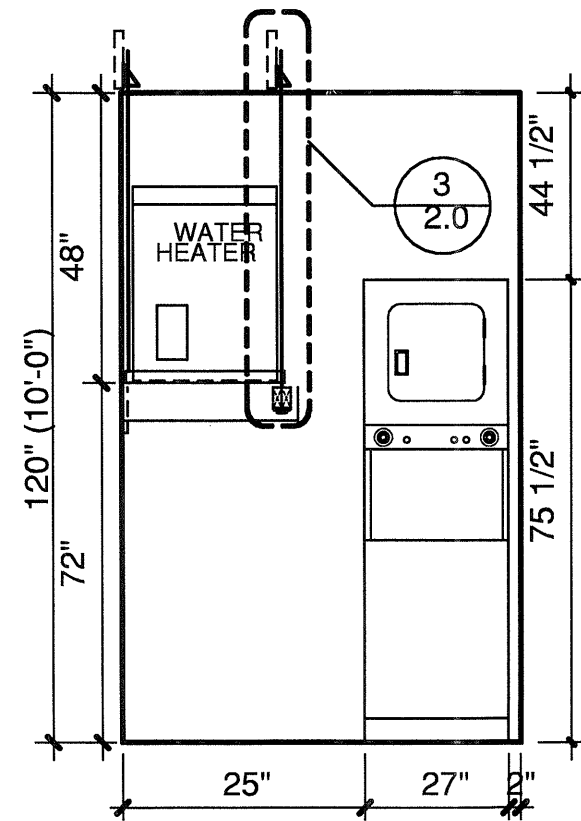
3 KITCHEN
3/8"=1'-0"



4 BATH
3/8"=1'-0"



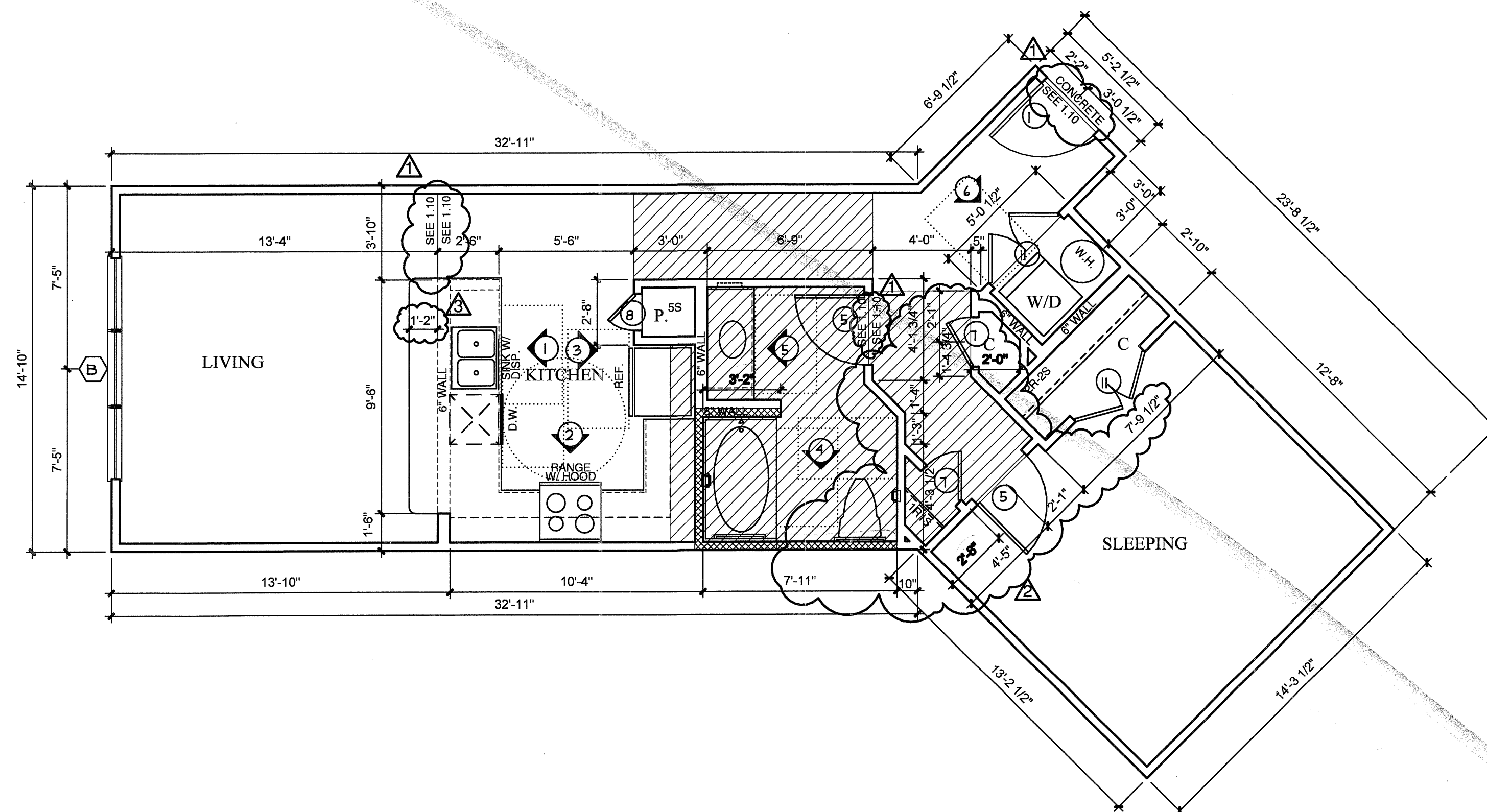
5 BATH
3/8"=1'-0"



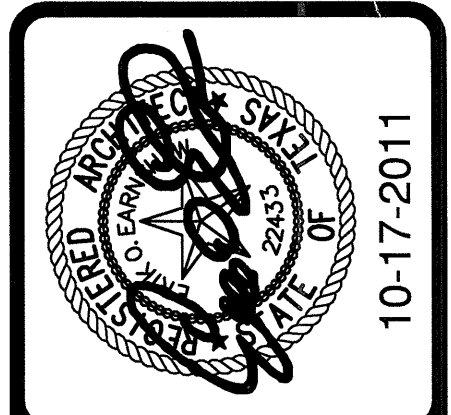
6 UTILITY
3/8"=1'-0"

NOTES:
CEILING HEIGHTS ARE 9'-0"
ON THE 2ND, 3RD, AND 4TH FLOORS.
REFERENCE SHEET 3J FOR VARYING
CEILING HEIGHTS AT FIRST FLOOR.

NOTES:
CROSSHATCHING
ON PLAN INDICATES
AREAS TO BE
SUFFICIENTLY BLOCKED
FOR GRAB BARS.
1" FURRDOWN
30"X 48"
CLEAR
FLOOR
SPACE
COORDINATE ALL
FURRDOWN LOCATIONS
WITH MECHANICAL
SHOP DRAWINGS



E1 ONE SLEEPING/ONE BATH 788 S.F.
SCALE 1/4"=1'-0" OCCURS AT: (3) TOTAL UNITS ON SITE



REVISIONS

OWNER COORDINATION	09-01-2011
ANSI/FHA COMMENTS	09-13-2011
COORDINATION	10-17-2011

KELLER SPRINGS LOFTS
LOFT APARTMENTS IN ADDISON, TEXAS

CONSTRUCTION ISSUE
10-17-2011

BGO architects
4144 N. Central Exp.
Suite 855
Dallas, TX 75204
214.520.8878
bgoarchitects.com

DATE
08-05-2011
PROJECT
11129
SHEET NUMBER

2.1
E1 UNIT

COPYRIGHT © Beeler Owens Architects ALL RIGHTS RESERVED