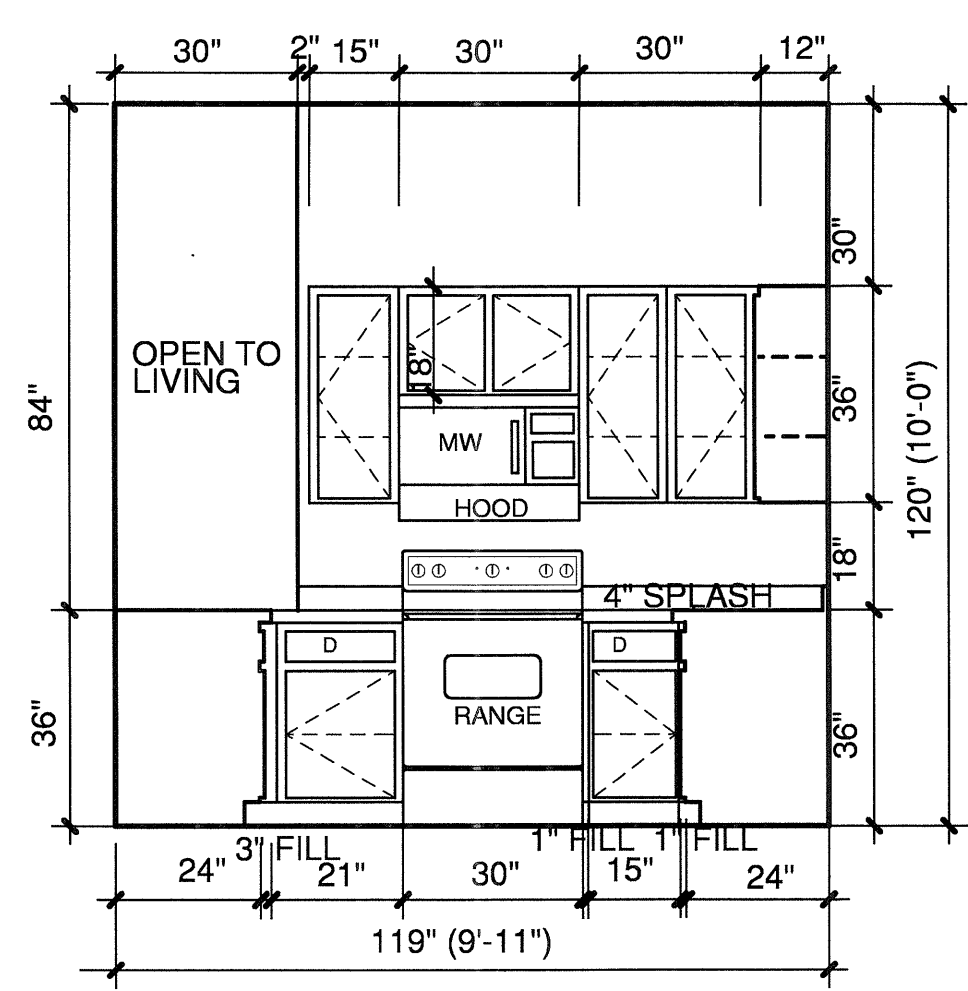


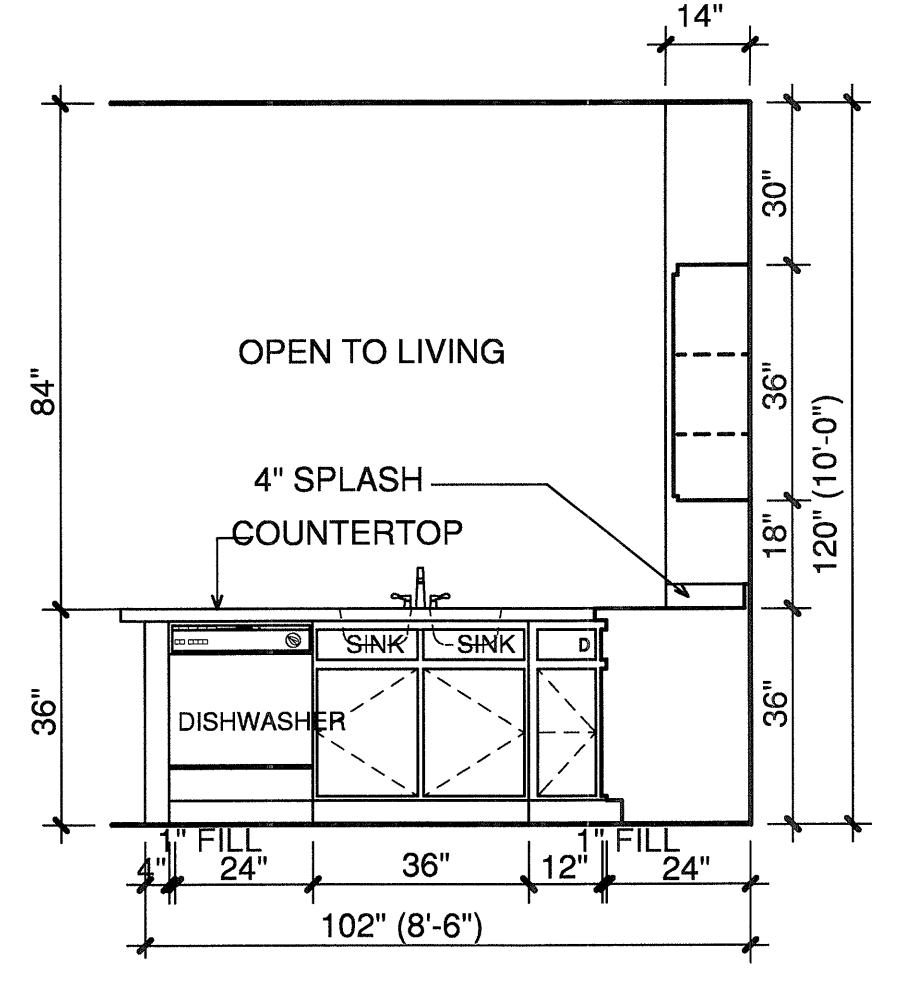
10-17-2011

REVISIONS

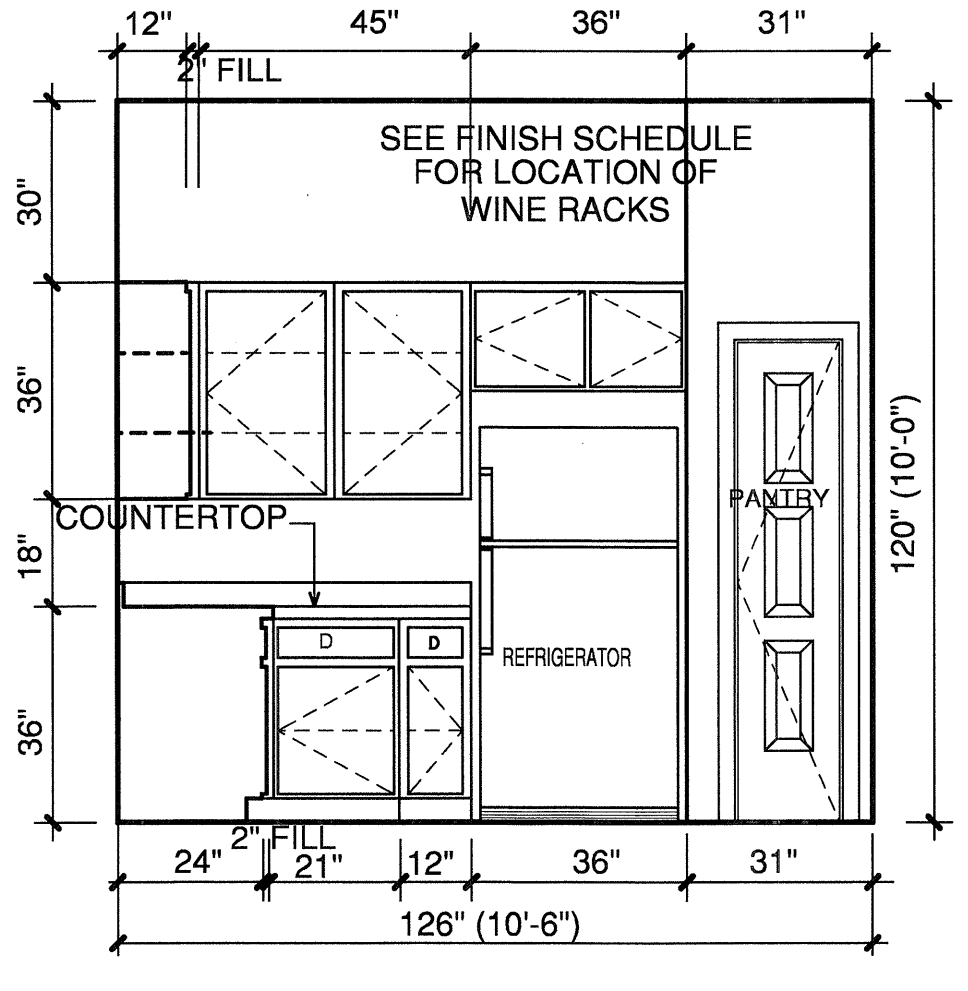
NO.	DATE	DESCRIPTION



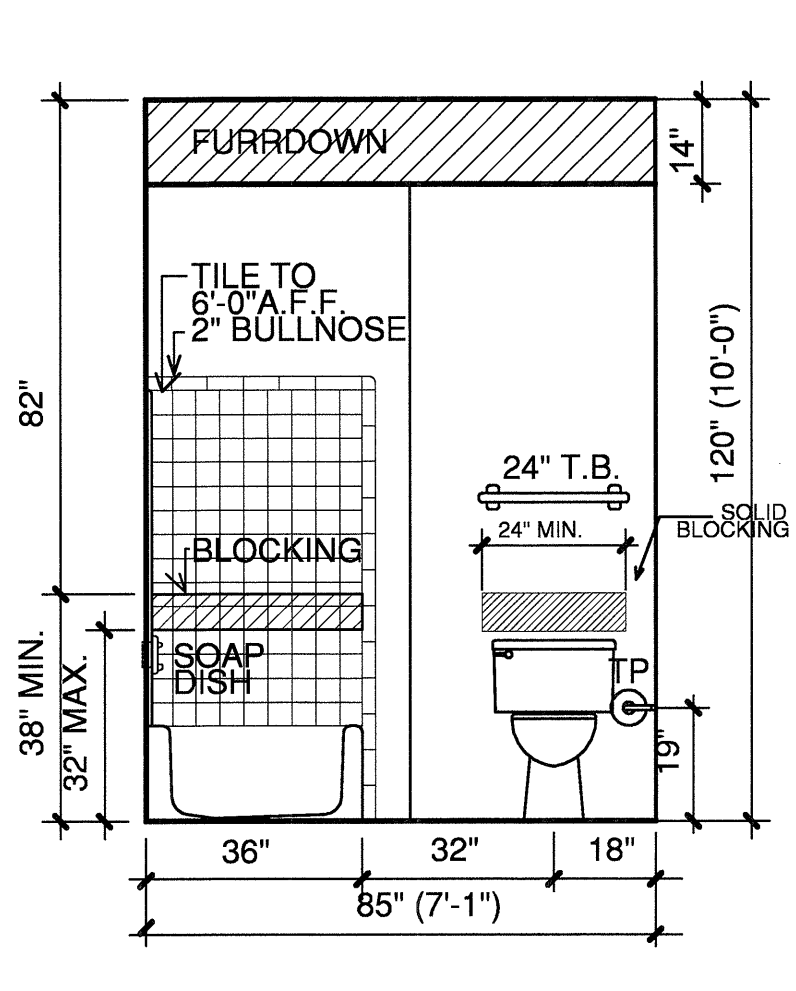
**1 KITCHEN**  
3/8"=1'-0"



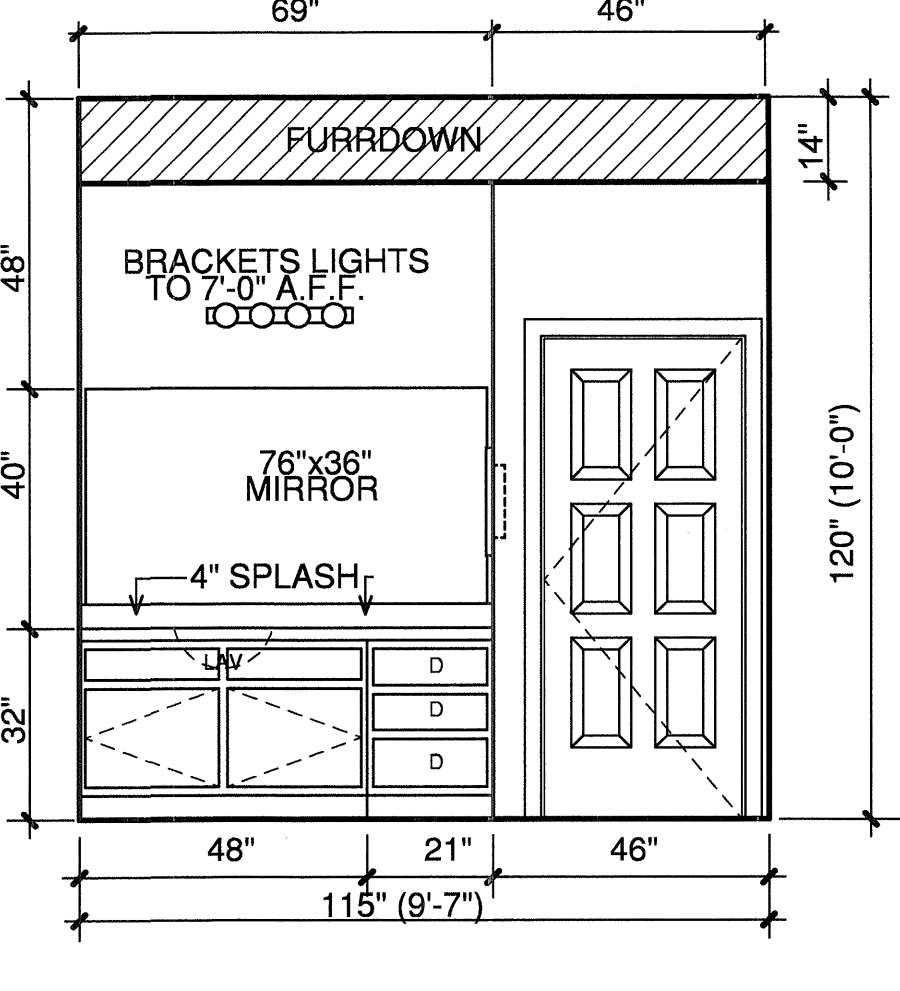
**2 KITCHEN**  
3/8"=1'-0"



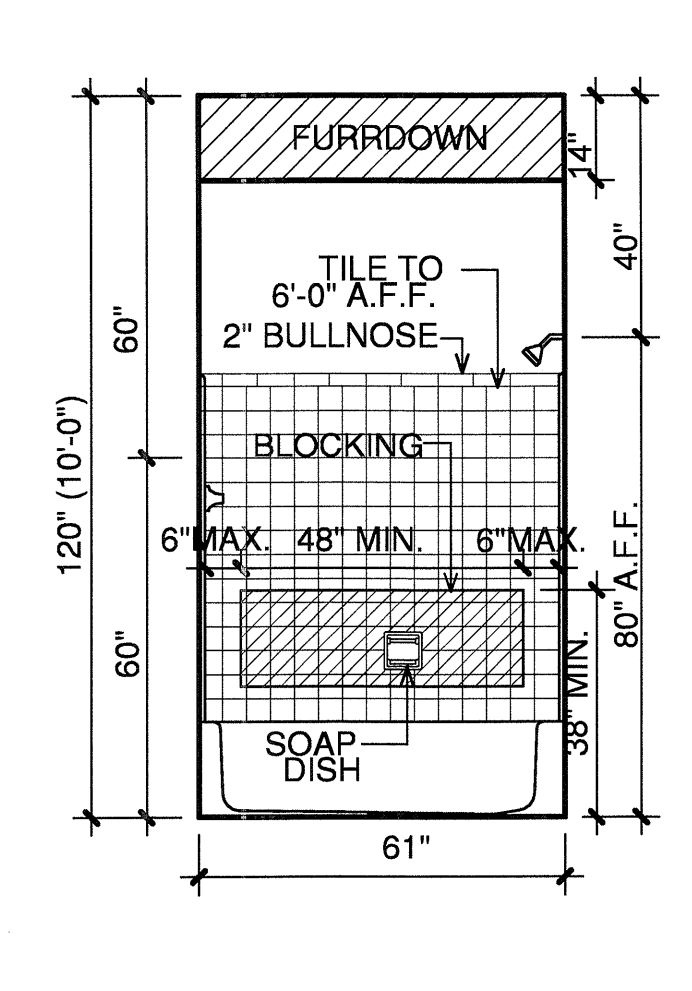
**3 KITCHEN**  
3/8"=1'-0"



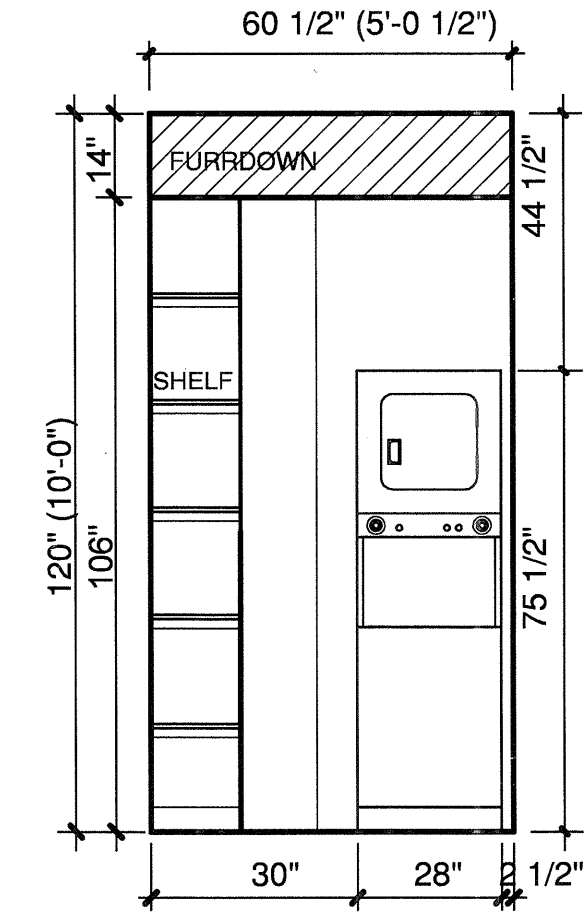
**4 BATH**  
3/8"=1'-0"



**5 BATH**  
3/8"=1'-0"



**6 BATH**  
3/8"=1'-0"

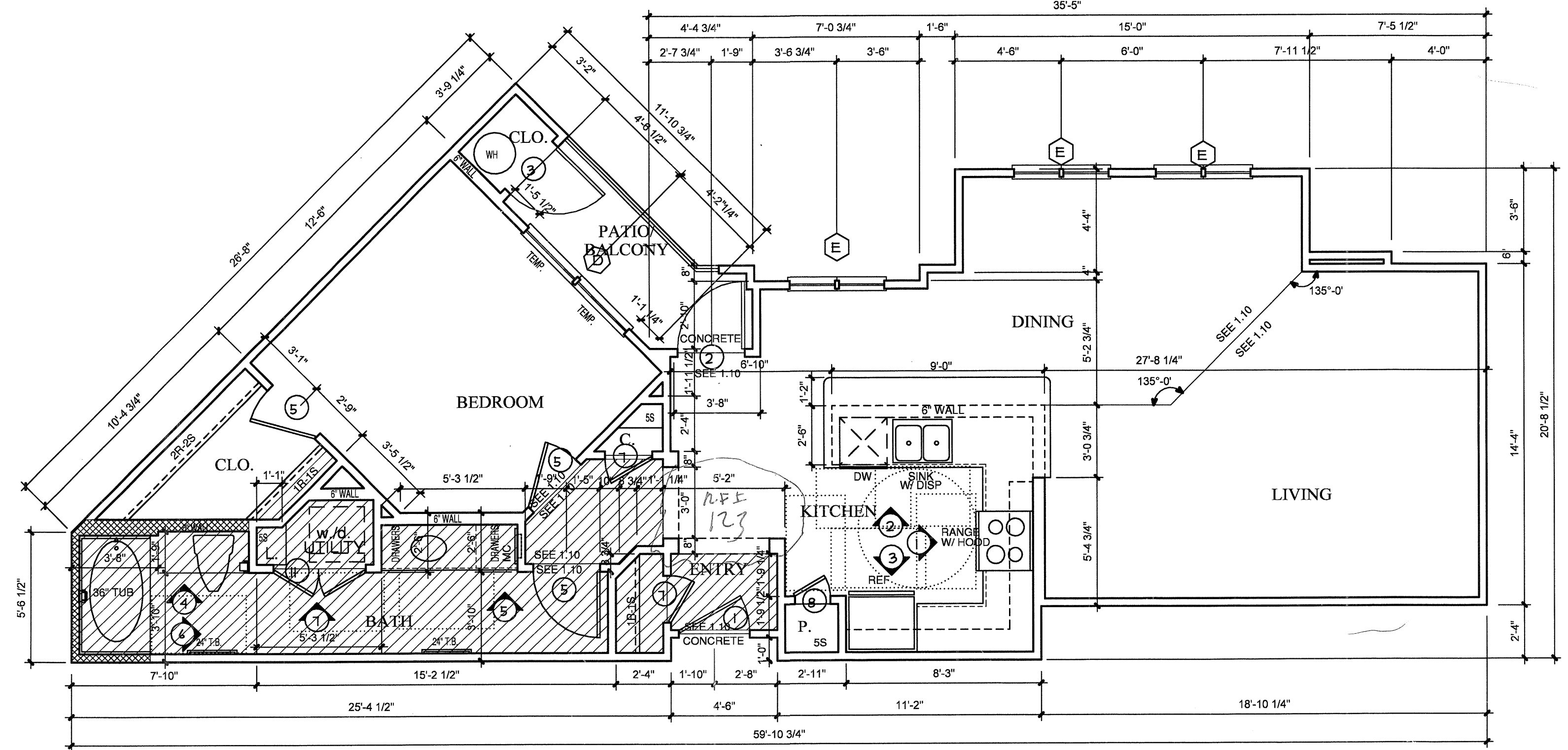


**7 UTILITY**  
3/8"=1'-0"

NOTES:  
 CEILING HEIGHTS ARE 9'-0"  
 ON THE 2ND, 3RD, AND 4TH FLOORS.  
 REFERENCE SHEET 3J FOR VARYING  
 CEILING HEIGHTS AT FIRST FLOOR.

NOTES:  
 CROSSHATCHING ON PLAN INDICATES AREAS TO BE SUFFICIENTLY REINFORCED FOR GRAB BARS.  
 1" FURRODOWN  
 30" X 48" CLEAR FLOOR SPACE

COORDINATE ALL FURRODOWN LOCATIONS WITH MECHANICAL SHOP DRAWINGS



**A2-SP ONE BEDROOM/ONE BATH**  
SCALE 1/4"=1'-0"

951 S.F.

OCCURS AT: (3) TOTAL UNITS ON SITE

**KELLER SPRINGS LOFTS**  
LOFT APARTMENTS IN ADDISON, TEXAS

CONSTRUCTION ISSUE  
10-17-2011



4144 N. Central Expy.  
Suite 855  
Dallas, TX 75204  
214.520.8878  
bgoarchitects.com

DATE  
08-05-2011

PROJECT  
11129

SHEET NUMBER

**2.3A**

**A2-SP UNIT**

COPYRIGHT © Beeler Guest Owens Architects ALL RIGHTS RESERVED