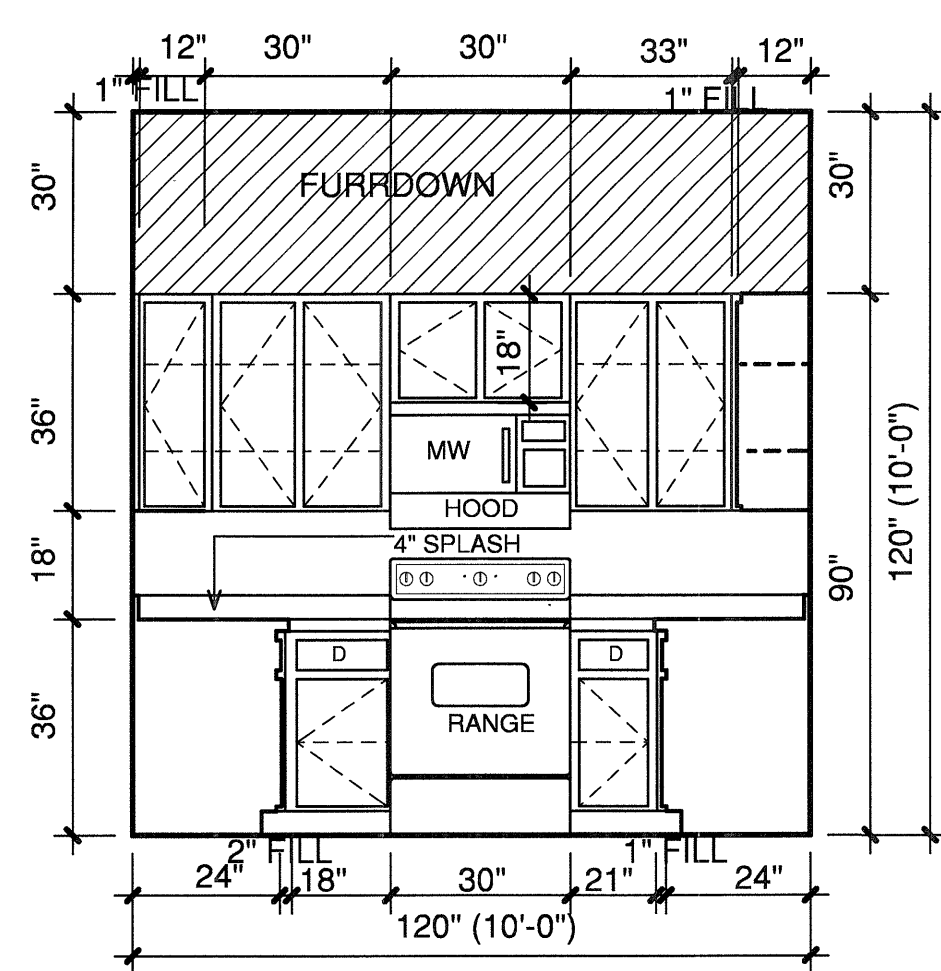
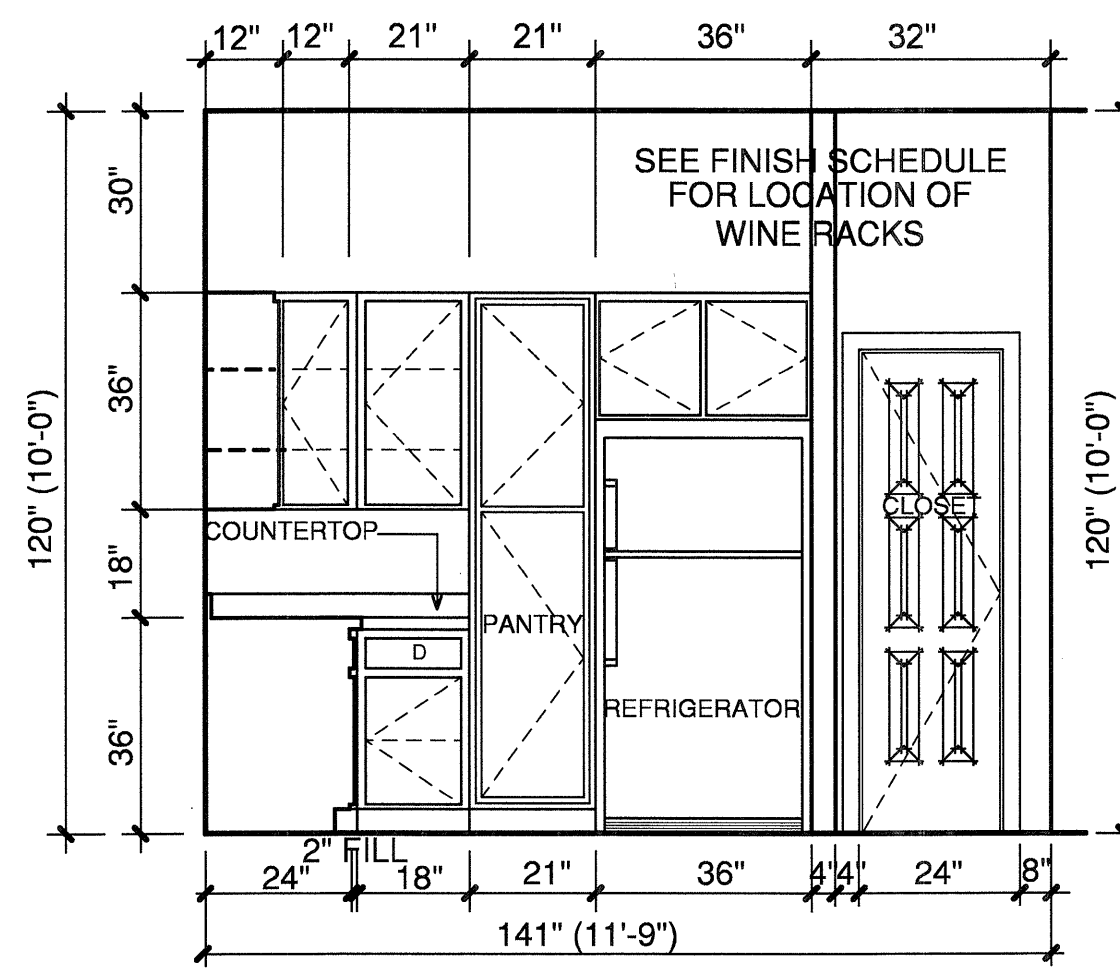


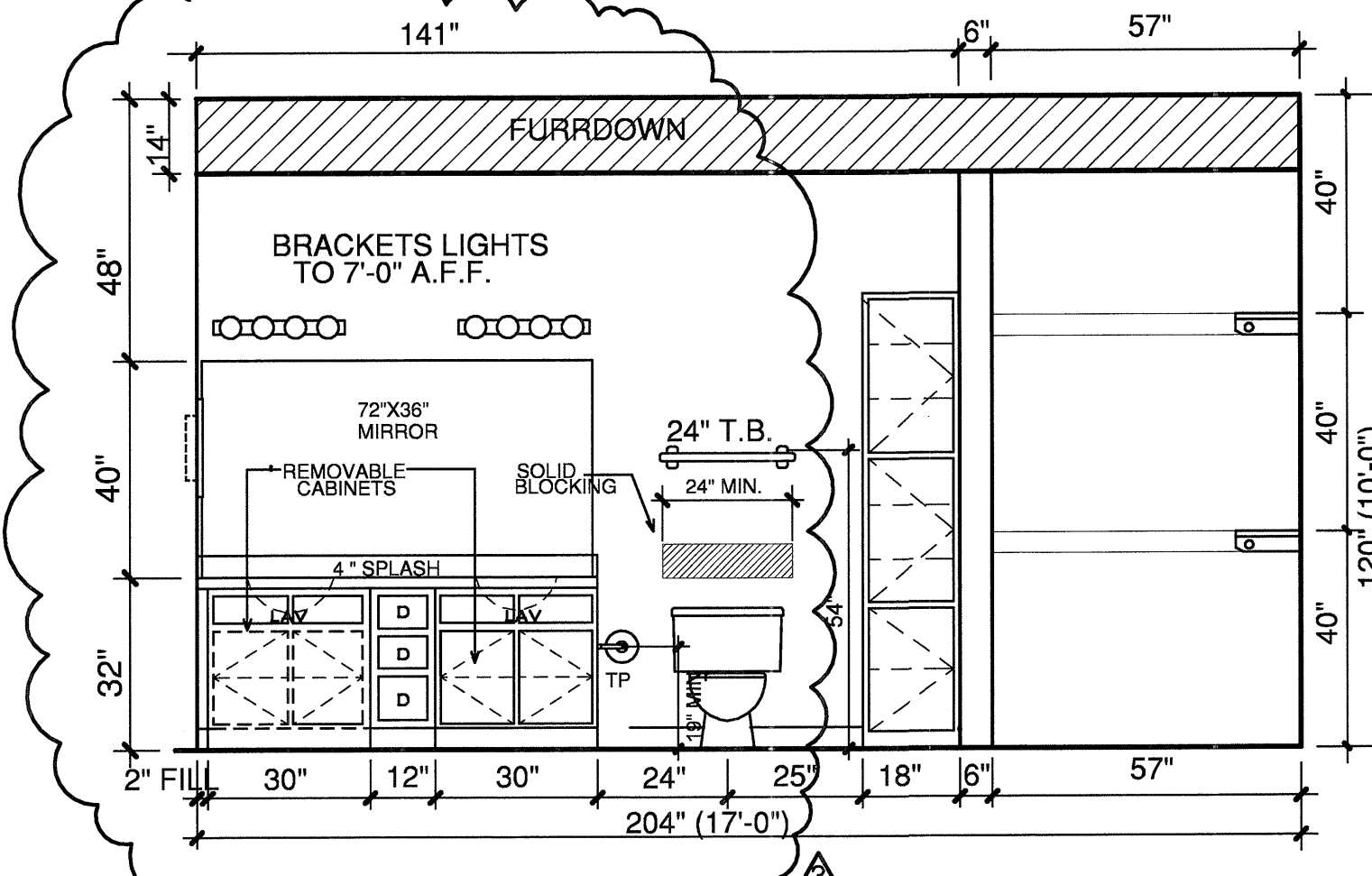
**1 KITCHEN**  
3/8"=1'-0"



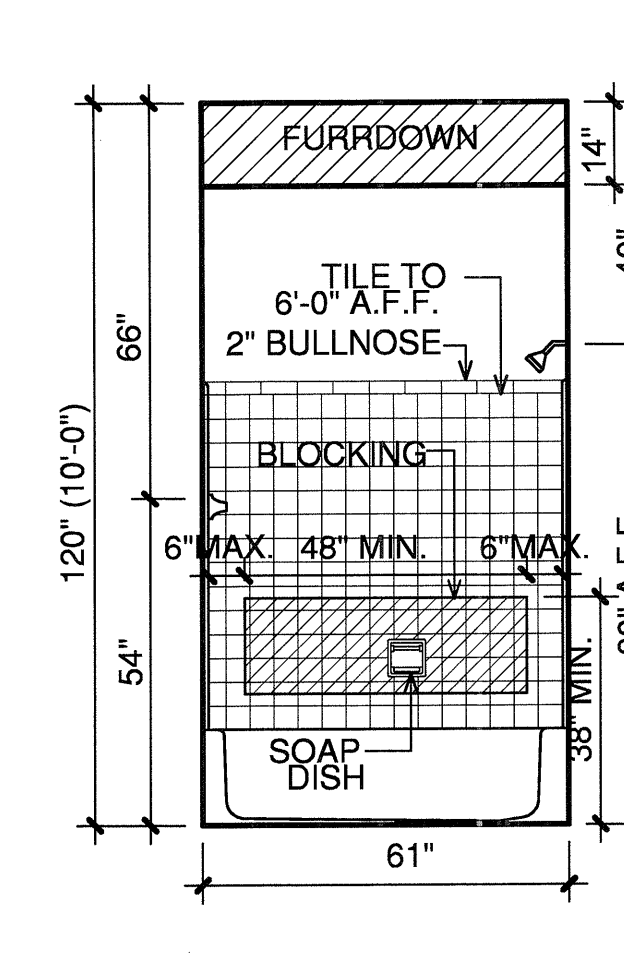
**2 KITCHEN**  
3/8"=1'-0"



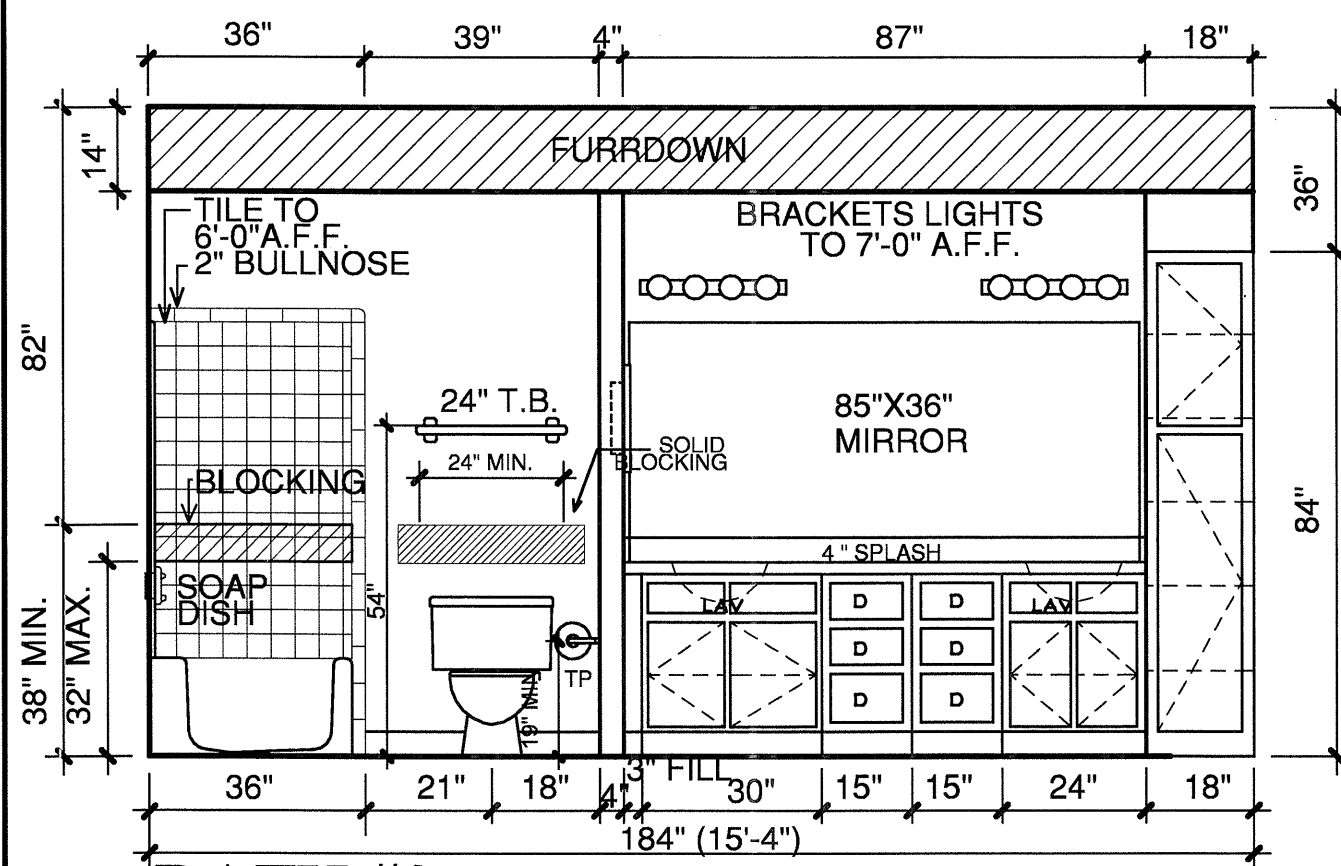
**3 KITCHEN**  
3/8"=1'-0"



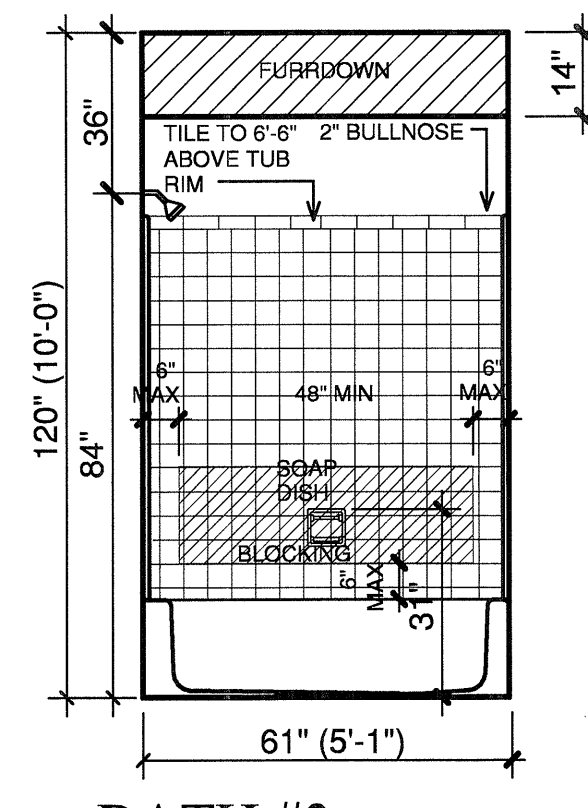
**4 BATH #1**  
3/8"=1'-0"



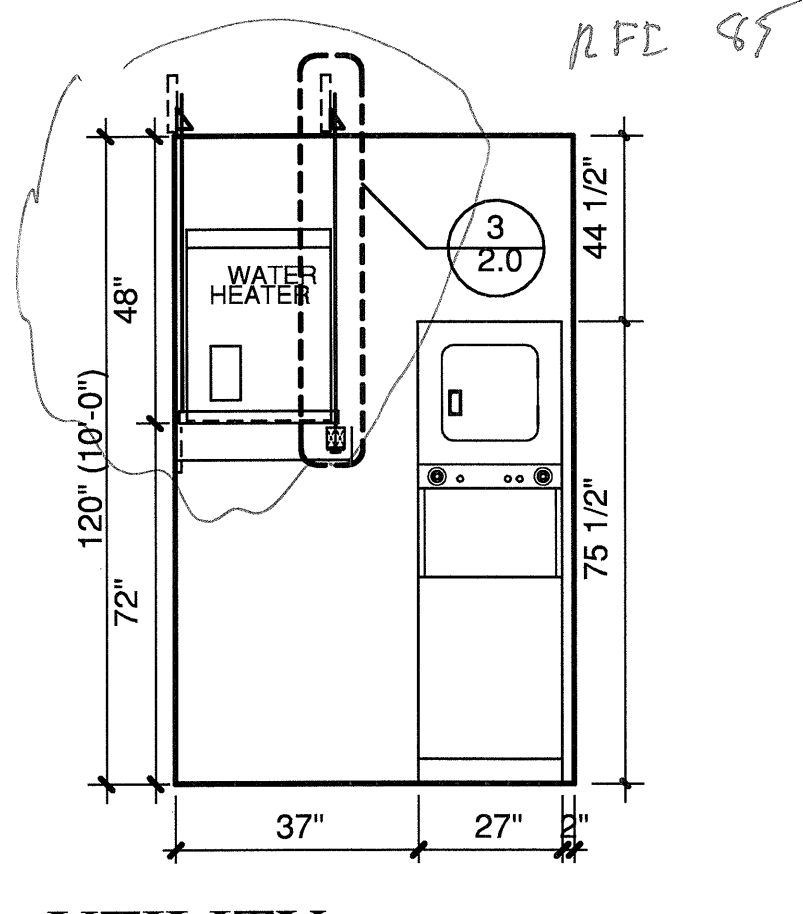
**5 BATH #1**  
3/8"=1'-0"



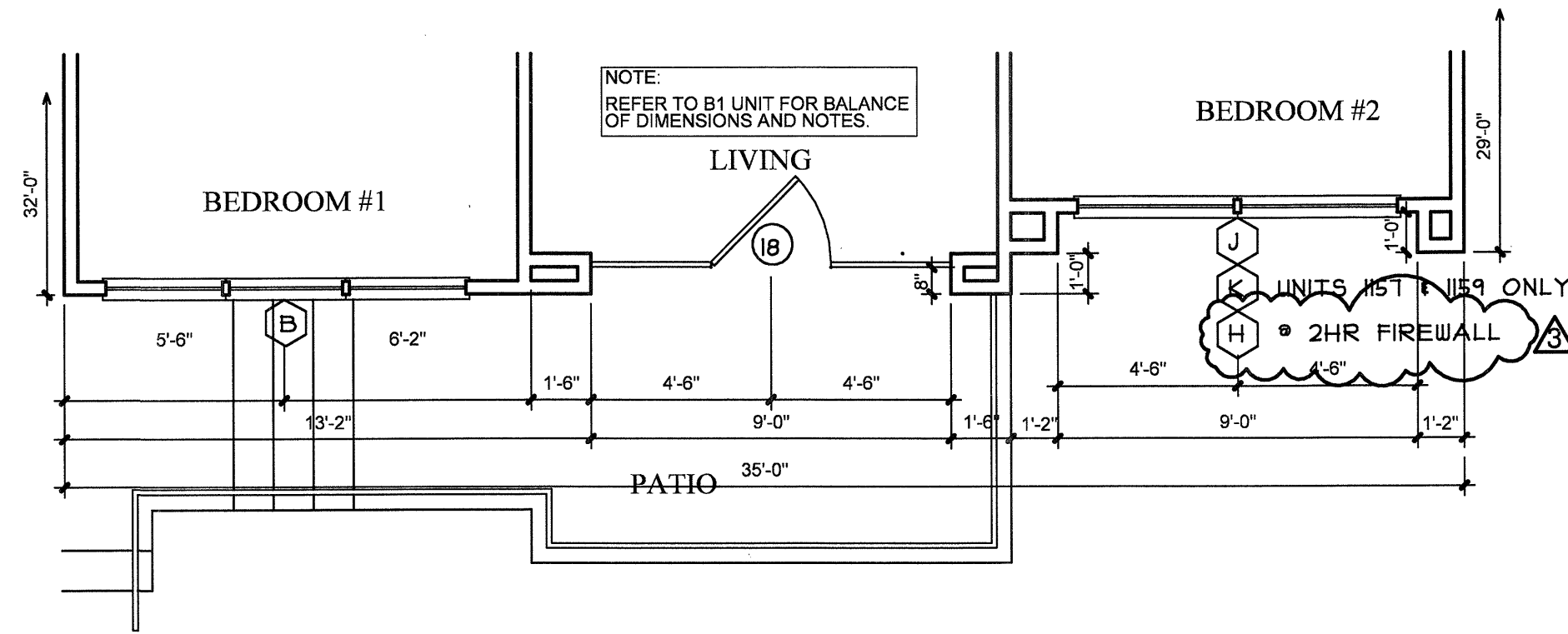
**6 BATH #2**  
3/8"=1'-0"



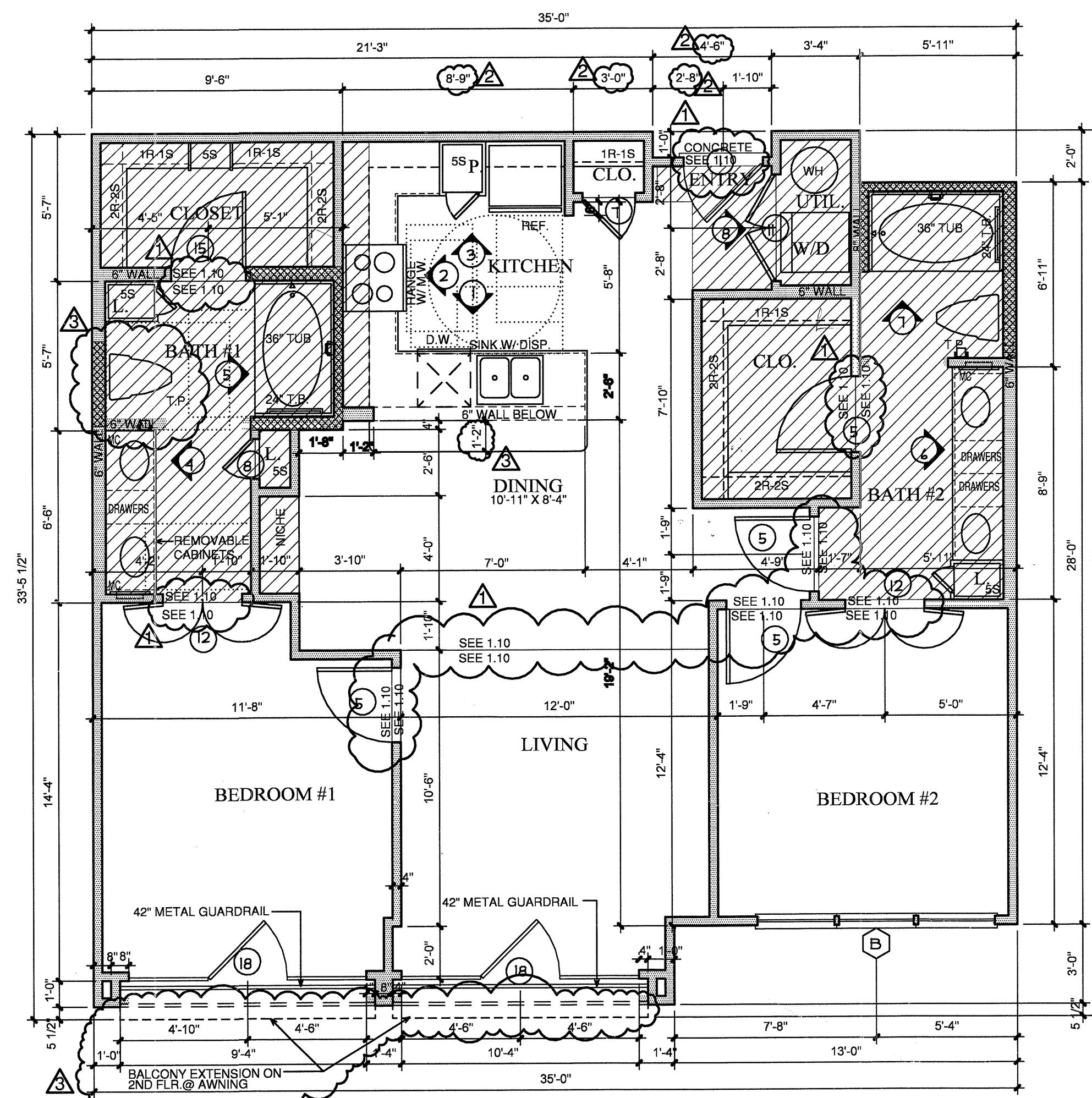
**7 BATH #2**  
SCALE 3/8"=1'-0"



**8 UTILITY**  
3/8"=1'-0"



**10 PARTIAL 2**  
SCALE 1/4"=1'-0" 1,081 S.F.  
OCCURS AT: (5) TOTAL UNITS ON SITE



**B1 TWO BEDROOM/TWO BATH (PARTIAL 1) 1,081 S.F.**  
SCALE 1/4"=1'-0" OCCURS AT: (3) TOTAL UNITS ON SITE

NOTES:  
CEILING HEIGHTS ARE 9'-0" ON THE 2ND, 3RD, AND 4TH FLOORS. REFERENCE SHEET 3J FOR VARYING CEILING HEIGHTS AT FIRST FLOOR.

NOTES:  
CROSSHATCHING ON PLAN INDICATES AREAS TO BE SURFICED & BLOCKED FOR GRAB BARS.  
1" FURRDOWN  
30" X 48" CLEAR FLOOR SPACE

COORDINATE ALL FURRDOWN LOCATIONS WITH MECHANICAL SHOP DRAWINGS



REVISIONS  
OWNER COORDINATION 09-01-2011  
ANSI/FHA COMMENTS 09-13-2011  
COORDINATION 10-17-2011

**KELLER SPRINGS LOFTS**  
LOFT APARTMENTS IN ADDISON, TEXAS

CONSTRUCTION ISSUE  
10-17-2011

**BGO architects**  
4144 N. Central Expy. Suite 855  
Dallas, TX 75204  
214.520.8878  
bgoarchitects.com

DATE  
08-05-2011

PROJECT  
11129

SHEET NUMBER

**2.6**  
B1 UNIT

COPYRIGHT © Beeler Owens Architects ALL RIGHTS RESERVED