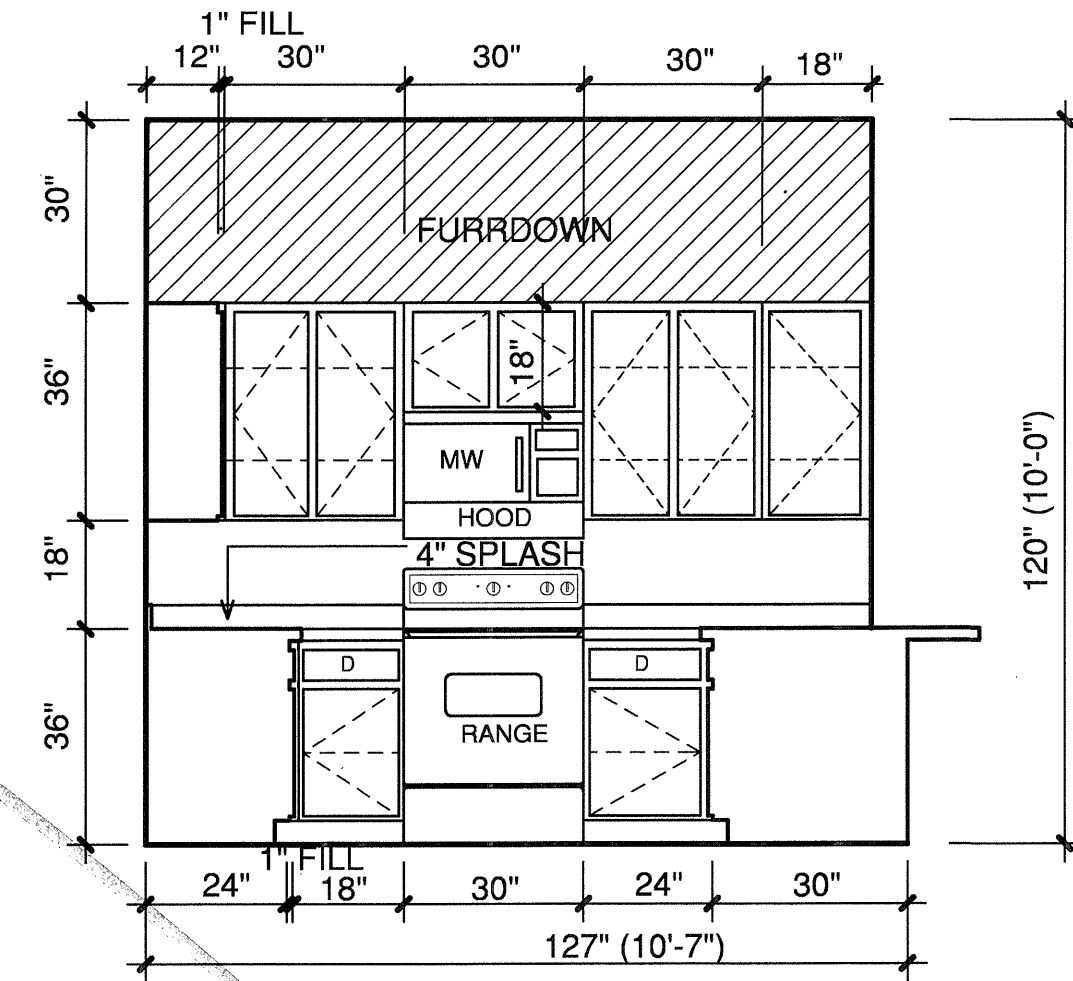
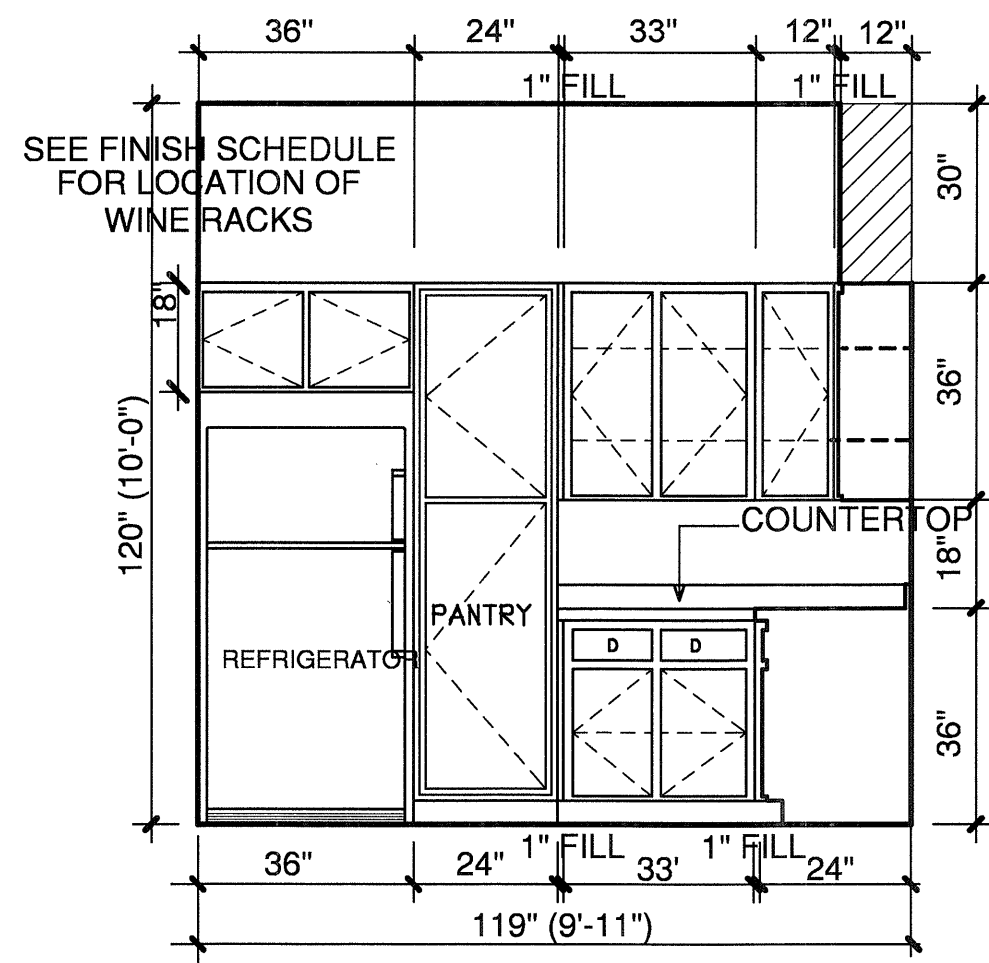


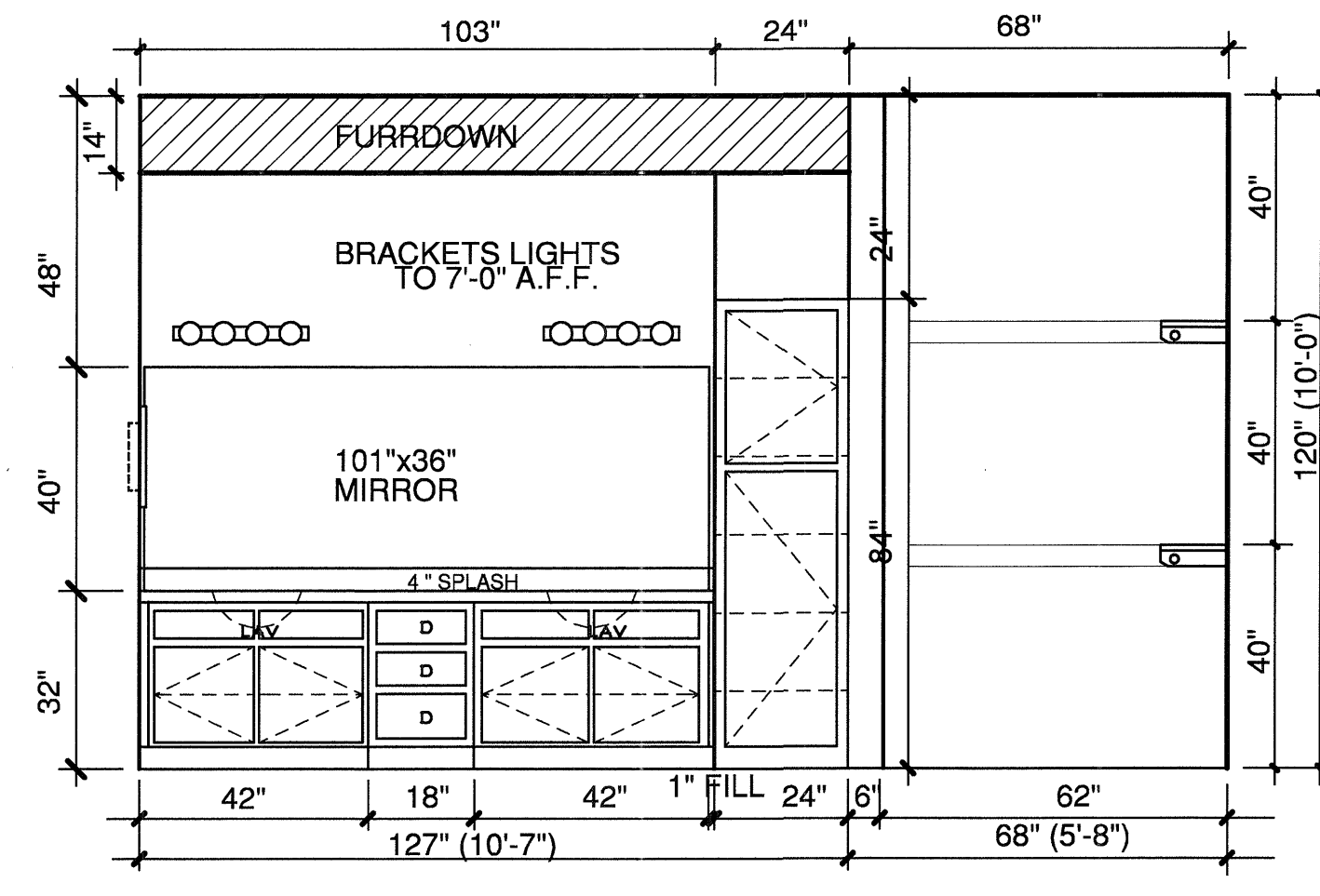
**1 KITCHEN**  
3/8"=1'-0"



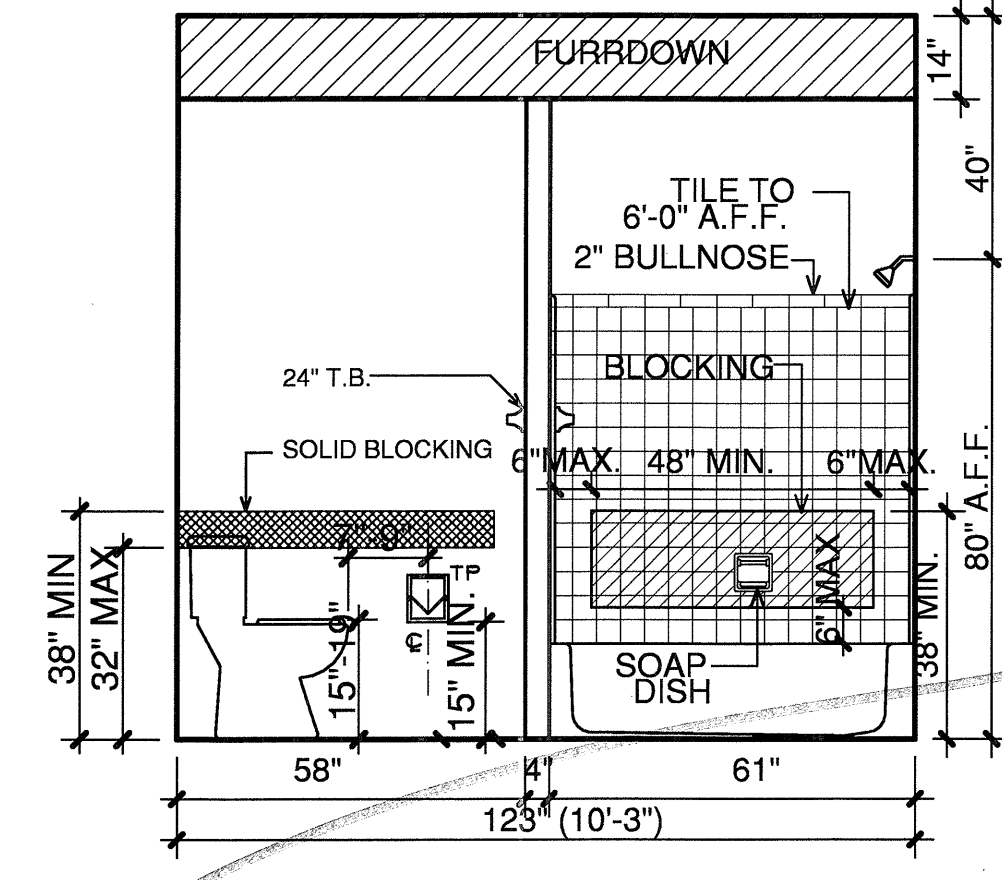
**2 KITCHEN**  
3/8"=1'-0"



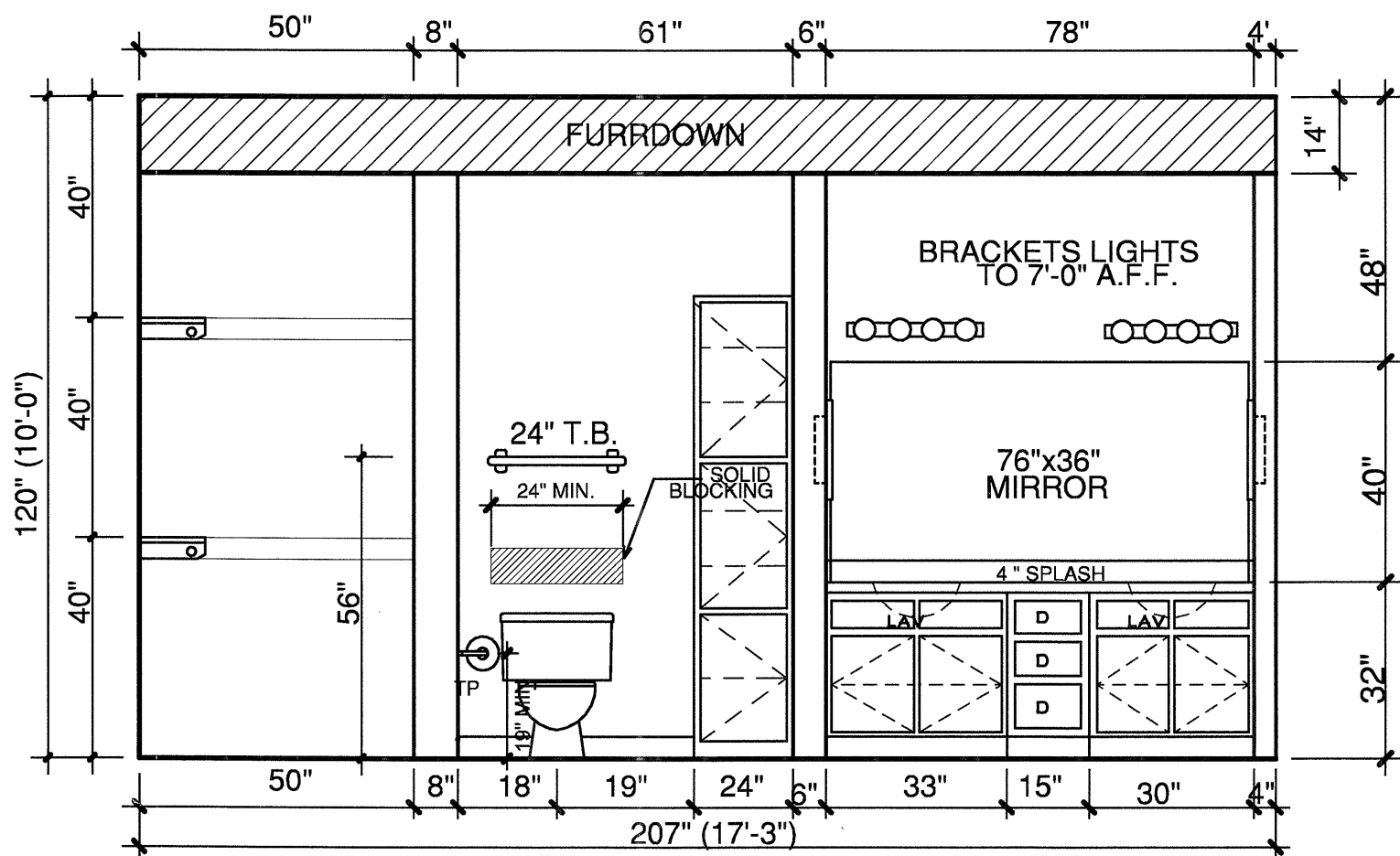
**3 KITCHEN**  
3/8"=1'-0"



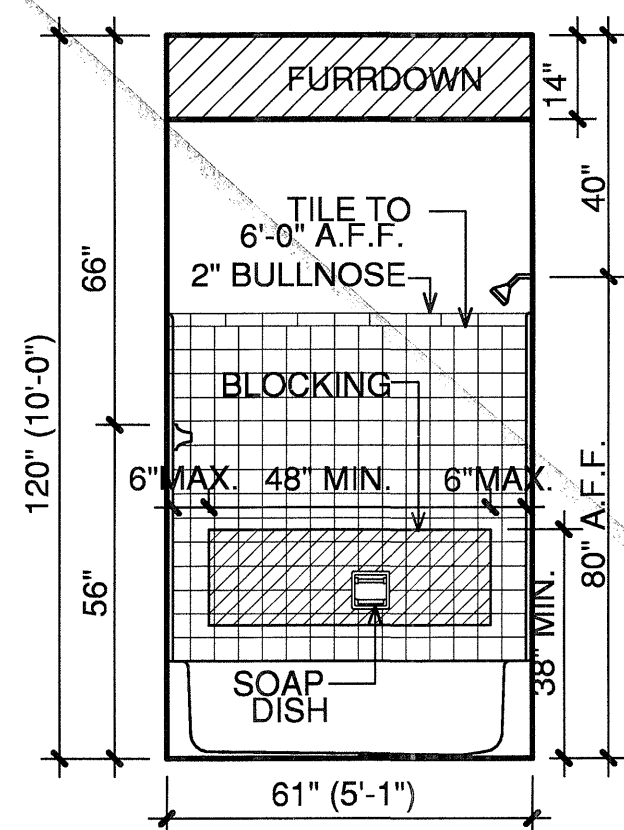
**4 BATH #1**  
3/8"=1'-0"



**5 BATH #1**  
3/8"=1'-0"



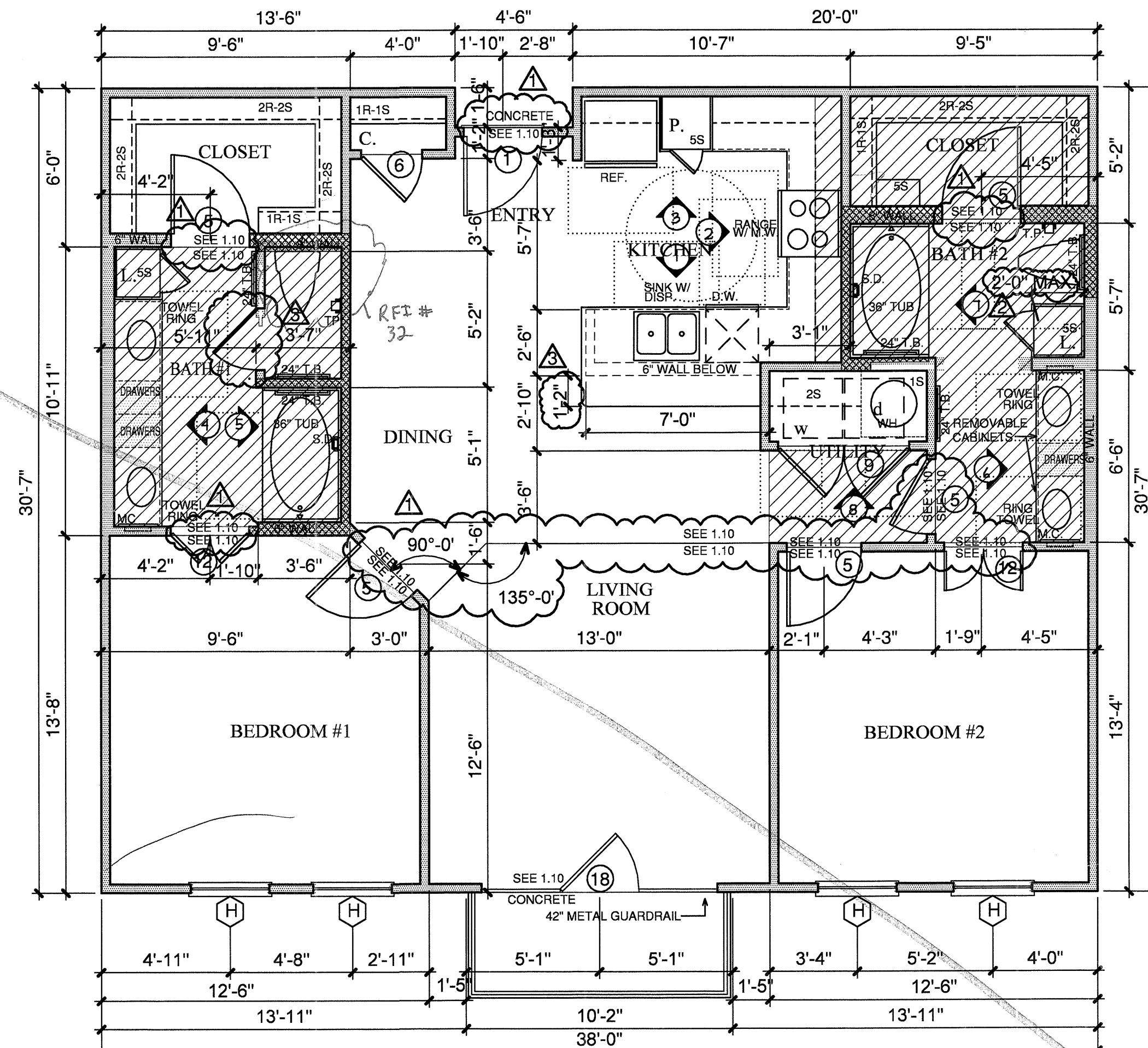
**6 BATH #2**  
3/8"=1'-0"



**7 BATH #2**  
3/8"=1'-0"

NOTES:  
CEILING HEIGHTS ARE 9'-0"  
ON THE 2ND, 3RD, AND 4TH FLOORS.  
REFERENCE SHEET 3.1 FOR VARYING  
CEILING HEIGHTS AT FIRST FLOOR.

NOTES:  
CROSSHATCHING  
ON PLAN INDICATES  
AREAS TO BE  
SUFFICIENTLY BLOCKED  
FOR GRAB BARS.  
H<sup>1</sup> FURRDOWN  
30" X 48"  
CLEAR  
FLOOR  
SPACE  
COORDINATE ALL  
FURRDOWN LOCATIONS  
WITH MECHANICAL  
SHOP DRAWINGS



**B2 TWO BEDROOM/TWO BATH** 1,155 S.F.  
SCALE 1/4"=1'-0" OCCURS AT: (3) TOTAL UNITS ON SITE



10-17-2011

REVISIONS  
OWNER COORDINATION 09-01-2011  
ANSI/FHA COMMENTS 09-13-2011  
ANSI/FHA COMMENTS 09-13-2011

**KELLER SPRINGS LOFTS**  
LOFT APARTMENTS IN ADDISON, TEXAS

CONSTRUCTION ISSUE  
10-17-2011

**BGO architects**  
4144 N. Central Expy.  
Suite 855  
Dallas, TX 75204  
214.520.8878  
bgoarchitects.com

DATE  
08-05-2011

PROJECT  
11129

SHEET NUMBER

**2.7**  
B2 UNIT

COPYRIGHT © Beeler Owens Architects All Rights Reserved