



REVISIONS

OWNER COORDINATION 09-01-2011

ANSI/FHA COMMENTS 09-13-2011

ANSI/FHA COMMENTS 09-13-2011

COORDINATION 04-17-2012

KELLER SPRINGS LOFTS

LOFT APARTMENTS IN ADDISON, TEXAS

CONSTRUCTION ISSUE

10-17-2011

BGO architects

4144 N. Central Expy.
Suite 855
Dallas, TX 75204
214.520.8878
bgoarchitects.com

DATE

08-05-2011

PROJECT

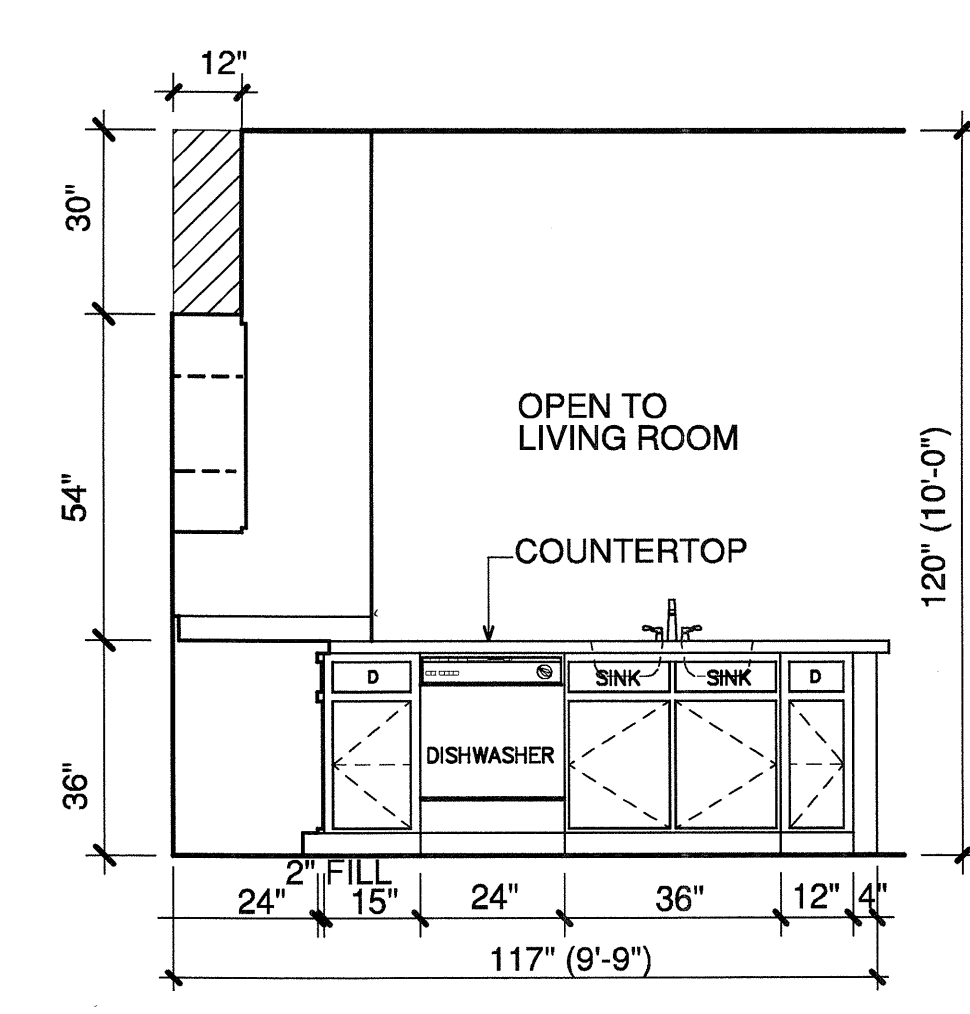
11129

SHEET NUMBER

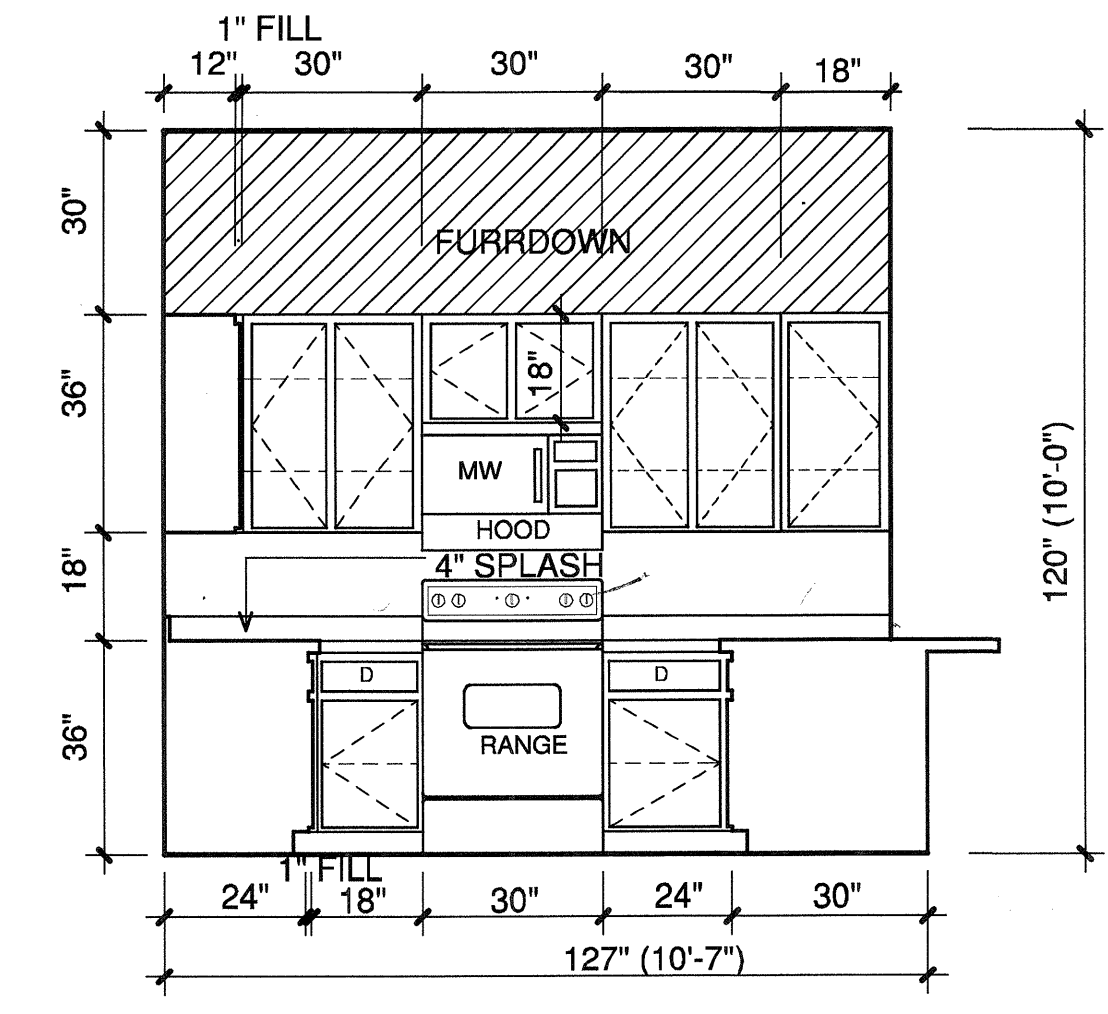
2.7

B2 UNIT

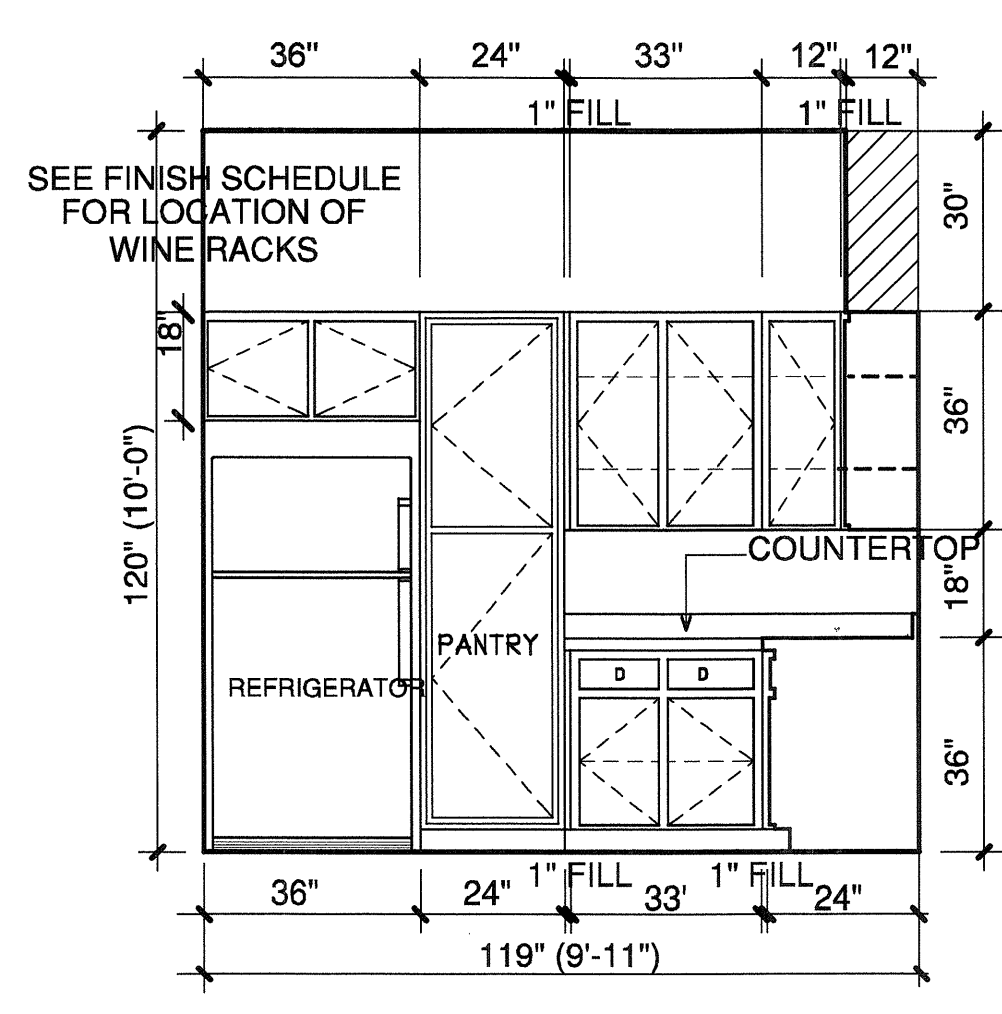
COPYRIGHT © Beeler Owens Architects ALL RIGHTS RESERVED



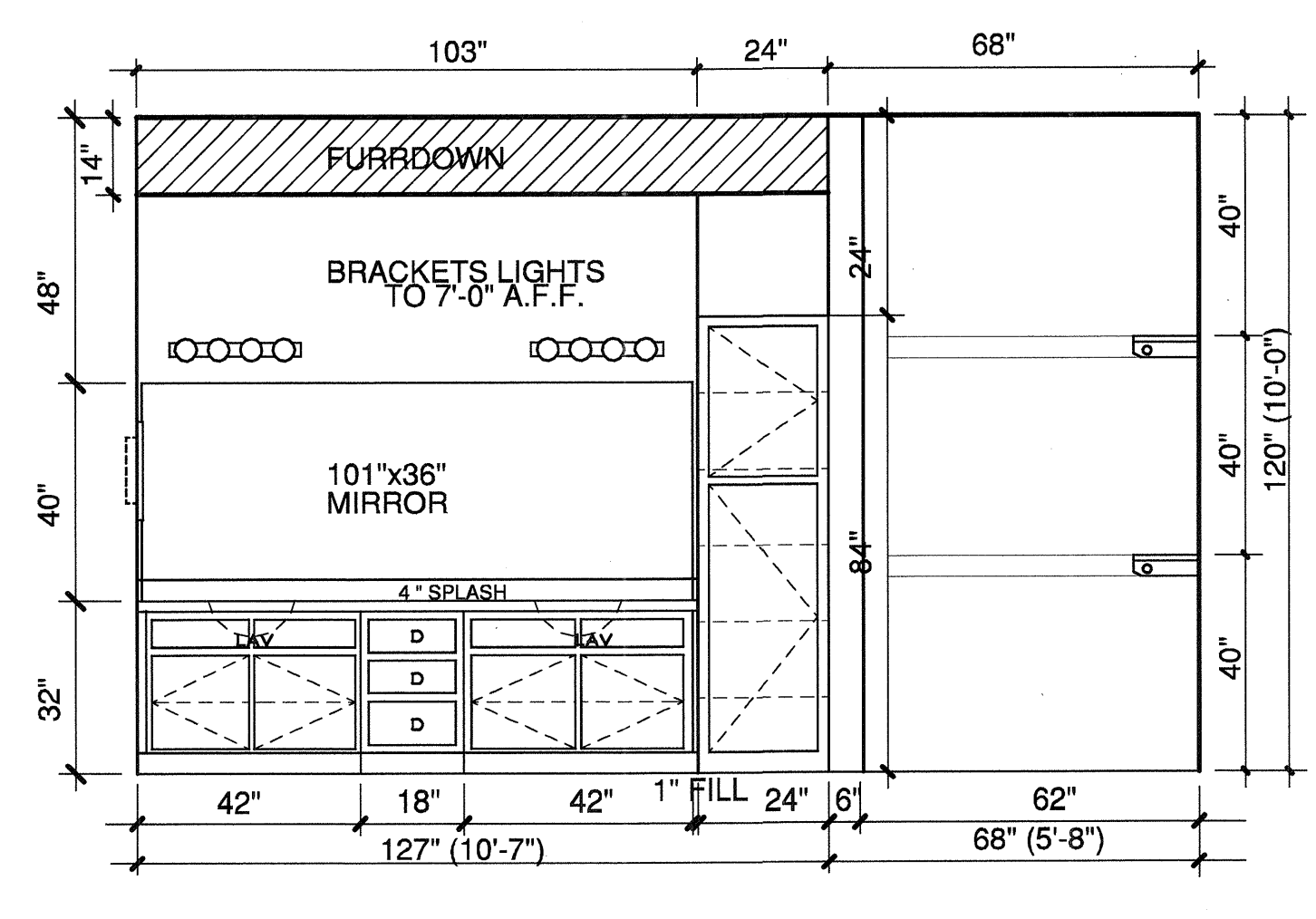
1 KITCHEN
3/8"=1'-0"



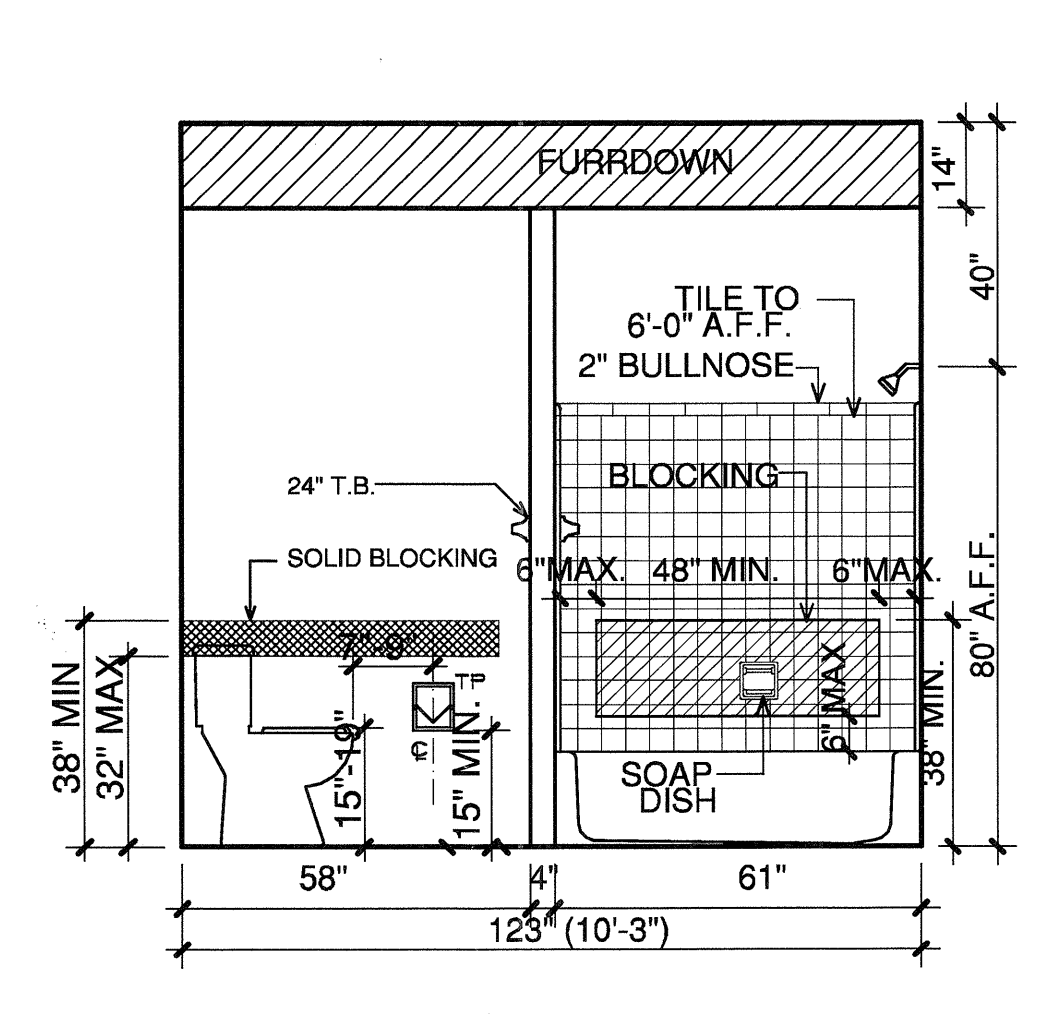
2 KITCHEN
3/8"=1'-0"



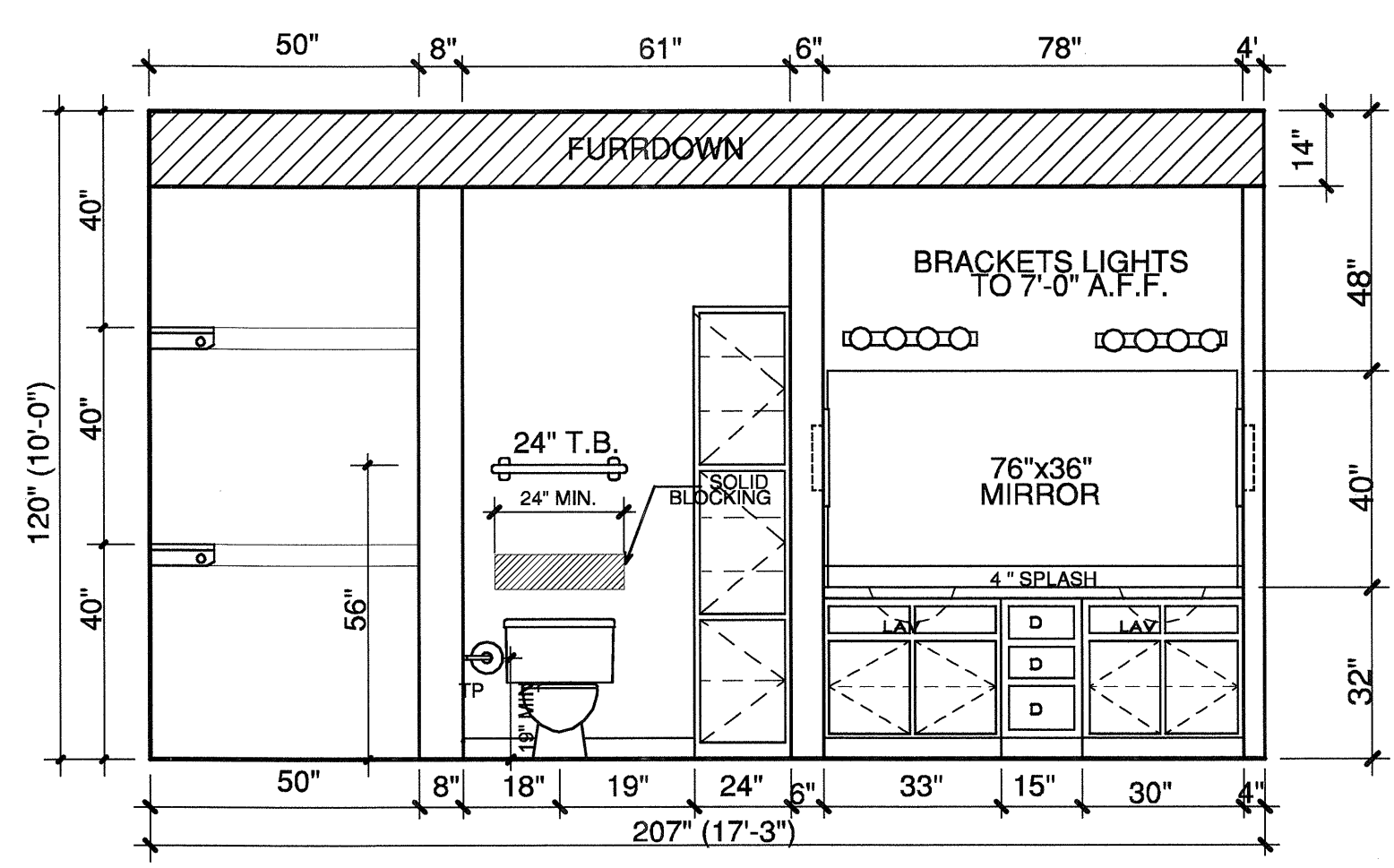
3 KITCHEN
3/8"=1'-0"



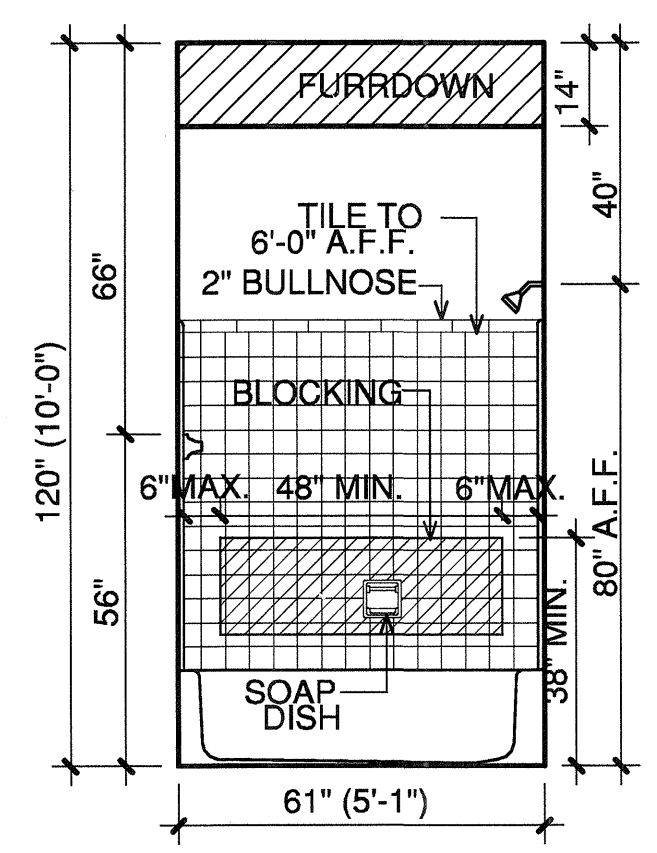
4 BATH #1
3/8"=1'-0"



5 BATH #1
3/8"=1'-0"



6 BATH #2
3/8"=1'-0"



7 BATH #2
3/8"=1'-0"

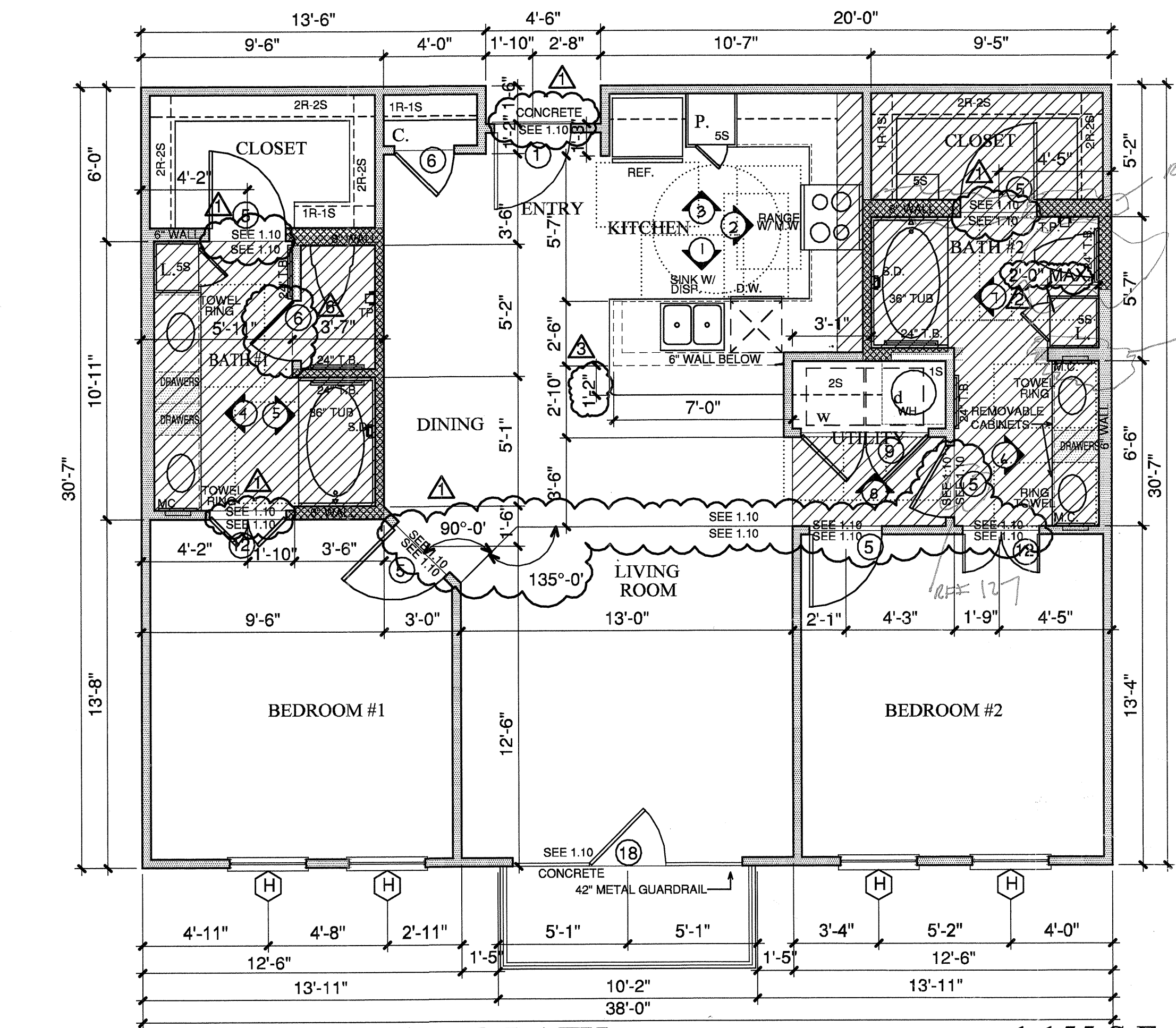
NOTES:
CEILING HEIGHTS ARE 9'-0"
ON THE 2ND, 3RD, AND 4TH FLOORS.
REFERENCE SHEET 3.I FOR VARYING
CEILING HEIGHTS AT FIRST FLOOR.

NOTES:
CROSSHATCHING ON PLAN INDICATES
AREAS TO BE
SUFFICIENTLY BLOCKED
FOR GRAB BARS.

1/4" FURRDOWN

30" X 48"
CLEAR
FLOOR
SPACE

COORDINATE ALL
FURRDOWN LOCATIONS
WITH MECHANICAL
SHOP DRAWINGS



B2 TWO BEDROOM/TWO BATH 1,155 S.F.

SCALE 1/4"=1'-0" OCCURS AT: (3) TOTAL UNITS ON SITE

COPYRIGHT © Beeler Owens Architects ALL RIGHTS RESERVED