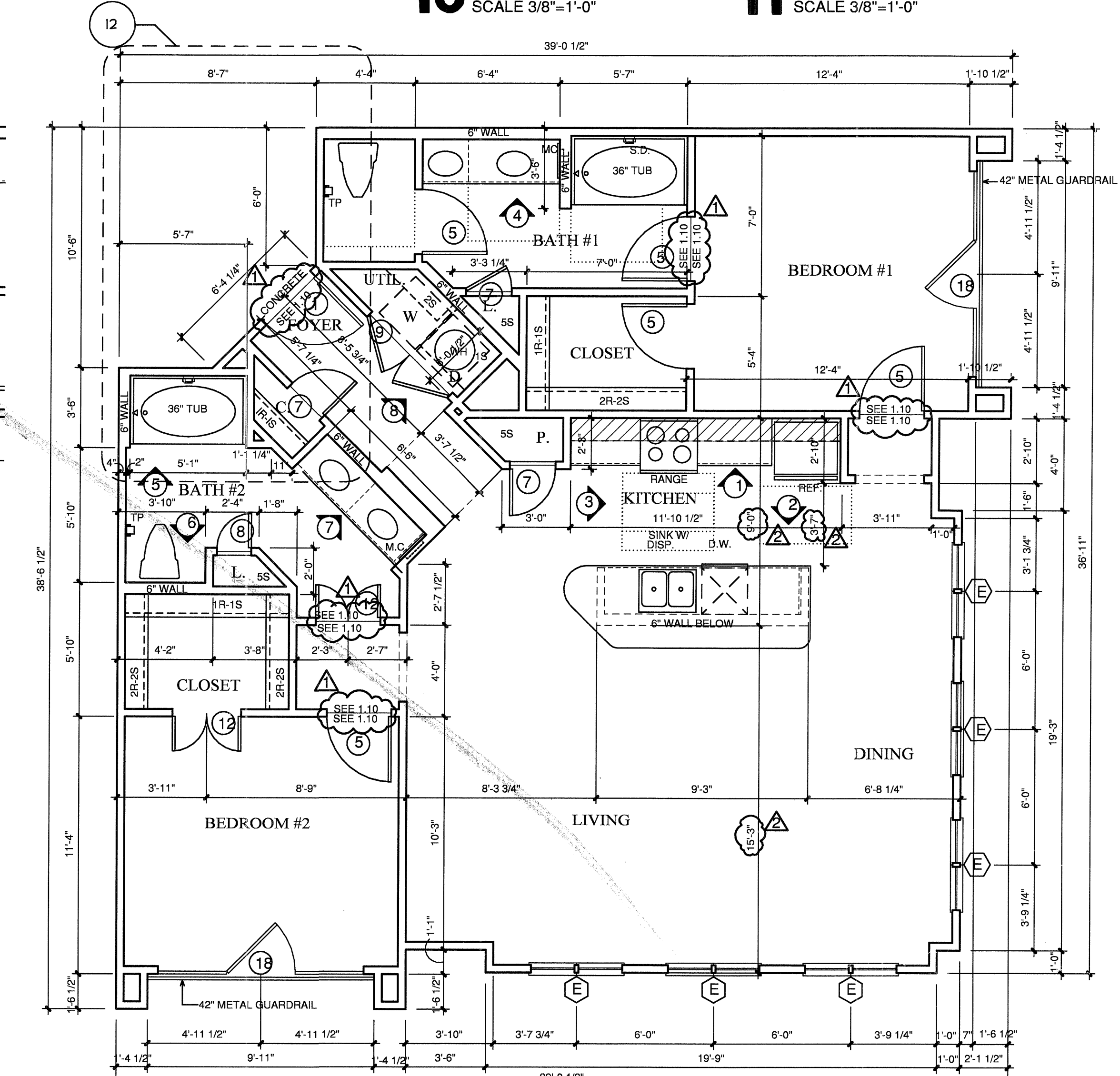
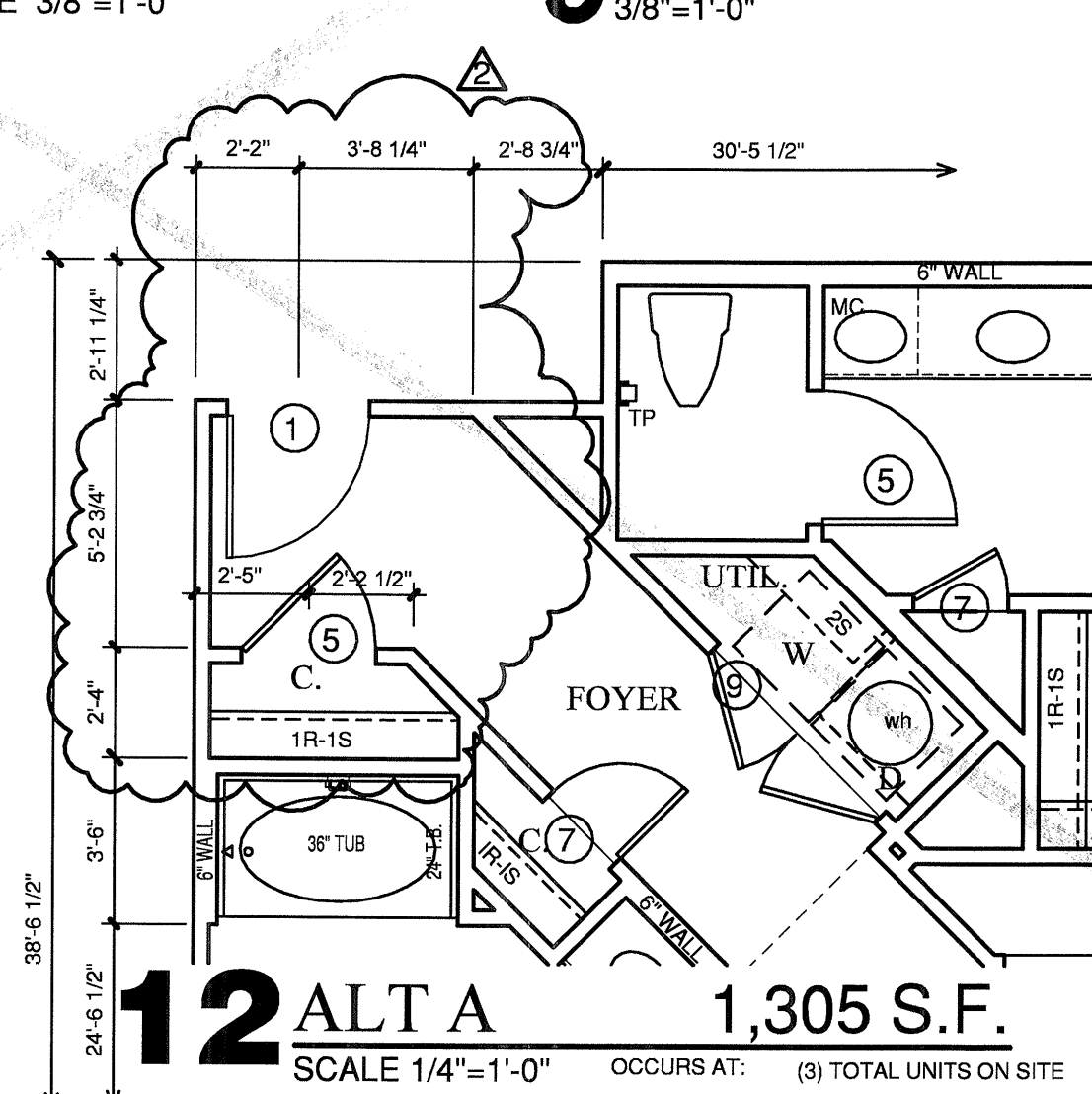
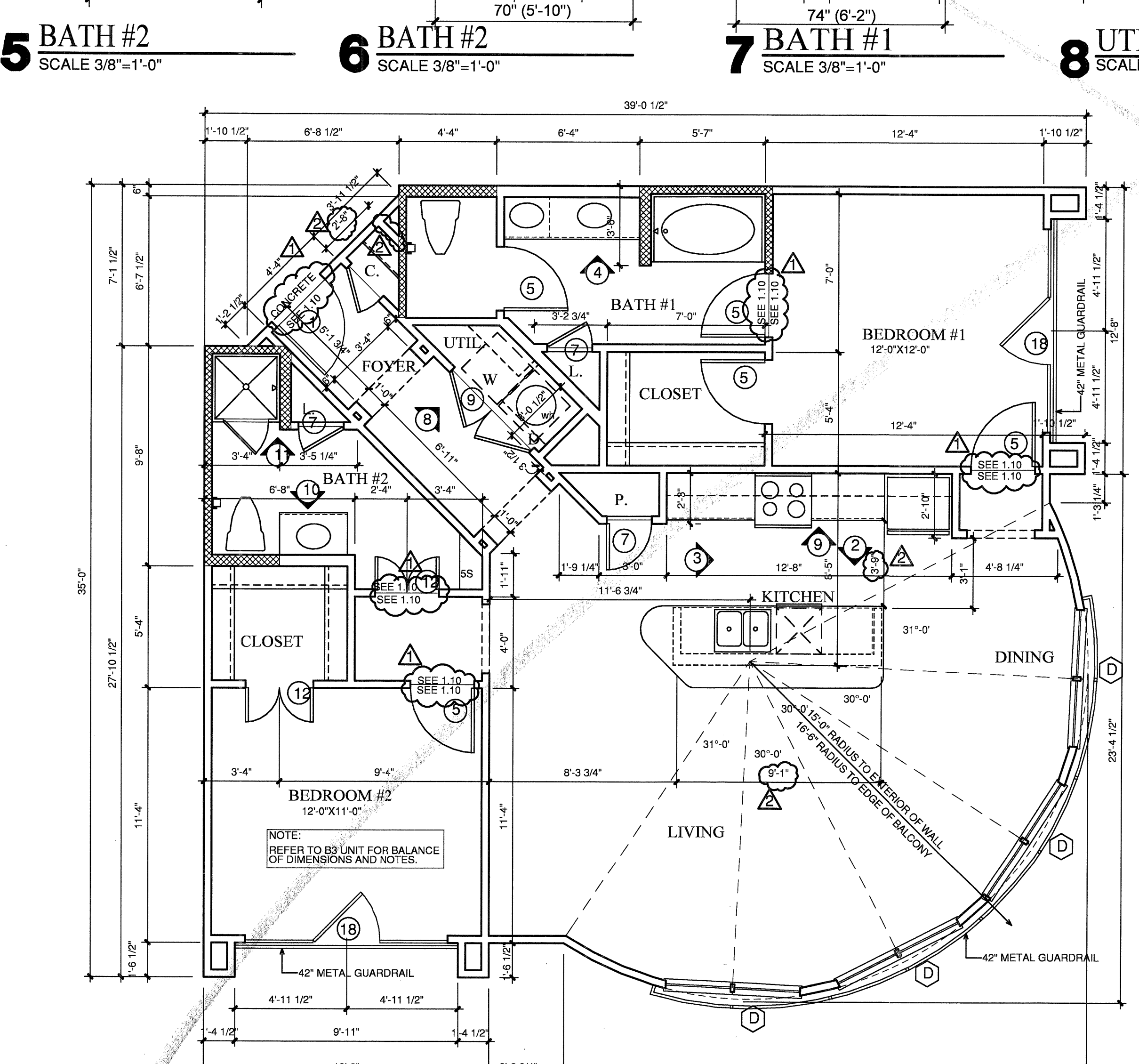
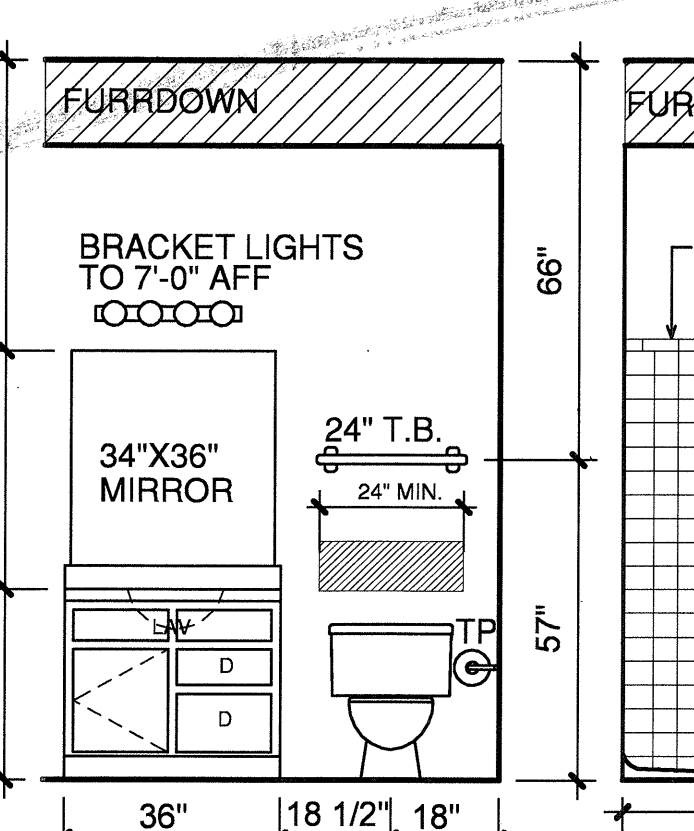
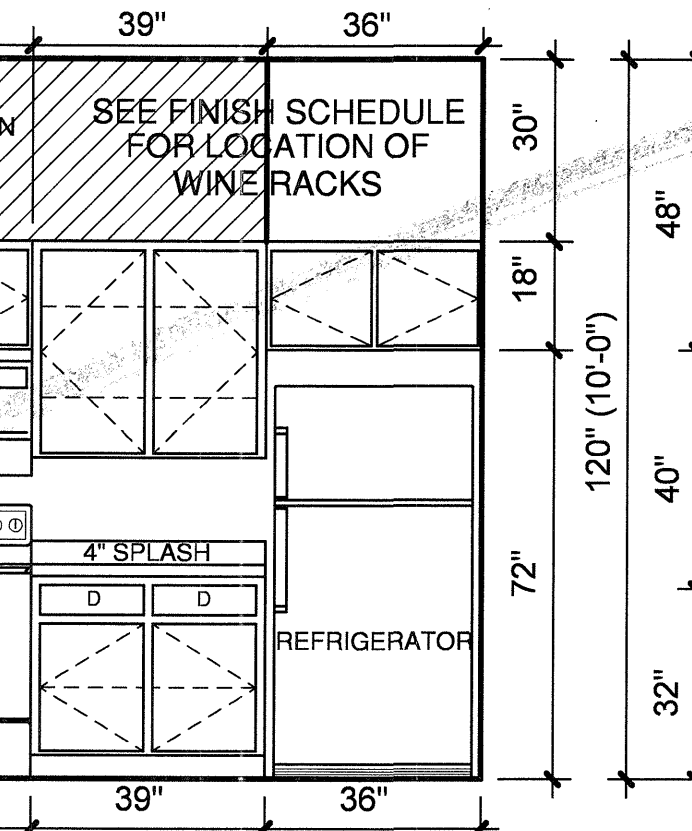
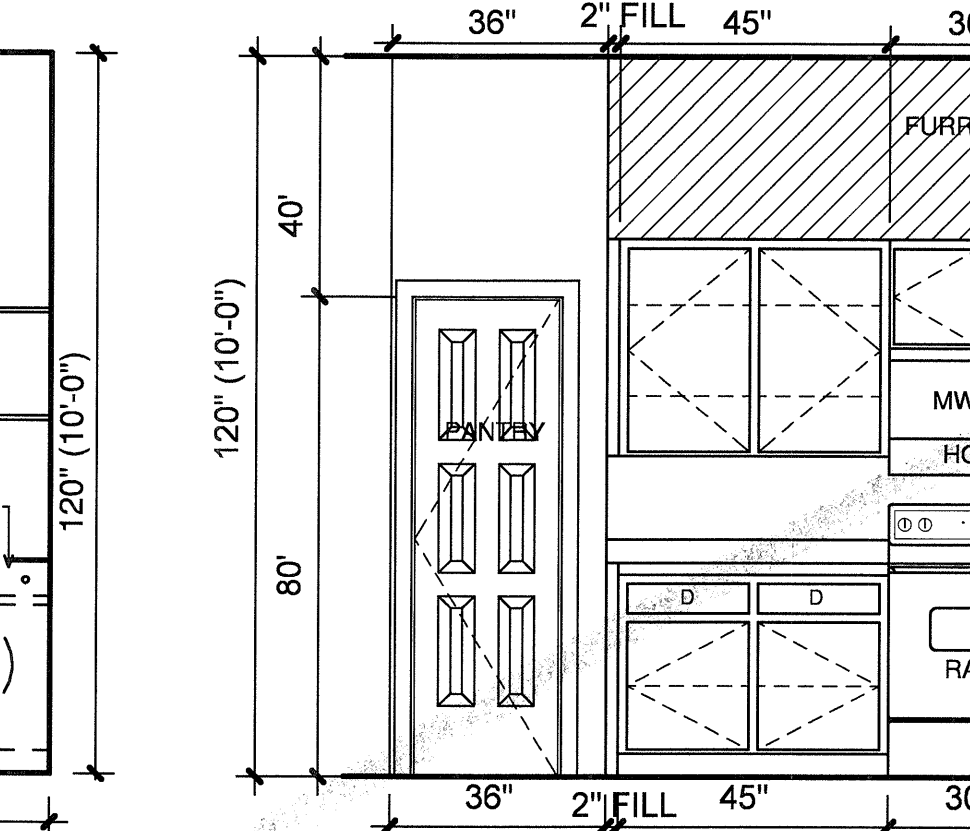
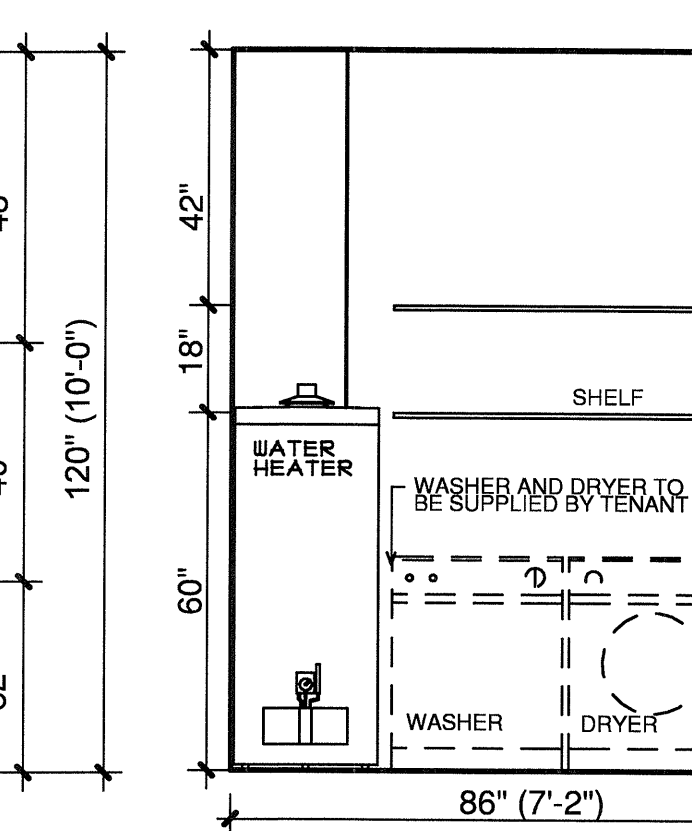
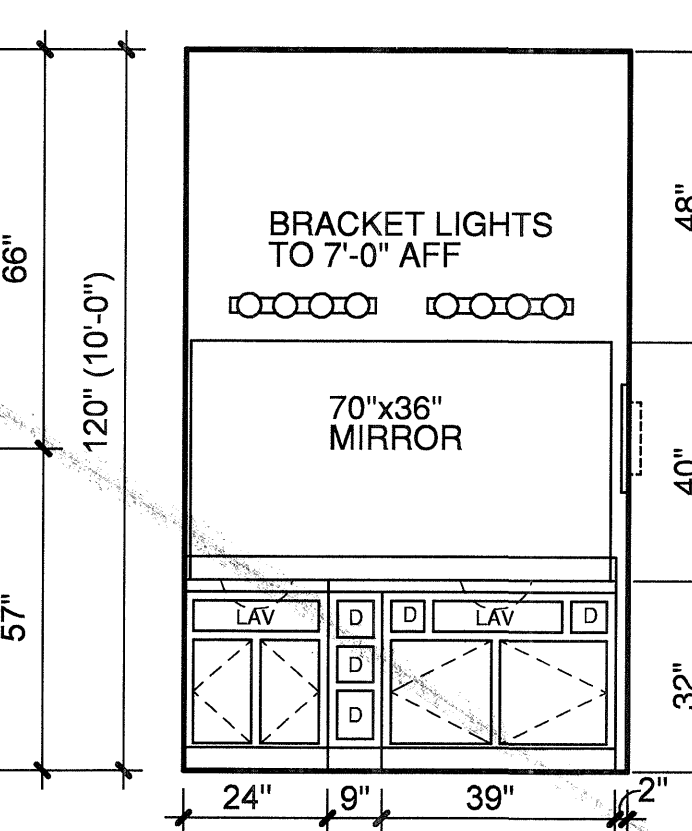
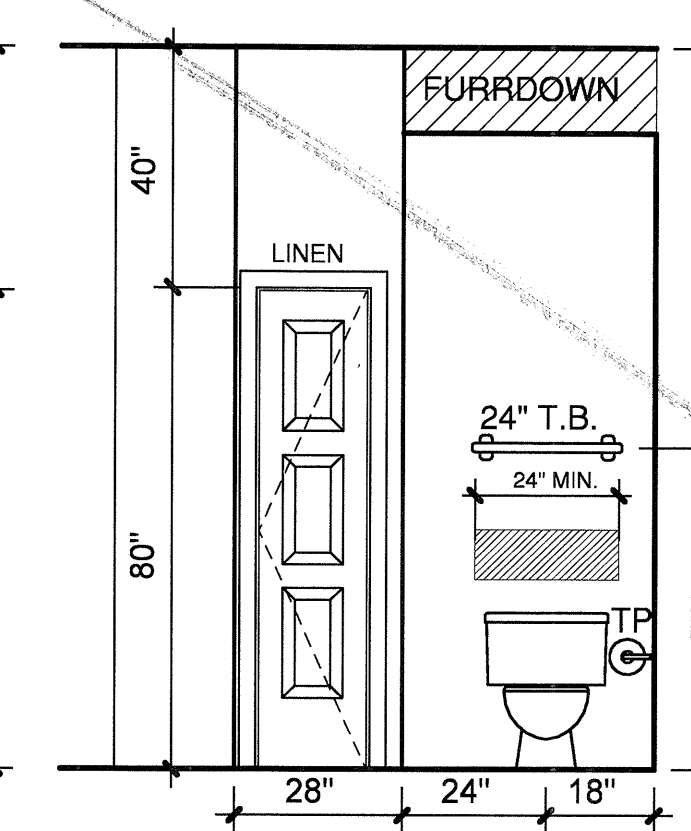
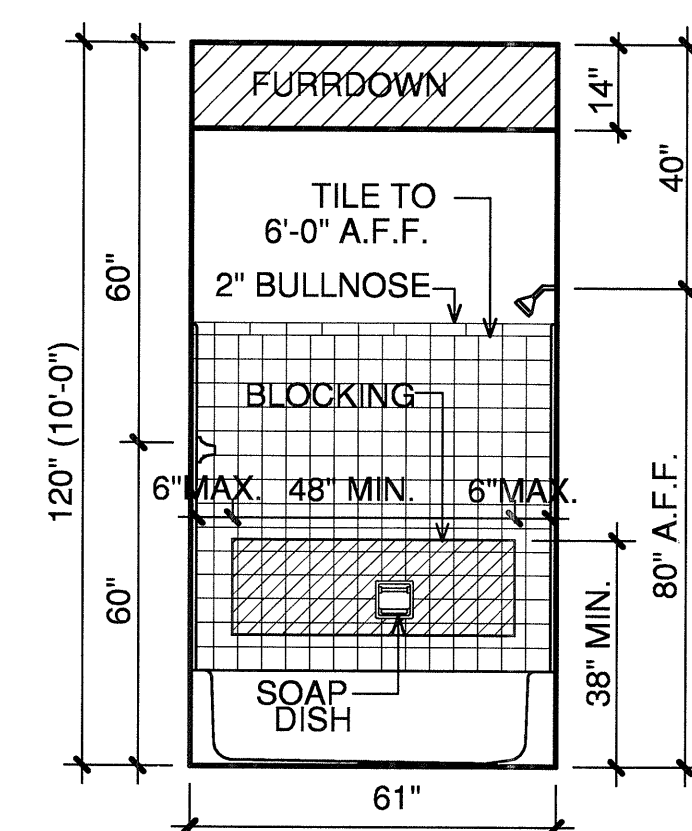
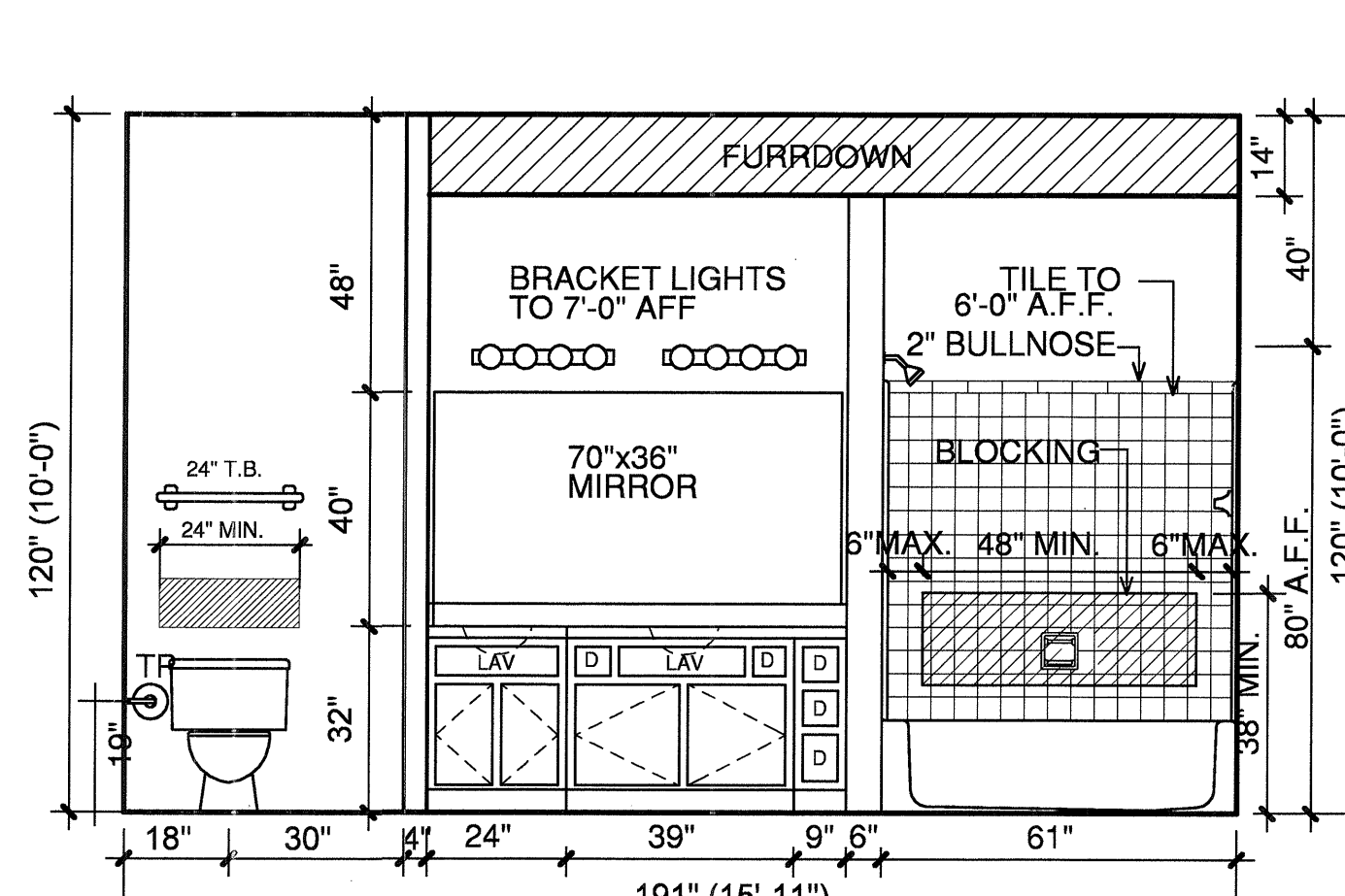
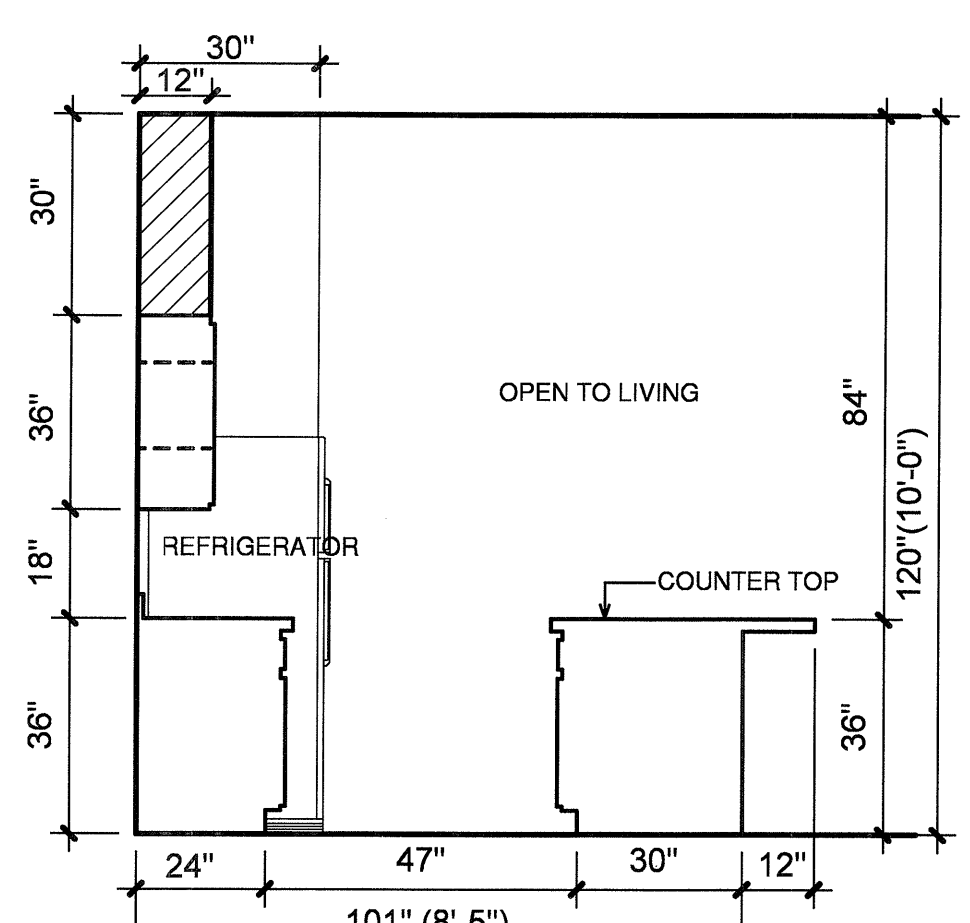
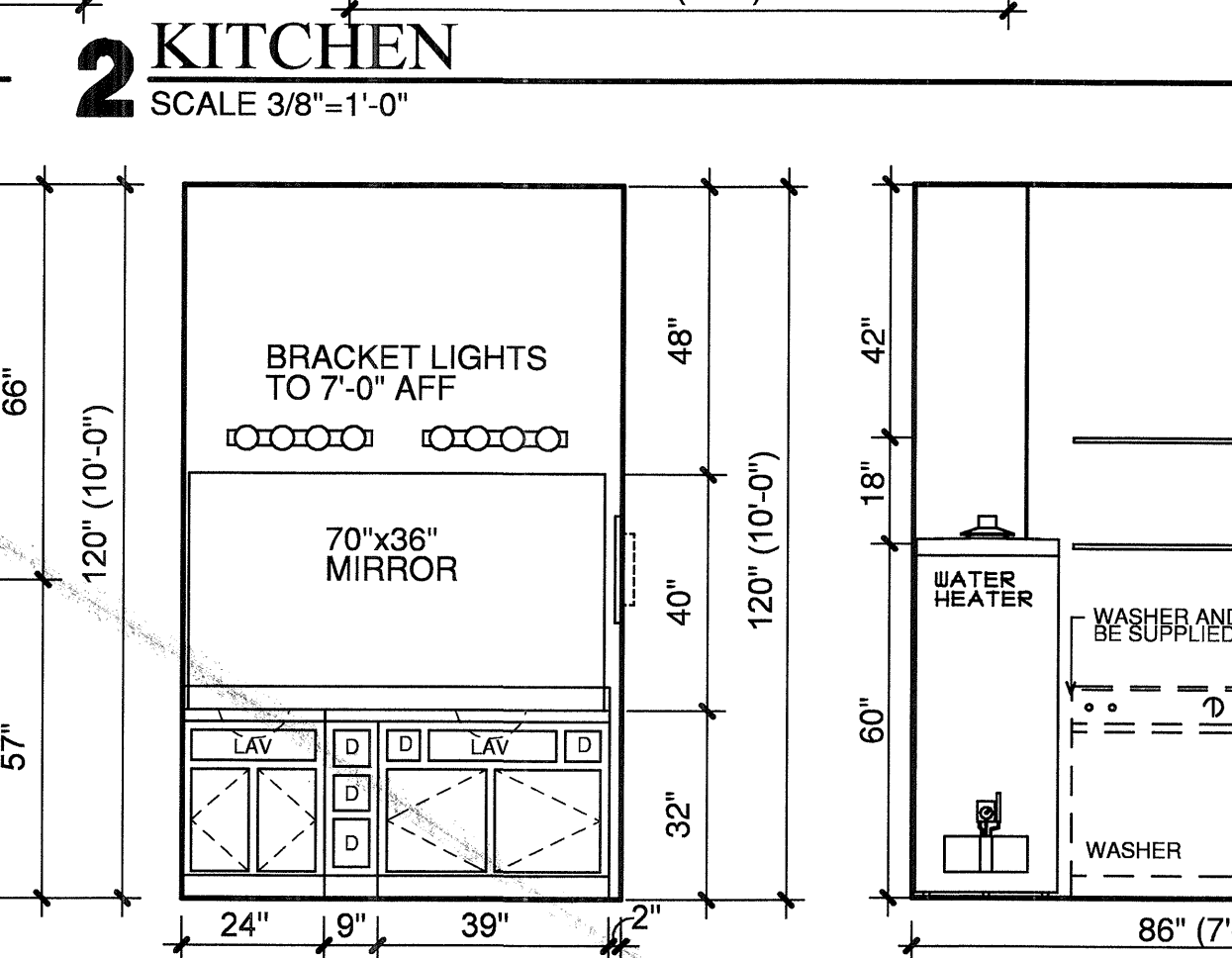
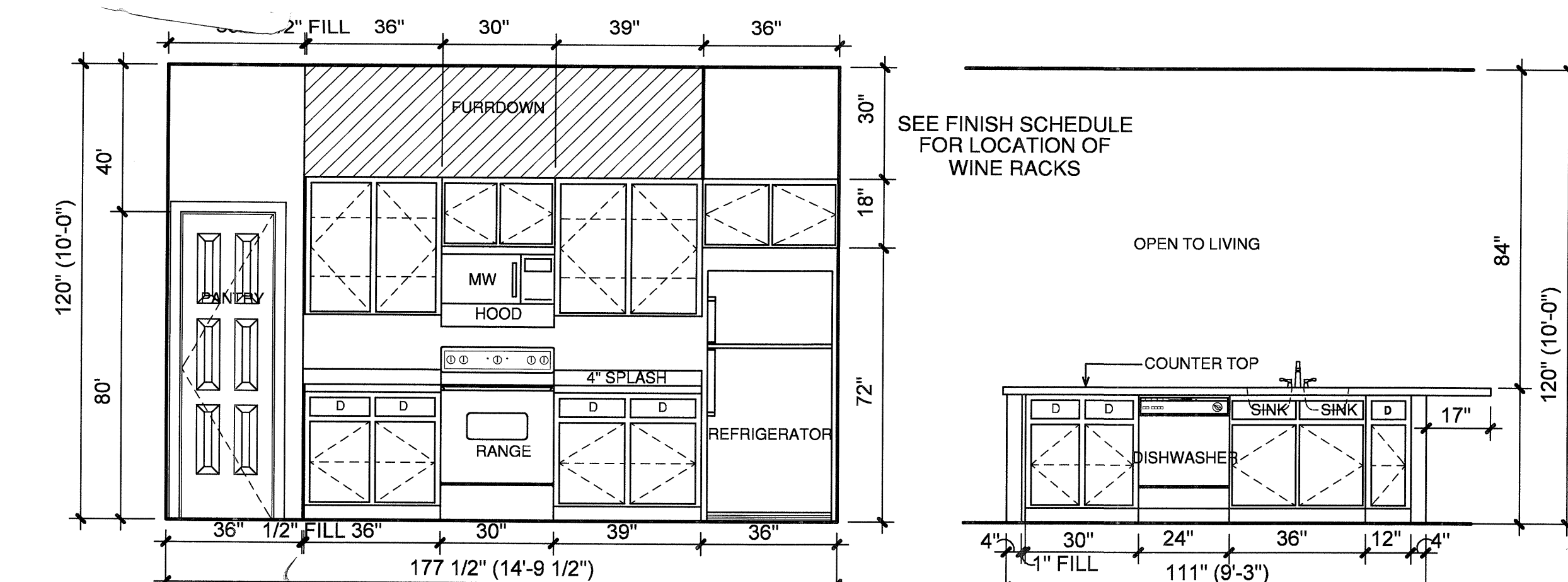


NOTES:
 CEILING HEIGHTS ARE 9'-0"
 ON THE 2ND, 3RD, AND 4TH FLOORS.
 REFERENCE SHEET 3.1 FOR VARYING
 CEILING HEIGHTS AT FIRST FLOOR.

NOTES:
 CROSSHATCHING ON PLAN INDICATES
 SUFFICIENT REINFORCING TO BE
 PROVIDED FOR GRAB BARS.
 4" FURRDOWN
 30" X 48" CLEAR SPACE

COORDINATE ALL FURRDOWN LOCATIONS
 WITH MECHANICAL SHOP DRAWINGS



REVISIONS
 OWNER
 COORDINATION
 09-01-2011
 ANS/FHA COMMENTS
 09-13-2011

KELLER SPRINGS LOFTS
 LOFT APARTMENTS IN ADDISON, TEXAS

CONSTRUCTION ISSUE
 10-17-2011

BGO
 architects
 4144 N. Central Expy.
 Suite 855
 Dallas, TX 75204
 214.520.8878
 bgoarchitects.com

DATE
 08-05-2011
 PROJECT
 11129
 SHEET NUMBER

2.8
B3 UNIT

COPYRIGHT © Beater Guest Owners Architects All Rights Reserved