



03-07-2012

NOTES:
CEILING HEIGHTS ARE 9'-0"
ON THE 2ND, 3RD, AND 4TH FLOORS.
REFERENCE SHEET 3.1 FOR VARYING
CEILING HEIGHTS AT FIRST FLOOR.

NOTES:
CROSSHATCHING ON PLAN INDICATES
AREAS TO BE
SUFFICIENTLY BLOCKED
FOR GRAB BARS.
1" FURRDOWN
30" X 48"
CLEAR
FLOOR
SPACE

COORDINATE ALL
FURRDOWN LOCATIONS
WITH MECHANICAL
SHOP DRAWINGS

REVISIONS
OWNER
COORDINATION
09-01-2011
ANSI/FHA COMMENTS
09-13-2011
COORDINATION
04-17-2012

KELLER SPRINGS LOFTS
LOFT APARTMENTS IN ADDISON, TEXAS

CONSTRUCTION ISSUE
10-17-2011

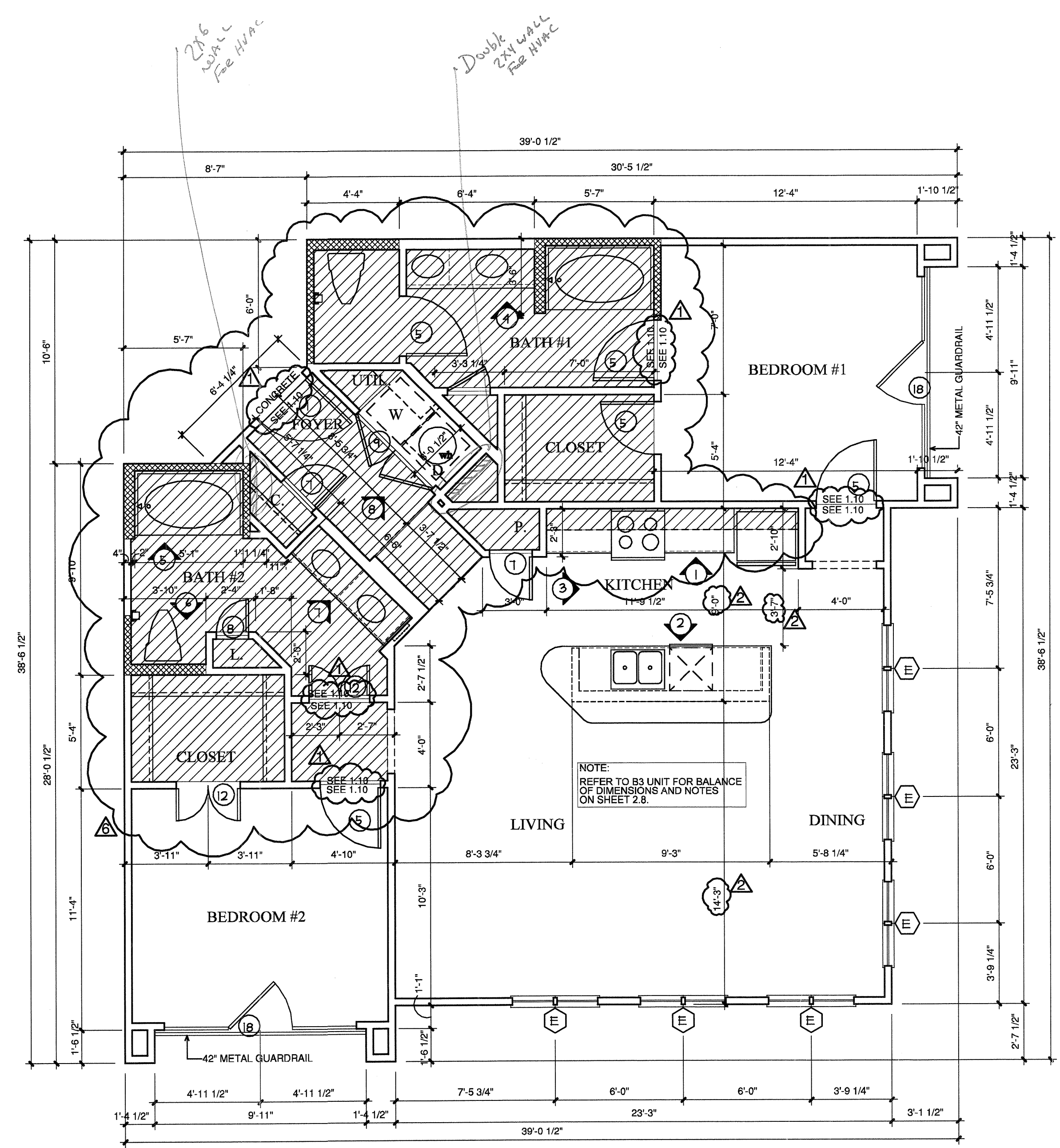
BGO
architects
4144 N. Central Expy.
Suite B55
Dallas, TX 75204
214.520.8878
bgoarchitects.com

DATE
08-05-2011

PROJECT
11129

SHEET NUMBER

2.8A
B3 UNIT



B3 TWO BEDROOM/TWO BATH (ALTC) 1,243 S.F.
SCALE 1/4"=1'-0" OCCURS AT: (1) TOTAL UNITS ON SITE

COPYRIGHT © Beiler Guest Owens Architects All Rights Reserved