

**EMBREY BUILDERS, LLC.**  
 1020 N. E. Loop 410, Suite 700  
 San Antonio, TX 78209  
 Ph: (210) 824-6044 Fax: (210) 824-7656

RFI

**To:** Erik Earnshaw  
 BGO Architects  
 4144 N. Central Expressway  
 Suite 855  
 Dallas, TX 75205  
 Ph: (214)520-8878

**RFI #: 41**  
**Date:** 1/28/2012  
**Job:** EB-02 Keller Springs Lofts  
**Phone:** 877-777-5115

**CC:** David Gallagher (Embrey Build (Embrey Construction LLC))

**Subject:** Elevation conflict A1 part 1 Division F

**Drawing:** 3.1F. 4.1  
**Cost Impact:** None

**Spec Section:**  
**Schedule Impact:** None

**Request:** Date Required: 2/2/2012  
 8/2.2 shows the A1 partial 1 as having an H mark window in bedroom. 3.1F shows the A1 part units with a 3' window H= 3'. 1/4.1 shows same A1 part. unit with a 4' window. Please give direction.

**Requested by:** Bryan Pickler  
 Embrey Partners, Ltd.

**Response:**  
 All plans are accurate. The elevations have been updated.  
 See next pages for more info.

Ryan Faulds  
 Answered by  
 BGO architects  
 Company

Feb 28, 2012  
 Date

**EMBREY BUILDERS, LLC.**  
 1020 N. E. Loop 410, Suite 700  
 San Antonio, TX 78209  
 Ph: (210) 824-6044 Fax: (210) 824-7656

RFI

**To:** Erik Earnshaw  
 Beeler Guest Owens Architects  
 4245 N. Central Expressway  
 Suite 300  
 Dallas, TX 75205  
 Ph: 214/520-8878 Fax: 214/520-8878

**RFI #: 90**  
**Date:** 3/27/2012  
**Job:** EB-02 Keller Springs Lofts  
**Phone:** 877-777-5115

**CC:**

**Subject:** Cuts at Slab Drops

**Drawing:** A3.1F  
**Cost Impact:** None

**Spec Section:**  
**Schedule Impact:** None

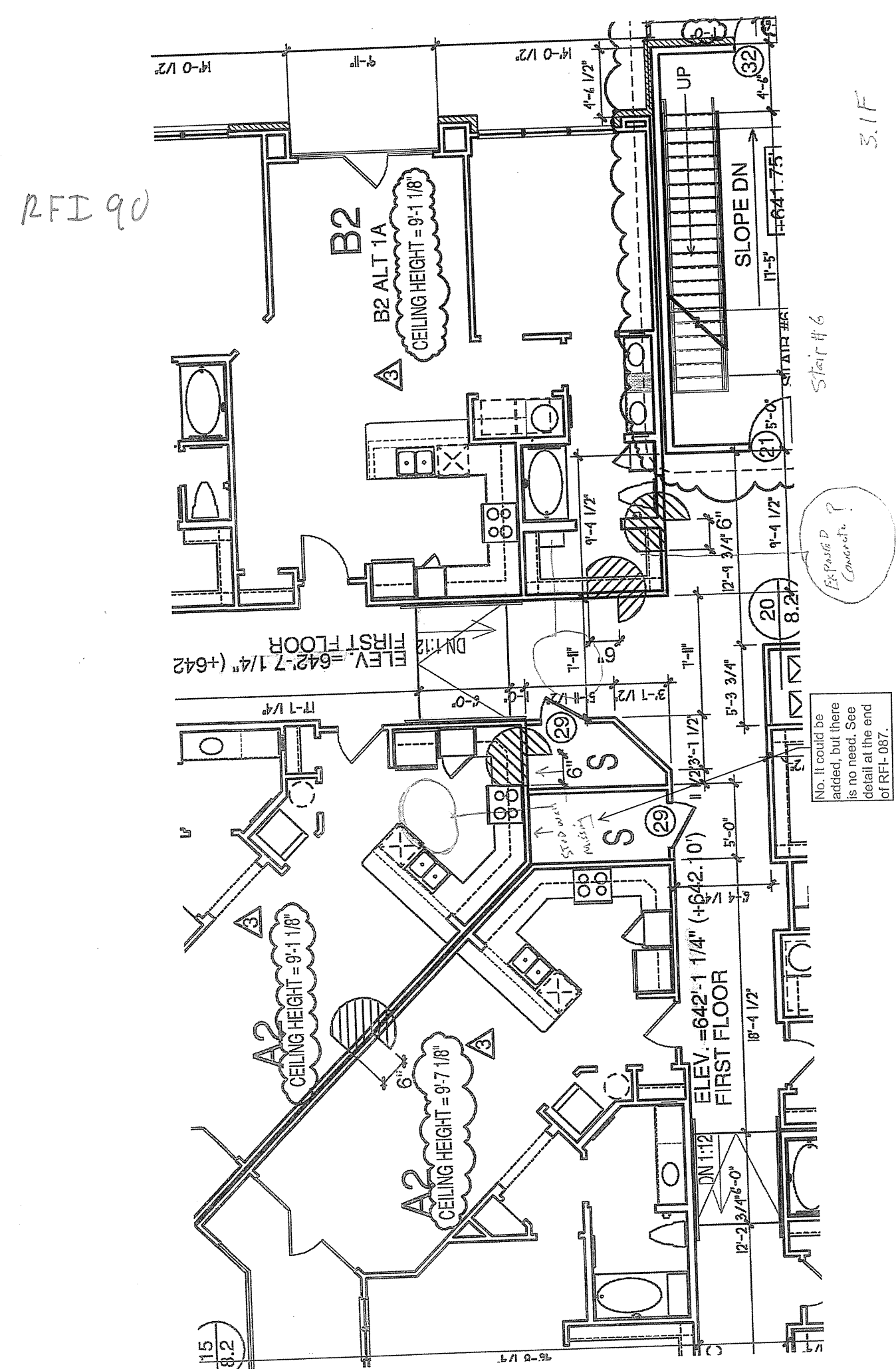
**Request:** Date Required: 4/3/2012  
 The attached drawing shows (in purple) a 6" drop in the slab. It seems that another wall is needed in the two storage rooms. Also there will be exposed concrete where we would like to see a detail for how to finish that out at the locations shown.

**Requested by:** David Miller  
 Embrey Builders LLC

**Response:**  
 Most of this RFI is answered in RFI-087.  
 See next pages for additional info.

Ryan Faulds  
 Answered by  
 BGO architects  
 Company

April 04, 2012  
 Date



RFI 90

3.1F

Stair #6

8.2'

8.2'

8.2'

8.2'

8.2'