

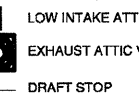
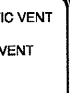
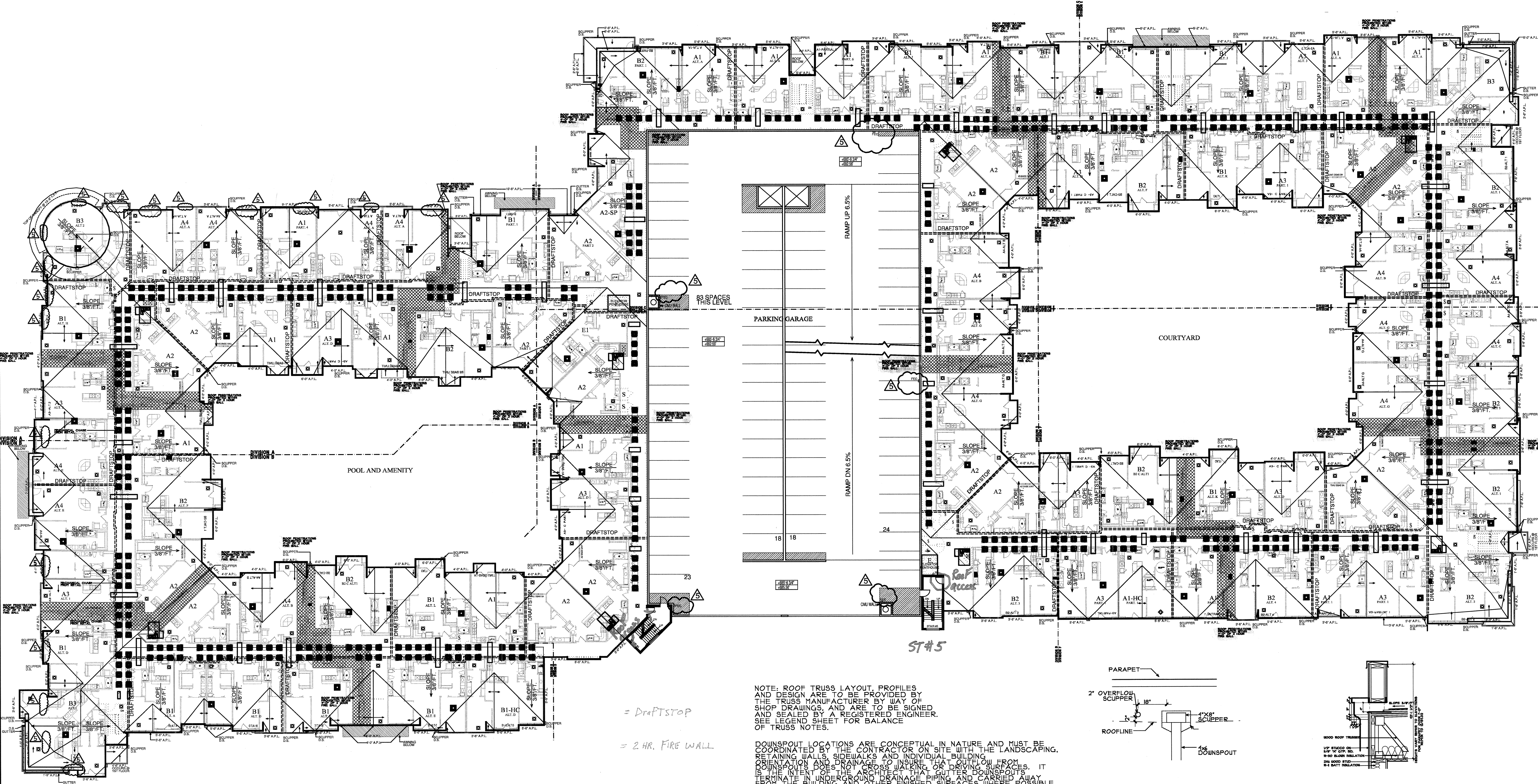


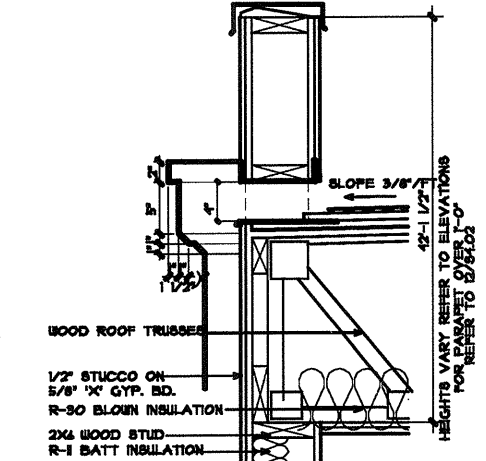
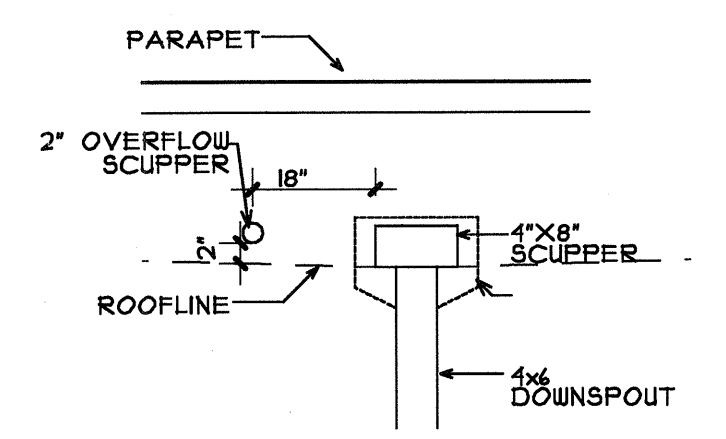
ROOF LEGEND:  
 LOCAL AREA WITH NO ROOF PENETRATIONS  
 LOW PITCH ATTIC VENT  
 EXHAUST ATTIC VENT  
 DRAFT STOP



NOTE: ROOF TRUSS LAYOUT, PROFILES AND DESIGN ARE TO BE PROVIDED BY THE TRUSS MANUFACTURER BY WAY OF SHOP DRAWINGS, AND ARE TO BE SIGNED AND SEALED BY A REGISTERED ENGINEER. SEE LEGEND SHEET FOR BALANCE OF TRUSS NOTES.

DOWNSPOUT LOCATIONS ARE CONCEPTUAL IN NATURE AND MUST BE COORDINATED BY THE CONTRACTOR ON SITE WITH THE LANDSCAPING, RETAINING WALLS, SIDEWALKS AND INDIVIDUAL BUILDING ORIENTATION AND DRAINAGE TO INSURE THAT OUTFLOW FROM DOWNSPOUTS DOES NOT CROSS WALKING OR DRIVING SURFACES. IT IS THE INTENT OF THE ARCHITECT THAT CUTTER DOWNSPOUTS TERMINATE IN UNDERGROUND DRAINAGE PIPING AND CARRIED AWAY FROM THE BUILDING AND OTHER FINISHED SURFACES WHERE POSSIBLE.

DOWNSPOUTS IN COURTYARD ARE TO BE HARD PIPED INTO THE STORM DRAIN - REFER TO LANDSCAPE PLANS FOR LOCATIONS



**1** ROOF PLAN / GARAGE PLAN 5  
SCALE: 1:20

**2** SCUPPER ELEVATION  
N.T.S.

**3** SCUPPER SECTION DETAIL  
N.T.S.

**BGO**  
architects  
4144 N. Central Expy.  
Suite 855  
Dallas, TX 75204  
214.520.8878  
bgoarchitects.com

CONSTRUCTION ISSUE  
10-17-2011

REVISIONS
COORDINATION 10-17-2011
GARAGE REVISIONS PER SHOP DWGS 01-03-2012
COORDINATION 02-29-2012

**KELLER SPRINGS LOFTS**  
LOFT APARTMENTS IN ADDISON, TEXAS

REGISTERED ARCHITECT  
STATE OF TEXAS  
22433  
01-03-2012

DATE  
08-05-2011  
PROJECT  
11129

SHEET NUMBER  
**3.5**