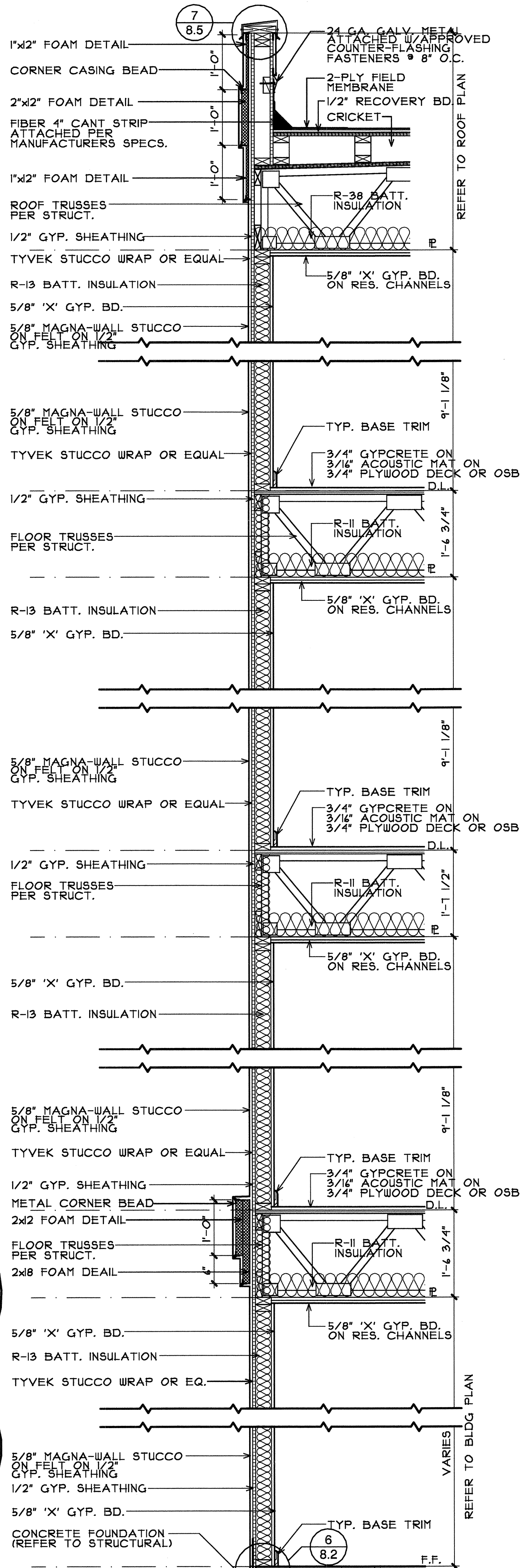


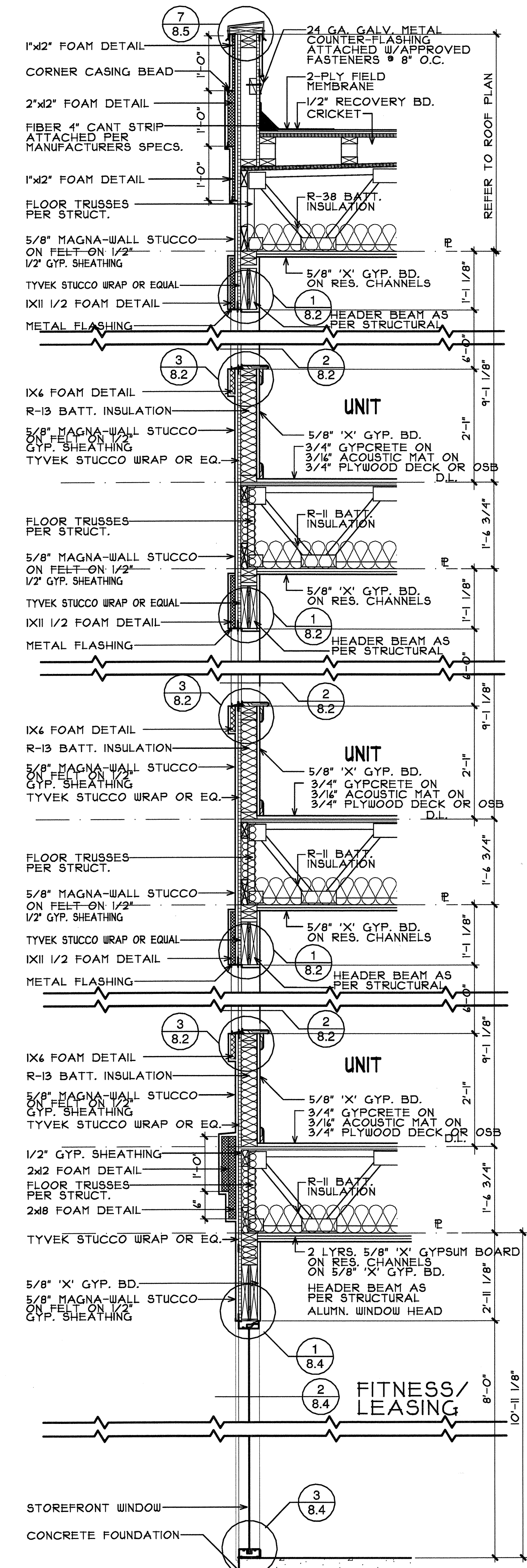
NOTE * ALL FOAM DETAIL LOCATIONS:
 5/8" MAGNA-WALL STUCCO ON FOAM DETAIL ON 1/2" TYVEK STUCCOWRAP ON 1/2" GYP. SHEATHING

NOTE:
 BID ALTERNATE TPO ROOFING



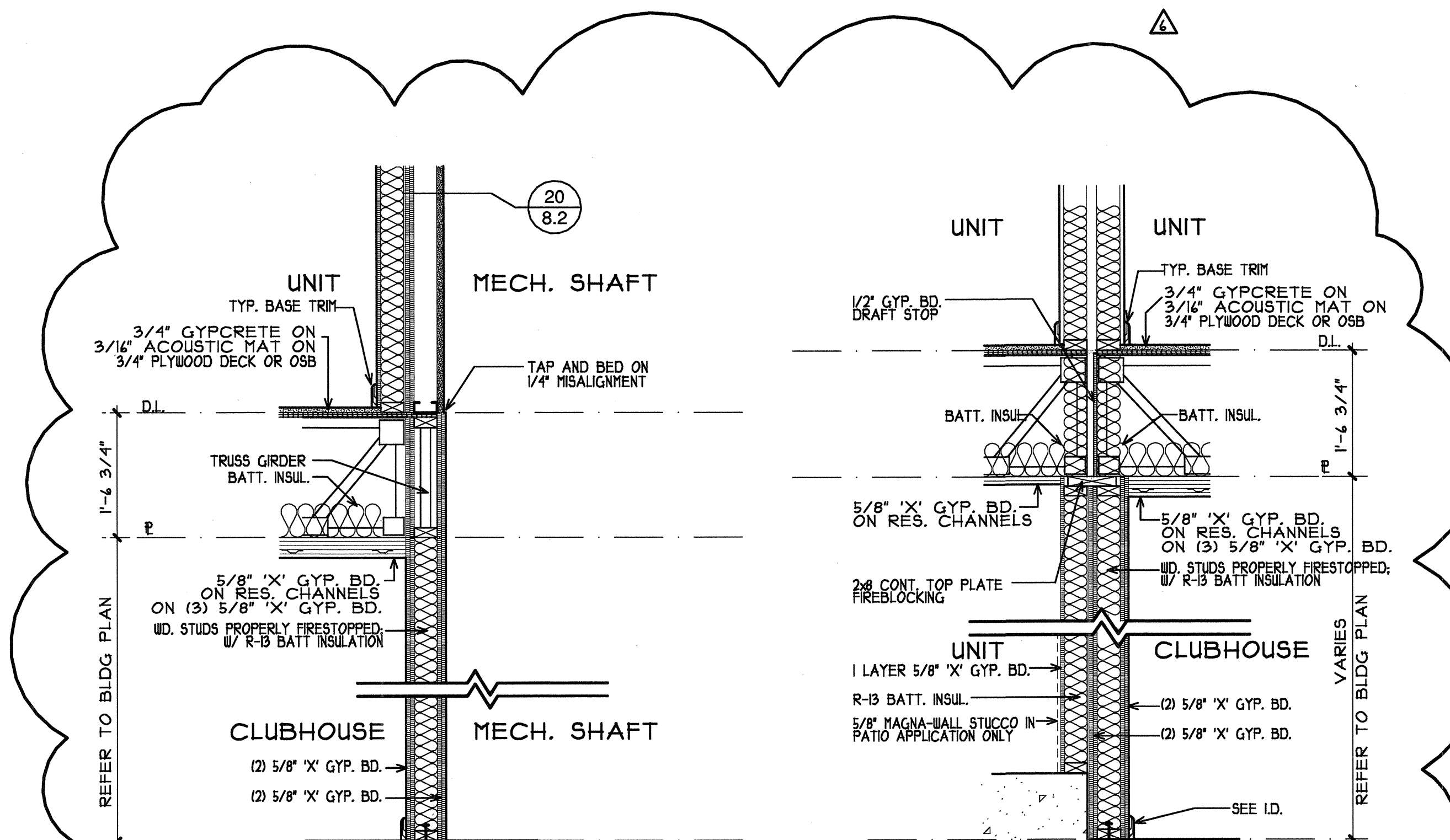
3 4 STORY EXT. STUCCO WALL
 3/4"=1'-0"

FIRE RATINGS: ROOF/CLG-1 HR.-U.L. #P522 FLOOR/CLG-1 HR.-U.L. #L550 WALL-1 HR.-U.L. #U305 FLOOR/CLG-2 HR.-U.L. #L554
 SOUND RATINGS: FLOOR/CLG-STC (2160 REQ.)+ WITH FLOOR COVERING



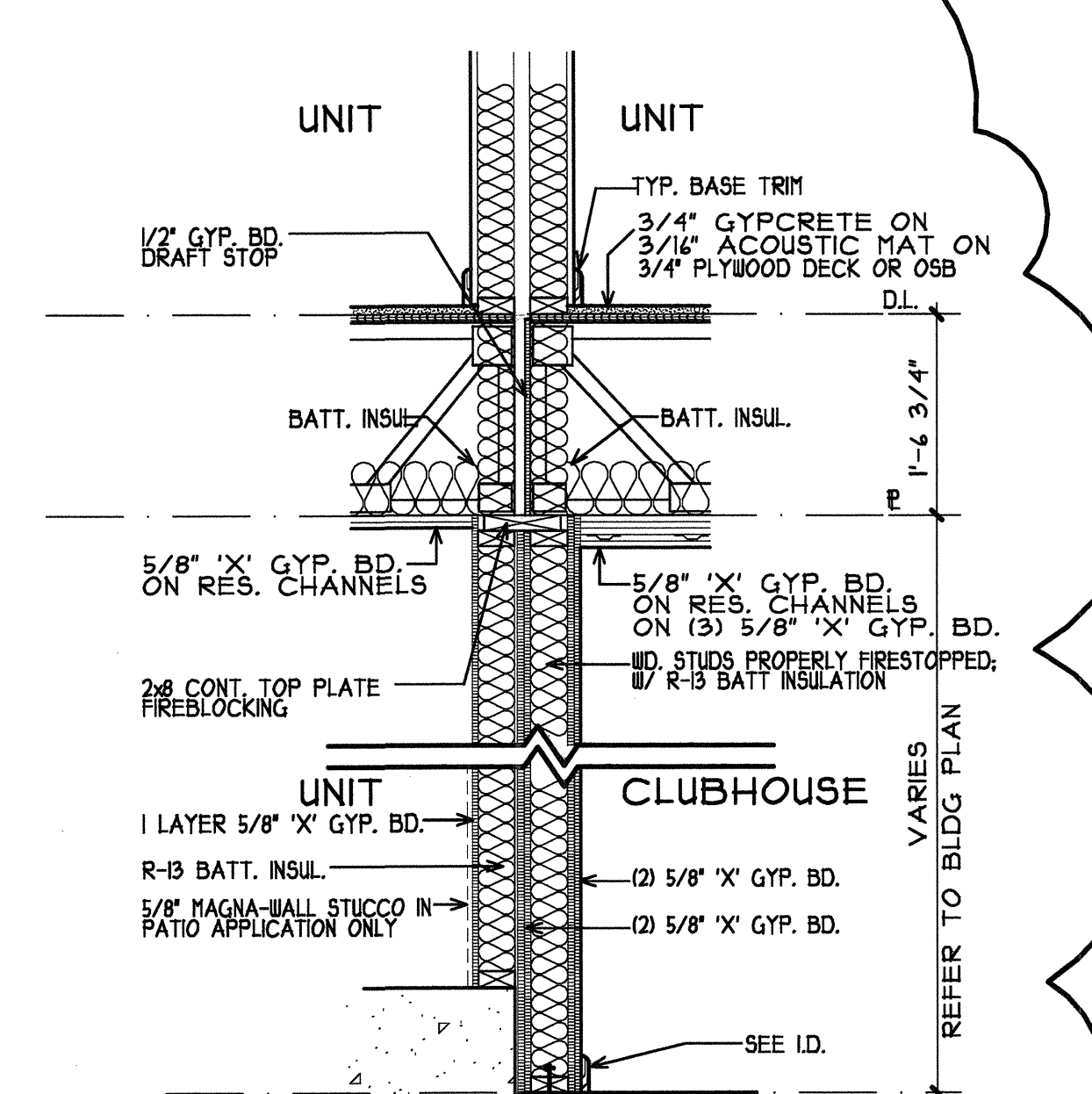
4 1-STORY EXT. STUCCO WALL @ CLUB
 3/4"=1'-0"

FIRE RATINGS: ROOF/CLG-1 HR.-U.L. #P522 FLOOR/CLG-1 HR.-U.L. #L550 WALL-1 HR.-U.L. #U305 FLOOR/CLG-2 HR.-U.L. #L554
 SOUND RATINGS: FLOOR/CLG-STC (2160 REQ.)+ WITH FLOOR COVERING



1 CLUB FIRE PARTITION WALL
 3/4"=1'-0"

FIRE RATINGS: ROOF/CLG-1 HR.-U.L. #P522 FLOOR/CLG-1 HR.-U.L. #L550 WALL-2 HR.-U.L. #U305 FLOOR/CLG-2 HR.-U.L. #L554
 SOUND RATINGS: FLOOR/CLG-STC (2160 REQ.)+ WITH FLOOR COVERING



2 CLUB FIRE PARTITION WALL
 3/4"=1'-0"

FIRE RATINGS: ROOF/CLG-1 HR.-U.L. #P522 FLOOR/CLG-1 HR.-U.L. #L550 WALL-2 HR.-U.L. #U305 FLOOR/CLG-2 HR.-U.L. #L554
 SOUND RATINGS: FLOOR/CLG-STC (2160 REQ.)+ WITH FLOOR COVERING



REVISIONS
 10-17-2011
 10-17-2011
 04-17-2012

KELLER SPRINGS LOFTS
 LOFT APARTMENTS IN ADDISON, TEXAS

CONSTRUCTION ISSUE
 10-17-2011

BGO architects
 4144 N. Central Expy. Suite 855
 Dallas, TX 75204
 214.520.8878
 bgoarchitects.com

DATE
 08-05-2011

PROJECT
 11129

SHEET NUMBER

7.2

4 ST. WALL

COPYRIGHT © Beeler, Guest, Owens Architects ALL RIGHTS RESERVED