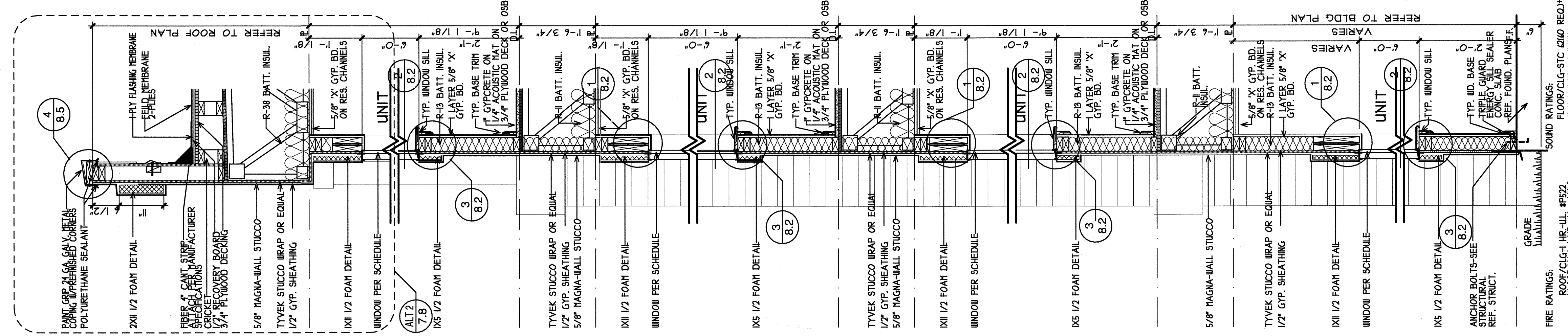


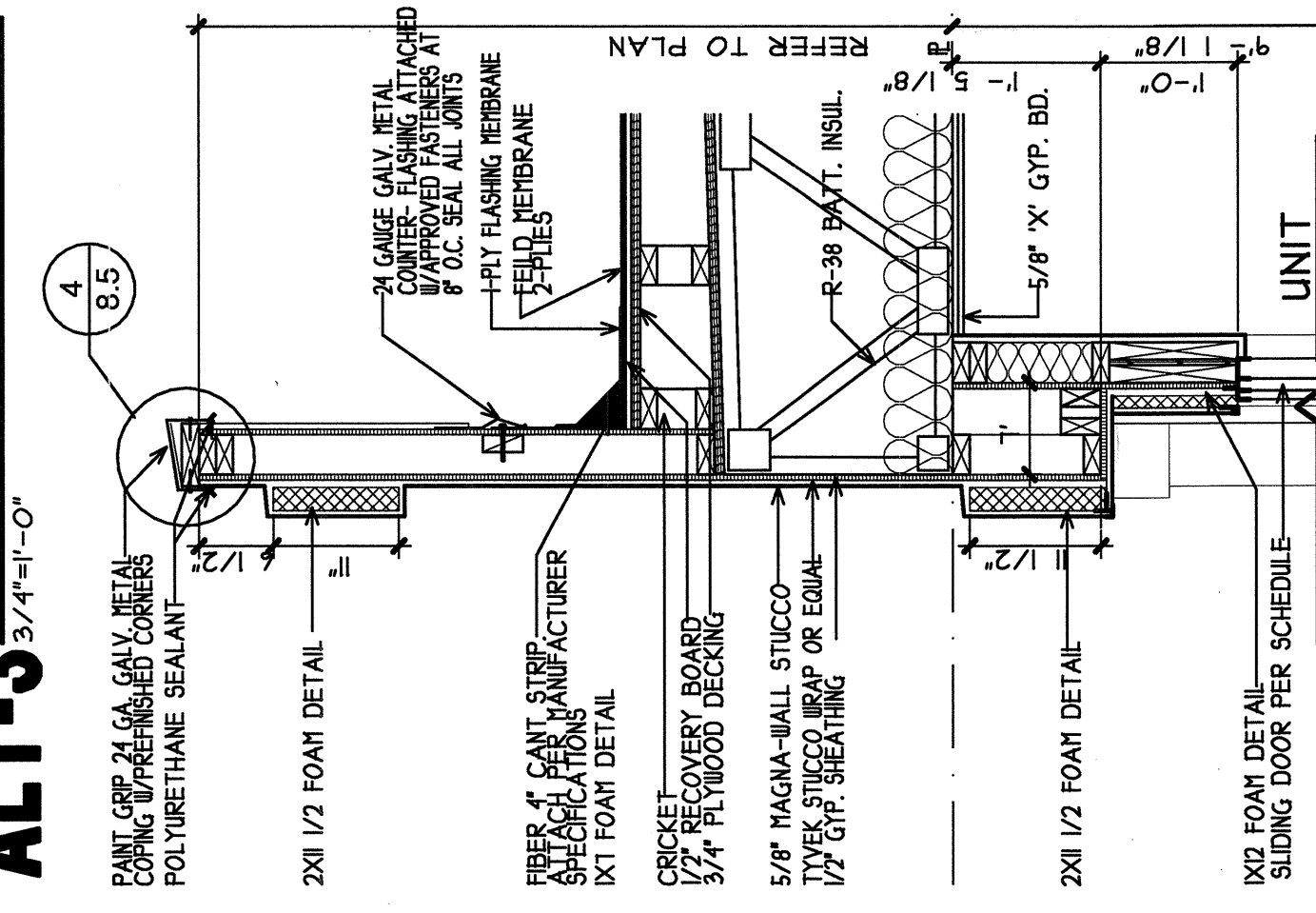
ALT-4 3/4"=1'-0"

NOTE: ALL FOAM DETAIL LOCATIONS:
1/2" FOAM DETAIL ON 5/8" MAGMA-WALL
STUCCO ON 1/2" GYP. SHEATHING

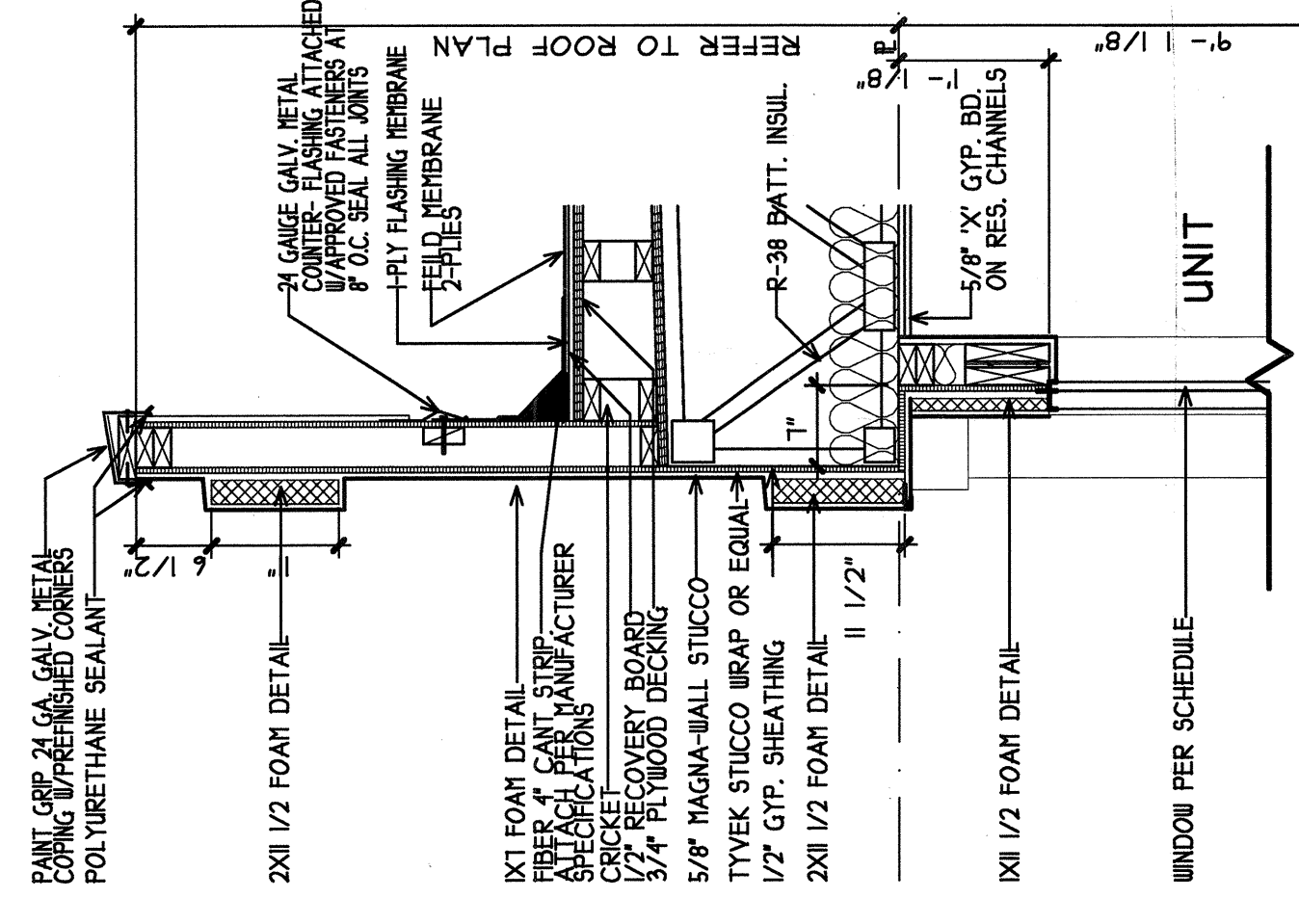
NOTE:
BID ALTERNATE TPO ROOFING



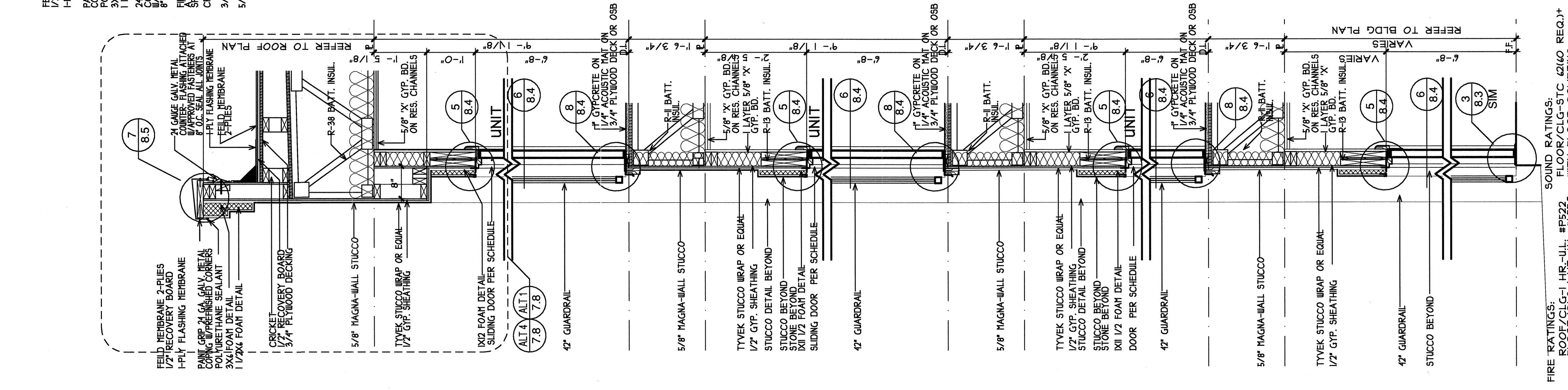
ALT-3 3/4"=1'-0"



ALT-2 3/4"=1'-0"



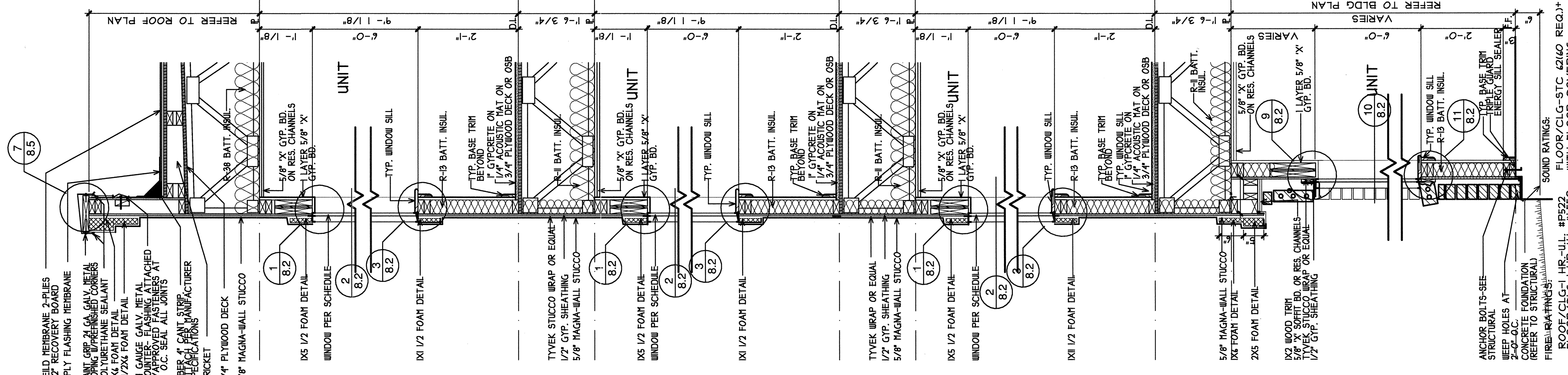
ALT-1 3/4"=1'-0"



3 3/4"=1'-0"

4-STORY EXT. - STUCCO

FIRE RATINGS:
ROOF/CLG-1 HR-UL, #P522
FLOOR/CLG-1 HR-UL, #L550
WALL-1 HR-UL, #W691 • STUCCO



1 3/4"=1'-0"

4-STORY EXT. - BALCONY

FIRE RATINGS:
ROOF/CLG-1 HR-UL, #P522
FLOOR/CLG-1 HR-UL, #L550
WALL-1 HR-UL, #W691 • STUCCO

1 3/4"=1'-0"

4-STORY EXT. - STONE/STUCCO

SOUND RATINGS:
FLOOR/CLG-5TC 42/40 REQ.†
FLOOR/CLG-1 HR-UL, #L550
WALL-1 HR-UL, #W691 • STUCCO

BGO architects
4144 N. Central Expy.
Suite 855
Dallas, TX 75204
214.520.8878
bgoarchitects.com

DATE: 08-05-2011
PROJECT: 11129
SHEET NUMBER: 7.8
4 ST. WALL

CONSTRUCTION ISSUE
10-17-2011

KELLER SPRINGS LOFTS
LOFT APARTMENTS IN ADDISON, TEXAS

REVISIONS
COORDINATION
10-17-2011

10-17-2011