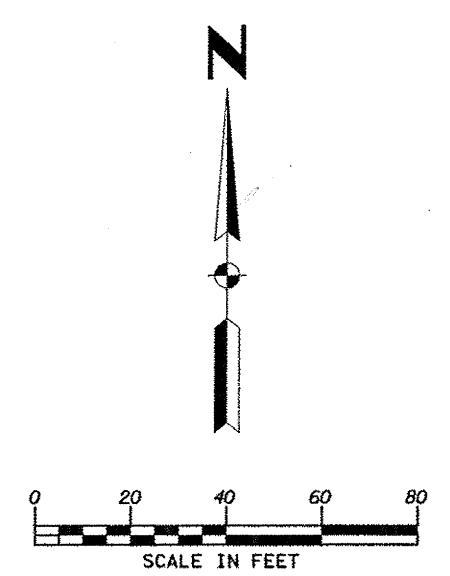


**CAUTION!**  
 EXIST. GAS MAIN IN AREA  
 CONTACT TEXAS ONE CALL  
 1-800-245-4545  
 48 HOURS PRIOR TO  
 CONSTRUCTION

REMOVE & DISPOSE EXIST. INLET  
 CONST. STD. 4" DIA. MH. AT THE END  
 OF EXIST. 18" RCP.  
 STA 0+00 BEGIN 18" RCP  
 TOP= 637.05, FL= 633.03

STA 0+00 LINE 'E'  
 REMOVE & DISPOSE EXIST. HDWL.  
 CONST. JUNCTION STRUCTURE  
 CONN. TO EXIST. 3-36" RCP  
 (SEE SHT. C19 FOR DETAILS)

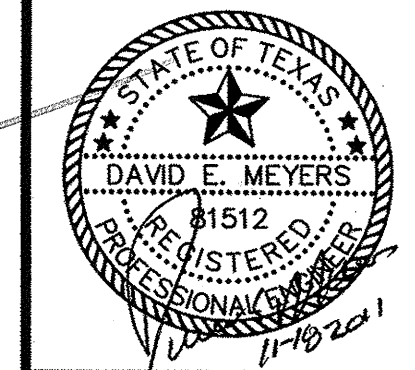
STA 0+06.64  
 END 18" RCP AT FACE INLET  
 CONST. STD. 10" RECESS INLET  
 TOP=636.60, FL= 632.60  
 HG=634.56



**KELLER SPRINGS ROAD**  
 asphalt pavement  
 10" SS  
 SERVICE

**Kimley-Horn  
 and Associates, Inc.**  
 2700 Park Central Drive, Suite 800  
 Dallas, Texas 75244  
 Phone: 972-770-9000  
 Fax: 972-770-9001

No.	Revision	Date
1	REVISED INLETS & STORM DRAIN	11/17/11

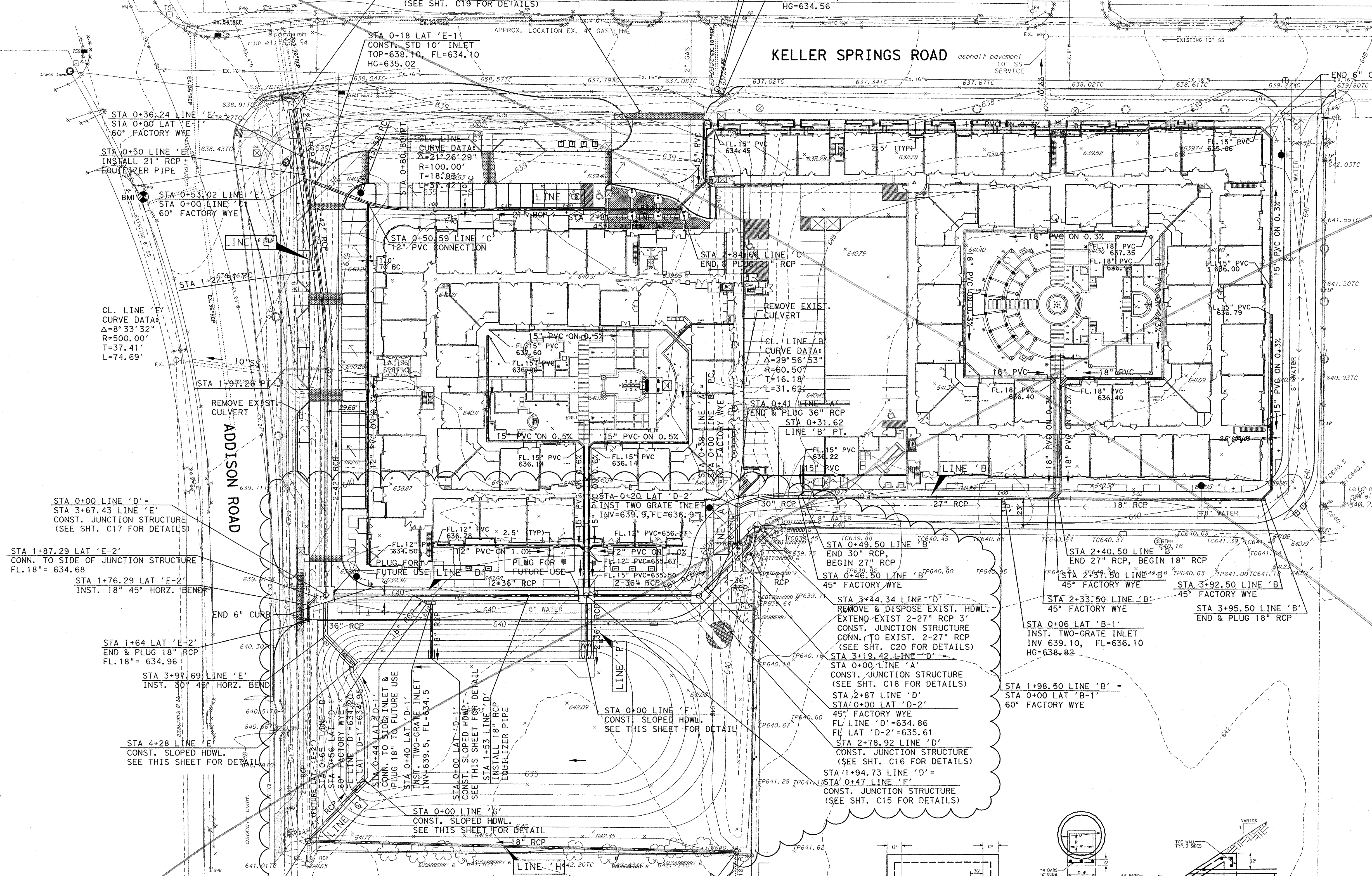


**Keller Springs Lofts  
 Loft Apartments in Addison**  
 Town of Addison, Texas

**STORM SEWER PLAN**

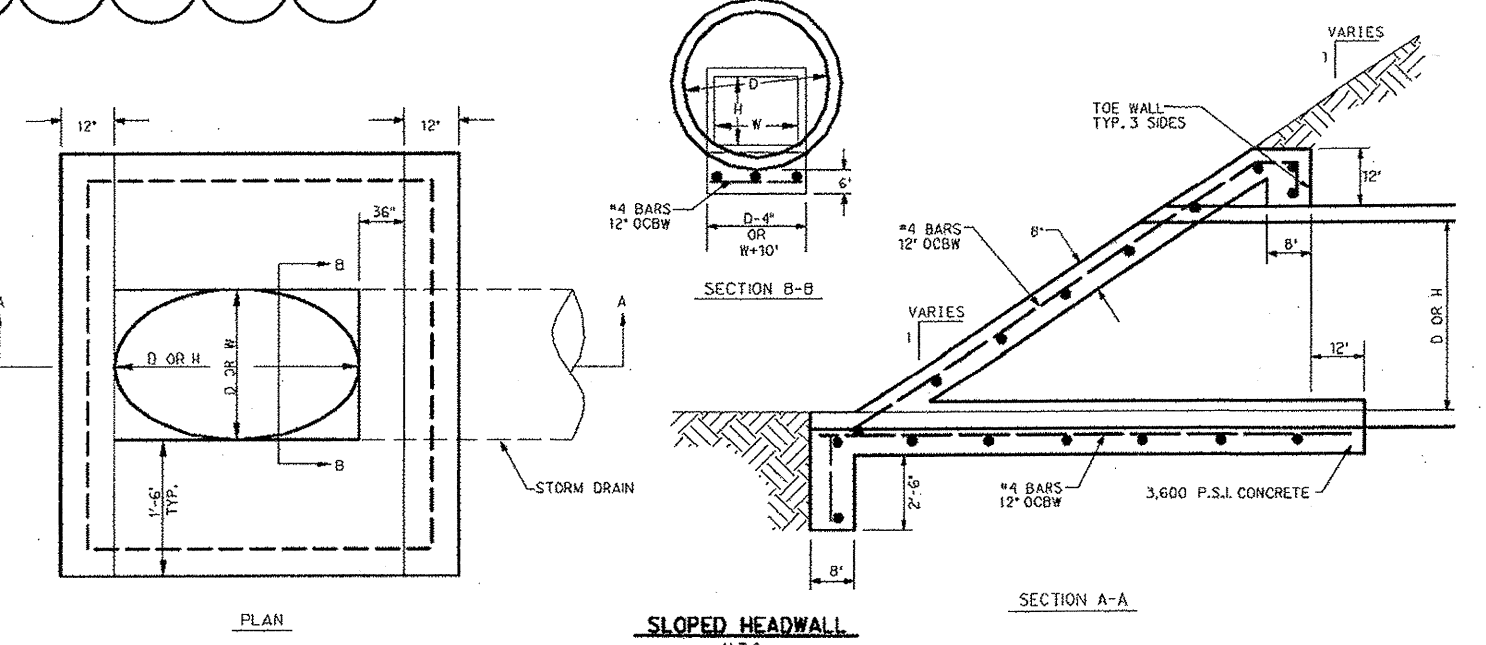
DATE: NOVEMBER 17, 2011
DESIGN: KHA
DRAWN: KHA
CHECKED: KHA
KHA NO.: 064362003
CITY NO.:

SHEET  
**C8**



**BENCH MARKS:**  
 BMS  
 SQUARE CUT ON INLET, SOUTHWEST CORNER OF RATLIFF LANE  
 AND ADDISON ROAD.  
 ELEVATION 637.20  
 BMB  
 SQUARE CUT ON INLET, SOUTHWEST CORNER OF AIRPORT PKWY.  
 AND QUORUM DRIVE.  
 ELEVATION 631.15  
 BMB  
 BRASS DISK FOUND AT NORTHWEST CORNER OF INLET, SOUTHWEST  
 CORNER OF KELLER SPRINGS AND ADDISON ROAD.  
 ELEVATION 638.91

**NOTES:**  
 1. REFER TO ARCHITECTS PLANS FOR ROOF DRAIN LOCATIONS  
 FOR ALL BUILDINGS. PLUMBING ENGINEER TO DESIGN  
 ROOF DRAINS.  
 2. SEE LANDSCAPE ARCHITECT PLANS FOR AREA DRAIN  
 LOCATIONS, PIPING AND SIZES IN OPEN SPACE AREAS  
 AND COURTYARDS.  
 3. PIPES UNDER BUILDING SLABS SHALL CONFORM TO  
 PLUMBING CODE REQUIREMENTS.



STA 0+62 LINE 'G'  
 STA 3+20.05 LINE 'H'  
 REMOVE & DISPOSE EXIST. HDWL.  
 INST. 4" DIA STD. MH.  
 TOP= 641.00  
 FL= 636.93

STA 0+00 LINE 'H'  
 REMOVE & DISPOSE EXIST. HDWL.  
 INST. 4" DIA STD. MH.  
 TOP= 640.34  
 FL= 637.85