

ELECTRICAL ABBREVIATIONS

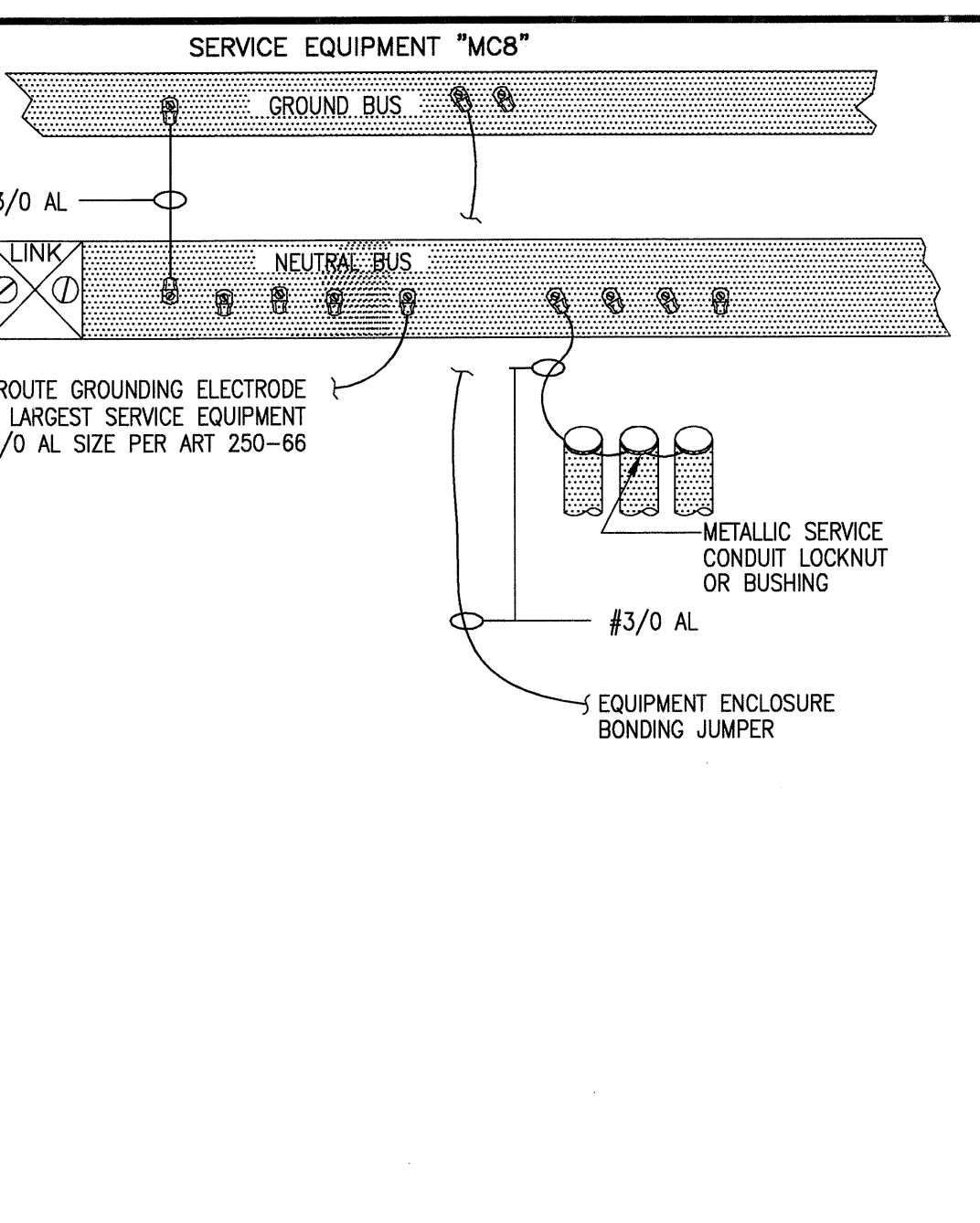
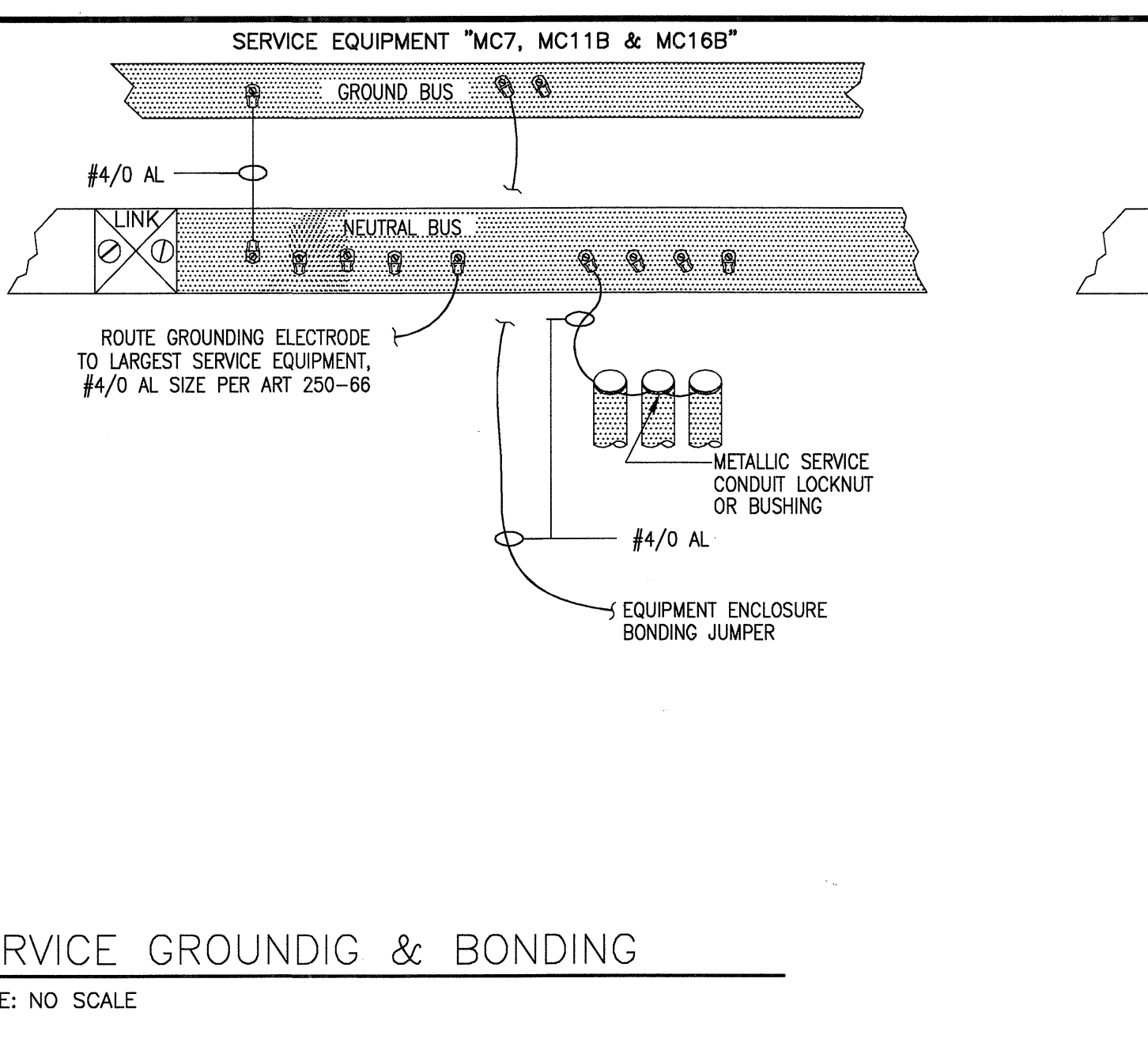
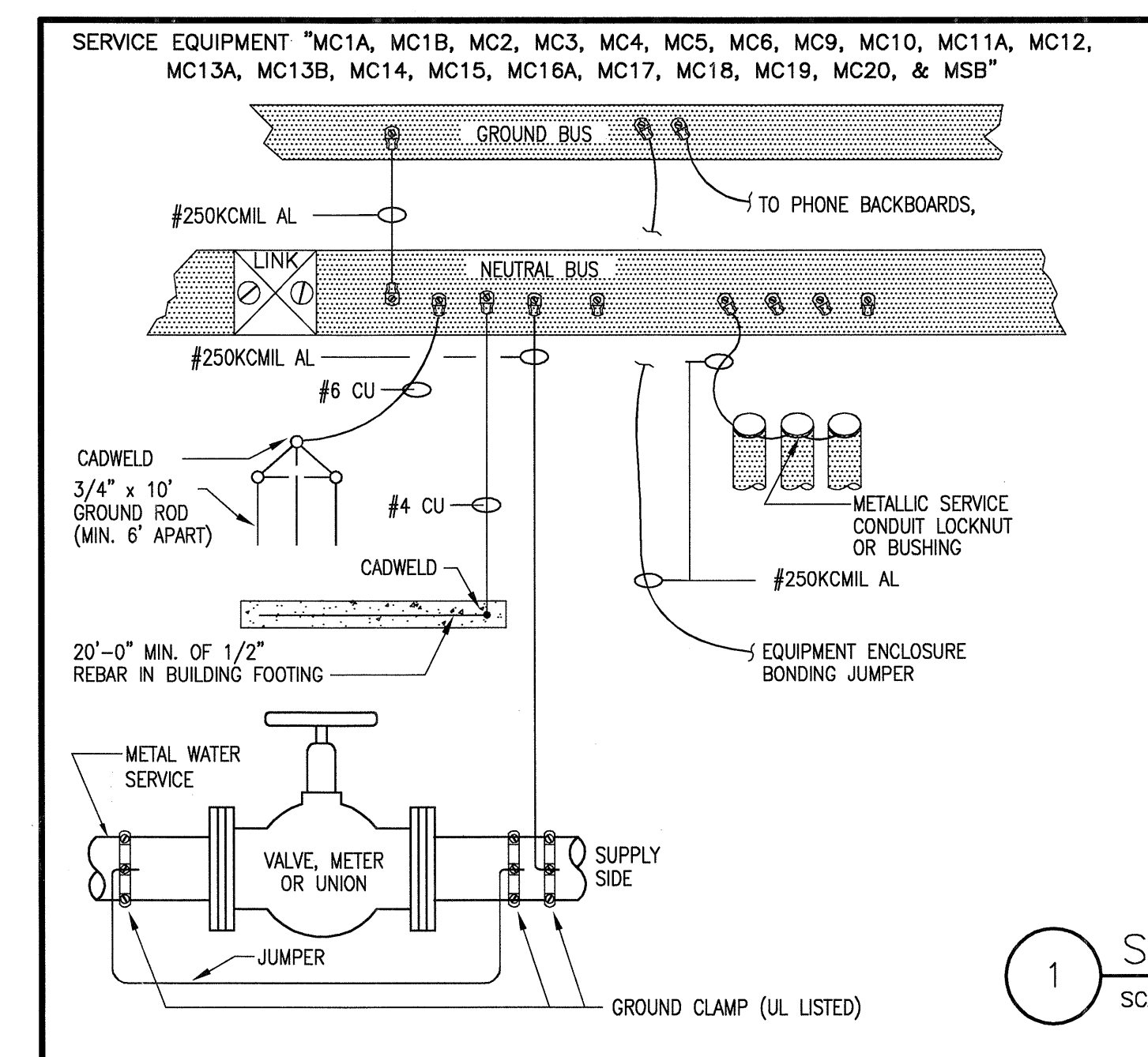
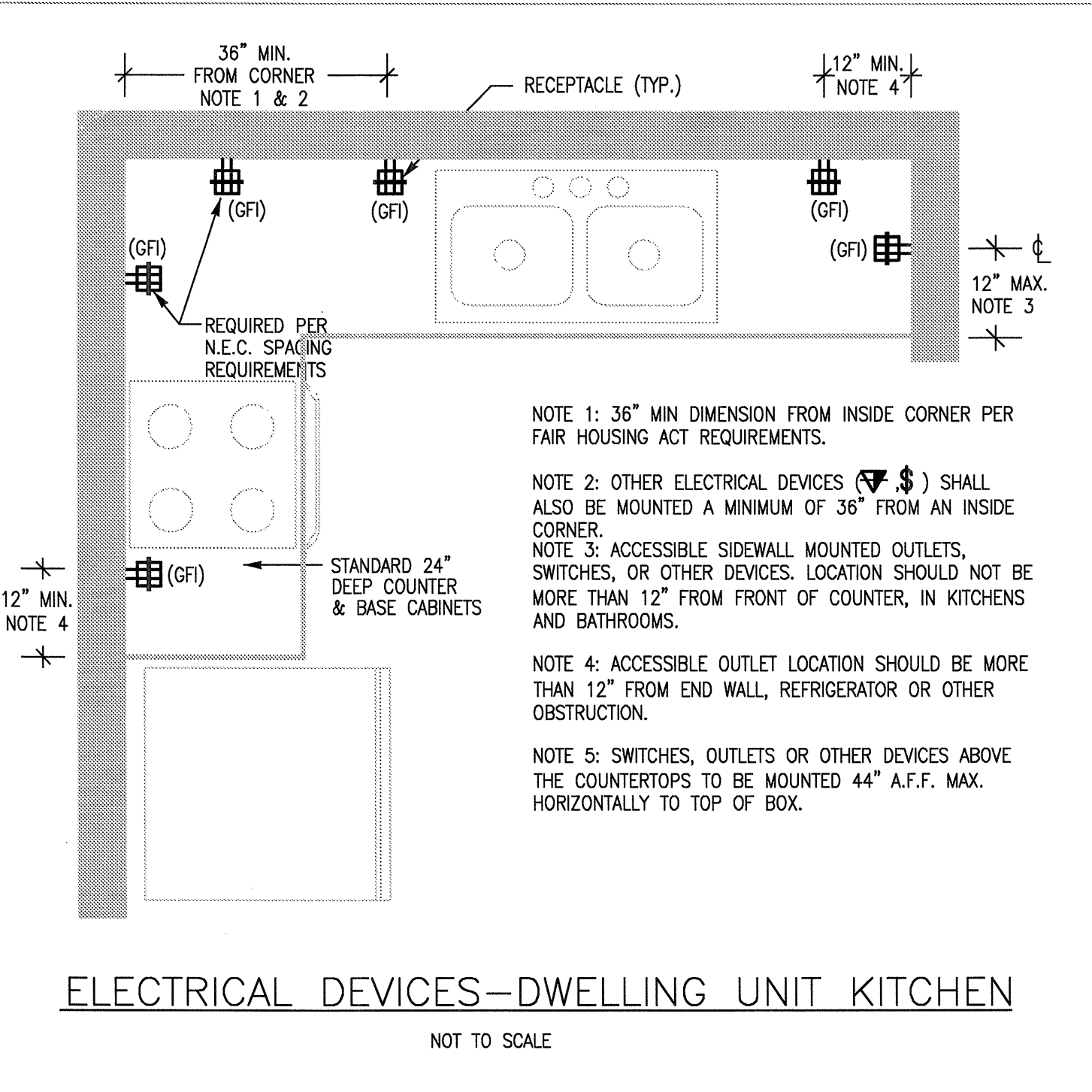
ABV AMPERE ABOVE	LED LIGHT EMITTING DIODE
AC ALTERNATING CURRENT	M MOTOR
AC ABOVE FINISHED FLOOR	MCB MAIN CIRCUIT BREAKER
AFF AMPERE INTERRUPTING CAPACITY	MCC MOTOR CONTROL CENTER
AIC ALUMINUM	MH METAL HALIDE
AL AMERICAN WIRE GAUGE	MLO MAIN LUGS ONLY
AWG BREAKER	MT MOUNT
BKR CONDUIT	MTG MOUNTING
C CIRCUIT BREAKER	NC NORMALLY CLOSED
CB CIRCUIT TELEVISION	NEC NATIONAL ELECTRICAL CODE
CCTV CLOSED CIRCUIT TELEVISION	NF NON-FUSED
CLG CEILING	NFPA NATIONAL FIRE PROTECTION ASSOCIATION
CT CURRENT TRANSFORMER	NIC NOT IN CONTRACT
CU COPPER	NL NIGHT LIGHT
DC DIRECT CURRENT	NO NORMALLY OPEN
DN DOWN	NTS NOT TO SCALE
E EMERGENCY	P POLE
EC ELECTRICAL CONTRACTOR	PBL PANELBOARD
EP EXPLOSIONPROOF	PVC POLYVINYL CHLORIDE
FA FIRE ALARM	RC REMOTE CONTROL
FACP FIRE ALARM CONTROL PANEL	RCP RECEPTACLE
FDR FEEDER	REF REFERENCE
FL FLOOR	RMS ROOT MEAN SQUARE
F FUSE OR FUSED	ST SHUNT-TRIP
FNVR FULL VOLTAGE NON REVERSING	SW SWITCH
GC GENERAL CONTRACTOR	SWBD SWITCHBOARD
GF1/GFCI GROUND FAULT CIRCUIT INTERRUPTER	SYM SYMMETRICAL
GRD GALVANIZED RIGID STEEL CONDUIT	TB TERMINAL BOX
G/GND GROUND	TEL TELEPHONE
HT HEIGHT	TV TELEVISION
HID HIGH INTENSITY DISCHARGE	UL UNDERGROUND
HP HORSEPOWER	UG UNDERWRITERS LABORATORIES
HDA HAND-OFF-AUTOMATIC	UNO UNLESS NOTED OTHERWISE
HZ HERTZ	V VOLTS
IG ISOLATED GROUND	V/A VOLT-AMPERE
ISO ISOLATED	W WATTS
JB JUNCTION BOX	WP WEATHERPROOF
K KILO, THOUSAND	XFMR TRANSFORMER
KMIL THOUSAND CIRCULAR MILS	Y WYE
KVA KILOVOLT-AMPERE	Z IMPEDANCE
KW KILOWATT		

ELECTRICAL GENERAL NOTES

- G-1 ALL EMERGENCY CIRCUITS SERVING NIGHT/EMERGENCY LIGHTING SHALL BE MINIMUM #10 AWG CONDUCTORS FOR THE ENTIRE CIRCUIT FOR 120 VOLT CIRCUITS OVER 100 FEET.
- G-2 WHEN CONDUCTOR OR CONDUIT SIZE IS INDICATED FOR BRANCH CIRCUIT HOMERUN, THE CONDUCTOR AND CONDUIT SIZE INDICATED SHALL BE USED FOR THE COMPLETE CIRCUIT.
- G-3 REFER TO THE APPROPRIATE DRAWINGS FOR THE EXACT LOCATION OF EQUIPMENT INSTALLED UNDER OTHER DIVISIONS OF THE DOCUMENTS WHICH REQUIRE ELECTRICAL SERVICE.
- G-4 CAPITAL LETTER BESIDE LIGHTING SYMBOL INDICATES FIXTURE TYPE. REFER TO LIGHTING FIXTURE SCHEDULE FOR FIXTURE SELECTION.
- G-5 EQUIPMENT GROUNDING CONDUCTORS ARE TO BE INCLUDED IN ALL RACEWAYS (WHERE APPLICABLE).
- G-6 FIRE ALARM SYSTEM SHALL CONFORM TO NFPA 72 AND LOCAL REQUIREMENTS. FIRE ALARM SYSTEM SHALL BE PREPARED, DESIGNED AND PERMITTED BY THIRD PARTY.
- G-7 REFER TO SPRINKLER FIRE PROTECTION SHOP DRAWINGS FOR ALL FLOW AND TAMPER SWITCH LOCATIONS AND CONNECTIONS FOR THE FIRE ALARM SYSTEM.
- G-8 PROVIDE PHOTOCELL, TIMELOCK AND CONTROL RELAYS TO CONTROL CORRIDOR LIGHTING IN EACH BUILDING. LOCATE TIMELOCK AND CONTACTORS ADJACENT TO HOUSE PANEL.
- G-9 PROVIDE ELECTRICAL DEVICES IN ALL APARTMENT UNITS AS SHOWN ON ELECTRICAL FLOOR PLANS. CIRCUIT THESE DEVICES PER THE PANEL SCHEDULE AND THE N.E.C.
- G-10 FEEDERS RUN BETWEEN BUILDINGS/STRUCTURES SHALL COMPLY WITH NEC ARTICLE 225.
- G-11 COORDINATE LOCATION OF TELEPHONE JUNCTION BOXES AND CATV SPLITTER BOXES WITH THE RESPECTIVE UTILITIES PRIOR TO BID/ROUGH-IN.
- G-12 BOND BUILDING ELECTRODE SYSTEM TOGETHER FOR MULTIPLE SERVICES AS PER NEC ARTICLE 250-54.
- G-13 IN UNITS WITH MULTIPLE STATION SMOKE DETECTORS, PROVIDE AUXILIARY CONTACTS IN ALL SMOKE DETECTORS REQUIRED FOR SYNCHRONOUS OPERATION WHEN ANY DETECTOR IS ACTIVATED. SMOKE DETECTORS TO BE (120V) WITH BATTERY BACK-UP. HARDWIRE SMOKE DETECTORS TO NEAREST UNSWITCHED RECEPTACLE CIRCUIT.
- G-14 CONTRACTOR SHALL NOT INSTALL ELECTRICAL OUTLET BOXES BACK-TO-BACK (IN SAME STUD SPACE) IN ONE HOUR RATED WALLS. MAINTAIN A MINIMUM OF 24" BETWEEN DEVICES.
- G-15 METERING SHALL COMPLY WITH LOCAL UTILITY REQUIREMENTS.
- G-16 BRANCH CIRCUITS FOR LIVING UNITS, BUILDING LIGHTS, ETC. SHALL BE COPPER. ALL FEEDERS SHALL BE ALUMINUM, U.N.O. (SERVICE ENTRANCES).
- G-17 PANELBOARD & LOAD CENTER BUSSING SHALL BE ALUMINUM.
- G-18 TYPE NM/SER CABLE SHALL BE PERMITTED UNLESS OTHERWISE PROHIBITED.
- G-19 ALL WIRE TERMINATIONS AND EQUIPMENT IS RATED FOR 75°C MINIMUM.
- G-20 ALL BRANCH CIRCUITS ARE #12 AWG UNLESS NOTED OTHERWISE. IT IS ACCEPTABLE TO USE #14 AWG FOR 15 AMP BRANCH CIRCUITS. PROVIDE #10 AWG FOR 25A AND 30A BRANCH CIRCUITS U.N.O. PROVIDE #8 AWG FOR 40A BRANCH CIRCUITS U.N.O. PROVIDE #6 AWG FOR 50A BRANCH CIRCUITS U.N.O. COORDINATE ALL WIRING WITH LOCAL REQUIREMENTS AND/OR A.H.I.
- G-21 CONTRACTOR SHALL PROVIDE LIGHTING IN ATTIC SPACE AS REQUIRED IN NEC 210-70(c)(3).
- G-22 CONTRACTOR SHALL FURNISH AND INSTALL RECEPTACLES FOR SERVICING MECHANICAL EQUIPMENT AS REQUIRED IN NEC ARTICLE 210-63.
- G-23 CONTRACTOR SHALL FURNISH AND INSTALL A JUNCTION BOX NEAR WATER HEATER FOR REMOTE MONITORING OF THE WATER METER.
- G-24 PROVIDE AN AUDIBLE/VISUAL FIRE ALARM DEVICE IN EACH HANDICAP LIVING UNIT.
- G-25 ELECTRICAL CONTRACTOR SHALL PROVIDE POWER TO ALL DETECTION DEVICES FOR HVAC EQUIPMENT INCLUDING SMOKE DETECTORS, FIRE STATS, MOTORIZED DAMPERS, ETC. AS REQUIRED. COORDINATE EXACT REQUIREMENTS WITH MECHANICAL CONTRACTOR.
- G-26 WHERE CIRCUIT BREAKERS OR FUSES ARE SERIES CONNECTED RATED, THE ENCLOSURE FOR THE OVERCURRENT DEVICES SHALL BE CLEARLY AND LEGIBLY MARKED IN THE FIELD TO INDICATE THE EQUIPMENT HAS BEEN APPLIED WITH A SERIES COMBINATION RATING. THE MARKING SHALL BE READILY VISIBLE AND STATE THE FOLLOWING: "CAUTION - SERIES COMBINATION SYSTEM RATED _____ AMPERES. IDENTIFIED REPLACEMENT COMPONENTS REQUIRED".
- G-27 ALL ELECTRICAL PENETRATIONS THROUGH FIRE-RATED ASSEMBLIES (WALLS, FLOORS, ROOFS, ETC.) SHALL BE ADEQUATELY FIRE-STOPPED USING UL LISTED MATERIALS AND METHODS.
- G-28 PROVIDE 120 VOLT POWER FOR MOTORIZED FIRE AND/OR FIRE/SMOKE DAMPERS AS REQUIRED, PER THE MECHANICAL DRAWINGS. CONNECT MAXIMUM OF FOUR (4) FIRE AND/OR FIRE/SMOKE DAMPERS ON A GIVEN 120 VOLT, 20 AMP BRANCH CIRCUIT. PROVIDE LOCK-ON CIRCUIT BREAKER(S) IN CORRESPONDING PANELBOARD(S) AS REQUIRED. COORDINATE QUANTITY, LOCATION, AND OTHER REQUIREMENTS WITH MECHANICAL CONTRACTOR AND PROVIDE AS NECESSARY FOR A COMPLETE AND OPERATIONAL FIRE AND/OR FIRE/SMOKE DAMPER SYSTEM THROUGHOUT THE PROJECT.
- G-29 PROVIDE AN EXTRA "HOT", UNSWITCHED CONDUCTOR IN EACH BRANCH CIRCUIT SERVING EXIT AND EMERGENCY/EGRESS LIGHTING SO THAT FIXTURES REMAIN ON/ACTIVE AT ALL TIMES.
- G-30 ELECTRICAL INSTALLATION SHALL COMPLY WITH THE 2009 IBC, 2009 IECC, AND 2008 NEC AND CITY OF ADDISON ELECTRICAL AMENDMENTS.

ELECTRICAL SYMBOL LEGEND

SYMBOL	DESCRIPTION	HEIGHT	SYMBOL	DESCRIPTION	HEIGHT
\$	SINGLE POLE SINGLE THROW TOGGLE SWITCH (NOTE L-1)	48"	⊙	POST TOP OR BOLLARD LIGHT FIXTURE	
\$/3/4	THREE-WAY TOGGLE SWITCH/FOUR-WAY TOGGLE SWITCH (NOTE L-1)	48"	⊙	CEILING/PENDANT MOUNTED PADDLE FAN	
\$M	MOTOR RATED SWITCH	48"	⊙	EXIT SIGN, CEILING/WALL MOUNTED. PROVIDE ARROWS AS INDICATED ON DRAWINGS	
\$K	KEYED SWITCH	48"	⊙	EMERGENCY LIGHTING FIXTURE	
\$T	TIMER SWITCH	48"	⊙	PANELBOARD - WALL MOUNTED (RECESSED)	
D	DIMMER SWITCH (NOTE L-1)	48"	⊙	PANELBOARD - WALL MOUNTED (SURFACE)	
D3	THREE-WAY DIMMER SWITCH (NOTE L-1)	48"	⊙	MOTOR	
⊕/⊕	DUPLEX / QUAD RECEPTACLE OUTLET (NOTE L-1)	18"	⊕	NONFUSIBLE DISCONNECT SWITCH, RATING/POLES/NEMA ENCLOSURE	
⊕/⊕	(*WP*=WEATHERPROOF, *GFI*=GROUND FAULT INTERRUPTER)	18"	⊕	FUSIBLE DISCONNECT SWITCH, RATING/POLES/NEMA ENCLOSURE/FUSE RATING	
⊕/⊕	G.F.C.I. DUPLEX RECEPTACLE OUTLET WALL/ABOVE COUNTER MOUNTED (NOTE L-1)	18"/43"	⊕	MAGNETIC MOTOR STARTER. NEMA SIZE RATING/ENCLOSURE (NEMA 1 IF NOT SHOWN)	
⊕	ISOLATED GROUND DUPLEX RECEPTACLE OUTLET	18"	⊕	COMBINATION MAGNETIC MOTOR STARTER AND DISCONNECT MEANS, NEMA SIZE RATING/ENCLOSURE (NEMA 1 IF NOT SHOWN)	
⊕	SPECIAL PURPOSE RECEPTACLE OUTLET, NEMA CONFIGURATION TO MATCH PLUG. (NOTE L-1)	18"	⊕	CURRENT TRANSFORMER CABINET	48"
⊕	SPLIT WIRED DUPLEX RECEPTACLE. ONE RECEPTACLE SHALL BE SWITCHED AS SHOWN ON PLANS (NOTE L-1)	18"	⊕	POWER METER AND SOCKET	
⊕/⊕	DUPLEX RECEPTACLE OUTLET, CEILING MOUNTED/FLOOR MOUNTED		⊕	FIRE ALARM MANUAL STATION	48"
⊕	MULTI-OUTLET ASSEMBLY WITH OUTLETS ON CENTERS AS INDICATED IN NOTES OR SPECIFICATIONS MOUNT 6" ABOVE COUNTER OR AS INDICATED		⊕	FIRE ALARM HORN/SPEAKER WITH VISUAL DEVICE (NOTE L-3), NUMERAL INDICATES CANDELA RATING	
⊕	FIRE-RATED POKE-THRU DEVICE		⊕	FIRE ALARM HORN/SPEAKER (NOTE L-3)	
⊕/⊕	JUNCTION BOX, CEILING/WALL/FLOOR MOUNTED		⊕	FIRE ALARM VISUAL DEVICE (NOTE L-3), NUMERAL INDICATES CANDELA RATING	
⊕	ARROWHEAD INDICATES HOMERUN. X-1,3,5 ADJACENT TO HOMERUN. ARROWHEADS INDICATES HOMERUN TO PANEL X CIRCUIT NUMBERS 1,3, AND 5.		⊕	FIREMAN PHONE JACK	
⊕	INDICATES CIRCUIT CONTINUATION OF CIRCUITS 3 AND 5 OF PANEL X.		⊕	FIRE PHONE	
⊕	MARKS ACROSS RACEWAY SYMBOLS INDICATE THE NUMBER OF #12 CONDUCTORS (2 PHASE, 1 NEUTRAL) UNLESS OTHERWISE NOTED. NO MARKS INDICATES TWO #12 CONDUCTORS. EQUIPMENT GROUNDING CONDUCTORS ARE NOT INDICATED BY MARKS.		⊕	SMOKE DETECTOR (CEILING/WALL MOUNTED 4" MIN. AND 12" MAX. FROM CEILING)	
⊕	RACEWAY/CABLE CONCEALED IN WALL AND/OR ABOVE CEILING		⊕	THERMAL DETECTOR, CEILING MOUNTED	
⊕	RACEWAY CONCEALED BELOW GRADE OR IN-SLAB		⊕	CONNECTION TO FIRE PROTECTION SYSTEM FLOW SWITCH	
⊕	RACEWAY/CABLE CONCEALED IN WALL AND/OR ABOVE CEILING - EMERGENCY CIRCUIT		⊕	CONNECTION TO FIRE PROTECTION SYSTEM TAMPER SWITCH	
⊕	RACEWAY INSTALLED EXPOSED		⊕	FIRE ALARM CONNECTION TO SMOKE/FIRE DOOR HOLD-OPEN DEVICE	
⊕	GROUNDING CONNECTION (SYSTEM AND/OR EQUIPMENT)		⊕	DUCT MOUNTED SMOKE DETECTOR	
⊕	CONDUIT TURNING UP/DOWN		⊕	REMOTE STATION FOR DUCT MOUNTED SMOKE DETECTOR	
⊕	CONDUIT STUB. TERMINATE IN INSULATED BUSHING OR CAP IF UNDERGROUND		⊕	FIRE ALARM CONTROL PANEL, SURFACE/RECESSED	
⊕	FLUORESCENT LIGHTING FIXTURE, 2X4, 1X4, 2X2		⊕	FIRE ALARM ANNUNCIATOR PANEL, RECESSED	
⊕	FLUORESCENT LIGHTING FIXTURE, 2X4, 1X4, 2X2 - PROVIDING EMERGENCY ILLUMINATION		⊕	TELEPHONE OUTLET, WALL MOUNTED/ABOVE COUNTER (NOTES L-1, L-2)/FLOOR MOUNTED	18"/43"
⊕	LIGHTING FIXTURE - OVERHEAD/WALL MOUNTED		⊕	COMBINATION TELEPHONE/DATA OUTLET, WALL MOUNTED/ABOVE COUNTER (NOTE L-1, L-2)/FLOOR MOUNTED	18"/43"
⊕	EMERGENCY LIGHTING FIXTURE - OVERHEAD/WALL MOUNTED		⊕	DATA OUTLET, WALL MOUNTED/ABOVE COUNTER (NOTE L-1, L-2)/FLOOR MOUNTED	18"/43"
⊕	FLUORESCENT STRIP FIXTURE - OVERHEAD/WALLMOUNTED		⊕	TELEVISION OUTLET WALL MOUNTED (NOTE L-1)/CEILING MOUNTED/FLOOR MOUNTED	18"
⊕	DIRECTIONAL OR WALL WASH LIGHTING FIXTURE				
⊕	LIGHT TRACK AND LIGHT TRACK FIXTURES				
⊕	POLE MOUNTED LIGHT FIXTURE WITH ARM. SEE PLANS FOR NUMBER OF LUMINAIRES.				

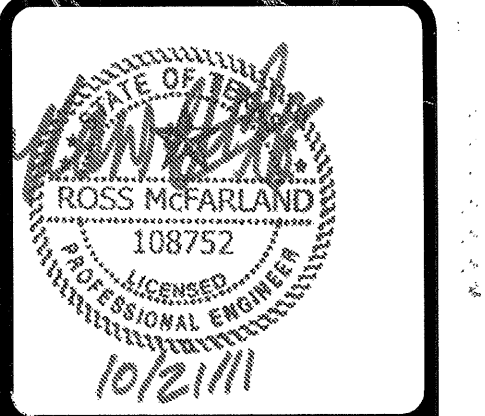


1 SERVICE GROUNDING & BONDING
SCALE: NO SCALE

UNIT LIGHTING FIXTURE SCHEDULE							
KEY	TYPE	MANUFACTURER	CONTACT	STYLE	NUMBER	LAMPING	LOCATION
L-U1	TRACK	ROYAL PACIFIC	KIM DUDLEY / DESIGN PARTNERS 817.808.1944	7936 TRACK PACK	7936BA	(3) PAR 30	KITCHEN/DINING
L-U2	CEILING MOUNT	EPIPHANY	KIM DUDLEY / DESIGN PARTNERS 817.808.1944	DECORATIVE CEILING DOME	1043648N	(1) 60W A19	GALLERY/ENTRY/HALLWAY
L-U3	FAN	ROYAL PACIFIC	KIM DUDLEY / DESIGN PARTNERS 817.808.1944	1059 ROYAL PACK	1059BP/LIGHT KIT LK1RP8BP	(2) 60W A19	LIVING ROOM/ BEDROOM
L-U4	CEILING MOUNT	EPIPHANY	KIM DUDLEY / DESIGN PARTNERS 817.808.1944	DECORATIVE BALL LIGHT	104000BN	(1) 60W	CLOSETS
L-U6	CEILING MOUNT	EPIPHANY	KIM DUDLEY / DESIGN PARTNERS 817.808.1944	MUSHROOM CEILING LITE	104210BN	60W A19 CL	BATHROOM CEILING
L-U7	RECESSED	CONTRACTOR'S CHOICE	KIM DUDLEY / DESIGN PARTNERS 817.808.1944	CONTRACTOR'S CHOICE	CONTRACTOR'S CHOICE	(1) 40W A19 CL	SHOWER/TUB
L-U8	PATIO SCENCE	EPIPHANY	KIM DUDLEY / DESIGN PARTNERS 817.808.1944	CAST ALUMINUM OUTDOOR	104790BK	(1) 60W	PATIO

NOTES:

- FINAL FIXTURE SELECTIONS TO BE SUBMITTED TO AND APPROVED BY OWNER.
- ALL LIGHTING FIXTURES MAY NOT NECESSARILY BE USED.
- PROVIDE ALL NECESSARY HARDWARE AND ACCESSORIES REQUIRED TO MAINTAIN THE FIRE RATING AND/OR FIREPROOF INTEGRITY OF CEILINGS, WALLS, SURFACES, ETC. TO/ON/IN WHICH FIXTURES ARE INSTALLED.
- ALL OUTDOOR FIXTURES SHALL BE DAMP AND/OR WET LOCATION LISTED (AS APPLICABLE TO INSTALLATION) AND SHALL BE PROVIDED WITH OF, COLD WEATHER BALLASTS (FLUORESCENT AND HID FIXTURES).
- UNDERCABINET AND COVE FIXTURE LENGTHS TO BE PROVIDED TO RUN THE LENGTH OF REQUIRED SPACE WITH MINIMUM NUMBER OF FIXTURES.
- ANY DISCREPANCIES ON FIXTURES BETWEEN THESE PLANS AND THE OWNER'S SUBMITTED SPECIFICATIONS, THE OWNER'S SPECIFICATIONS SHALL TAKE PRIORITY.



REVISIONS	
9-2-2011	DESIGN REVISIONS
9-13-2011	ANSI/FHA COMMENTS
9-23-2011	DESIGN REVISIONS
10-17-2011	CONSTRUCTION ISSUE

KELLER SPRINGS LOFTS
LOFT APARTMENTS IN ADDISON, TEXAS



4144 N. Central Expy. Suite 855
Dallas, TX 75204
214.520.8878
bgoarchitects.com

DATE: 08-05-11

PROJECT: 11129

SHEET NUMBER: E-1.0

NOTES & LEGENDS