

REVISIONS	
1	9-2-2011 DESIGN REVISIONS
2	9-13-2011 ANSI/FHA COMMENTS
3	9-23-2011 DESIGN REVISIONS
4	10-17-2011 CONSTRUCTION ISSUE

# KELLER SPRINGS LOFTS

LOFT APARTMENTS IN ADDISON, TEXAS

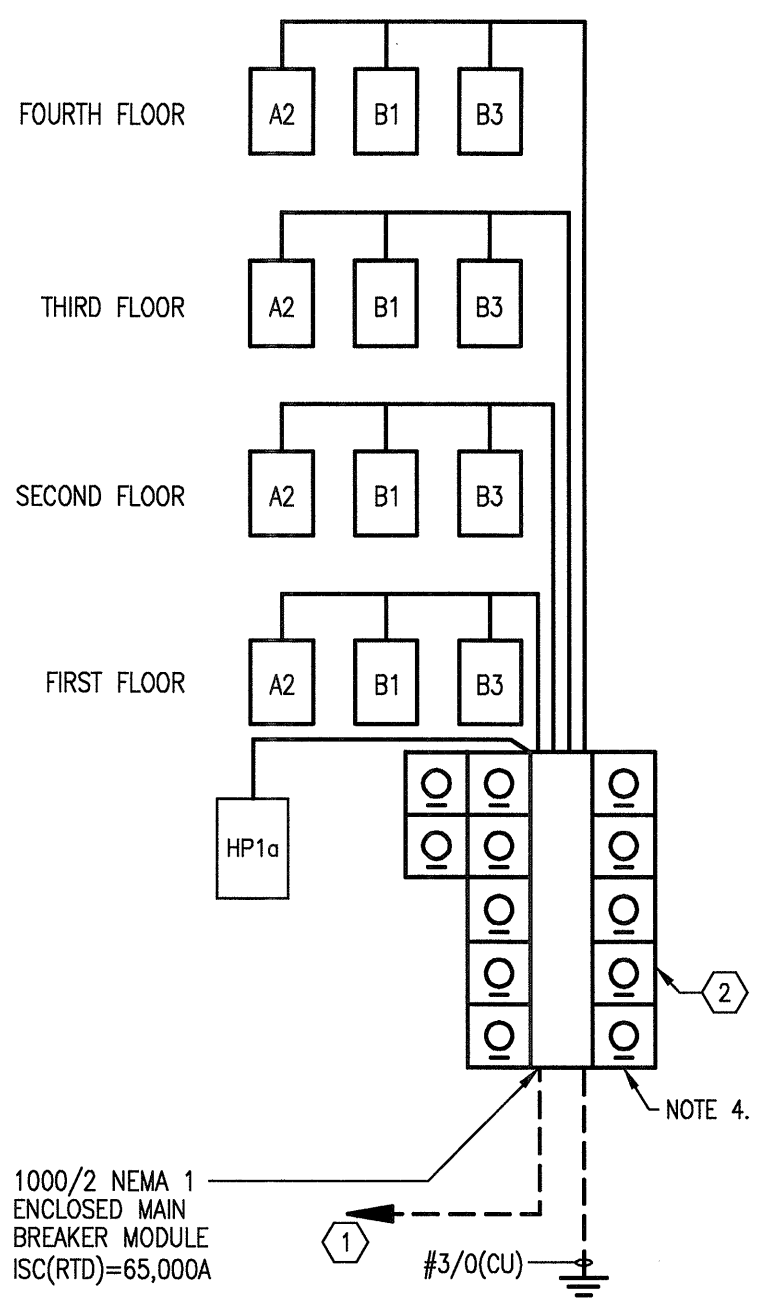
**BGO**  
architects  
4144 N. Central Expy.  
Suite 855  
Dallas, TX 75204  
214.520.8878  
bgoarchitects.com

DATE  
08-05-11

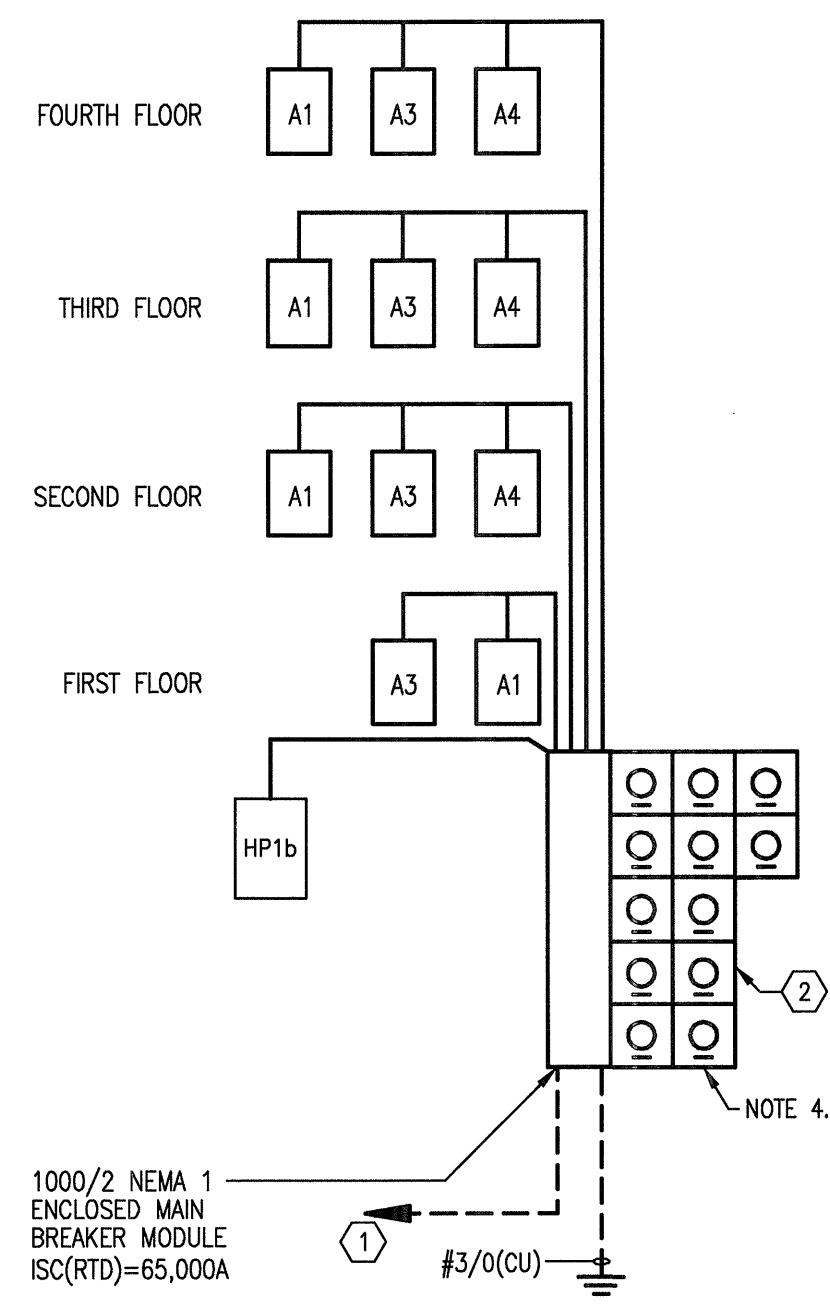
PROJECT  
11129

SHEET NUMBER  
**E-1.1**

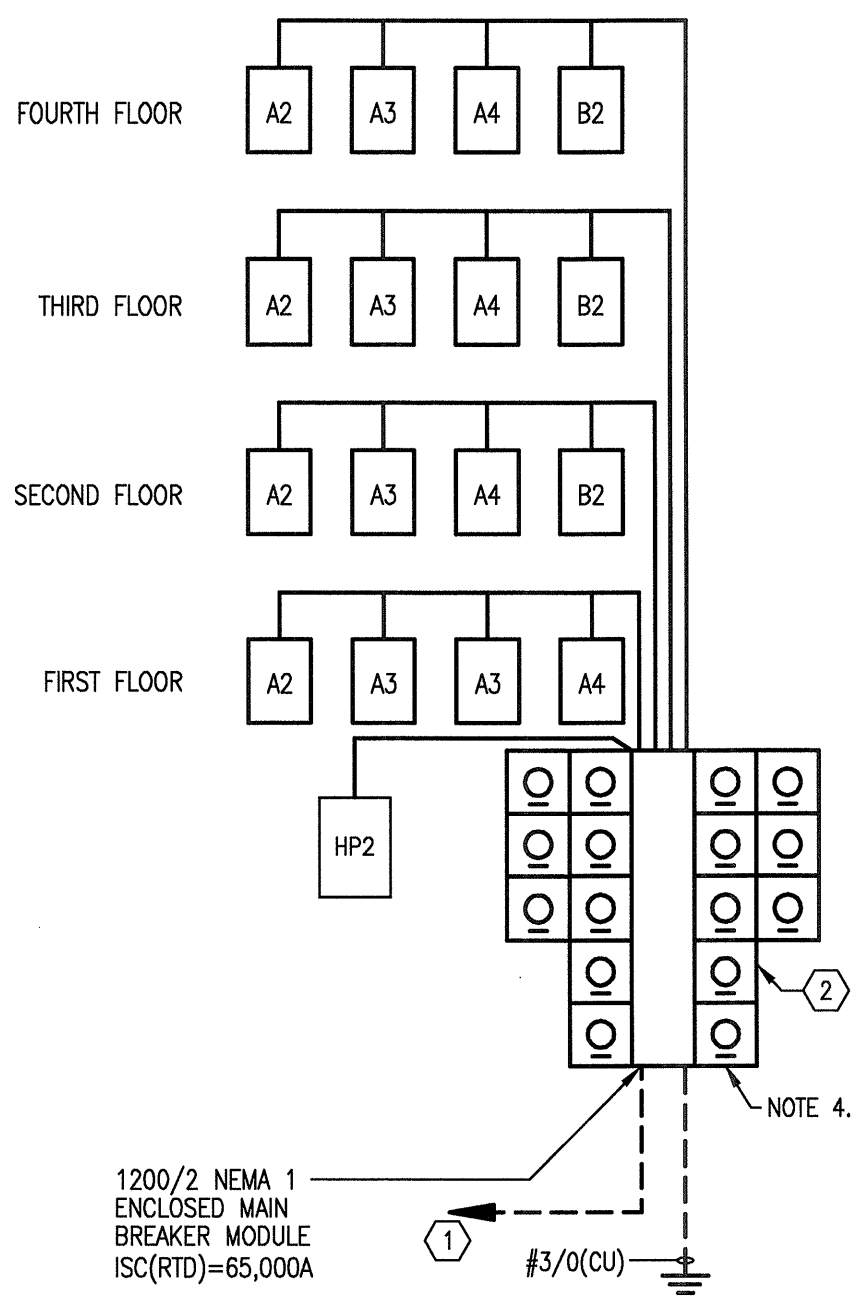
**RISERS**



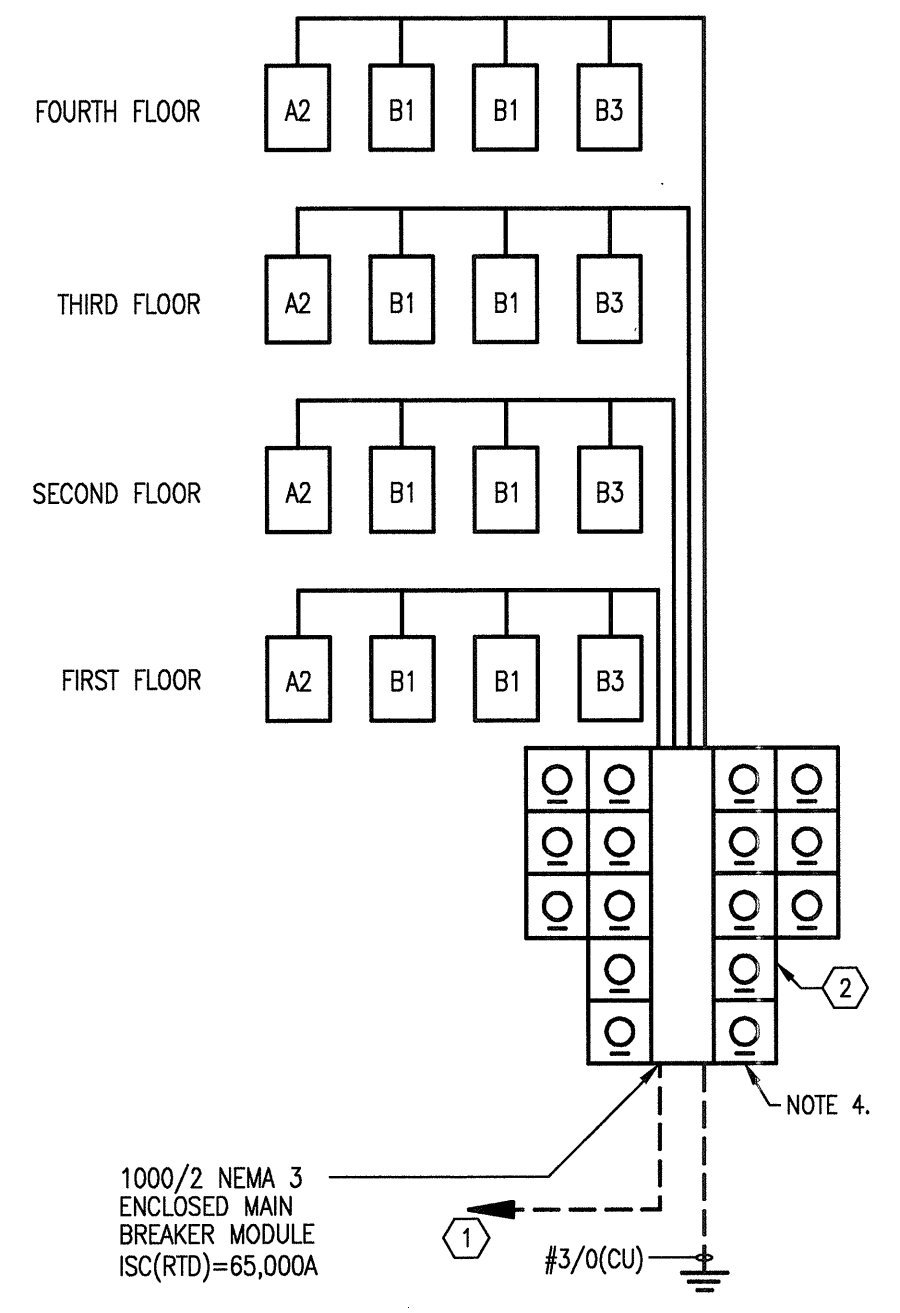
**1 METER CENTER 1a**  
SCALE, NOT TO SCALE



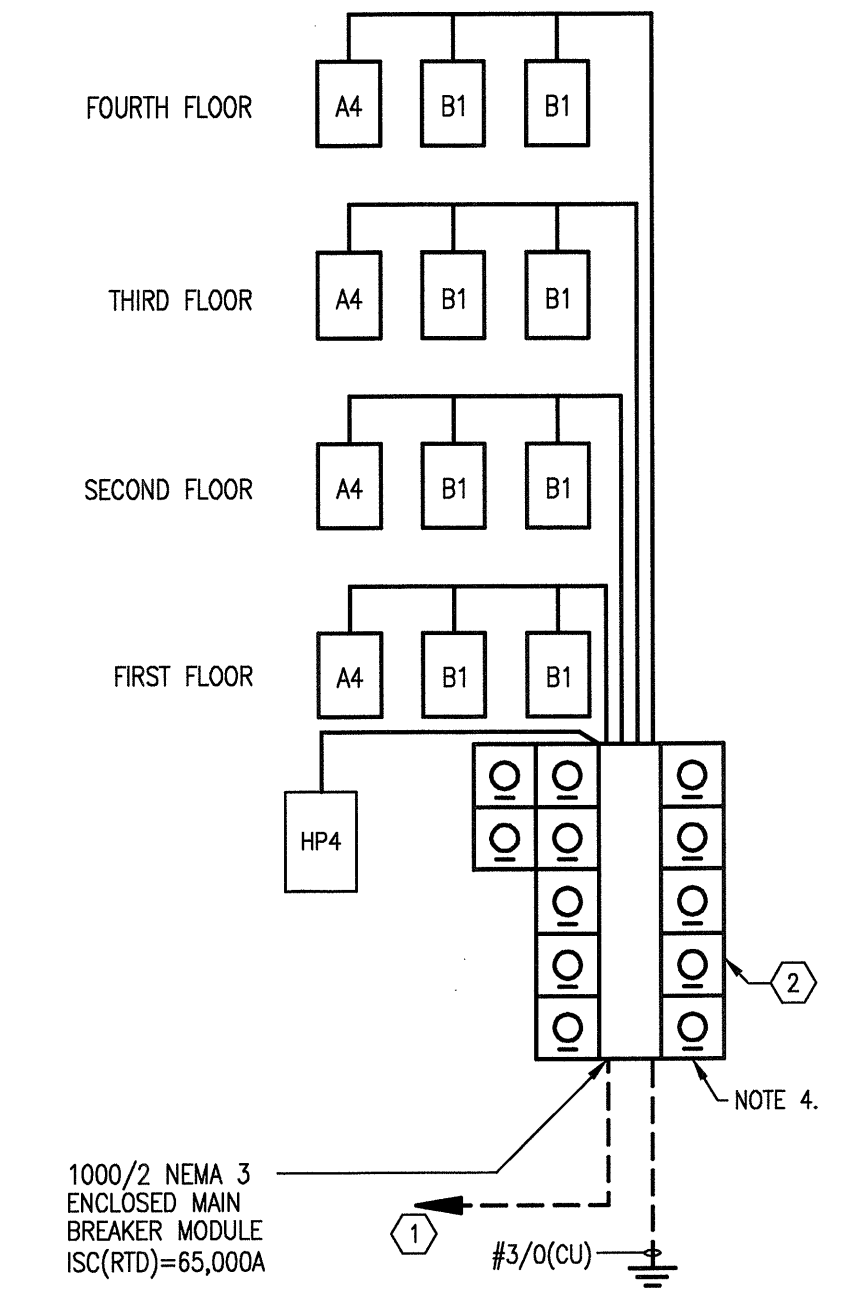
**2 METER CENTER 1b**  
SCALE, NOT TO SCALE



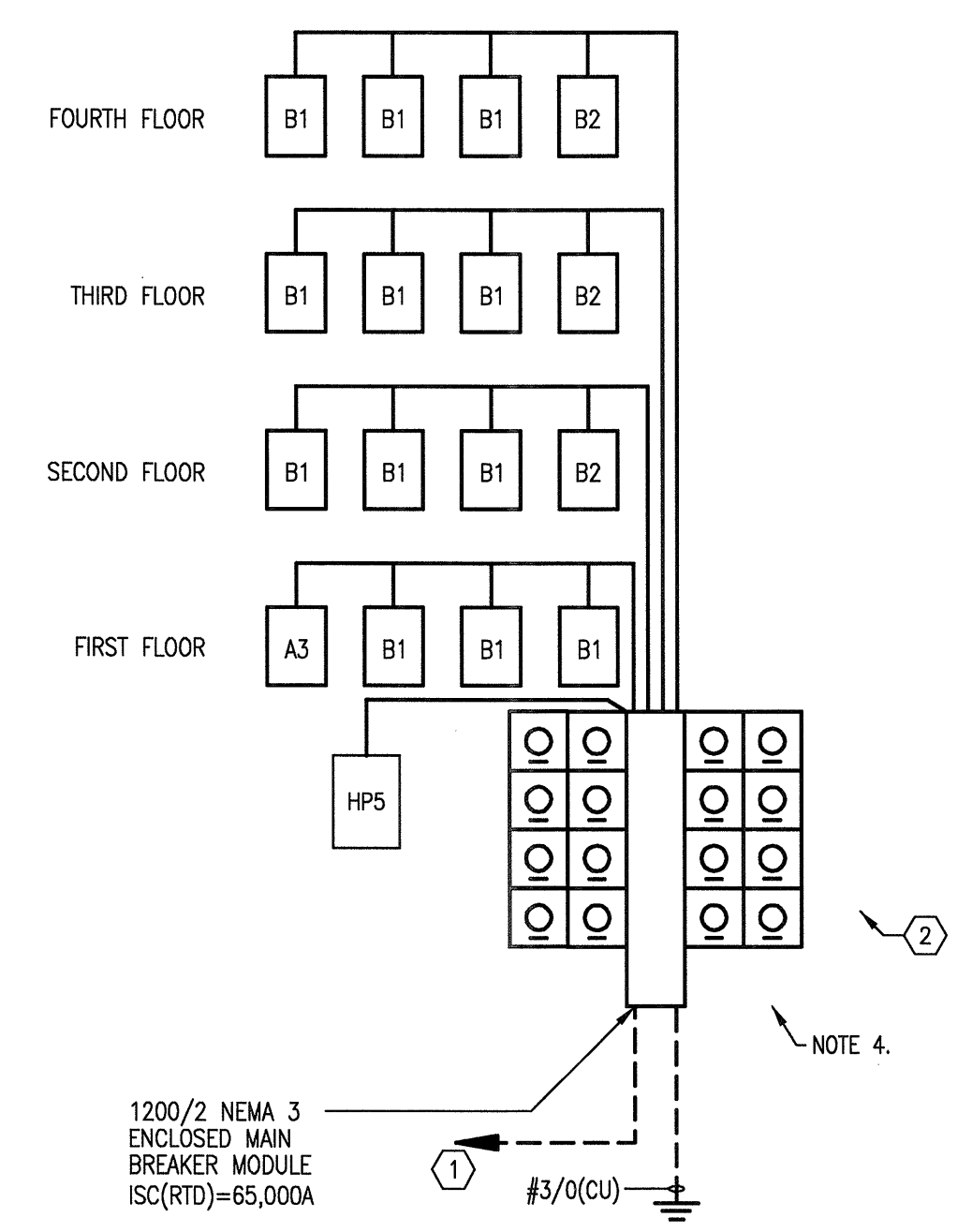
**3 METER CENTER 2**  
SCALE, NOT TO SCALE



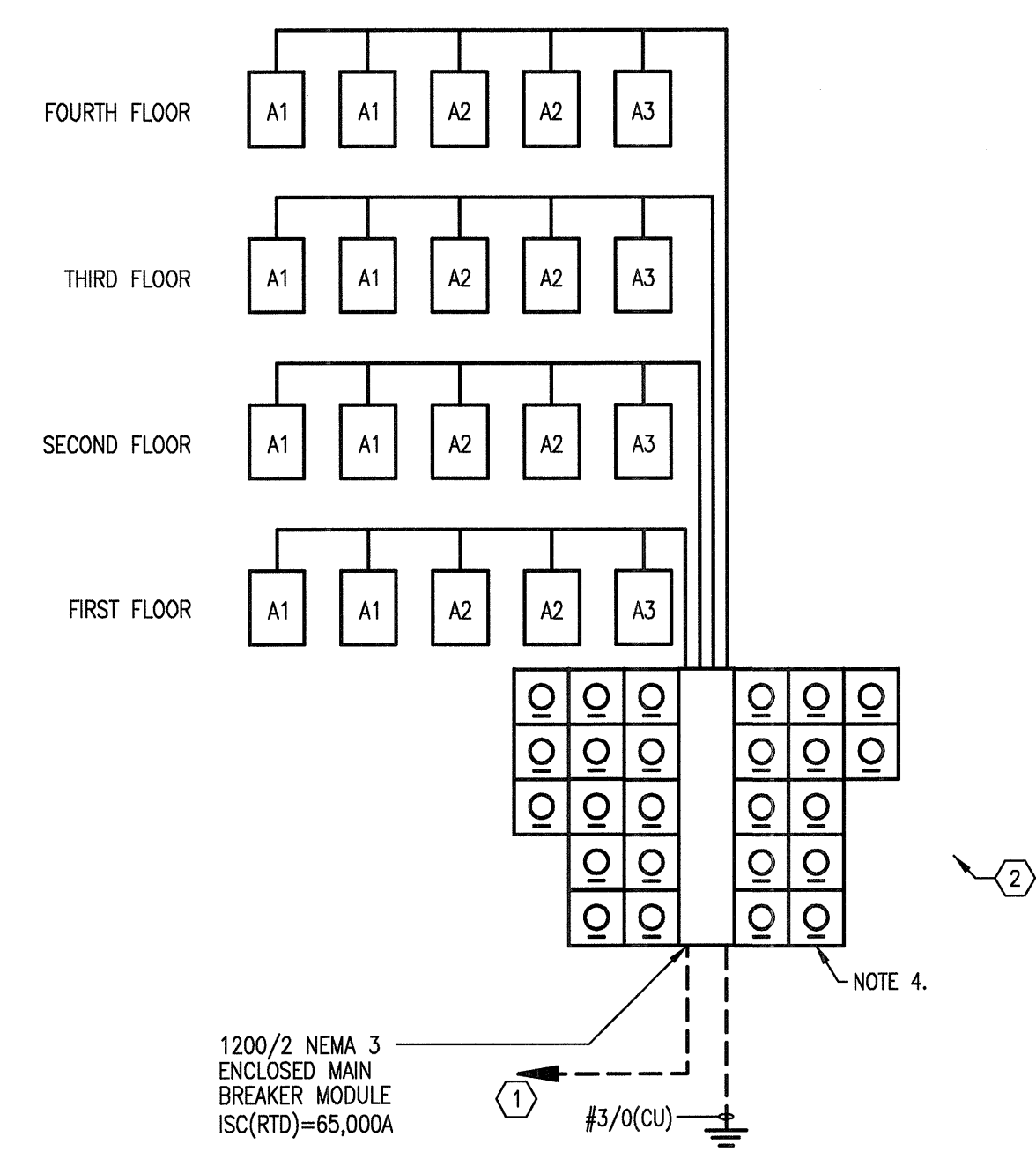
**4 METER CENTER 3**  
SCALE, NOT TO SCALE



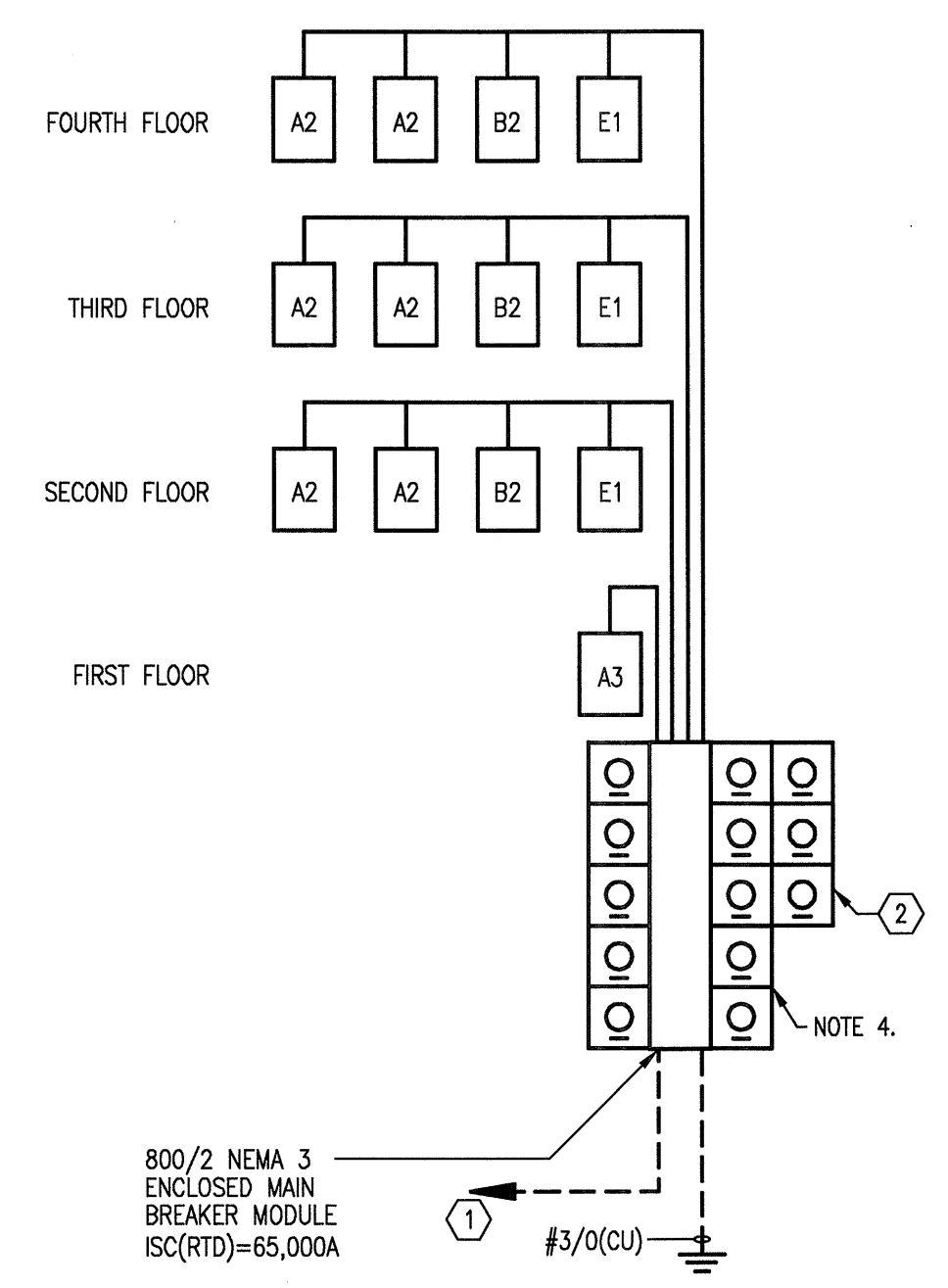
**5 METER CENTER 4**  
SCALE, NOT TO SCALE



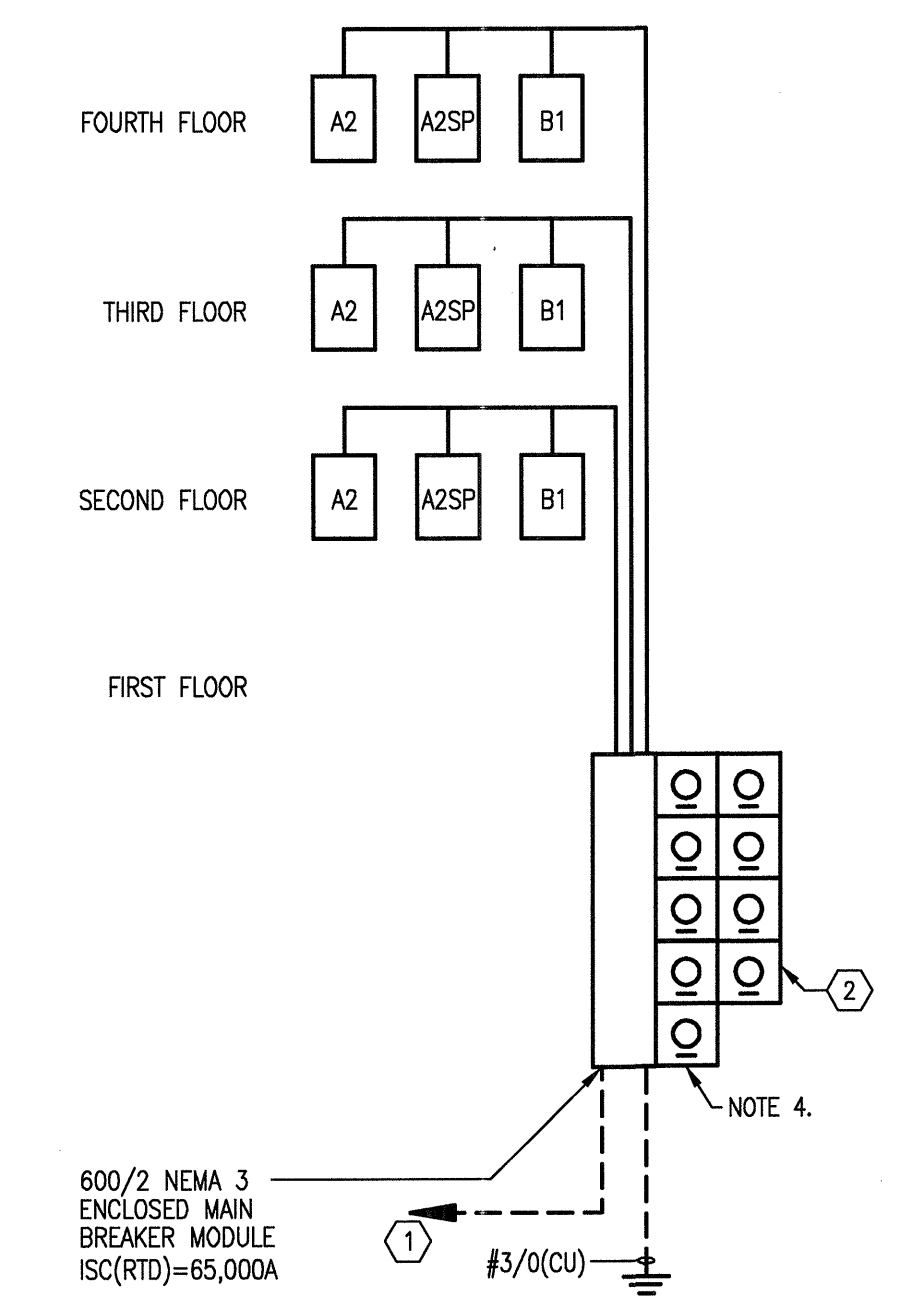
**6 METER CENTER 5**  
SCALE, NOT TO SCALE



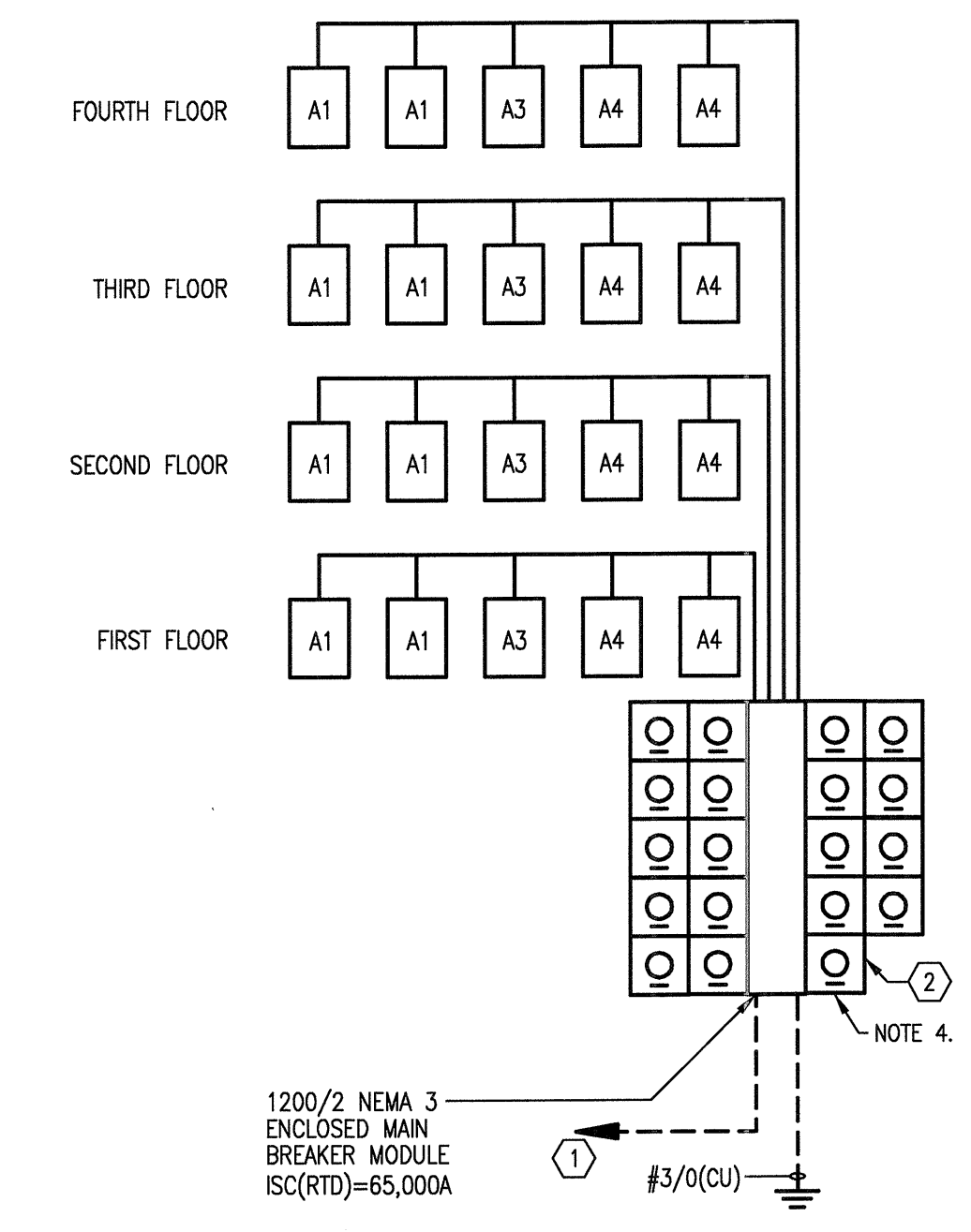
**7 METER CENTER 6**  
SCALE, NOT TO SCALE



**8 METER CENTER 7**  
SCALE, NOT TO SCALE



**9 METER CENTER 8**  
SCALE, NOT TO SCALE



**10 METER CENTER 9**  
SCALE, NOT TO SCALE

**GENERAL NOTES:**

- THE 10 KAIC BREAKERS IN THE LOAD CENTERS AND THE 22 KAIC BREAKERS AT THE METERS SHALL BE SERIES RATED WITH THE 65 KAIC MAIN SERVICE BREAKERS FOR 65 KAIC PROTECTION AT THE LOAD CENTER AND METER. METER CENTERS AND LOAD CENTERS SHALL BE U.L. LISTED AND LABELED FOR THIS PURPOSE.
- CONTRACTOR SHALL PROVIDE A PLAQUE AT EACH SERVICE LOCATION DENOTING LOCATION FOR ALL OTHER SERVICES AT EACH BUILDING.

**KEY NOTES:**

- NOTE THAT POWER COMPANY PAD-MOUNTED TRANSFORMERS CAN ACCEPT A LIMITED NUMBER OF SECONDARY CONDUITS, THEREFORE, PROVIDE SERVICE ENTRANCE LATERALS AS FOLLOWS:  
600A METER CENTER: (2 SETS) 3 #500MCM (AL, S.E.R.); 600A MAIN BREAKER.  
800A METER CENTER: (3 SETS) 3 #400MCM (AL, S.E.R.); 800A MAIN BREAKER.  
1000A METER CENTER: (3 SETS) 3 #600MCM (AL, S.E.R.); 1000A MAIN BREAKER.  
1200A METER CENTER: (4 SETS) 3 #500MCM (AL, S.E.R.); 1200A MAIN BREAKER.  
1600A METER CENTER: (4 SETS) 3 #600MCM (AL, S.E.R.); 1600A MAIN BREAKER.
- CONTRACTOR SHALL FURNISH AND INSTALL U.L. LISTED, SERIES CONNECTED RATED, CURRENT LIMITING CIRCUIT BREAKERS WITH AMPERE RATINGS INDICATED. BREAKER SHALL BE TESTED TO PROTECT DOWNSTREAM EQUIPMENT AT RATINGS INDICATED.
- PROVIDE 240 VOLT, 1-PHASE MAINS AND HOUSE PANELS, WITH SINGLE-PHASE, 240 VOLT SERVICE TO INDIVIDUAL UNITS. USE TO COORDINATE ENTIRE SERVICE ENTRANCE INSTALLATION WITH POWER COMPANY, BUILDING OFFICIAL(S), AND/OR LOCAL (ELECTRICAL) AHI.

**JSE** Jordan & Skala Engineers  
14240 Midway Road, Suite 310  
Dallas, TX 75244-0138  
Tel: 469.383.1616, Fax: 469.383.1615  
Project Number - 113-0355 Texas Firm Registration # F-4990  
Drawn By: MJ Checked By: RAD