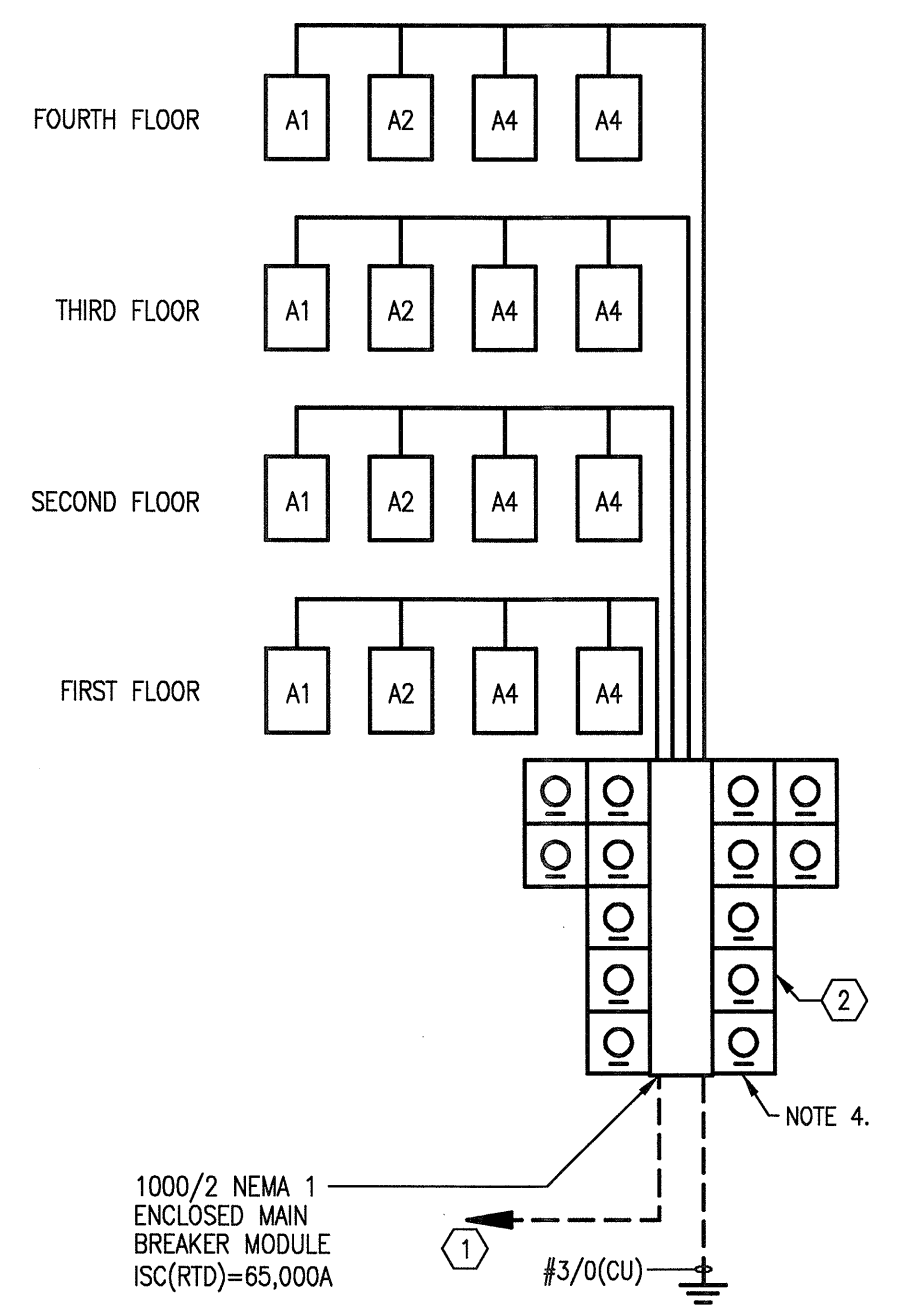


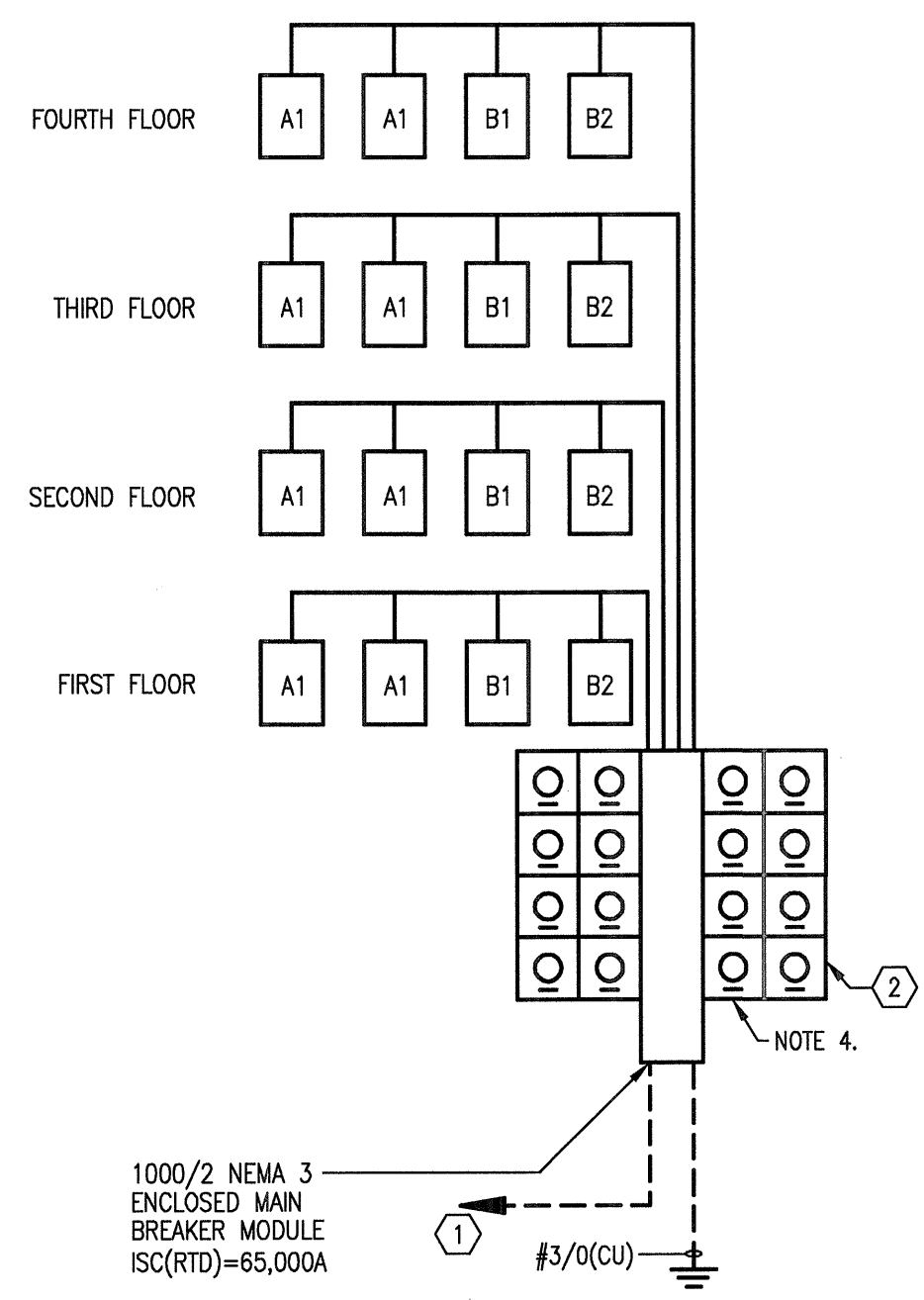


REVISIONS	
1	9-2-2011 DESIGN REVISIONS
2	9-13-2011 ANSI/FHA COMMENTS
3	9-23-2011 DESIGN REVISIONS
4	10-17-2011 CONSTRUCTION ISSUE

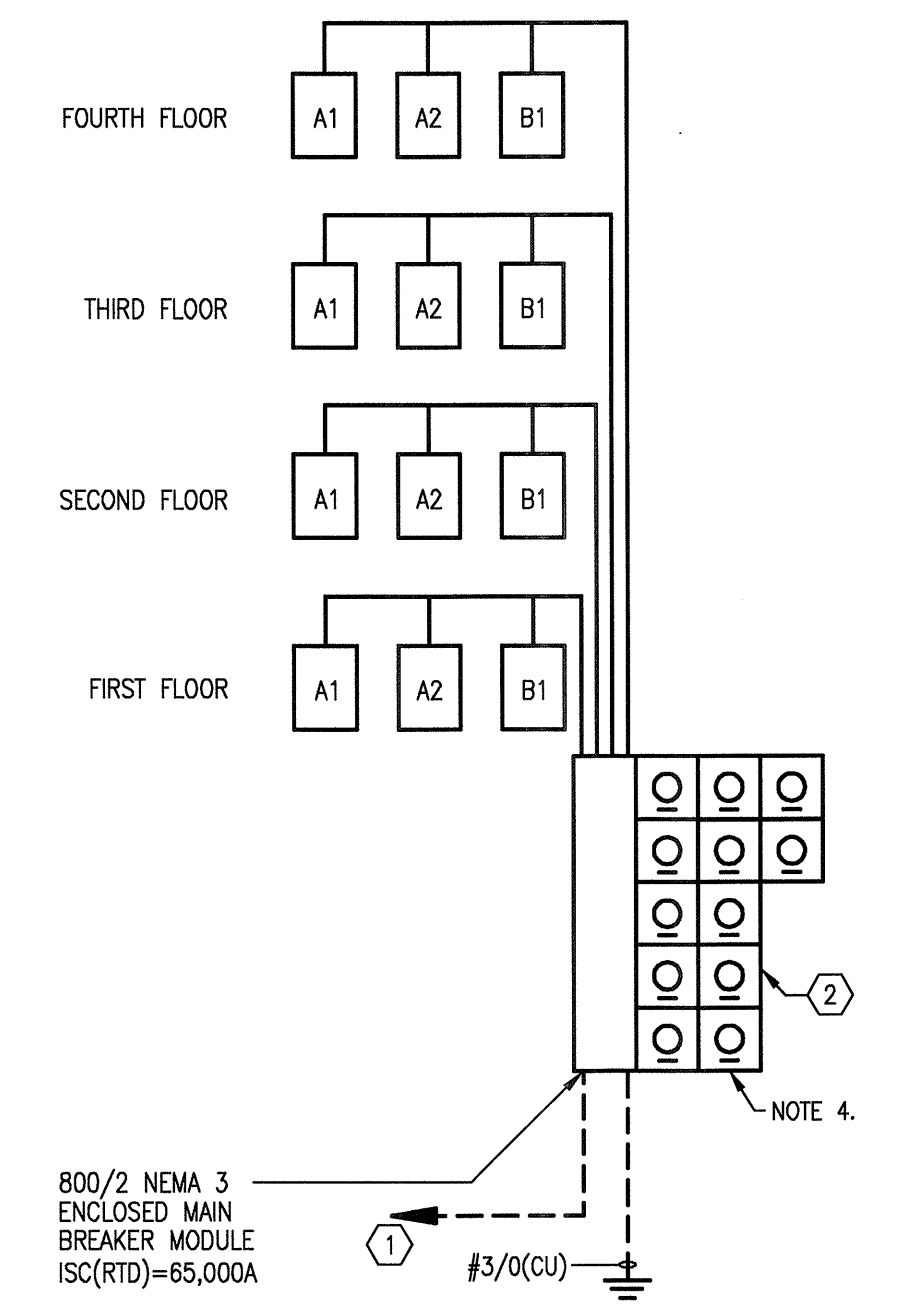
**KELLER SPRINGS LOFTS**  
 LOFT APARTMENTS IN ADDISON, TEXAS



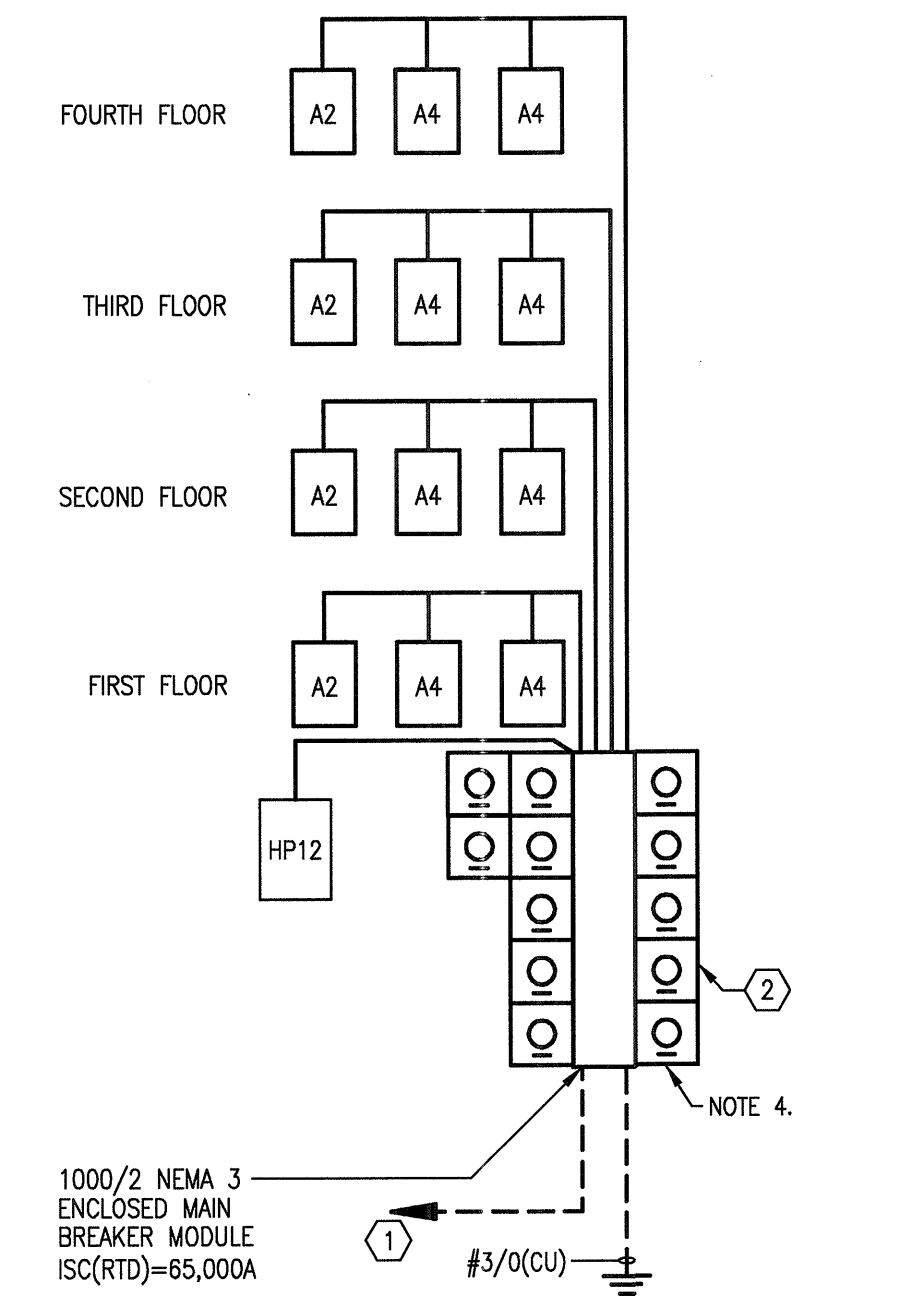
**1 METER CENTER 10**  
SCALE: NOT TO SCALE



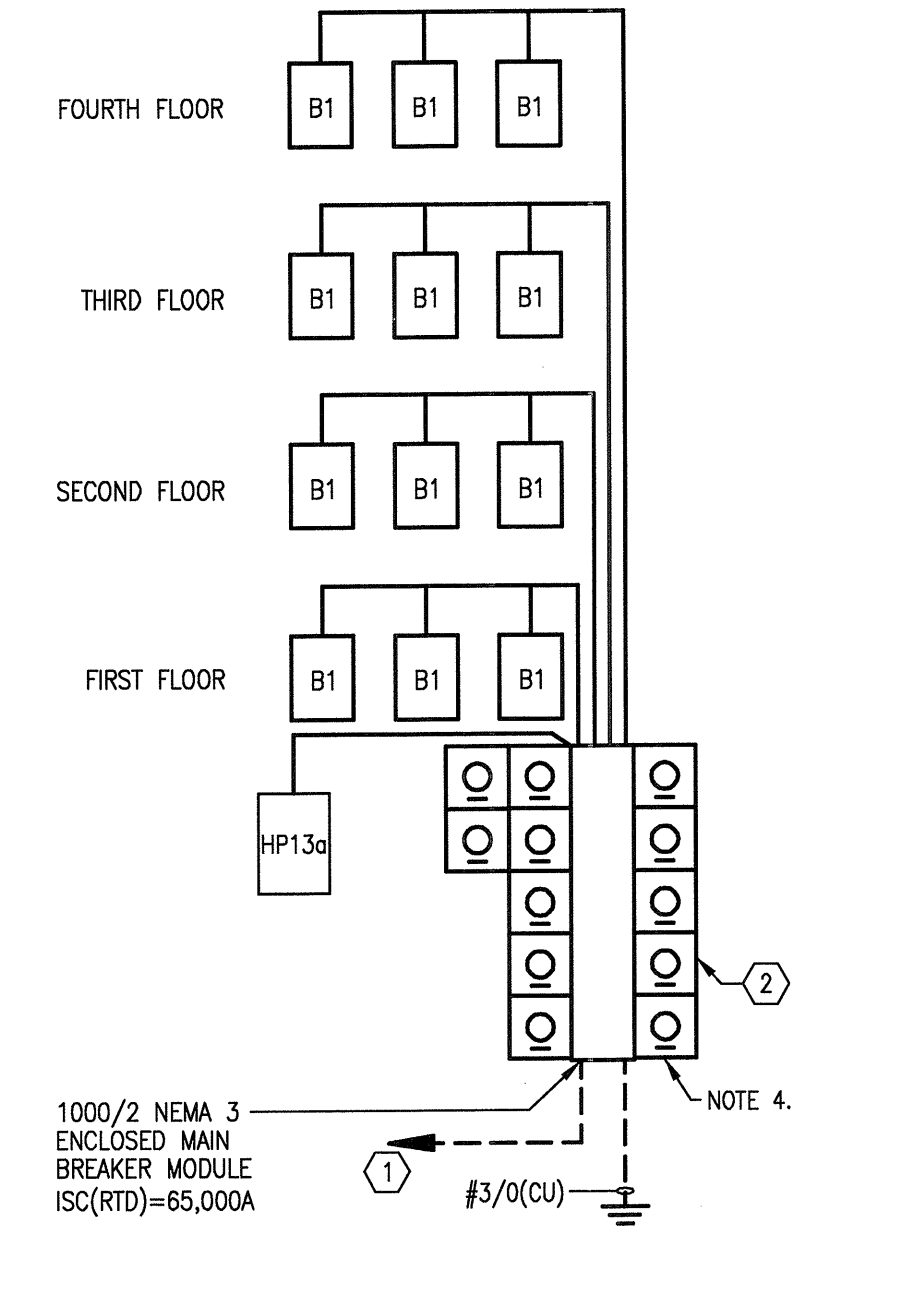
**2 METER CENTER 11a**  
SCALE: NOT TO SCALE



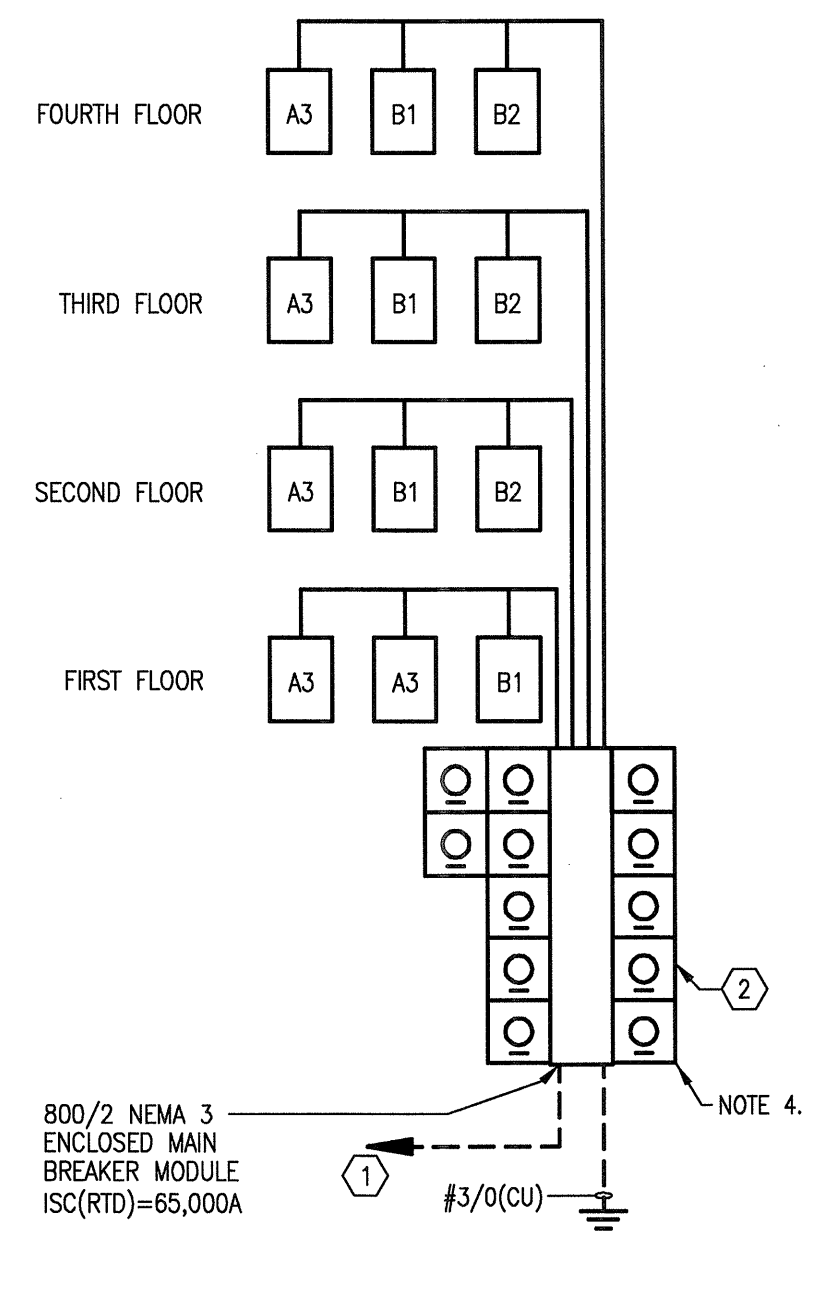
**3 METER CENTER 11b**  
SCALE: NOT TO SCALE



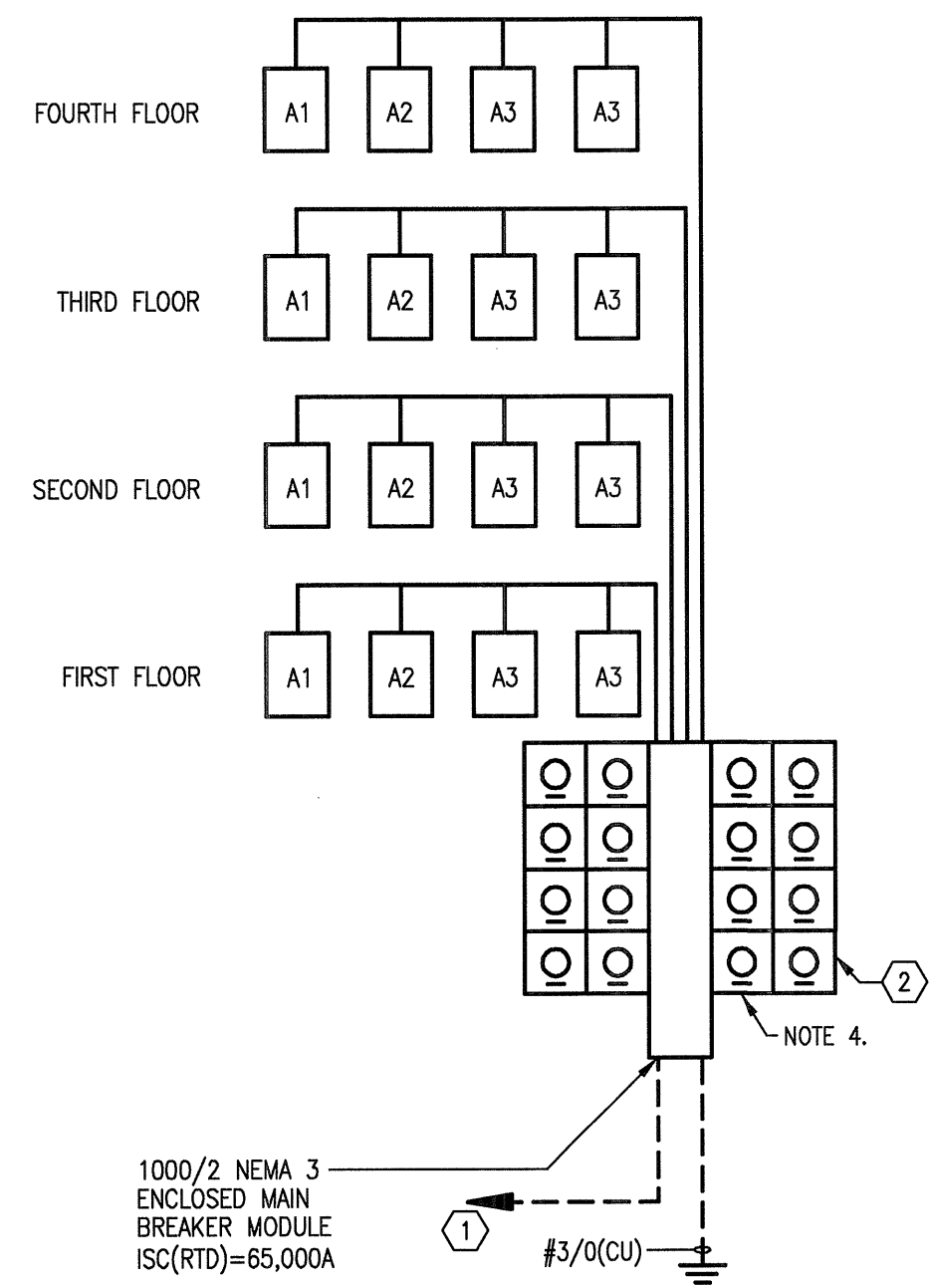
**4 METER CENTER 12**  
SCALE: NOT TO SCALE



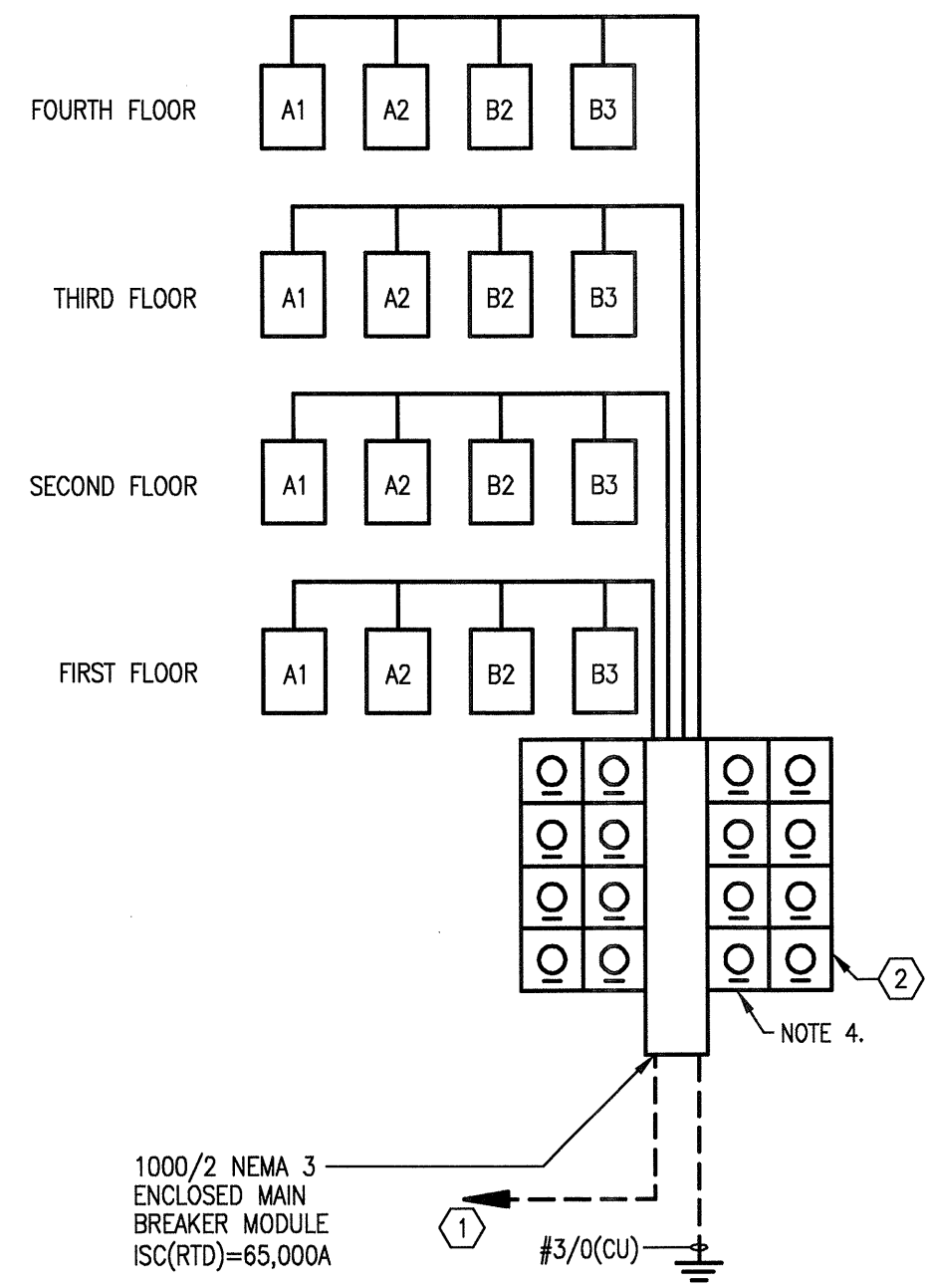
**5 METER CENTER 13a**  
SCALE: NOT TO SCALE



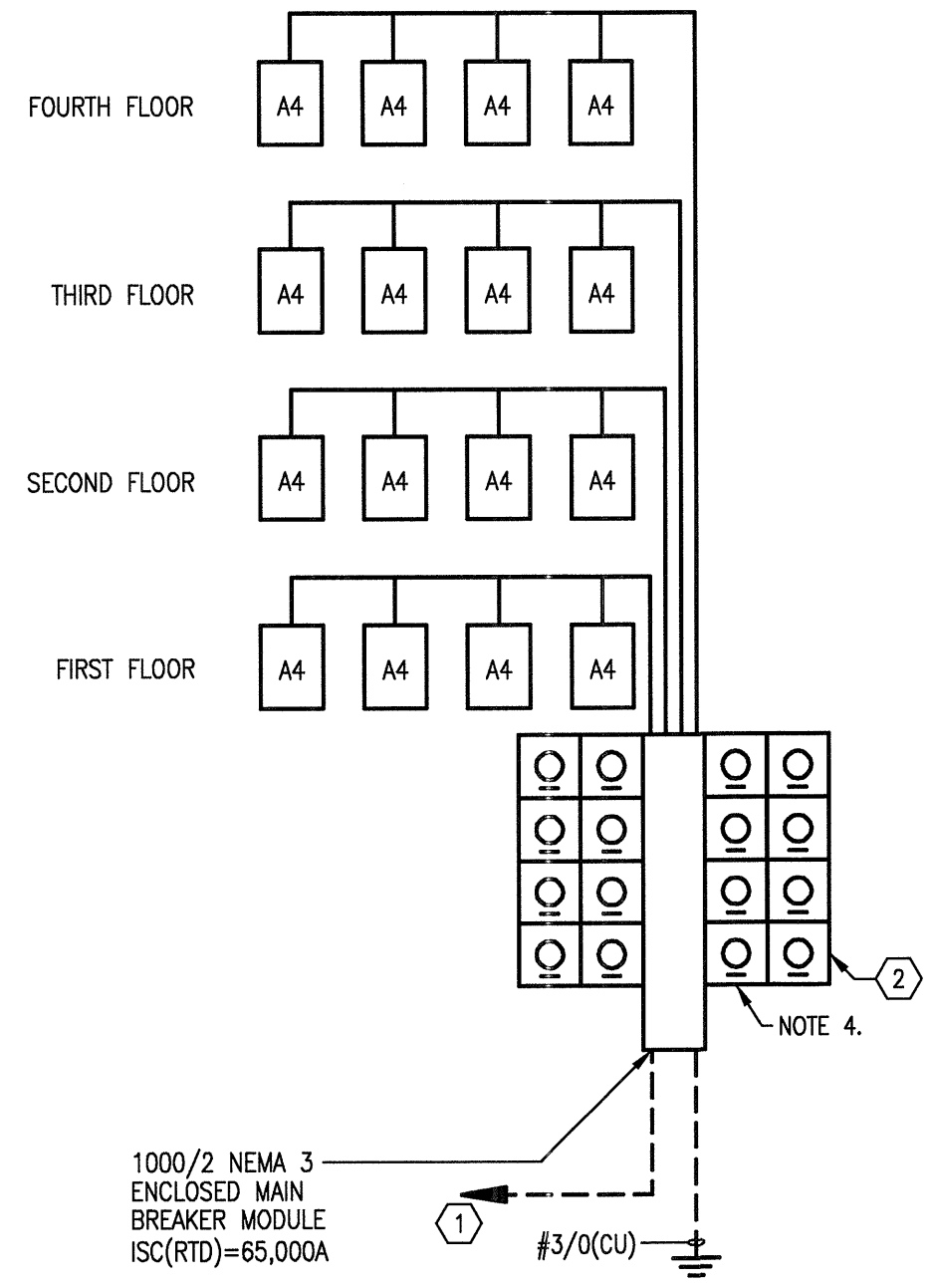
**6 METER CENTER 13b**  
SCALE: NOT TO SCALE



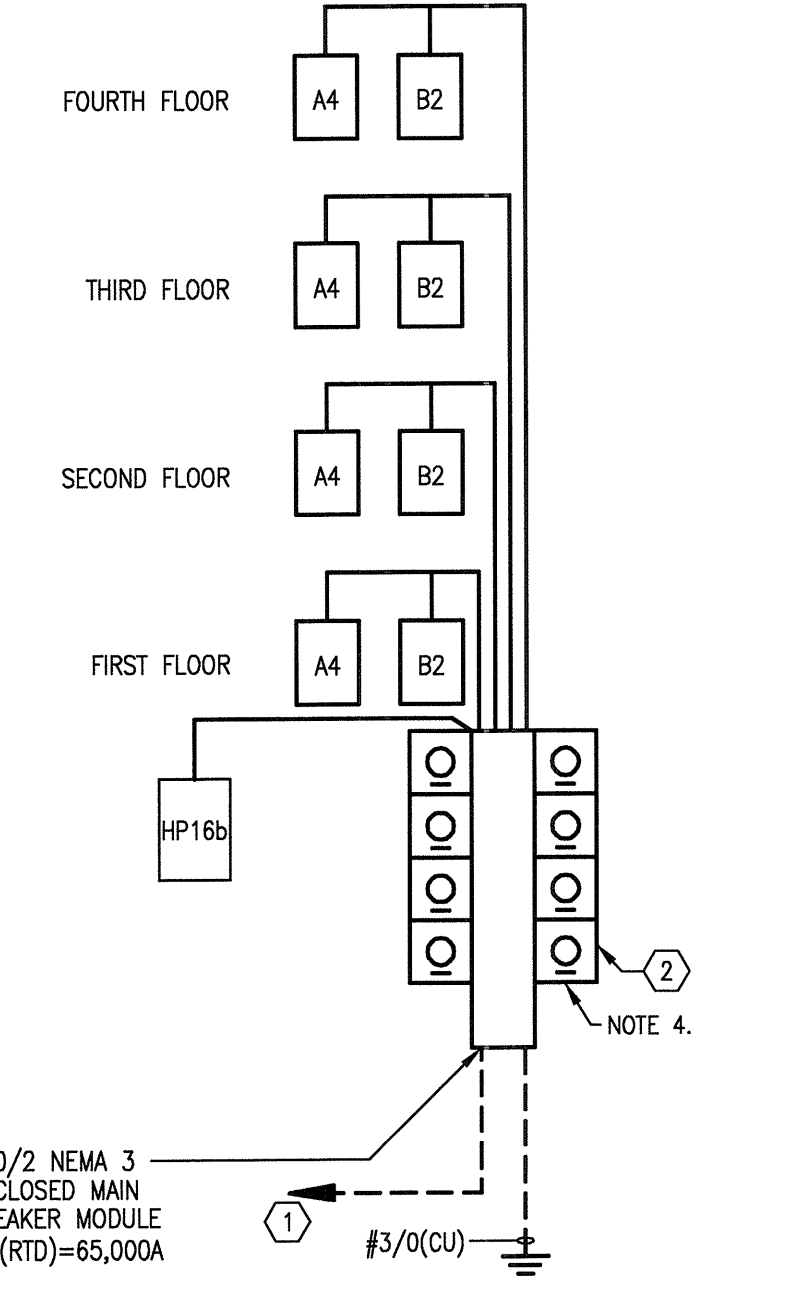
**7 METER CENTER 14**  
SCALE: NOT TO SCALE



**8 METER CENTER 15**  
SCALE: NOT TO SCALE



**9 METER CENTER 16a**  
SCALE: NOT TO SCALE



**10 METER CENTER 16b**  
SCALE: NOT TO SCALE

**GENERAL NOTES:**

- THE 10 KAIC BREAKERS IN THE LOAD CENTERS AND THE 22 KAIC BREAKERS AT THE METERS SHALL BE SERIES RATED WITH THE 65 KAIC MAIN SERVICE BREAKERS FOR 65 KAIC PROTECTION AT THE LOAD CENTER AND METER. METER CENTERS AND LOAD CENTERS SHALL BE U.L. LISTED AND LABELED FOR THIS PURPOSE.
- CONTRACTOR SHALL PROVIDE A PLAQUE AT EACH SERVICE LOCATION DENOTING LOCATION FOR ALL OTHER SERVICES AT EACH BUILDING.

**KEY NOTES:**

- NOTE THAT POWER COMPANY PAD-MOUNTED TRANSFORMERS CAN ACCEPT A LIMITED NUMBER OF SECONDARY CONDUITS, THEREFORE, PROVIDE SERVICE ENTRANCE LATERALS AS FOLLOWS:  
 600A METER CENTER: (2 SETS) 3 #500MCM (AL. S.E.R.); 600A MAIN BREAKER.  
 800A METER CENTER: (3 SETS) 3 #400MCM (AL. S.E.R.); 800A MAIN BREAKER.  
 1000A METER CENTER: (3 SETS) 3 #600MCM (AL. S.E.R.); 1000A MAIN BREAKER.  
 1200A METER CENTER: (4 SETS) 3 #500MCM (AL. S.E.R.); 1200A MAIN BREAKER.  
 1600A METER CENTER: (4 SETS) 3 #600MCM (AL. S.E.R.); 1600A MAIN BREAKER.
- CONTRACTOR SHALL FURNISH AND INSTALL U.L. LISTED, SERIES CONNECTED RATED, CURRENT LIMITING CIRCUIT BREAKERS WITH AMPERE RATINGS INDICATED. BREAKER SHALL BE TESTED TO PROTECT DOWNSTREAM EQUIPMENT AT RATINGS INDICATED.
- PROVIDE 240 VOLT, 1-PHASE MAINS AND HOUSE PANELS, WITH SINGLE-PHASE, 240 VOLT SERVICE TO INDIVIDUAL UNITS. USE TO COORDINATE ENTIRE SERVICE ENTRANCE INSTALLATION WITH POWER COMPANY, BUILDING OFFICIAL(S), AND/OR LOCAL (ELECTRICAL) AHI.