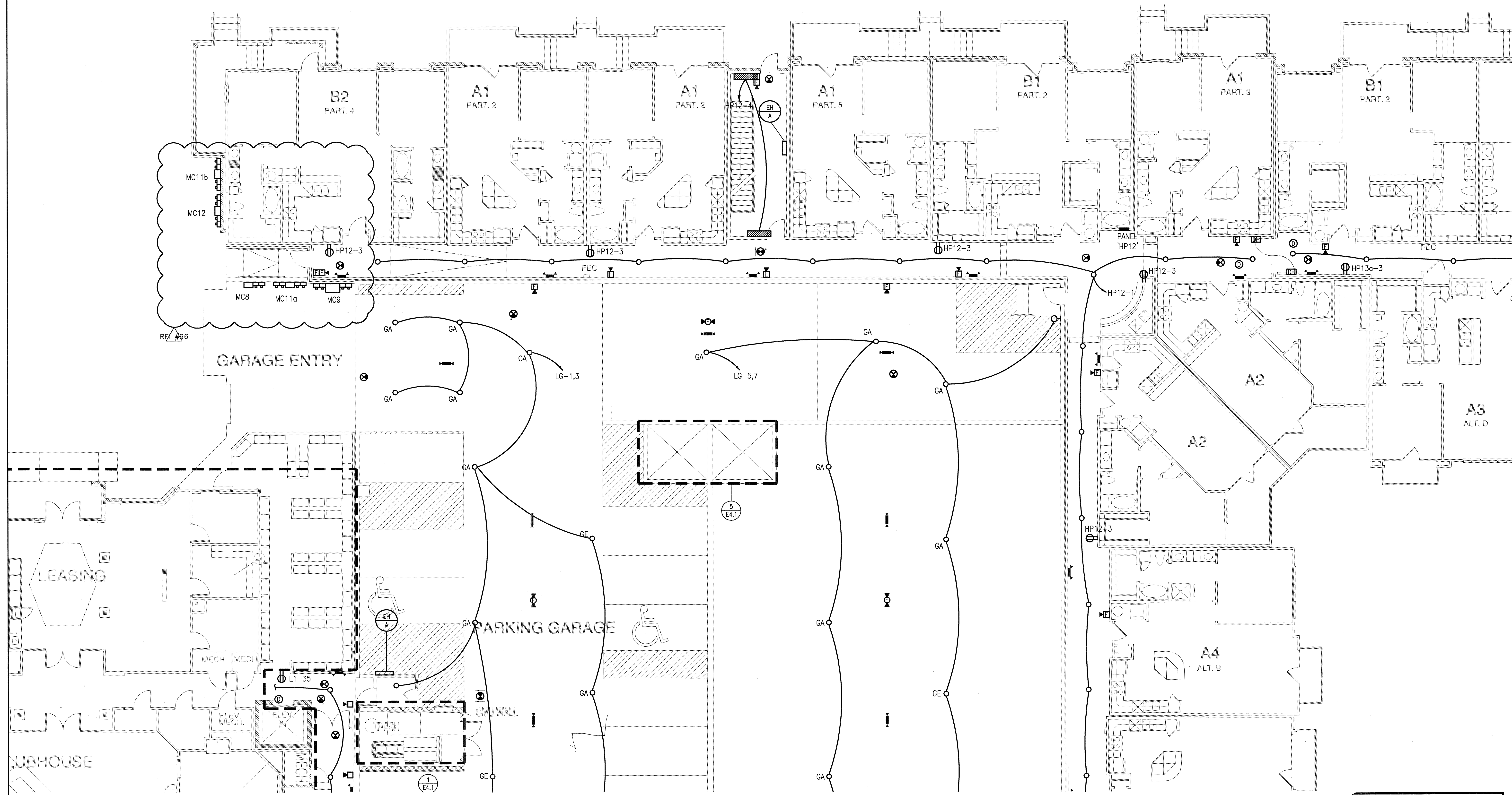


REVISIONS		
△	9-2-2011	DESIGN REVISIONS
△	9-13-2011	ANSI/FHA COMMENTS
△	9-23-2011	DESIGN REVISIONS
△	10-17-2011	CONSTRUCTION ISSUE
△	12-21-2011	DESIGN REVISIONS
△	1-17-2012	DESIGN REVISIONS
△	2-15-2012	TRANSFORMER REVISIONS
△	3-27-2012	CLUBHOUSE REVISIONS

GENERAL NOTES:

G-1 U.N.O., ALL LIGHTING FIXTURES SHALL BE TYPE 'B'.

G-2 ALL EMERGENCY LIGHTS (E4) SHALL BE CONNECTED TO THE UNSWITCHED PHASE CONDUCTOR OF THE CIRCUIT SERVING THE RESPECTIVE AREA.



KELLER SPRINGS LOFTS

LOFT APARTMENTS IN ADDISON, TEXAS

BGO
architects

4144 N. Central Expy.
Suite 855
Dallas, TX 75204
214.520.8878
bgoarchitects.com

DATE
08-05-11

PROJECT
11129

SHEET NUMBER
E-3.1C

1 DIVISION 'C' FIRST FLOOR PLAN
SCALE: 1/8" = 1'-0"

JSE Jordan & Skala Engineers
14240 Midway Road, Suite 330
Dallas, TX 75244-5138
W: (469) 385-1416 F: (469) 385-1613
Project Number - 113-0355 Texas Firm Registration # F-4990
Drawn By: MJ Checked By: RAD