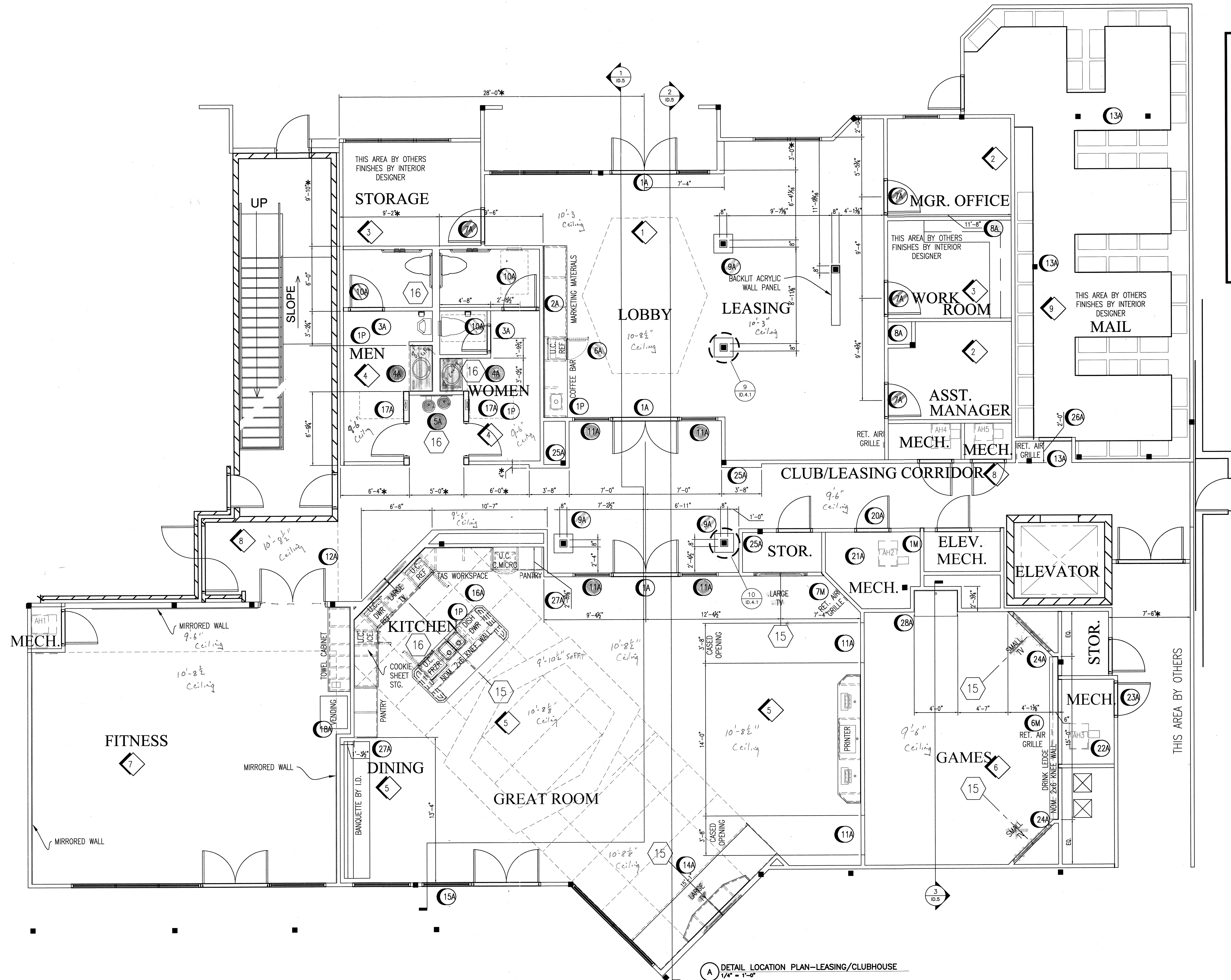


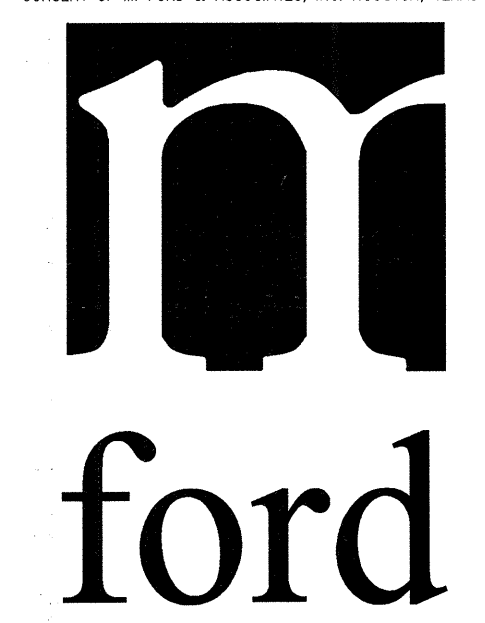
KELLER SPRINGS CLUBHOUSE  
ADDISON, TX

ISSUED FOR PRESENTATION  
NOVEMBER 9, 2011



DETAIL LOCATION PLAN

© 2011 M. FORD & ASSOCIATES INC.  
THIS DOCUMENT IS PUBLISHED AS AN INSTRUMENT OF SERVICE AND IS GIVEN IN CONFIDENCE. IT REMAINS THE PROPERTY OF M. FORD & ASSOCIATES, INC. AND THE INFORMATION CONTAINED HEREIN MAY NOT BE REPRODUCED, COPIED, OR DISCLOSED WITHOUT WRITTEN CONSENT OF M. FORD & ASSOCIATES, INC. HOUSTON, TEXAS



m. ford & associates  
interior design  
99 deterring street  
suite 165  
houston, tx 77007  
phone 713-630-0800  
fax 713-630-0814  
mford@mfordassociates.com  
www.mfordassociates.com

drawn by: Queen of the World

SHEET NO.

ID.1

A DETAIL LOCATION PLAN-LEASING/CLUBHOUSE  
1/4" = 1'-0"