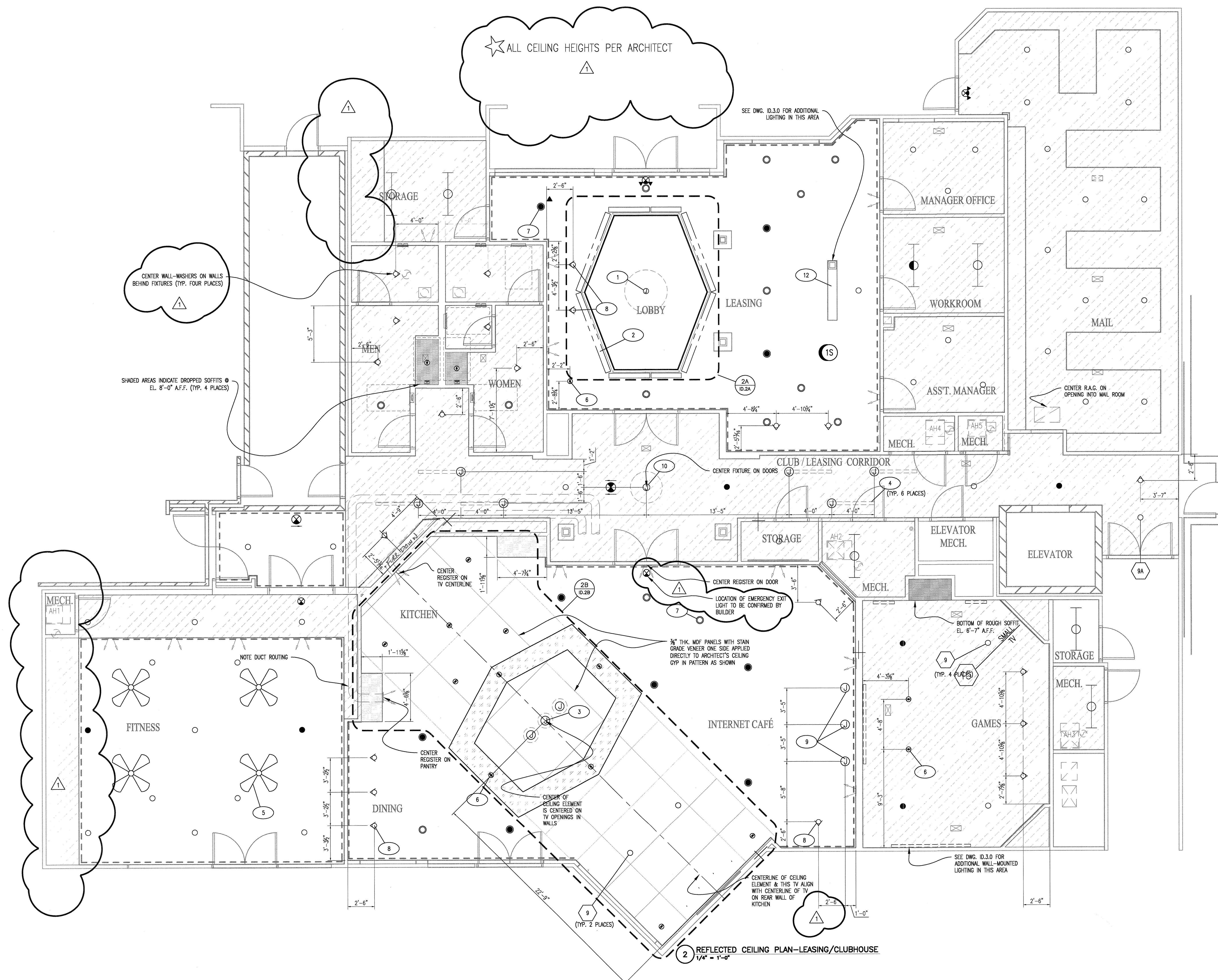


REVISED FOR CONSTRUCTION  
MAY 16, 2012

KELLER SPRINGS  
CLUBHOUSE  
ADDISON, TX



CENTER WALL—WASHERS ON WALLS  
BEHIND FIXTURES (TYP. FOUR PLACES)

SHADED AREAS INDICATE DROPPED SOFFITS @  
EL. 8'-0" A.F.F. (TYP. 4 PLACES)

☆ ALL CEILING HEIGHTS PER ARCHITECT

SEE DWG. ID.3.0 FOR ADDITIONAL  
LIGHTING IN THIS AREA

LOCATION OF EMERGENCY EXIT  
LIGHT TO BE CONFIRMED BY  
BUILDER

3/4" THK. MDF PANELS WITH STAIN  
GRADE VENEER ONE SIDE APPLIED  
DIRECTLY TO ARCHITECT'S CEILING  
GYP IN PATTERN AS SHOWN

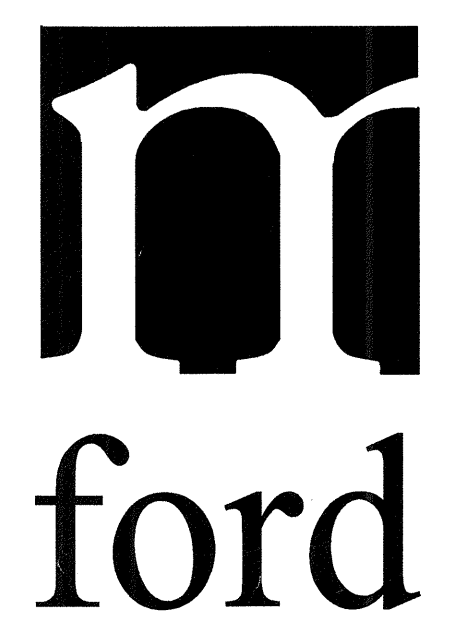
BOTTOM OF ROUGH SOFFIT  
EL. 6'-7" A.F.F.

SEE DWG. ID.3.0 FOR  
ADDITIONAL WALL-MOUNTED  
LIGHTING IN THIS AREA

2 REFLECTED CEILING PLAN—LEASING/CLUBHOUSE  
1/4" = 1'-0"

△ ADDED FABRICATION DETAILS 5-16-12

© 2012 M. FORD & ASSOCIATES INC.  
THIS DOCUMENT IS PUBLISHED AS AN INSTRUMENT OF  
SERVICE AND IS GIVEN IN CONFIDENCE. IT REMAINS THE  
PROPERTY OF M. FORD & ASSOCIATES, INC. NO PART OF  
THIS DOCUMENT, AND THE INFORMATION CONTAINED THEREIN  
MAY NOT BE REPRODUCED OR TRANSMITTED IN ANY FORM OR  
BY ANY MEANS, ELECTRONIC OR MECHANICAL, INCLUDING  
PHOTOCOPYING, RECORDING, OR BY ANY INFORMATION  
SYSTEMS WITHOUT THE WRITTEN CONSENT OF M. FORD & ASSOCIATES, INC., HOUSTON, TEXAS.



m. ford & associates  
interior design  
99 deterring street  
suite 165  
houston, tx 77007  
phone 713-630-0800  
fax 713-630-0814  
mford@mfordassociates.com  
www.mfordassociates.com

drawn by:  
Queen of the World

SHEET NO.

ID.2

REFLECTED CEILING PLAN