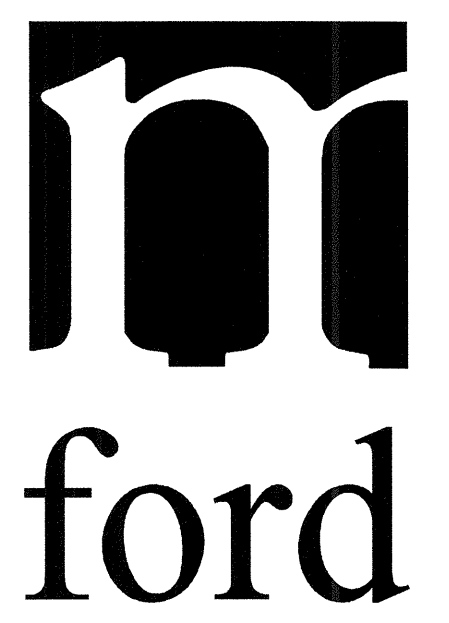


KELLER SPRINGS CLUBHOUSE
ADDISON, TX

ISSUED FOR CONSTRUCTION
APRIL 23, 2012

ENLARGED PLAN & SECTION @
LEASING LOBBY LIGHT COVE

© 2012 M. FORD & ASSOCIATES INC.
THIS DOCUMENT IS PUBLISHED AS AN INSTRUMENT OF SERVICE AND IS GIVEN IN CONFIDENCE. IT REMAINS THE PROPERTY OF M. FORD & ASSOCIATES, INC. THIS DOCUMENT AND THE INFORMATION CONTAINED WITHIN MAY NOT BE REPRODUCED OR DISCLOSED WITHOUT WRITTEN CONSENT OF M. FORD & ASSOCIATES, INC., HOUSTON, TEXAS

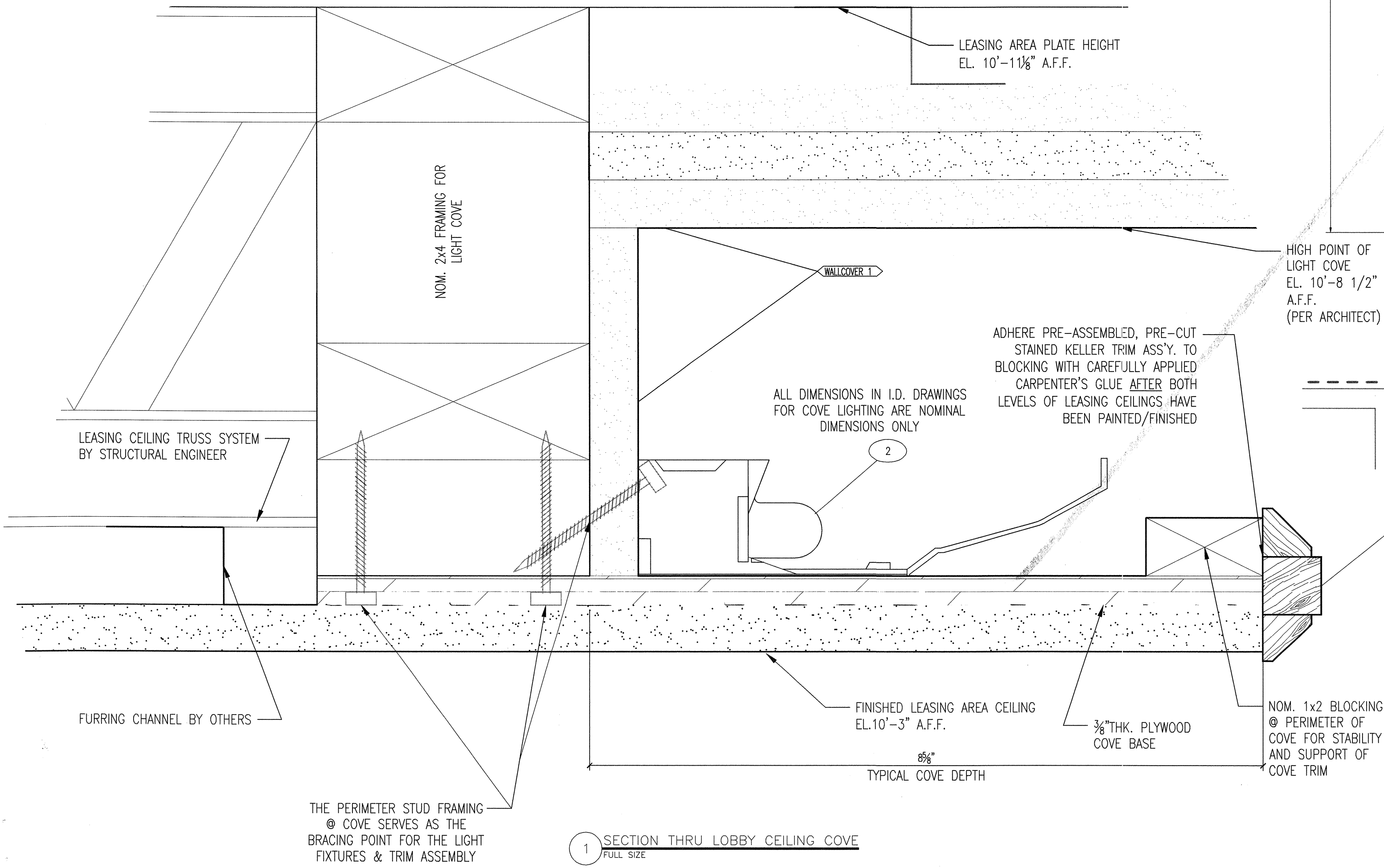
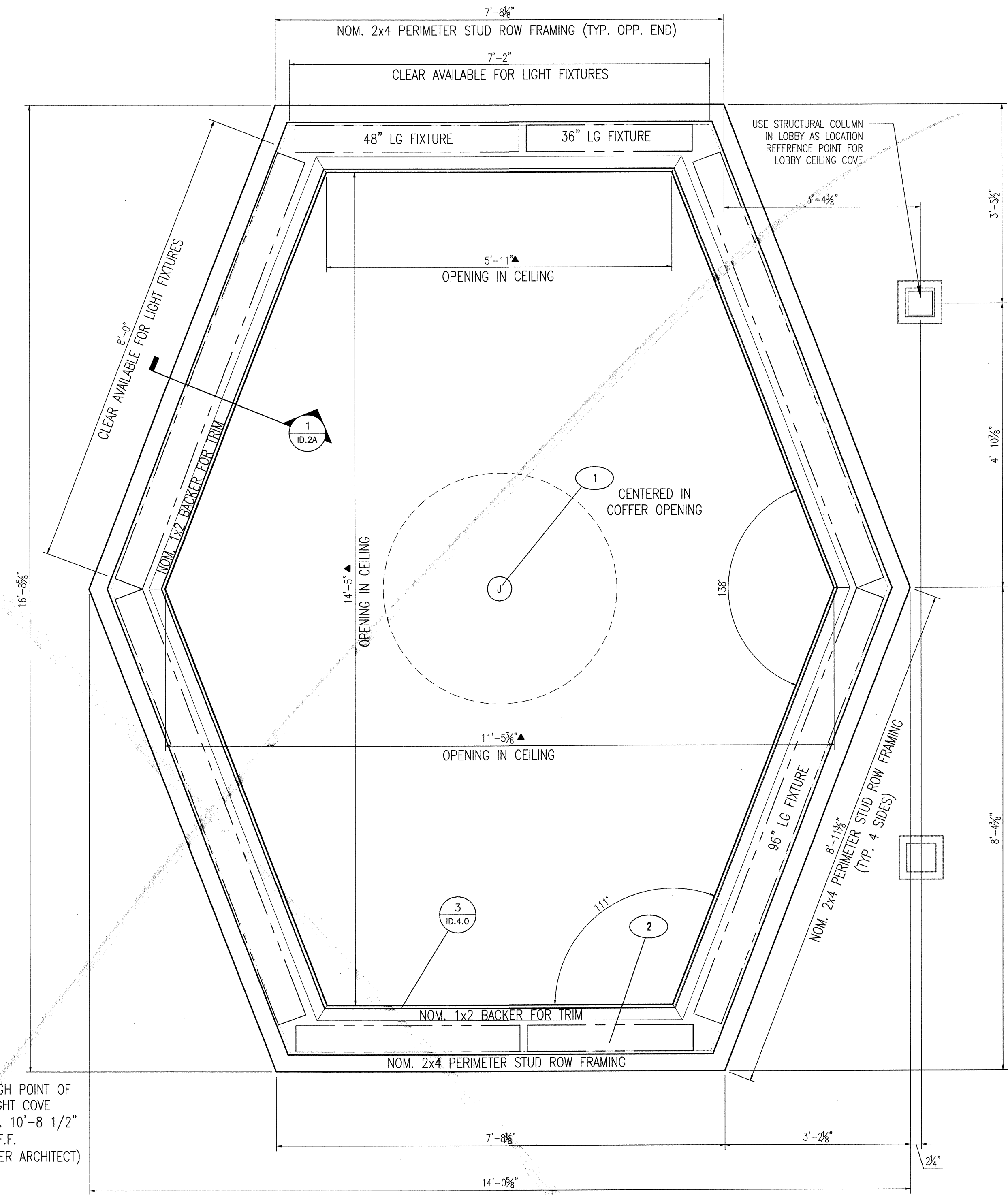


m. ford & associates
interior design
99 detersing street
suite 165
houston, tx 77007
phone 713-630-0800
fax 713-630-0814
mford@mfordassociates.com
www.mfordassociates.com

drawn by
Queen of the World

SHEET NO.

ID.2A



2A ENLARGED PLAN @ LOBBY CEILING LIGHT COVE
3/4" = 1'-0"