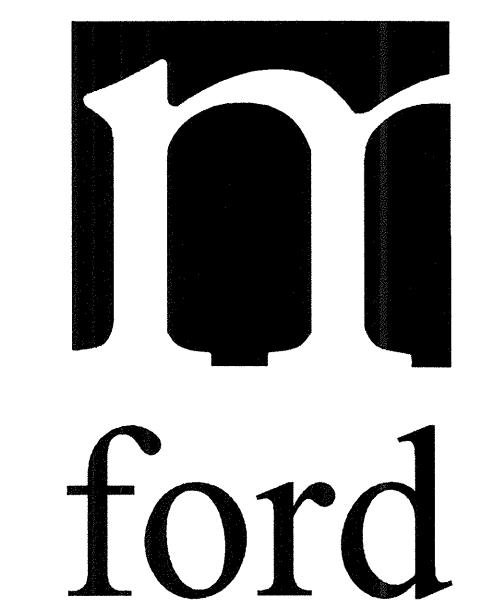


ISSUED FOR CONSTRUCTION  
APRIL 23, 2012

KELLER SPRINGS CLUBHOUSE  
ADDISON, TX

MISCELLANEOUS ELECTRICAL PLAN

© 2012 M. FORD & ASSOCIATES INC.  
THIS DOCUMENT IS PUBLISHED AS AN INSTRUMENT OF SERVICE AND IS GIVEN IN CONFIDENCE. IT REMAINS THE PROPERTY OF M. FORD & ASSOCIATES, INC. THIS DOCUMENT, AND THE INFORMATION CONTAINED WITHIN MAY NOT BE DUPLICATED OR DISCLOSED WITHOUT THE WRITTEN CONSENT OF M. FORD & ASSOCIATES, INC. HOUSTON, TEXAS

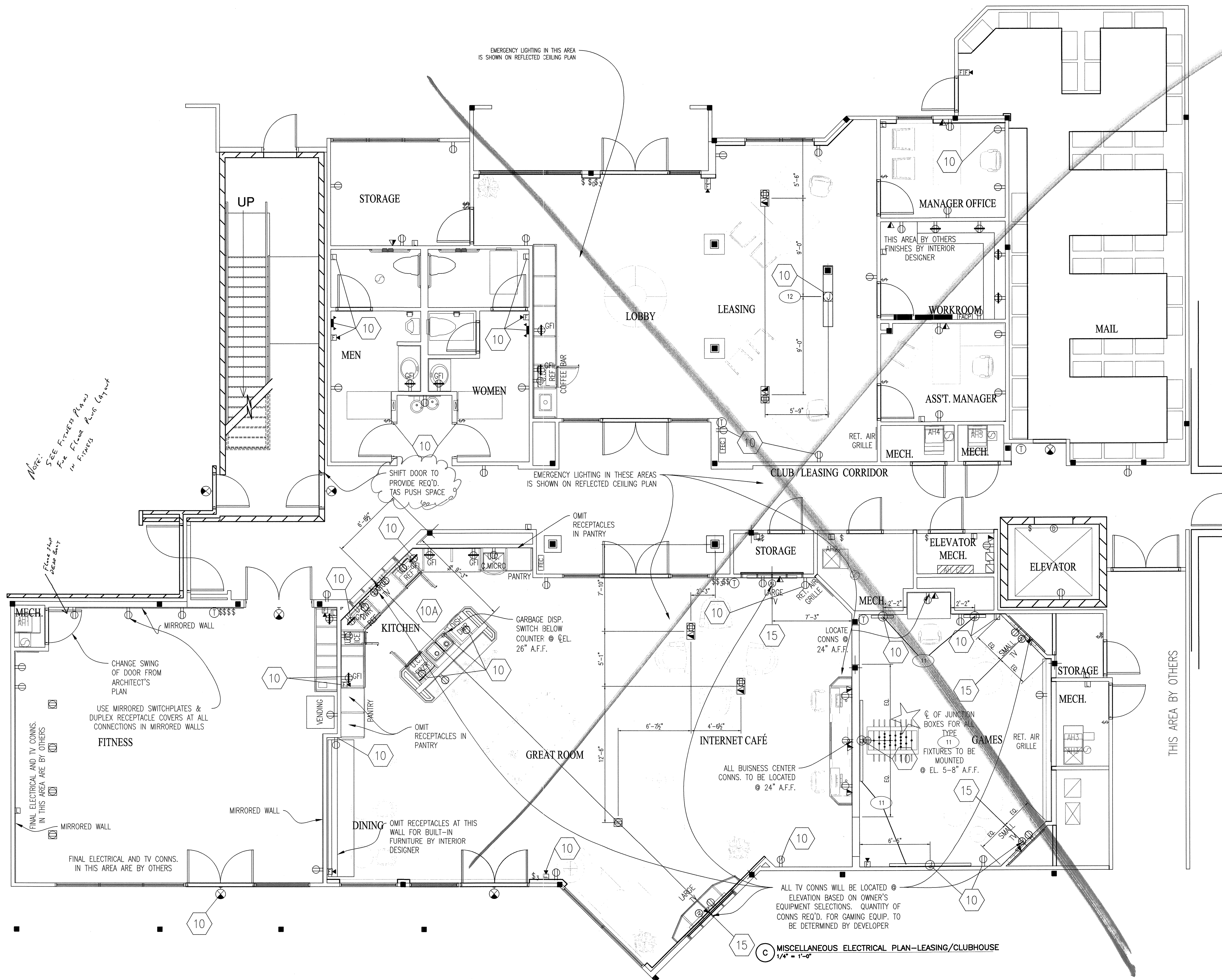


m. ford & associates  
interior design  
99 detersing street  
suite 165  
houston, tx 77007  
phone 713-630-0800  
fax 713-630-0814  
mford@mfordassociates.com  
www.mfordassociates.com

drawn by  
Queen of the World

SHEET NO.

ID.3



C MISCELLANEOUS ELECTRICAL PLAN-LEASING/CLUBHOUSE  
1/4" = 1'-0"