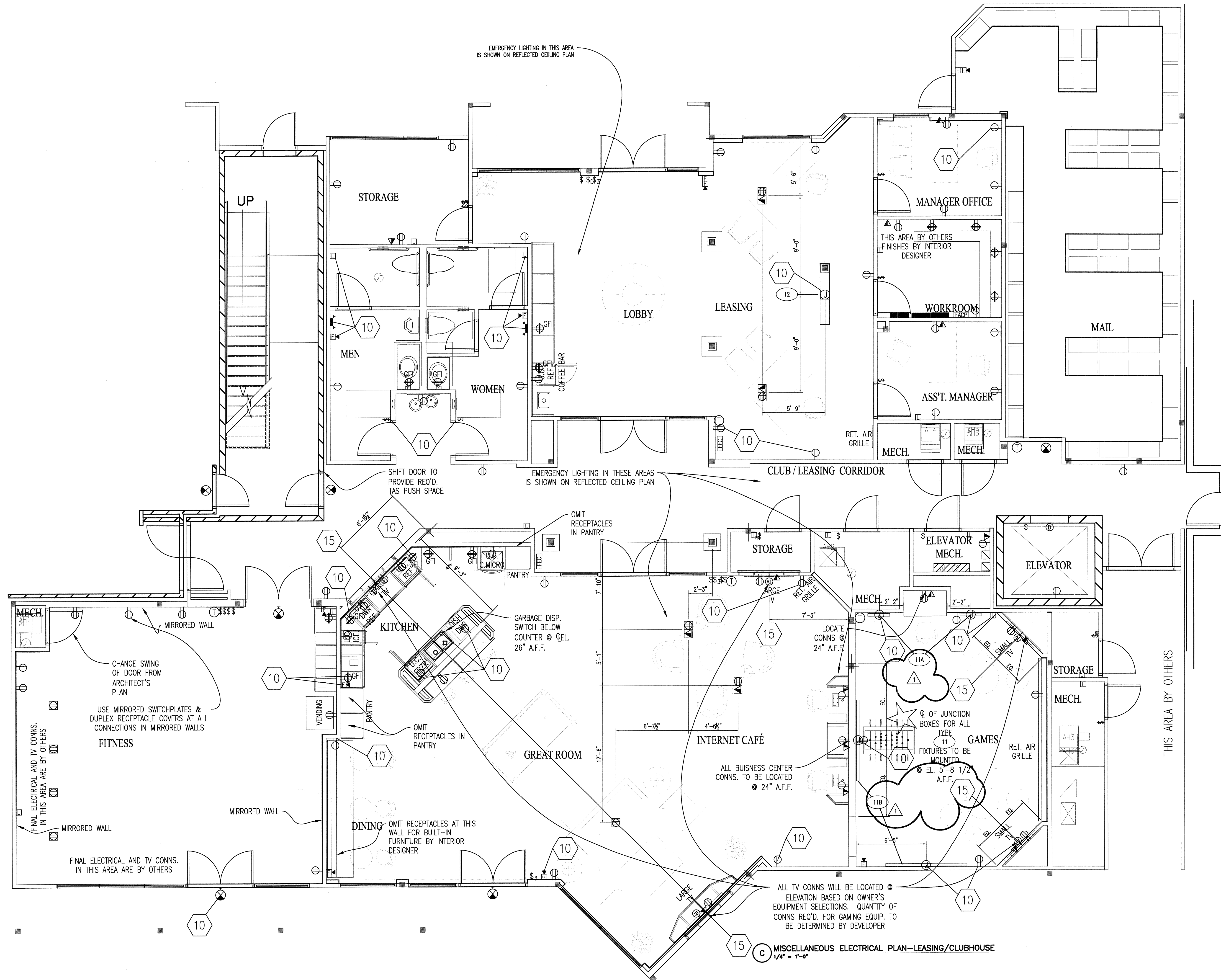


REVISED FOR CONSTRUCTION
MAY 16, 2012

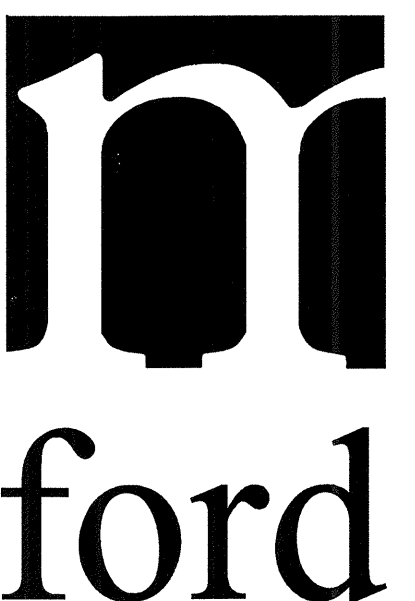
KELLER SPRINGS
CLUBHOUSE
ADDISON, TX



MISCELLANEOUS ELECTRICAL PLAN

▲ ADDED FABRICATION DETAILS 5-16-12

© 2012 M. FORD & ASSOCIATES INC.
THIS DOCUMENT IS PUBLISHED AS AN INSTRUMENT OF SERVICE AND IS GIVEN IN CONFIDENCE. IT REMAINS THE PROPERTY OF M. FORD & ASSOCIATES, INC. THIS DOCUMENT, AND THE INFORMATION CONTAINED WITHIN MAY NOT BE REPRODUCED OR DISCLOSED WITHOUT THE WRITTEN CONSENT OF M. FORD & ASSOCIATES, INC. HOUSTON, TEXAS



m. ford & associates
interior design
99 detersing street
suite 165
houston, tx 77007
phone 713-630-0800
fax 713-630-0814
mford@mfordassociates.com
www.mfordassociates.com

drawn by: Queen of the World

SHEET NO.

ID.3

C MISCELLANEOUS ELECTRICAL PLAN-LEASING/CLUBHOUSE
1/4" = 1'-0"