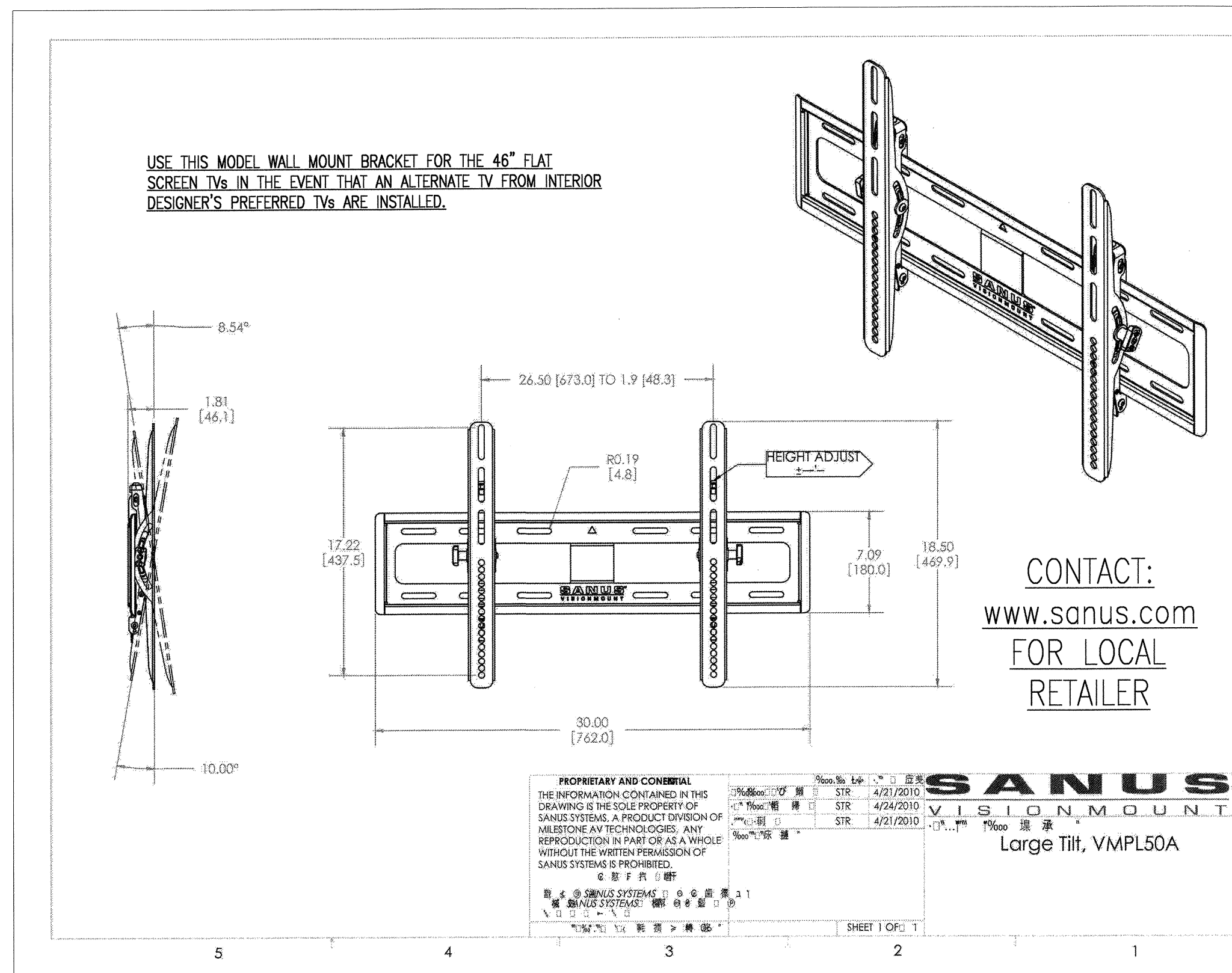
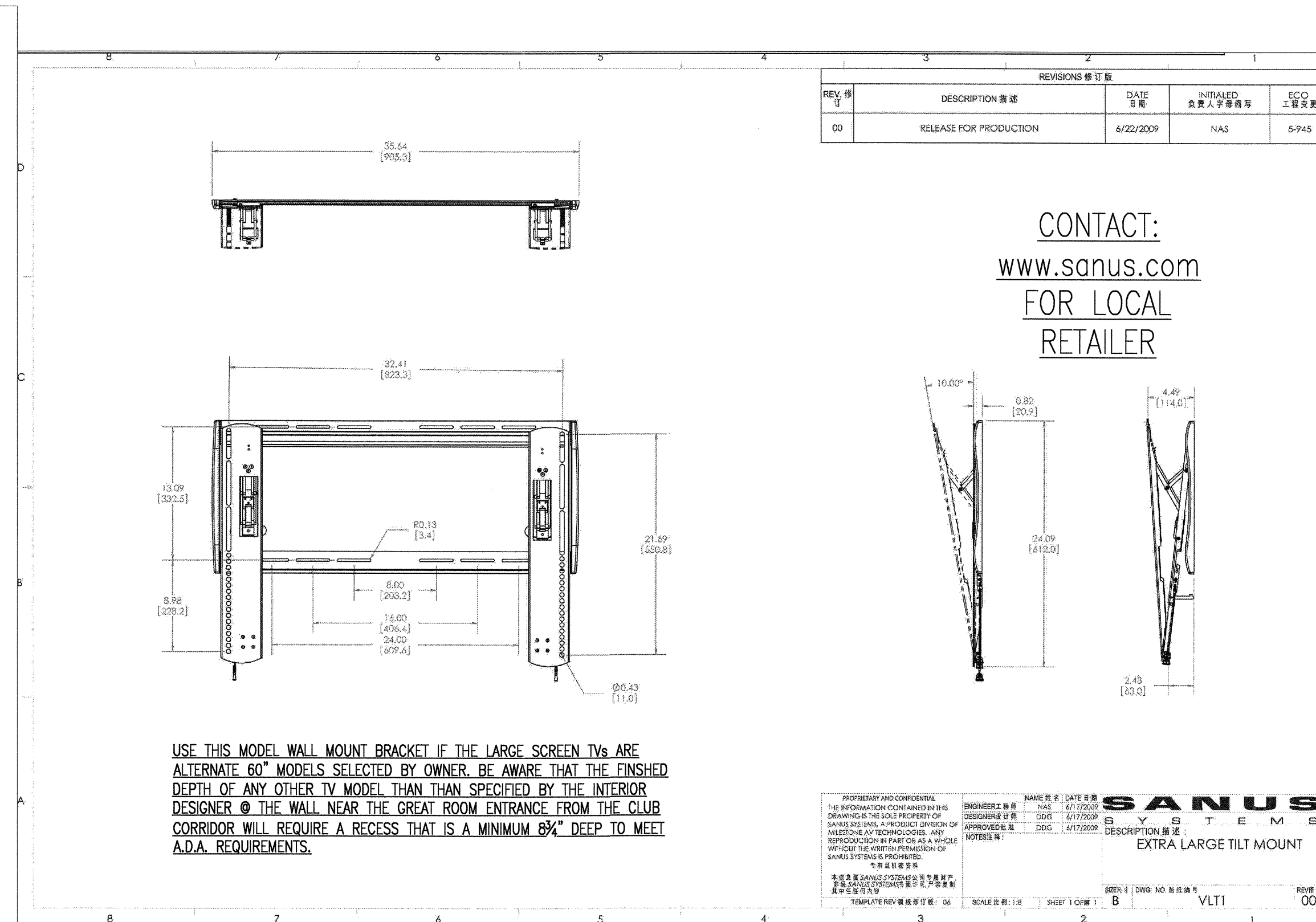


ISSUED FOR CONSTRUCTION
APRIL 23, 2012

KELLER SPRINGS CLUBHOUSE
ADDISON, TX



CONTACT:
www.sanus.com
FOR LOCAL
RETAILER



CONTACT:
www.sanus.com
FOR LOCAL
RETAILER

USE THIS MODEL WALL MOUNT BRACKET IF THE LARGE SCREEN TV'S ARE ALTERNATE 60" MODELS. SELECTED BY OWNER. BE AWARE THAT THE FINISHED DEPTH OF ANY OTHER TV MODEL THAN THAT SPECIFIED BY THE INTERIOR DESIGNER @ THE WALL NEAR THE GREAT ROOM ENTRANCE FROM THE CLUB CORRIDOR WILL REQUIRE A RECESS THAT IS A MINIMUM 8 3/4" DEEP TO MEET A.D.A. REQUIREMENTS.

CONTACT: www.sharpusa.com
FOR LOCAL AQUOS
RETAILER

INTERIOR DESIGNER'S FLAT SCREEN SELECTION FOR SMALL SCREENS
@ GAME ROOM
SHARP AQUOS LC-46LE830U

Basic Specifications	
Screen Size Class	46" Class (46" Diagonal)
Panel Type	X-Gen LCD Panel
10-bit LCD Panel	Yes
Pixel Resolution	Full 1920 x 1080 HD Resolution
Backlight System	Edge lit LED
Viewing Angles	176° H / 176° V
Audio System	10W + 10W + 15W (Subwoofer)
Tuning System	ATSC / QAM / NTSC
Dynamic Contrast Ratio	6,000,000:1
Aspect Ratio	16:9
Response Time	4ms
Features	
Connected TV Services	Yes
AQUOS® Series	Yes
Quattron™ quad pixel technology	Yes
AQUOS Advantage™ Support	Yes
Digital Still Picture Display	Yes
Terminals	
Inputs	
HDMI®	4
HD Component	1
Composite Video	1
Audio Inputs (L/R) RCA	X 2
RS-232C	1
PC	1 (15-pin D-sub)
Ethernet Input	1
Power	
Power Consumption AC (watts)	180W
Power Source	120 V, 60 Hz
Weight & Dimensions	
Dimensions	
Dimensions (wxhxd) (inches)	42 13/64" x 26 7/64" x 15/8"
Weight	
Product Weight (lbs.)	41.9
Weight with Stand (lbs.)	50.7
Additional Specifications	
Limited Warranty	1 year parts and labor from date of purchase
Included Accessories	
Remote Control	Yes

INTERIOR DESIGNER'S FLAT SCREEN SELECTION FOR LARGE SCREEN
TVs @ KITCHEN, WALL NEAR CLUB ENTRANCE FROM CORRIDOR &
IN GREAT ROOM
(OPTIONAL 3D VERSION FOR GREAT ROOM IS #LC-60LE85U)

Item	Model: LC-60LE83U
LCD panel	Size: 60" Class (60" Diagonal)
	Resolution: 2,073,600 pixels (1,920 x 1,080)
TV-standard (CCIR)	American TV Standard ATSC/NTSC System
TV Function	VHF/UHF: VHF 2-13ch, UHF 14-69ch
	CATV: 1-135ch (non-scrambled channel only)
	Receiving Channel: Digital Terrestrial Broadcast (DVB-T) 2-69ch
Audio multiplex	Digital cable* (64/256 QAM): 1-135ch (non-scrambled channel only)
	BTSC System
Audio out	10 W g 2
Back panel vertical inputs	HDMI 1: HDMI in with HDCP, Audio in (Ø 3.5 mm stereo jack)
	HDMI 2: HDMI in with HDCP
	HDMI 3: HDMI in with HDCP
	HDMI 4: HDMI in with HDCP
Terminals back panel surface inputs	AUDIO OUT: Audio out (Ø 3.5 mm stereo jack)
	USB 1: Photo/Music/Video mode, Software update
	COMPONENT: COMPONENT in
	VIDEO 1: AV in
	VIDEO 2: AV in
	PC IN: ANALOG RGB (PC) in (15-pin mini D-sub female connector), Audio in (Ø 3.5 mm stereo jack)
	RS-232C: 9-pin D-sub male connector
Back panel horizontal inputs	ANT/CABLE: 75 ohm Ubalance, F Type 1 for Analog (VHF/UHF/CATV) and Digital (AIR/CABLE)
	AUDIO IN: Audio in (Ø 3.5 mm stereo jack)
	DIGITAL AUDIO OUTPUT: Optical Digital audio output 1 (PCM/Dolby Digital)
	ETHERNET: Network connector
OSD language	English/French/Spanish
Power Requirement	AC 120 V, 60 Hz
Power Consumption	207 W (0.1 W Standby with AC 120 V)
Weight	TV + stand: 72.8 lbs./33.0 kg
	TV only: 66.2 lbs./30.0 kg
Dimension* (W x H x D)	TV + stand: 54 7/16" g 34 1/4" g 13 1/8" inch
	TV only: 54 7/16" g 33 g 2 7/16" inch
Operating temperature	ø 32°F to ø 104°F (0°C to ø 40°C)

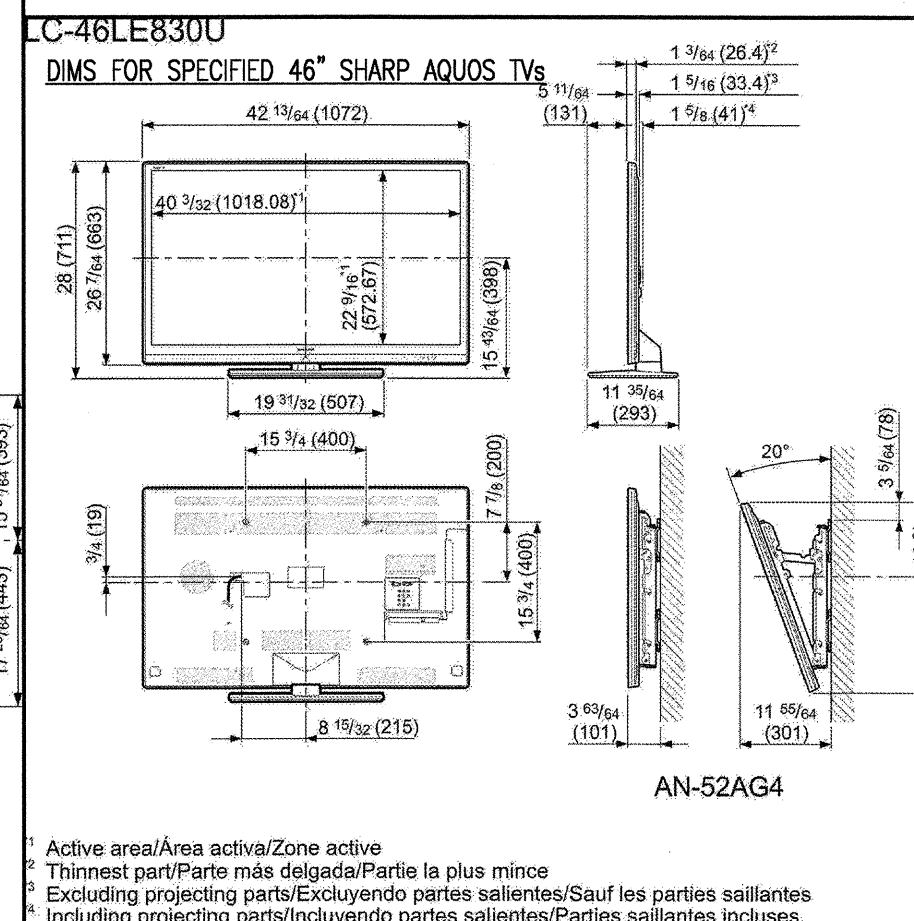
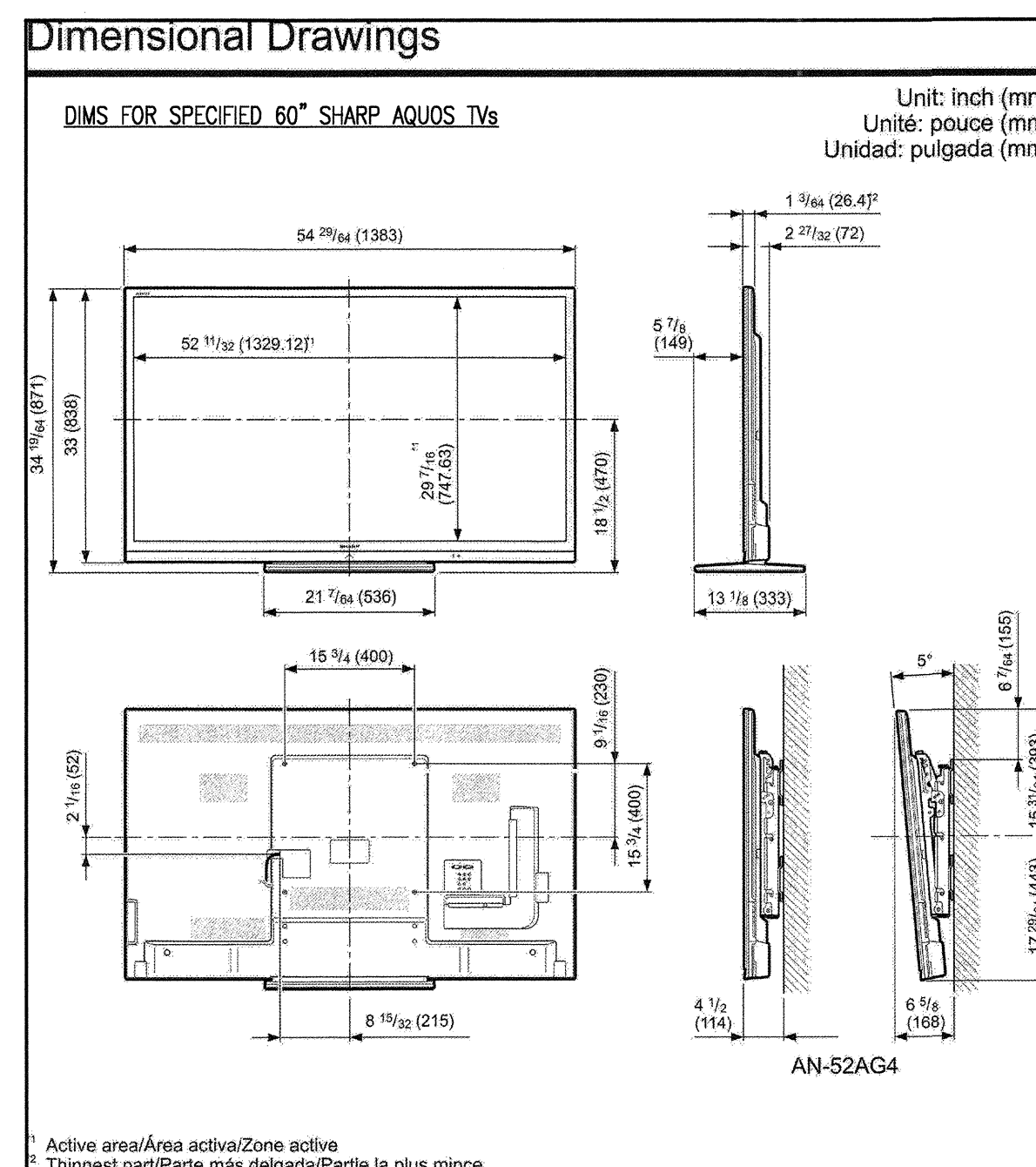
INTERIOR DESIGNER'S FLAT SCREEN TV SELECTION NOTES

TV SELECTIONS WERE BASED UPON THE FOLLOWING (IN ORDER OF IMPORTANCE):

1. DEPTH OF TV CHASSIS TO CONFORM WITH ADA PROTRUDING ELEMENT GUIDELINES.
2. HIGH DEFINITION
3. 3D OPTION (LARGE TV @ GREAT ROOM TV CABINET ONLY)
4. INCLUDED WIRELESS LAN ADAPTER
5. MULTI-MEDIA FRIENDLY—CABLE READY, DVD/BLU-RAY RECORDERS/PLAYERS, USB DRIVES, SOUND SYSTEMS, MEMORY CARDS AND CAMCORDERS
6. SLIM CLEAN LINES OF TV CHASSIS FRAME

SIZES SHOWN HERE ARE RECOMMENDED BASED UPON THE AMOUNT OF SPACE THE FINISHED INSTALLATION WILL COVER. ANYTHING SMALLER OR LARGER WILL NOT BE BALANCED WITH THE SURROUNDING INTERIOR DESIGN.

FINAL TV SELECTIONS TO BE DETERMINED BY OWNER

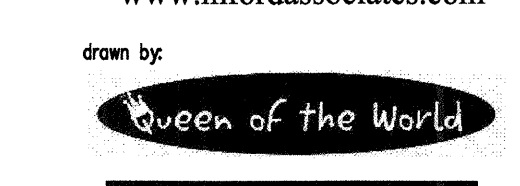


INTERIOR DESIGNER'S PREFERRED
FLAT SCREEN TV MODELS & MOUNTING BRACKETS

© 2012 M. FORD & ASSOCIATES INC.
THIS DOCUMENT IS PUBLISHED AS AN INSTRUMENT OF SERVICE AND IS GIVEN IN CONFIDENCE. IT REMAINS THE PROPERTY OF M. FORD & ASSOCIATES INC. THIS DOCUMENT, AND THE INFORMATION CONTAINED WITHIN, MAY NOT BE DUPLICATED OR DISCLOSED WITHOUT WRITTEN CONSENT OF M. FORD & ASSOCIATES, INC. HOUSTON, TEXAS



m. ford & associates
interior design
99 deterring street
suite 165
houston, tx 77007
phone 713-630-0800
fax 713-630-0814
mford@mfordassociates.com
www.mfordassociates.com



SHEET NO.

ID.4.3