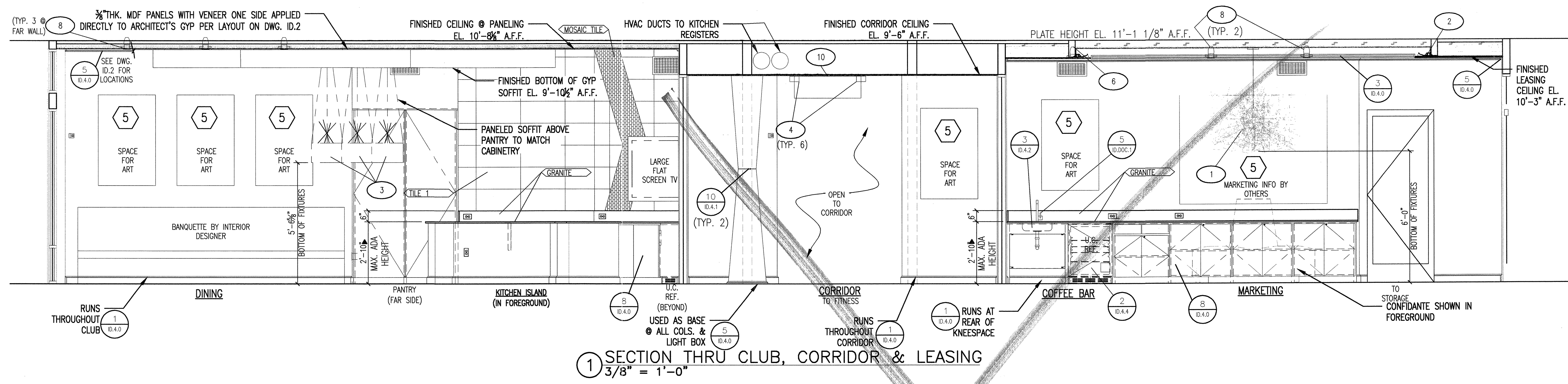


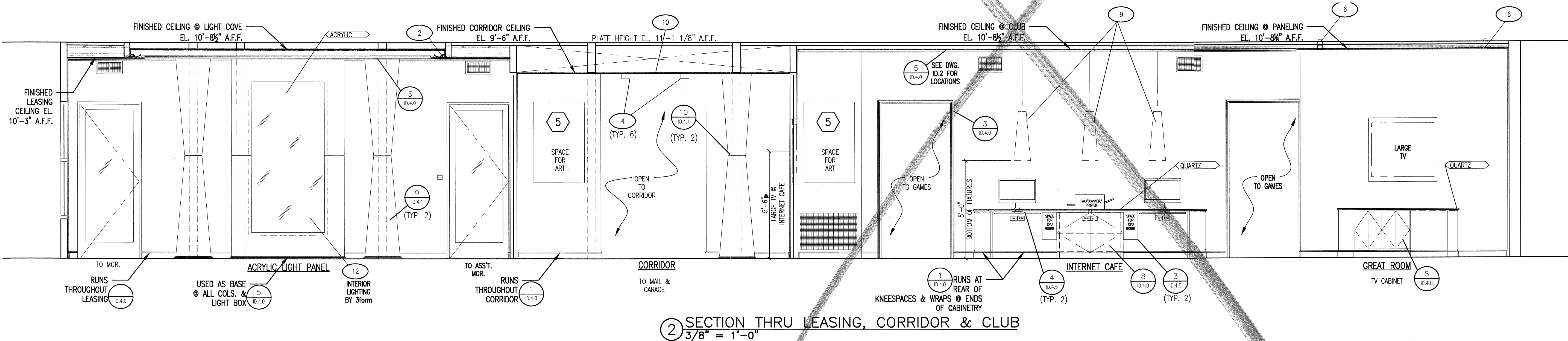
KELLER SPRINGS CLUBHOUSE  
ADDISON, TX

ISSUED FOR CONSTRUCTION  
APRIL 23, 2012

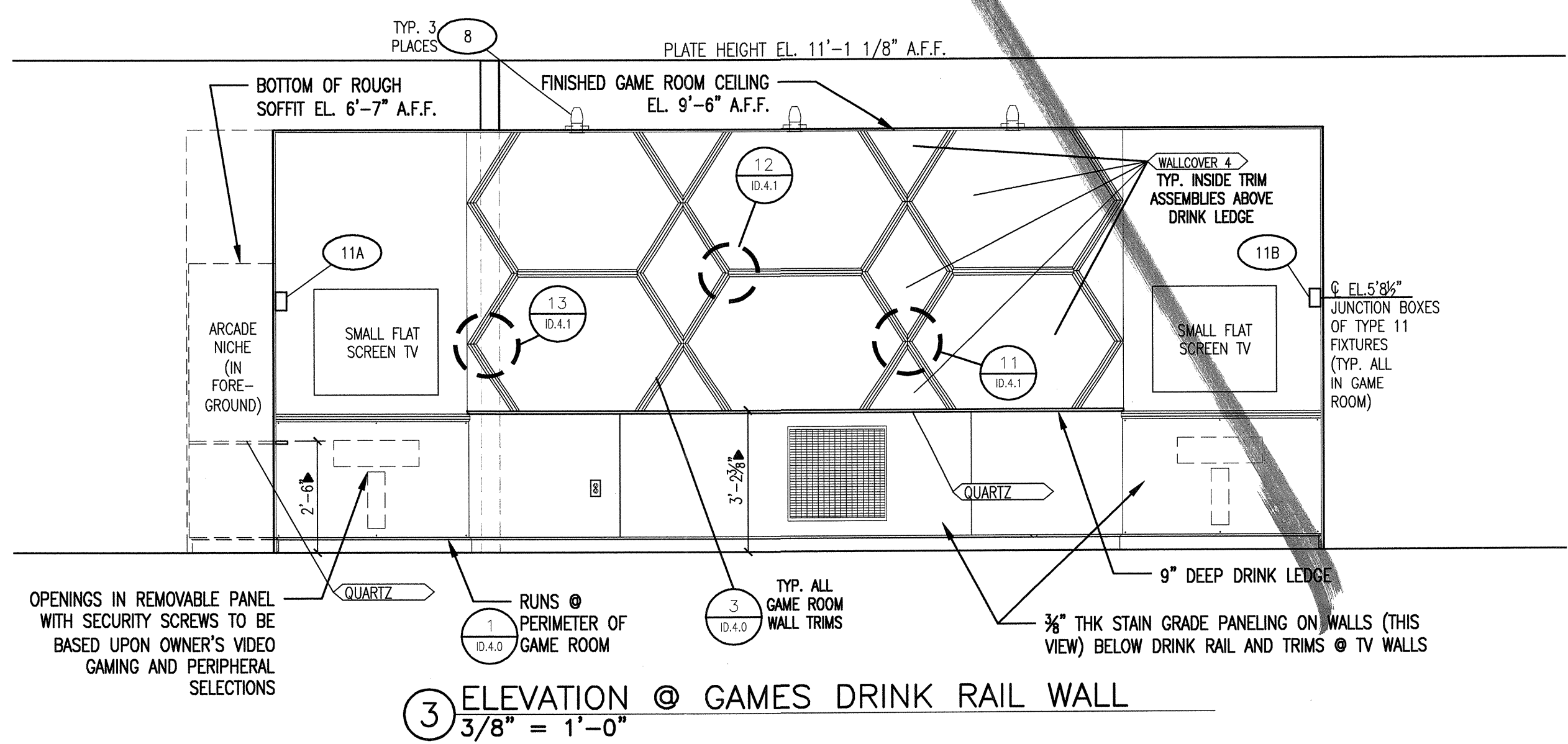
GENERAL SECTIONS & ELEVATION @ GAMES



1 SECTION THRU CLUB, CORRIDOR & LEASING  
3/8" = 1'-0"



2 SECTION THRU LEASING, CORRIDOR & CLUB  
3/8" = 1'-0"



3 ELEVATION @ GAMES DRINK RAIL WALL  
3/8" = 1'-0"

© 2012 M. FORD & ASSOCIATES INC. THIS DOCUMENT IS PUBLISHED AS AN INSTRUMENT OF SERVICE AND IS GIVEN IN CONFIDENCE. IT REMAINS THE PROPERTY OF M. FORD & ASSOCIATES, INC. THIS DOCUMENT AND THE INFORMATION CONTAINED WITHIN MAY NOT BE DUPLICATED OR DISCLOSED WITHOUT WRITTEN CONSENT OF M. FORD & ASSOCIATES, INC. HOUSTON, TEXAS



m. ford & associates  
interior design  
99 detersing street  
suite 165  
houston, tx 77007  
phone 713-630-0800  
fax 713-630-0814  
mford@mfordassociates.com  
www.mfordassociates.com

drawn by  
Queen of the World

SHEET NO.

ID.5