



THE BOARD OF LANDSCAPE ARCHITECTURE OF THE STATE OF TEXAS certifies that the undersigned is a duly licensed landscape architect in the State of Texas. The undersigned hereby certifies that the work shown on this plan was prepared by the undersigned or under the direct supervision and control of the undersigned. The undersigned is not a partner, associate, or employee of any other person or firm who is not a duly licensed landscape architect in the State of Texas. The undersigned is not a partner, associate, or employee of any other person or firm who is not a duly licensed landscape architect in the State of Texas.

- REVISIONS
- 03 OCT 11 ASSESS NOTE ABOUT EXISTING VEGETATION TO REMAIN
 - 17 OCT 11 REVISED PLANT LIST DUE TO BUILDING REVISIONS
 - 31 OCT 11 REALIGNED TREES TO WORK WITH EXISTING TREES ON ADJACENT PROPERTY PER CITY COMMENTS REVISED PLANT LIST
 - 07 FEB 12 REVISED PLANT LIST

26 APR 12 REVISED PLANT LIST

Keller Springs Lofts
EMBREY PARTNERS, LTD
ADDISON, TEXAS

SCALE

1" = 20'-0"

DATE

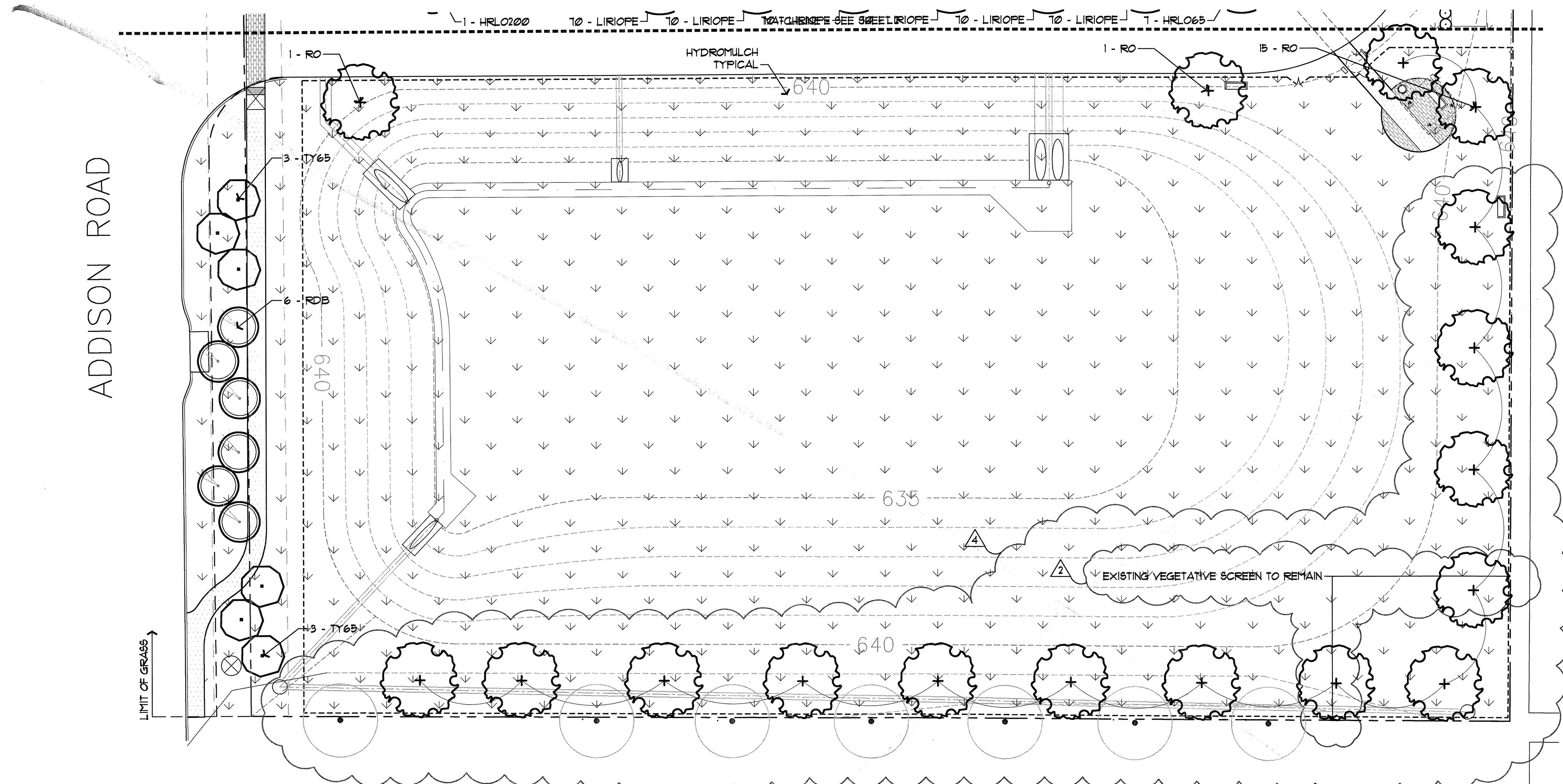
19 AUG 2011

TITLE

LANDSCAPE

SHEET

3L OF 6



GROUNDCOVERS / PERENNIALS						
QUANTITY	SYMBOL	CALLOUT	COMMON NAME	SCIENTIFIC NAME	SIZE AND CONDITION	
107	[Symbol]		AUTUMN FERN	Dryopteris erythrosora	1 gallon at 18" o.c., plant in shade	
45	[Symbol]		WOOD FERN	Dryopteris normalis	1 gallon at 18" o.c., 12" HT/12" spread	
6870	[Symbol]		1 GAL. LIRIOPE	Liriope muscari 'Majestic'	1 gallon at 12" o.c.	
460	[Symbol]		MEXICAN PETUNIA	Ruellia brittoniana 'Katie'	1 gallon at 12" O.C.	
880	[Symbol]		SEASONAL COLOR		4" pots at 8" o.c., as selected by owner	
5,165	[Symbol]		1 GAL. ASIAN	Asian Jasmine	Trachelopernum asiaticum	1 gallon at 12" o.c.
8	[Symbol]		SHORE	Shore Juniper	Juniperus conferta 'Blue Pacific'	3 gallon at 15' o.c., full pot
10	[Symbol]		PROSTRATE ROSEMARY	Rosmarinus officinalis 'Prostratus'	1 gallon, 6" HT/12" spread	

VINES				
QUANTITY	SYMBOL	COMMON NAME	SCIENTIFIC NAME	SIZE AND CONDITION
8	[Symbol]	Coral Honeysuckle	Lonicera sempervirens	5 gallon, 36" Ht. staked, attach to column/fence
1	[Symbol]	Evergreen Wisteria	Millitia reticulata	5 gallon, 36" Ht. staked, attach to column/fence

TURF GRASS				
QUANTITY	CALLOUT	COMMON NAME	SCIENTIFIC NAME	SIZE AND CONDITION
34,000	SF. SOD	Common Bermuda Grass	Cynodon dactylon	Solid sod
64,000	SF. HYDRO	Common Bermuda Grass	Cynodon dactylon	Hydromulch - refer to specifications

MISCELLANEOUS		
QUANTITY	CALLOUT	DESCRIPTION
692	LF. EDGE	LF. Steel edge 1/8" x 4" with 12" stakes, green in color
75	CRUSHED GRANITE	SF 3" depth crushed granite with filter fabric

- | NOTES | |
|-------|---|
| 1. | Landscape Contractor is responsible for verification of all plant quantities. |
| 2. | Adjustments in actual location of plant material may be necessary due to existing field items (air conditioners, transformers, etc.) |
| 3. | Full bed preparation typical. Reference specifications. |
| 4. | Landscape Contractor to provide a unit cost (including installation) for ALL items. |
| 5. | Verify location of all utility lines prior to installation. Field adjust for general intent if conflict exists. |
| 6. | Landscape Contractor to provide a separate cost for a one year maintenance program as outlined in specifications. |
| 7. | When the same species of trees are paired or grouped in 3 or more, they should be matched in size, shape, growth characteristics, etc. |
| 8. | Landscape Contractor is responsible for the calculation of all sod or hydromulch areas. Verify locations with owner. |
| 9. | Plant material availability shall be confirmed by Landscape Contractor prior to bidding. Should specified material not be available, the Owner and Landscape Architect shall be notified prior to bid date. |
| 10. | The Landscape Contractor shall not eliminate, substitute, and/or downsize plant material without prior approval of the Owner and Landscape Architect. Minimum standards and requirements of the City Landscape Submittal Plan must be maintained. |
| 11. | Deep 'V' cut around all planting beds to separate sod from bed if no steel edging is specified. |
| 12. | Landscape Contractor to provide potting soil, filter fabric, drainage base, etc. as necessary for pots. Pots by others. |

REFERENCE SHEET 6L FOR PLANTING SPECIFICATIONS.

LARGE TREES				
QUANTITY	SYMBOL/CALLOUT	COMMON NAME	SCIENTIFIC NAME	SIZE & CONDITION
4	SG	Fruitless Sweet Gum	Liquidambar styraciflua 'Rotundiloba'	Nursery grown, 3' cal. min, 12' HT/4'-6' spread, B+B
17	RO	Shumard Red Oak	Quercus shumardii	Nursery grown, 3' cal. min, 12' HT/6' spread, B+B, straight trunk
18	HRL065	Live Oak 'Highrise'	Quercus virginiana 'Highrise'	Nursery grown, 3' cal. min, 13' HT/6' spread, B+B, single trunk
26	HRL0200	Live Oak 'Highrise'	Quercus virginiana 'Highrise'	Nursery grown, 4' cal. min, 15' HT/7' spread, B+B, single trunk
55	HRL0200	Live Oak 'Highrise'	Quercus virginiana 'Highrise'	Nursery grown, 5' cal. min, 18' HT/10' spread, B+B, single trunk

SHRUBS				
QUANTITY	CALLOUT	COMMON NAME	SCIENTIFIC NAME	SIZE AND CONDITION
140	DA	Edward Goucher Abella	Abella grandiflora 'Edward Goucher'	5 gallon, 15' Ht/15' spread, 2' o.c.
254	DBH	Dwarf Burford Holly	Ilex cornuta 'Burfordii nana'	5 gallon, 18' Ht/15' spread, 3' o.c.
161	DBHT	Dwarf Burford Holly	Ilex cornuta 'Burfordii nana'	7 gallon, 30" Ht/20" spread, 3' o.c.
114	CH	Carlesea Holly	Ilex cornuta 'Carlesea'	5 gallon, 12' Ht/18' spread
2	NRST	Nellie R. Stevens Holly	Ilex cornuta 'Nellie R. Stevens'	7 gallon, 3' Ht. pyramidal form, 24" at base, matching specimens, 3' o.c.
950	DYH	Dwarf Yaupon Holly	Ilex vomitoria 'Nana'	5 gallon, 12' Ht/12' spread, 2' o.c.
6	BPJ	Blue Point Juniper	Juniperus chinensis 'Blue Point'	7 gallon, 36" Ht/18" spread, full, 3' o.c.
46	LOR	Plum Delight Fringe Flower	Loropetalum chinense 'Plum Delight'	5 gallon, 18" Ht/18" spread, 3' o.c.
2	DMG	Maiden Grass, Dw.	Miscanthus sinensis 'Adagio'	3 gallon, 18" Ht/12" spread, 2'-6" o.c.
16	MG	Maiden Grass	Miscanthus sinensis 'Gracillimus'	5 gallon, 24" Ht/24" spread, 3'-0" o.c.
13	DUM	Dwarf Southern Wax Myrtle	Myrica pauciflora	5 gallon, 24" Ht/18" spread, 3' o.c.
17	DUMT	Dwarf Southern Wax Myrtle	Myrica pauciflora	7 gallon, 30" Ht/20" spread, 3' o.c.
480	HDN	Harbour Dwarf Nandina	Nandina domestica 'Harbour Dwarf'	3 gallon, 5' Ht/3' spread
11	DFG	Dwarf Fountain Grass	Pennisetum alopecuroides 'Hamien'	3 gallon, 12" Ht/12" spread, 2' o.c.
30	YEWI	Japanese Yew	Fodocarpus macrophyllus	7 gallon, 36" Ht/18" spread
155	DIH	White Indian Hawthorn	Raphiolepis indica 'Clara'	5 gallon, 15" Ht/15" spread, 2' o.c.
40	MFG	Mex. Feathergrass	Stipa tenuissima	1 gallon, 12" Ht/12" spread, 15" o.c.
6	8Y	Soft Yucca	Yucca gloriosa	5 gallon, 18" Ht/12" spread, 3' o.c.
161	GLIR	Giant Liriope	Liriope muscari 'gigantea'	1 gallon, pot to pot.

ORNAMENTAL TREES				
QUANTITY	SYMBOL/CALLOUT	COMMON NAME	SCIENTIFIC NAME	SIZE AND CONDITION
13	RB30	River Birch	Betula nigra	30 gallon, multi-trunk, 3 trunk min, 12' Ht/6' spread, container grown
12	RBD	Texas Red Bud	Cercis canadensis var. texana	10' Ht/5' spread, 3" caliper min, B4B.
13	EPH30	Tree East Palatka Holly	Ilex attenuata 'East Palatka'	30 gallon, 8' Ht/4' spread, single trunk, tree form, container grown, berried
17	TY65	Yaupon Holly	Ilex vomitoria	10' Ht/5' spread, 3" caliper min, multi-trunk, B4B, female.
4	TCHW30	White flowering Crape Myrtle	Lagerstroemia indica 'Natchez'	30 gallon, 8' Ht/5' spread, 5 trunk minimum, container grown
7	TCHR30	Red flowering Crape Myrtle	Lagerstroemia indica 'Toto'	30 gallon, 8' Ht/5' spread, 5 trunk minimum, container grown
7	TCHP100	Pink flowering Crape Myrtle	Lagerstroemia indica 'Tuscarora'	100 gallon, 12' Ht/6' spread, 5 trunk minimum, container grown

