

Embrey Builders, LLC
 1025 N. E. Loop 410, Suite 700
 San Antonio, TX 78209
 Ph: (210) 824-6044 Fax: (210) 824-7656

RFI

To: Enviro Design Landscape
 7424 Greenville Ave, Suite 200
 Dallas, TX 75231
 Ph: 214/987-3010 Fax: 214/987-3015

RFI #: 227
 Date: 5/3/2013
 Job: EB-02 Keller Springs Lofts
 Phone: 877-777-5115

CC:

Subject: 4" Diameter oaks inside the swimming pool courtyard planter areas

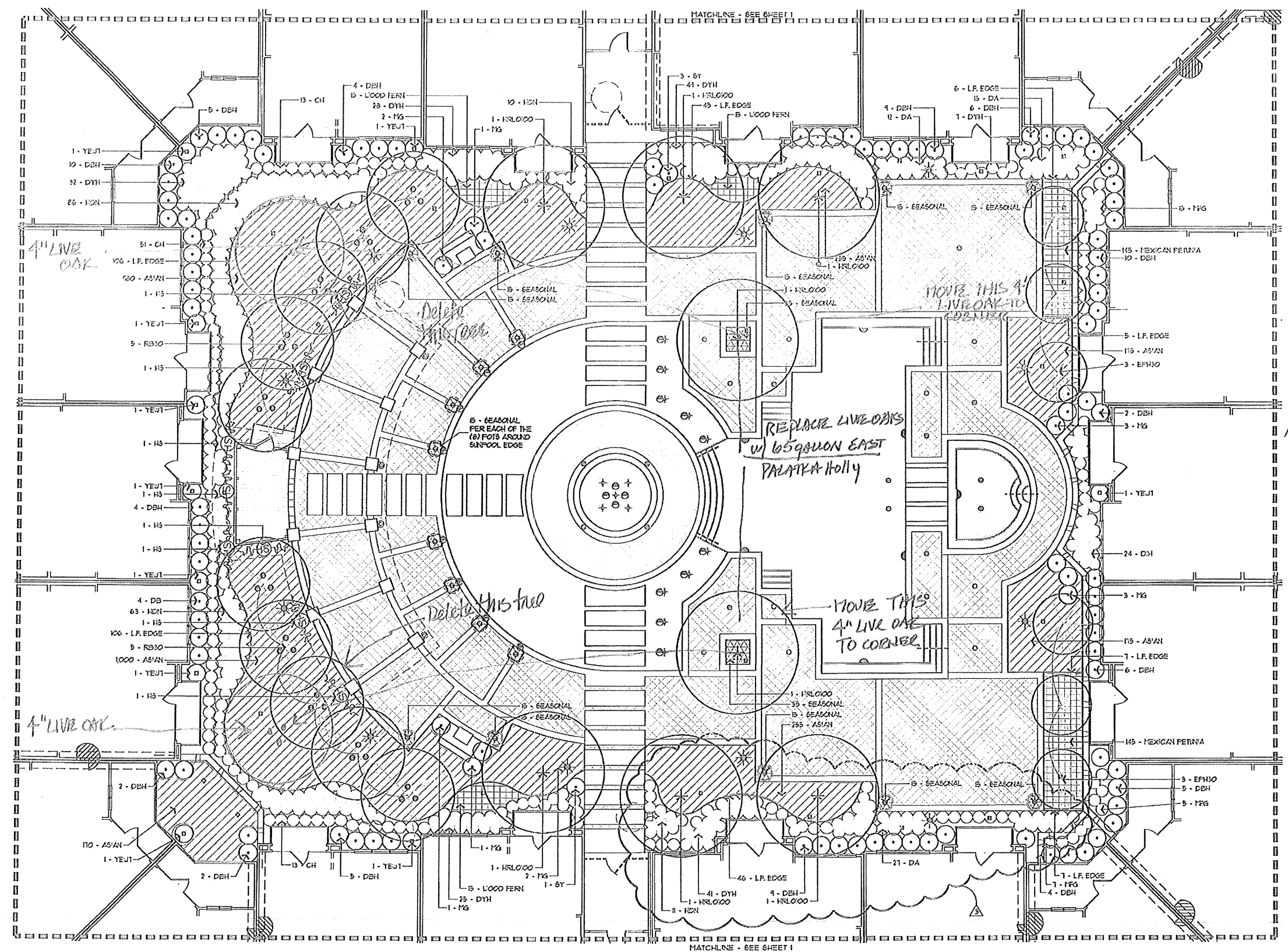
Drawing: 5L
 Cost Impact: None
 Spec Section:
 Schedule Impact: None

Request: Date Required: 5/10/2013
 We would like you to approve the attachment changes to the pool courtyard landscaping. We had a concern about the size of the root ball on the two live oaks at the inside deck planter areas. The opening in the deck is only 4' x 4' and the root balls on these 4" diameter oaks are quite large. Also in the years to come, as the oak grows, we were concerned with the deck slab cracking. Unless you foresee a problem, please approve.
Requested by: Bryan Pickler
 Embrey Partners, Ltd.

Response: We have looked at our drawings and are fine with this change. Approved.

Answered by: Brian Arthur
 Company: Enviro Design
 Date: 05-03-13

RFI #227



Approximate Cost:
 Not add: 1000.00

REFERENCE SHEET 3L FOR PLANT MATERIALS LIST AND SHEET 6L FOR PLANTING SPECIFICATIONS.

Enviro Design Landscape
 LANDSCAPE ARCHITECTURE
 1025 N. E. Loop 410, Suite 700
 San Antonio, TX 78209
 Ph: (210) 824-6044 Fax: (210) 824-7656

Keller Springs Lofts
 EMBREY PARTNERS, LTD
 ADDISON, TEXAS

SCALE:
 1/8" = 1'-0"

DATE:
 19 AUG 2011

TITLE:
 LANDSCAPE

SHEET:
 5L of 6