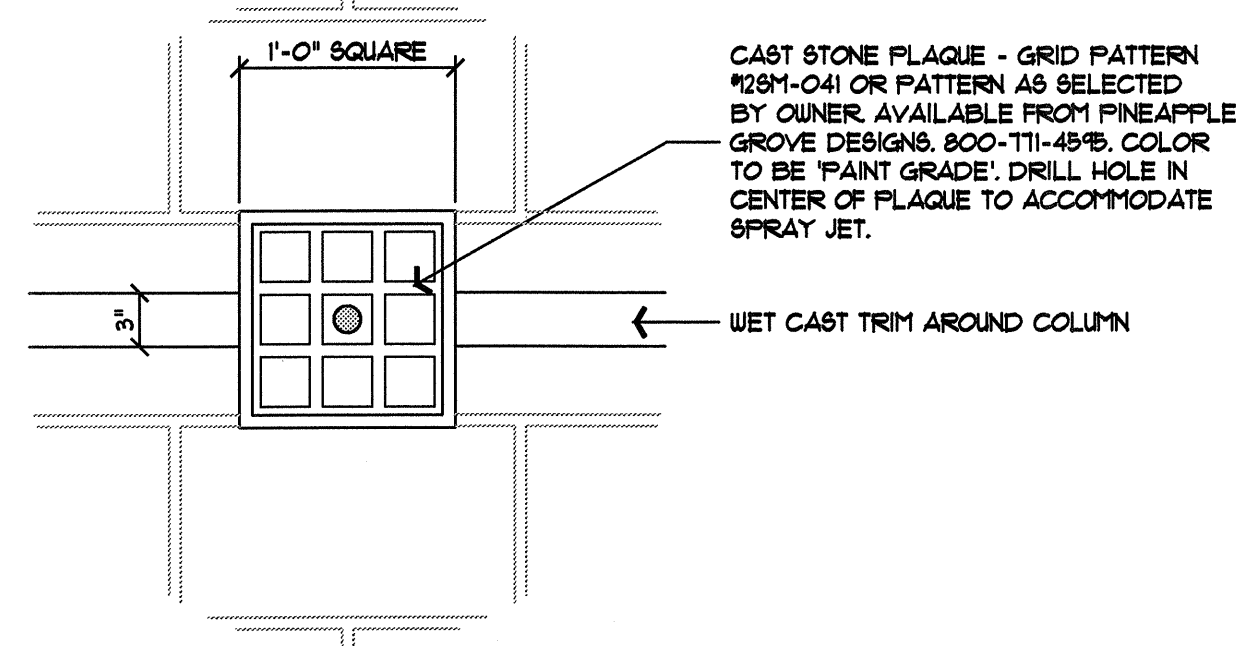


ALTERNATE POOL/FOUNTAIN TILE SIZE:  
IF 2x2 TILE IS NOT AVAILABLE, SUBSTITUTE  
3x3 FIELD SERIES, BLACK, #MAS 3x3 BLA,  
AVAILABLE FROM MASTER TILE, 888-461-8453.  
GROUT COLOR TO REMAIN CHARCOAL.

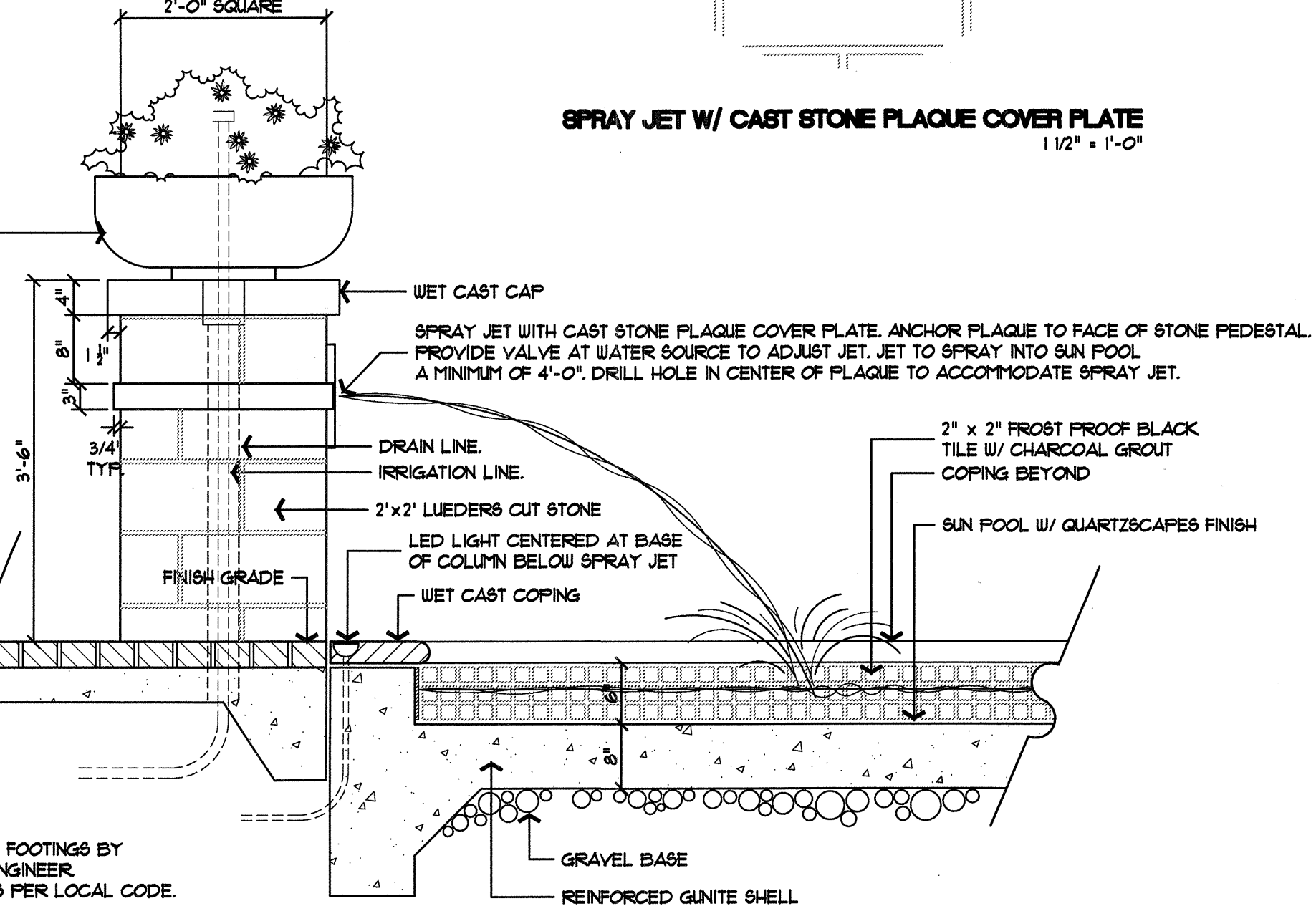


**SPRAY JET W/ CAST STONE PLAQUE COVER PLATE**  
1/2" = 1'-0"

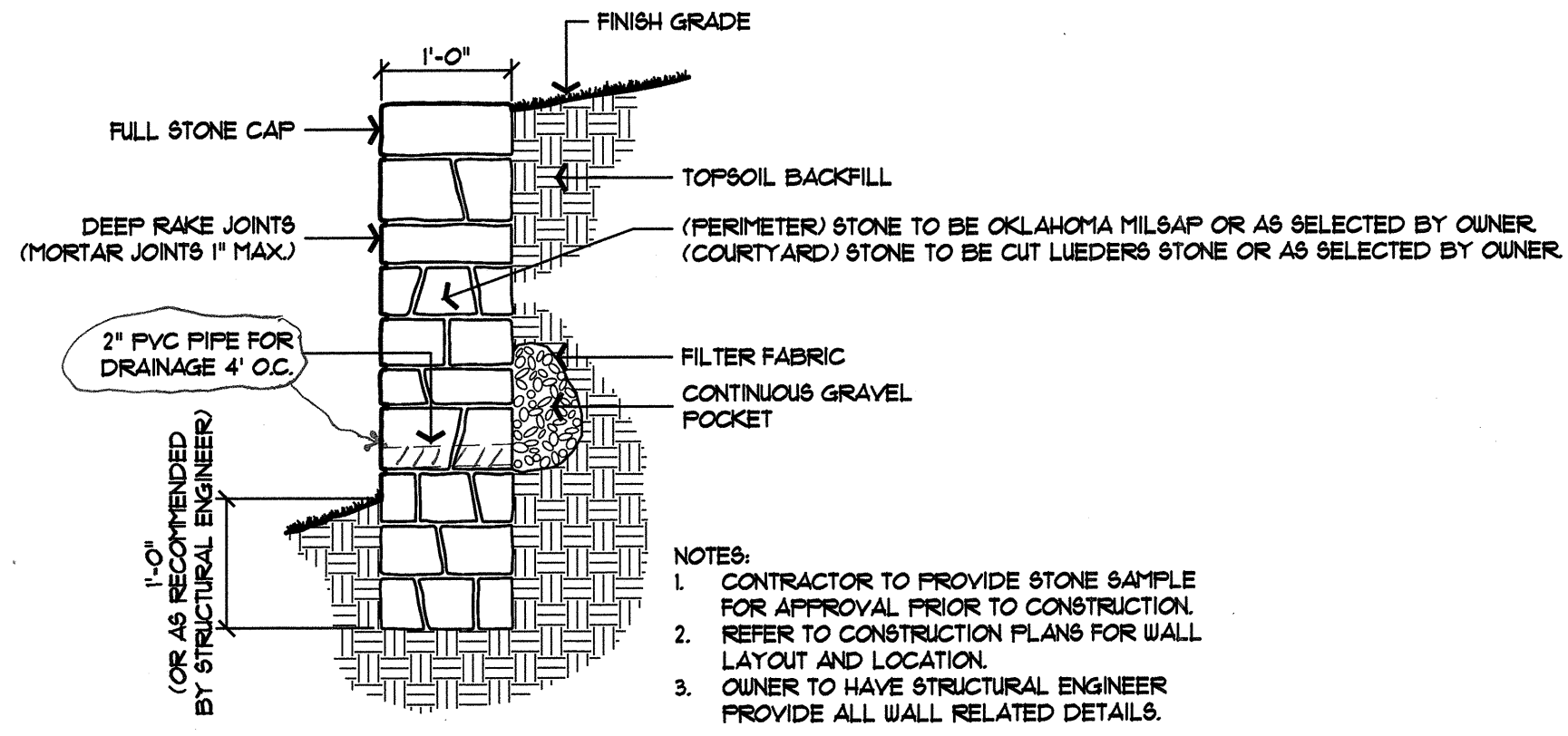
(8) SEASONAL COLOR POT W/IRRIGATION LINE. GALLERY BOWL PLANTER #GB-30A, AVAILABLE FROM PLANTCONTAINERS.COM, 866-342-3330. COLOR TO BE WEATHERED GRAYSTONE. PROVIDE HOLE FOR DRAINAGE AND IRRIGATION LINE. SHIM UP POT 1/4" FOR DRAINAGE. PROVIDE DRAIN INLET CENTERED BELOW POT IN COLUMN.

- IRRIGATION LINE NOTES:  
1. 1/2" COPPER PIPE TYPE M1 TYPICAL.  
2. EXTEND COPPER PIPE 6" ABOVE TOP OF POT AND CAP.  
3. EXTEND COPPER PIPE OUT AWAY FROM POT AND/OR PEDESTAL BASE (TO NEAREST PLANTING BED, 12" MINIMUM) AND CAP LINE. PLACE STAKE OR FLAG TO MARK LOCATION OF PIPE LINE TYPICAL.  
4. REFERENCE PLANS FOR POT AND/OR PEDESTAL LOCATIONS.  
5. DRILL HOLE IN POT FOR IRRIGATION LINE AND DRAINAGE.  
6. IRRIGATION LINE FOR POTS ON GRADE TO BE SIMILAR TO THIS DETAIL.  
7. REFERENCE PLAN FOR DECK DRAIN LOCATED BELOW POT, IF APPLICABLE.

- NOTES:  
1. ALL STRUCTURAL DESIGN AND FOOTINGS BY STRUCTURAL ENGINEER/POOL ENGINEER.  
2. GROUND SPRAY JET/POOL AS PER LOCAL CODE.

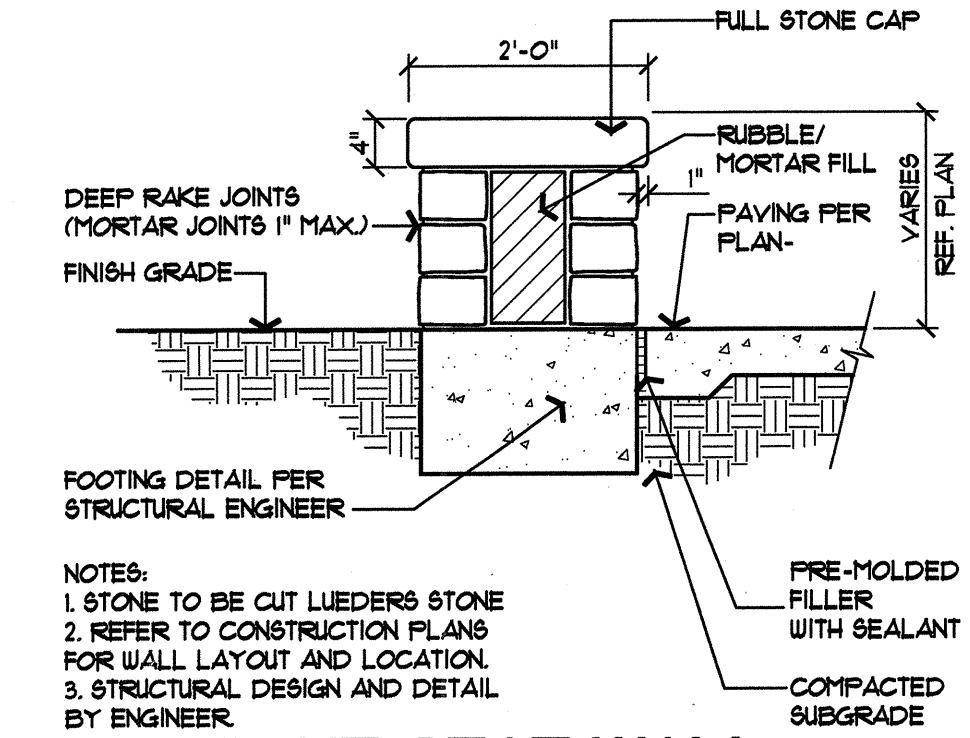


**A LUEDERS CUT STONE COLUMN W/ SPRAY JET AND POT (WITH IRRIGATION LINE)**  
3/4" = 1'-0"



- NOTES:  
1. CONTRACTOR TO PROVIDE STONE SAMPLE FOR APPROVAL PRIOR TO CONSTRUCTION.  
2. REFER TO CONSTRUCTION PLANS FOR WALL LAYOUT AND LOCATION.  
3. OWNER TO HAVE STRUCTURAL ENGINEER PROVIDE ALL WALL RELATED DETAILS.

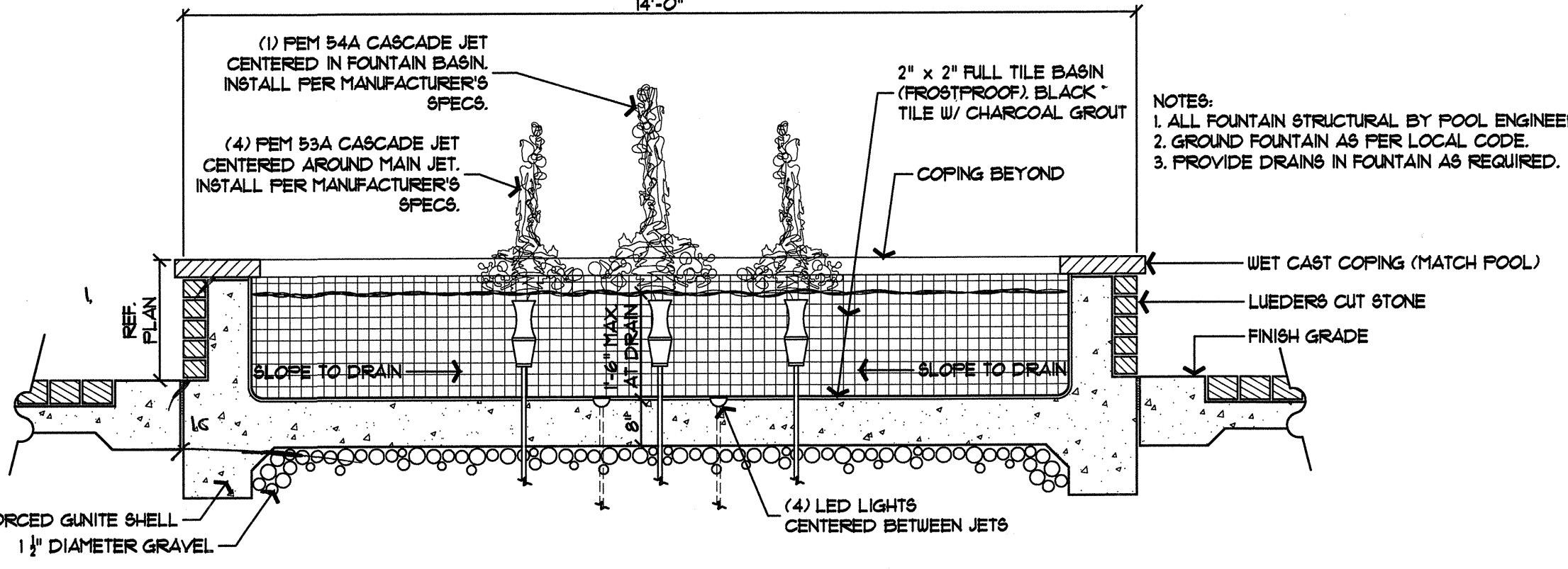
**C STONE WALL (1' TO 3' HIGH)**  
3/4" = 1'-0"



- NOTES:  
1. STONE TO BE CUT LIEDERS STONE.  
2. REFER TO CONSTRUCTION PLANS FOR WALL LAYOUT AND LOCATION.  
3. STRUCTURAL DESIGN AND DETAIL BY ENGINEER.

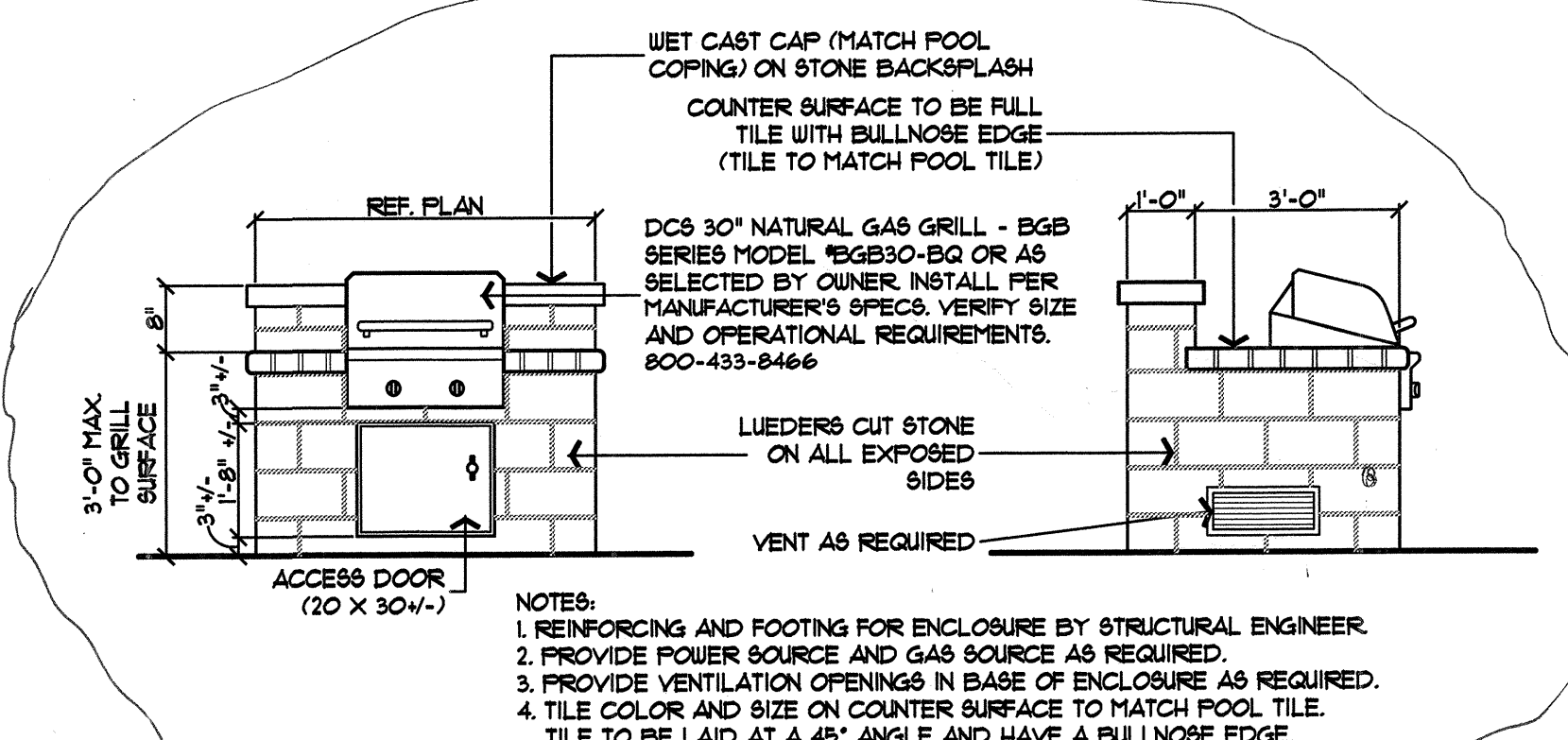
**D STONE SEAT WALL**  
3/4" = 1'-0"

REF. 4C



- NOTES:  
1. ALL FOUNTAIN STRUCTURAL BY POOL ENGINEER.  
2. GROUND FOUNTAIN AS PER LOCAL CODE.  
3. PROVIDE DRAINS IN FOUNTAIN AS REQUIRED.

**E FOUNTAIN BASIN AT POOL**  
1/2" = 1'-0"

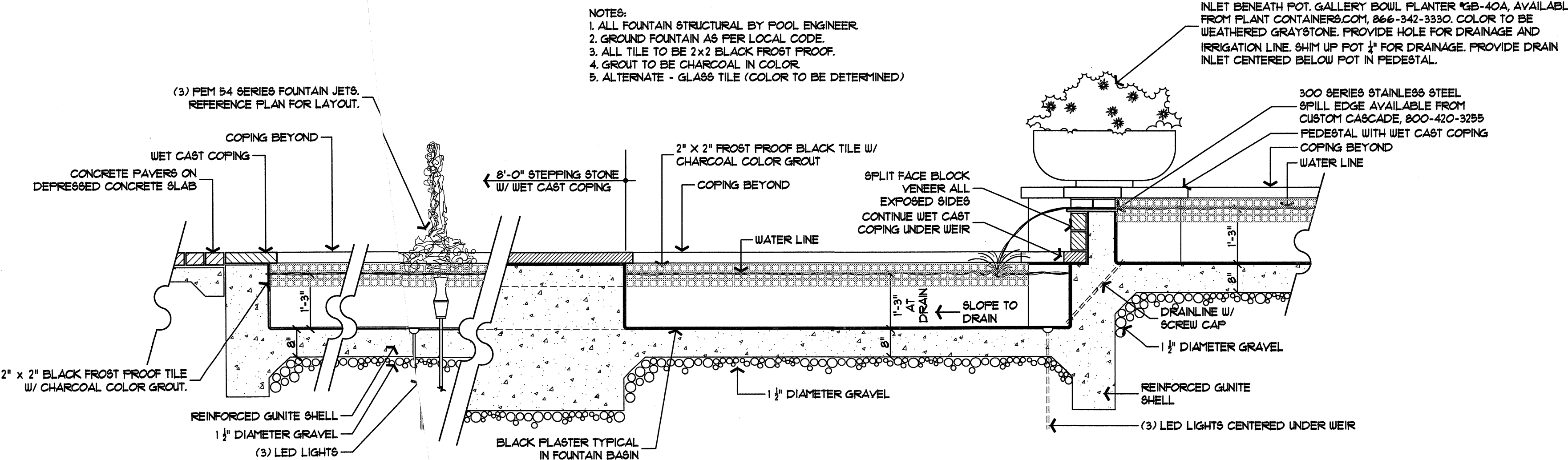


- NOTES:  
1. REINFORCING AND FOOTING FOR ENCLOSURE BY STRUCTURAL ENGINEER.  
2. PROVIDE POWER SOURCE AND GAS SOURCE AS REQUIRED.  
3. PROVIDE VENTILATION OPENINGS IN BASE OF ENCLOSURE AS REQUIRED.  
4. TILE COLOR AND SIZE ON COUNTER SURFACE TO MATCH POOL TILE. TILE TO BE LAID AT A 45° ANGLE AND HAVE A BULLNOSE EDGE.

**F GAS GRILL IN LUEDERS CUT STONE ENCLOSURE**  
3/8" = 1'-0"

REF. 15

**B FOUNTAIN BASIN/WEIR/STEPPING STONE**  
1/2" = 1'-0"



- NOTES:  
1. ALL FOUNTAIN STRUCTURAL BY POOL ENGINEER.  
2. GROUND FOUNTAIN AS PER LOCAL CODE.  
3. ALL TILE TO BE 2x2 BLACK FROST PROOF.  
4. GROUT TO BE CHARCOAL IN COLOR.  
5. ALTERNATE - GLASS TILE (COLOR TO BE DETERMINED).

(2) SEASONAL COLOR POT W/ IRRIGATION LINE AND DRAIN INLET BENEATH POT. GALLERY BOWL PLANTER #GB-40A, AVAILABLE FROM PLANTCONTAINERS.COM, 866-342-3330. COLOR TO BE WEATHERED GRAYSTONE. PROVIDE HOLE FOR DRAINAGE AND IRRIGATION LINE. SHIM UP POT 1/4" FOR DRAINAGE. PROVIDE DRAIN INLET CENTERED BELOW POT IN PEDESTAL.