

REVISIONS

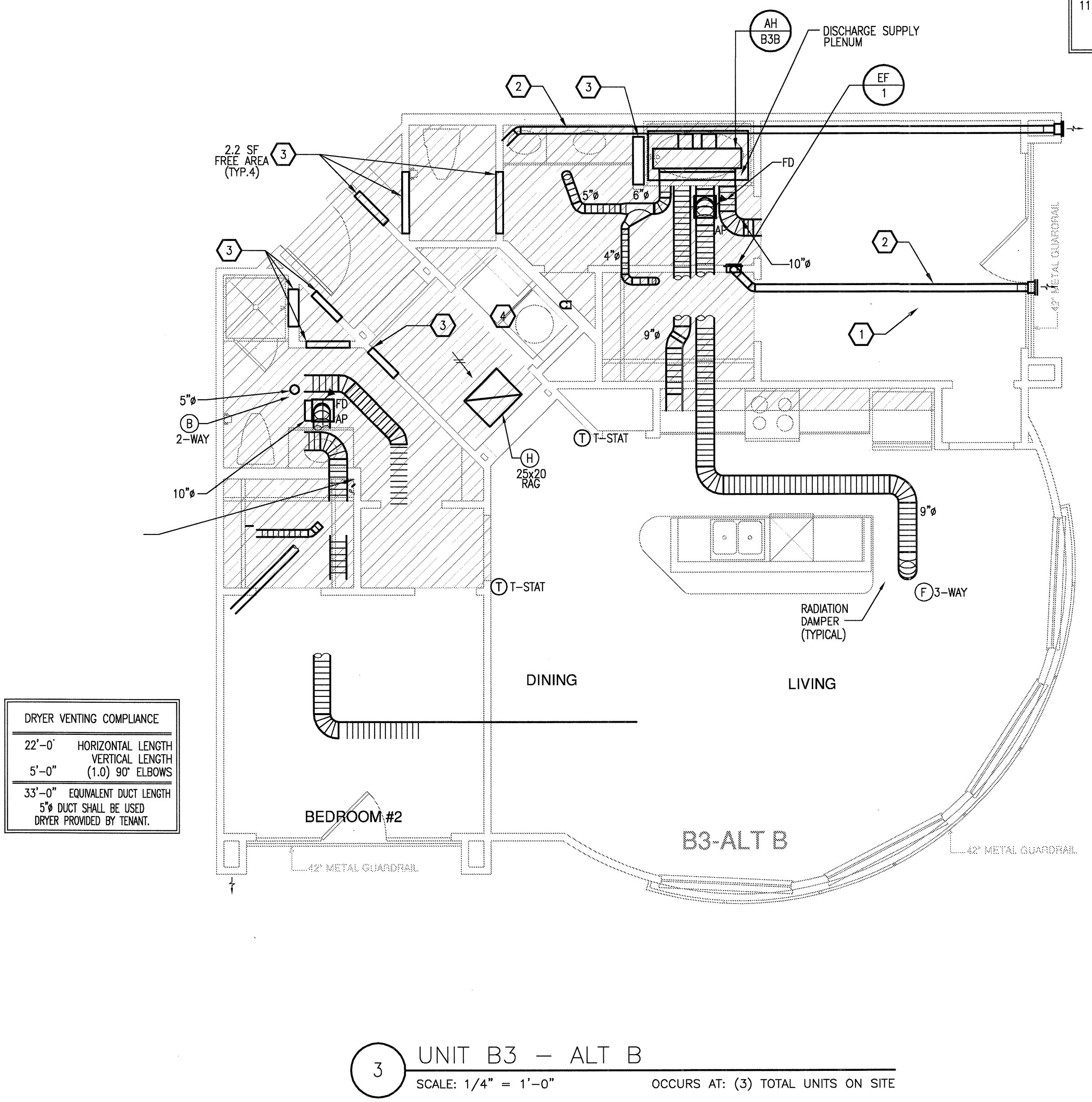
1	9-2-2011	DESIGN REVISIONS
2	9-13-2011	ANSI/FHA COMMENTS
3	9-23-2011	DESIGN REVISIONS
4	10-17-2011	CONSTRUCTION ISSUE

KELLER SPRINGS LOFTS

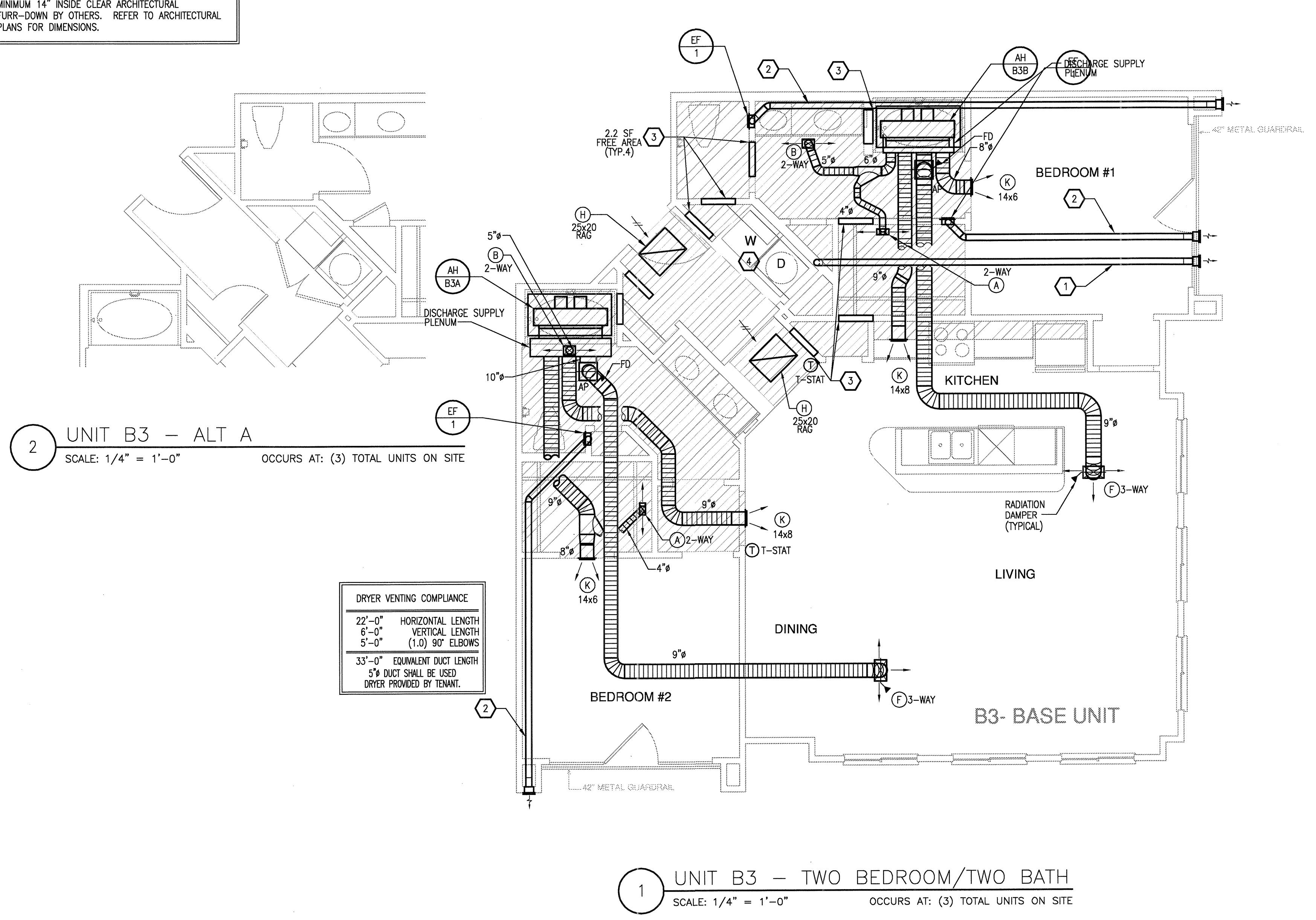
LOFT APARTMENTS IN ADDISON, TEXAS

- GENERAL NOTES**
- COORDINATE DRYER VENT WALL BOX INSIDE WALL WITH PLUMBING AND ELECTRICAL DISCIPLINES PRIOR TO INSTALLATION.
 - MECHANICAL CONTRACTOR SHALL COORDINATE ALL DUCTWORK AND EQUIPMENT IN BATHROOMS WITH PLUMBING.
 - KITCHEN RANGE HOOD IS RECIRCULATING.
 - COORDINATE ALL WALL CAP AND SOFFIT VENT LOCATIONS WITH ARCHITECTURAL AND STRUCTURAL DRAWINGS.
 - CONTRACTOR SHALL COORDINATE DUCTWORK ROUTING THROUGH 18-INCH DEEP OPEN WEB STRUCTURE AND ATTIC SPACE TO AVOID STRUCTURAL AND ARCHITECTURAL CONFLICT.
 - ALL SOFFIT VENTS AND WALL CAPS SHALL HAVE BACKDRAFT DAMPERS. TOILET EXHAUST SHALL INCLUDE INSECT SCREEN.
 - COORDINATE ALL TOILET EXHAUST FANS WITH WALL CABINETS AND MEDICINE CABINETS. FANS LOCATED AT WALL ADJACENT TO TOILETS SHALL BE MOUNTED A MINIMUM OF 14-INCH AWAY FROM THE WALL THE TOILET IS MOUNTED TO AVOID CONFLICT WITH THE CABINET OVER THE TOILET.
 - RETURN AIR TRANSFER OPENINGS SHALL BE IN FUR-DOWN CEILING AREA, BELOW RATED CEILING, AND SHALL BE BETWEEN STUDS. STUDS SHALL GO TO STRUCTURE. OPENING SHALL BE MAINTAINED IN WALL ABOVE FURR-DOWN FOR RETURN AIR PATH FROM FILTER GRILLE TO AIR HANDLING UNIT. REFER TO UNIT PLANS FOR EXACT LOCATIONS. MAINTAIN ALL FIRE RATINGS OF WALLS AROUND OPENINGS. SEE UNIT PLANS FOR MINIMUM FREE AREA OF OPENINGS.
 - MAINTAIN A MINIMUM OF 3'-0" HORIZONTALLY FROM EXHAUST TO ALL OPERABLE DOORS AND WINDOWS.
 - ROUTE TOILET EXHAUST AND DRYER DUCTWORK THROUGH 18-INCH OPEN WEB STRUCTURE. ROUTE DRYER AND TOILET EXHAUST DOWN TO WALL CAPS INTO FLOOR TRUSSES AT TOP LEVEL UNITS.
 - MINIMUM 14" INSIDE CLEAR ARCHITECTURAL FURR-DOWN BY OTHERS. REFER TO ARCHITECTURAL PLANS FOR DIMENSIONS.

- KEYNOTES (APPLIES TO THIS SHEET ONLY)**
- 5" DRYER EXHAUST VENT ROUTED TO EXTERIOR WALL CAP. ROUTE DOWN AT TOP LEVEL TO FLOOR BELOW.
 - 4" TOILET EXHAUST ROUTED TO EXTERIOR WALL CAP. ROUTE DOWN AT TOP LEVEL TO FLOOR BELOW.
 - TRANSFER AIR OPENING. SEE PLANS FOR MINIMUM FREE AREA REQUIRED IN FURRED DOWN PLENUM SPACE.
 - UNDERCUT DOORS (BY OTHERS) FOR DRYER TO PROVIDE 100 SQ. IN. OF TRANSFER AIR.



DRYER VENTING COMPLIANCE
22'-0" HORIZONTAL LENGTH
5'-0" VERTICAL LENGTH (1.0) 90° ELBOWS
33'-0" EQUIVALENT DUCT LENGTH
5" DUCT SHALL BE USED
DRYER PROVIDED BY TENANT.



DRYER VENTING COMPLIANCE
22'-0" HORIZONTAL LENGTH
6'-0" VERTICAL LENGTH (1.0) 90° ELBOWS
33'-0" EQUIVALENT DUCT LENGTH
5" DUCT SHALL BE USED
DRYER PROVIDED BY TENANT.