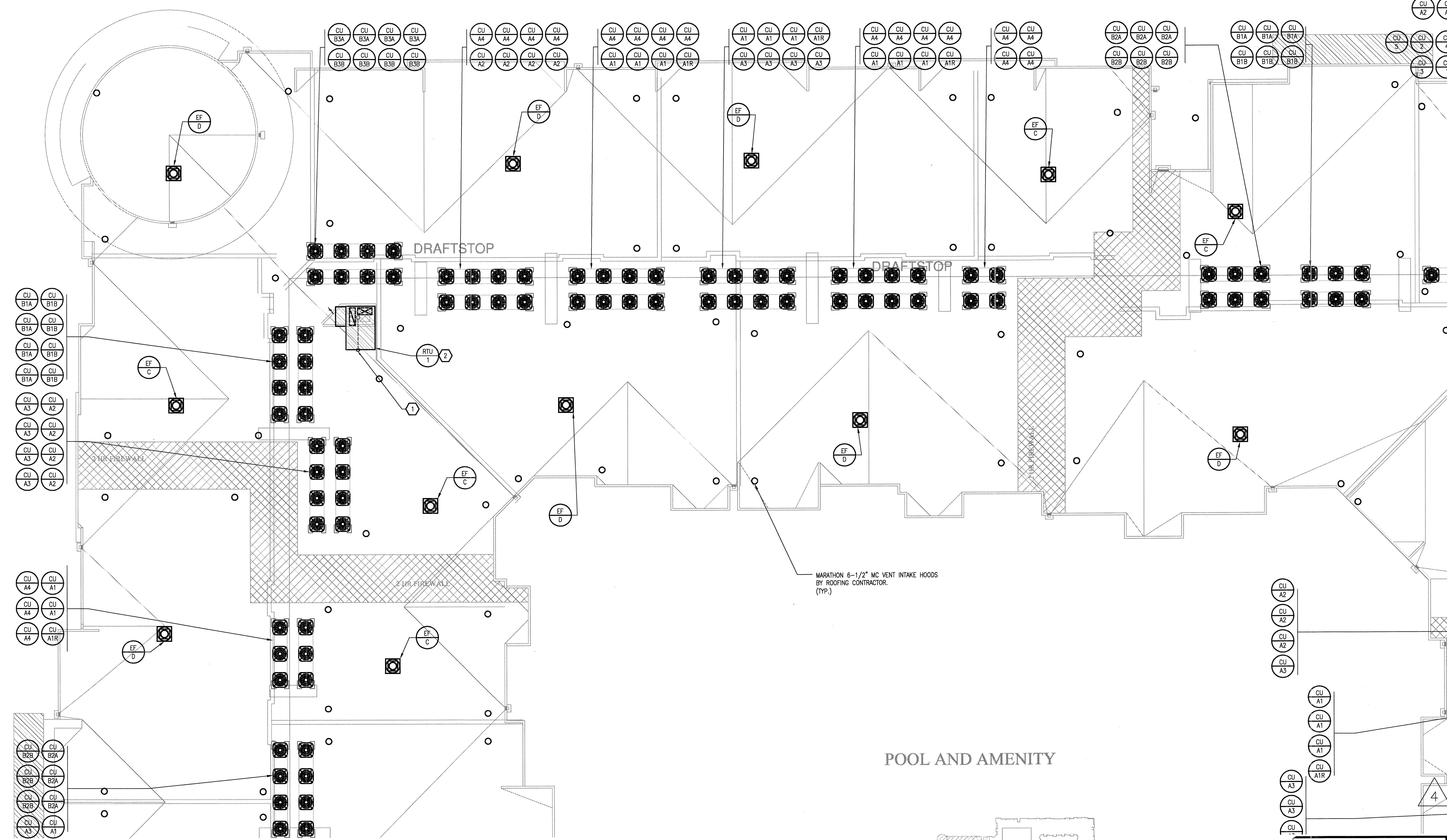


KEYNOTES: (APPLIES TO THIS SHEET ONLY)

- 1 ROUTE 1" CONDENSATE DRAIN TO HUB DRAIN BELOW ROOF. SEE PLUMBING PLANS FOR EXACT LOCATIONS
- 2 ALL OUTSIDE AIR INTAKES SHALL MAINTAIN 10'-0" FROM EXHAUST TERMINATIONS AND PLUMBING VENTS.

- NOTES:
- 1. INSTALL CONDENSERS ON CURB (BY OTHERS).
  - 2. THERE SHALL BE NO ROOF PENETRATIONS WITHIN 4'-0" OF A FIREWALL.
  - 3. COORDINATE REFRIGERANT LINESET HOODS AND LINESET ROUTING PRIOR TO CONSTRUCTION.
  - 4. ALL EQUIPMENT INSTALLED WITHIN 10'-0" OF A ROOF EDGE SHALL HAVE GUARDS TO COMPLY WITH 2009 IMC SECTION 304.11.

REVISIONS	
1	9-2-2011 DESIGN REVISIONS
2	9-13-2011 ANSI/FHA COMMENTS
3	9-23-2011 DESIGN REVISIONS
4	10-17-2011 CONSTRUCTION ISSUE



**KELLER SPRINGS LOFTS**  
LOFT APARTMENTS IN ADDISON, TEXAS

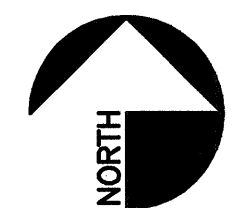
**BGO architects**  
4144 N. Central Expy.  
Suite 855  
Dallas, TX 75204  
214.520.8878  
bgoarchitects.com

DATE  
08-05-11

PROJECT  
11129

SHEET NUMBER  
**M-3.5A**  
ROOF PLAN  
DIVISION A  
MECHANICAL

**JSE** Jordan & Skala Engineers  
14240 Midway Road, Suite 350  
Dallas, TX 75244-5138  
Project Number - 111-0355 Texas Firm Registration # F-4990  
Drawn By: CHH Checked By: AHS



1 DIVISION 'A' ROOF PLAN  
SCALE: 1/8" = 1'-0"

