

| REVISIONS |                                 |
|-----------|---------------------------------|
| 1         | 9-2-2011 DESIGN REVISIONS       |
| 2         | 9-13-2011 ANSI/FHA COMMENTS     |
| 3         | 9-23-2011 DESIGN REVISIONS      |
| 4         | 10-17-2011 CONSTRUCTION ISSUE   |
| 5         | 12-21-2011 DESIGN REVISIONS     |
| 6         | 1-17-2012 DESIGN REVISIONS      |
| 7         | 2-15-2012 TRANSFORMER REVISIONS |
| 8         | 3-27-2012 CLUBHOUSE REVISIONS   |
| 9         | 4-17-2012 COORDINATION          |

**KELLER SPRINGS LOFTS**  
LOFT APARTMENTS IN ADDISON, TEXAS

|    |                             |
|----|-----------------------------|
| 10 | 5-15-2012 COORDINATION      |
| 11 | 5-30-2012 SITE COORDINATION |
| 12 | 6-01-12 LIGHTING REVISIONS  |
| 13 | 6-29-12 SITE COORDINATION   |
| 14 | 9-05-12 CLUB REVISIONS      |
| 15 | 4-19-13 EL. LOBBY REVISIONS |

**BGO architects**  
4144 N. Central Expy. Suite 855  
Dallas, TX 75204  
214.520.8878  
bgoarchitects.com

DATE  
08-05-11

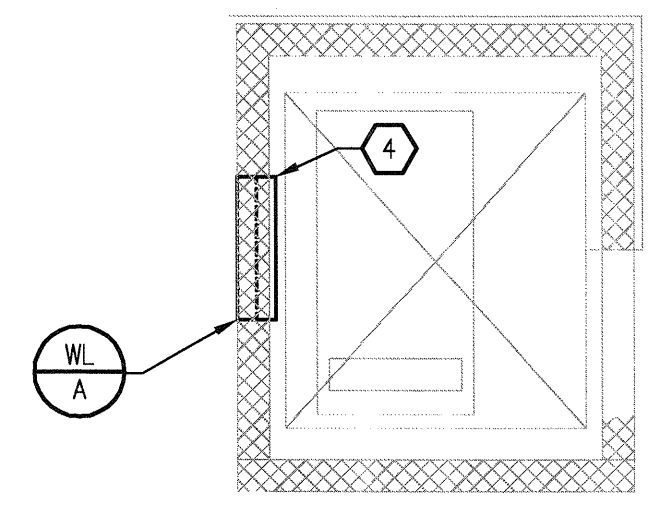
PROJECT  
11129

SHEET NUMBER

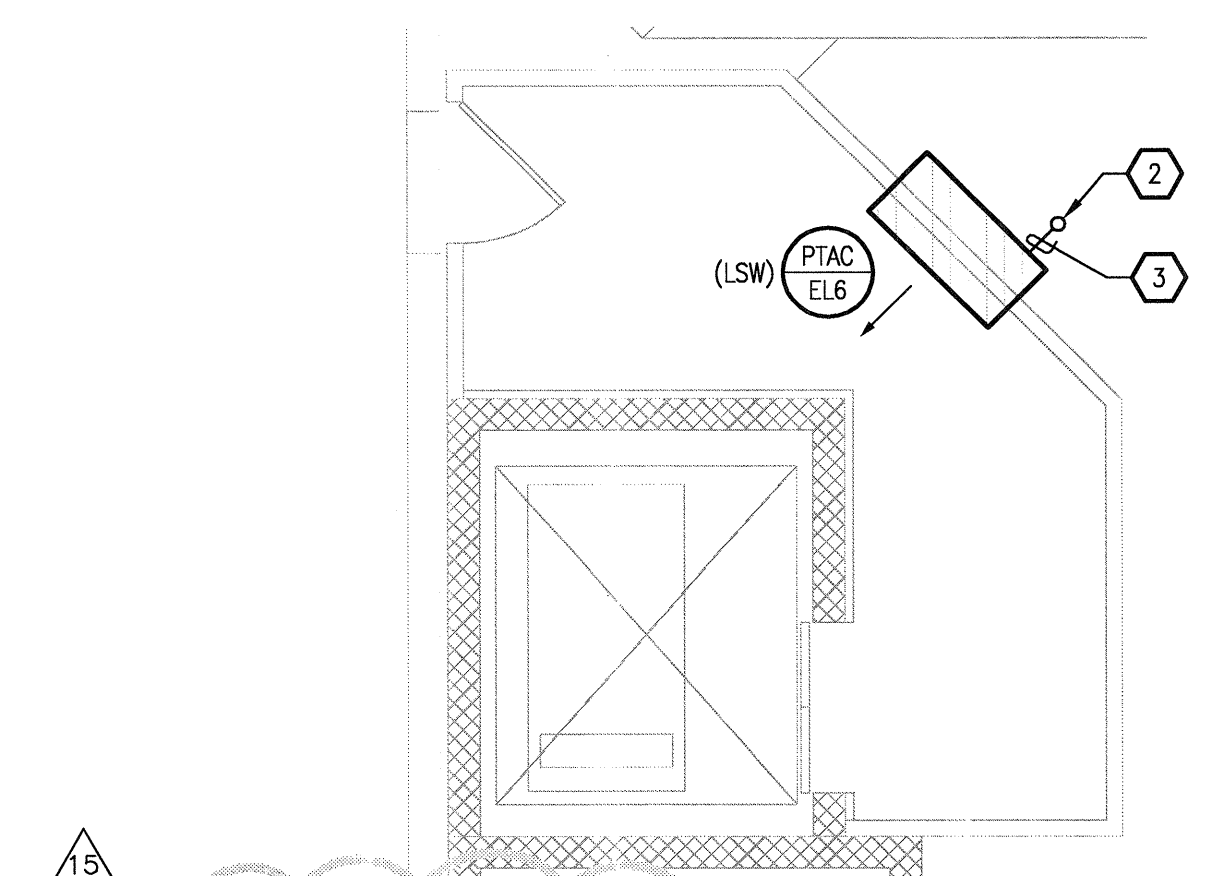
**M-3.6**  
LEVEL 6 & 7  
GARAGE  
MECHANICAL

**KEYNOTES:**

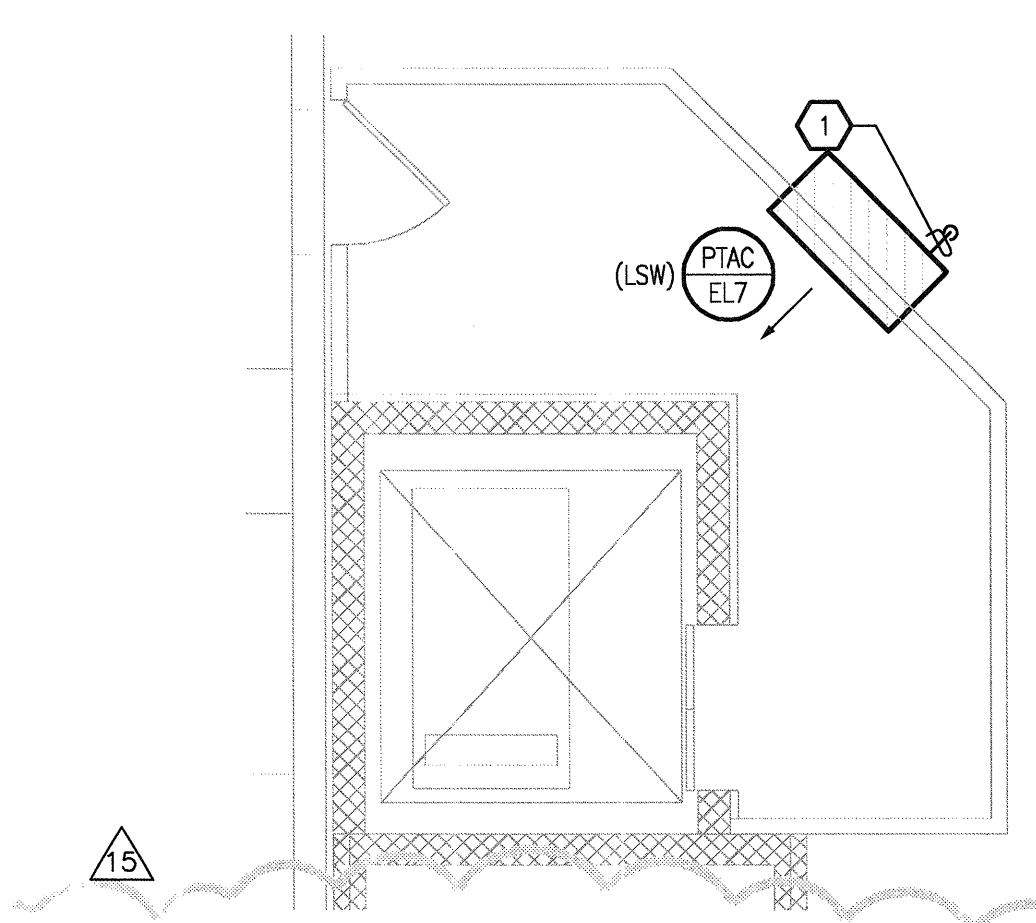
- 1 3/4"CD ROUTED DOWN TO FLOOR BELOW.
- 2 3/4"CD ROUTED FROM PTAC ABOVE. TIE CD FROM LEVEL 6 AND LEVEL 7 INTO A 1"CD RISER.
- 3 3/4"CD ROUTED FROM PTAC TO CD RISER. ROUTE RISER DOWN TO ROOF BELOW.
- 4 72x18 ELEVATOR SMOKE RELIEF LOUVER STUBBED INTO SIDE OF ELEVATOR SHAFT AND SEALED AIR & WATER TIGHT. MOUNT LOUVER 12" BELOW TOP OF HOISWAY. PROVIDE WITH MOTORIZED DAMPER INTERLOCKED TO FIRE ALARM. DAMPER SHALL FAIL IN THE OPEN POSITION.



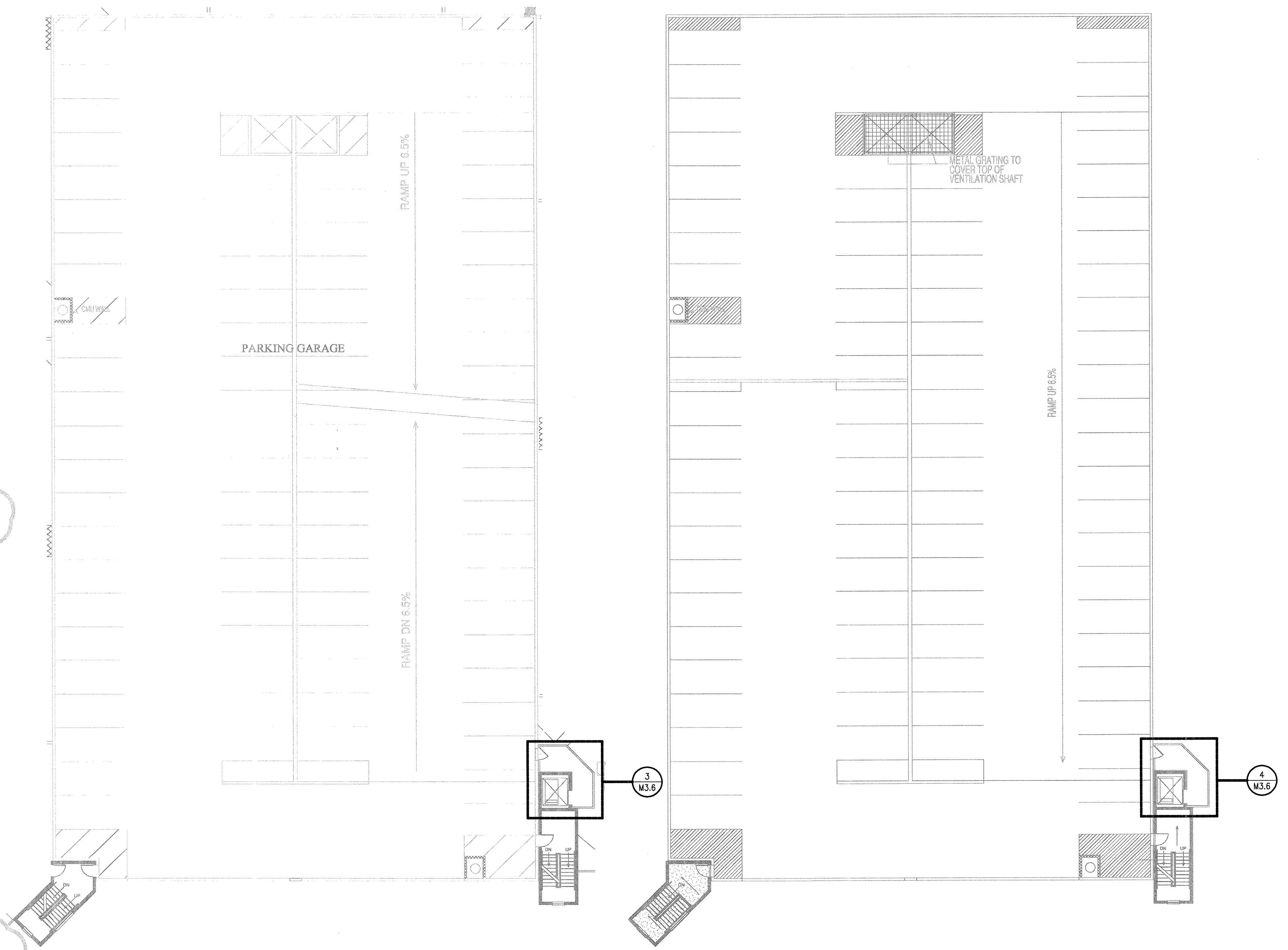
5 TOP OF ELEVATOR SHAFT — MECHANICAL  
SCALE: 1/4" = 1'-0"



3 6TH FLOOR ENLARGED ELEVATOR LOBBY — MECHANICAL  
SCALE: 1/4" = 1'-0"



4 7TH FLOOR ENLARGED ELEVATOR LOBBY — MECHANICAL  
SCALE: 1/4" = 1'-0"



1 6TH FLOOR GARAGE PLAN — MECHANICAL  
SCALE: 1/16" = 1'-0"

2 7TH FLOOR GARAGE PLAN — MECHANICAL  
SCALE: 1/16" = 1'-0"

**JSE** Jordan & Skala Engineers  
17835 N. Dallas Parkway, Suite 320  
Dallas, TX 75244-4607  
V: (469) 383-1616 F: (469) 383-1615  
Project Number - 113-0355 Texas Firm Registration # F-4990  
Drawn By: **MEK** Checked By: **KRM**