



REVISIONS		
1	9-2-2011	DESIGN REVISIONS
2	9-13-2011	ANSI/FHA COMMENTS
3	9-23-2011	DESIGN REVISIONS
4	10-17-2011	CONSTRUCTION ISSUE
5	12-21-2011	DESIGN REVISIONS
6	1-17-2012	DESIGN REVISIONS

**KELLER SPRINGS LOFTS**  
 LOFT APARTMENTS IN ADDISON, TEXAS

**BGO architects**  
 4144 N. Central Expy.  
 Suite 855  
 Dallas, TX 75204  
 214.520.8878  
 bgoarchitects.com

DATE  
 08-05-11

PROJECT  
 11129

SHEET NUMBER

**M-9.1**

**CLUBHOUSE MECHANICAL**

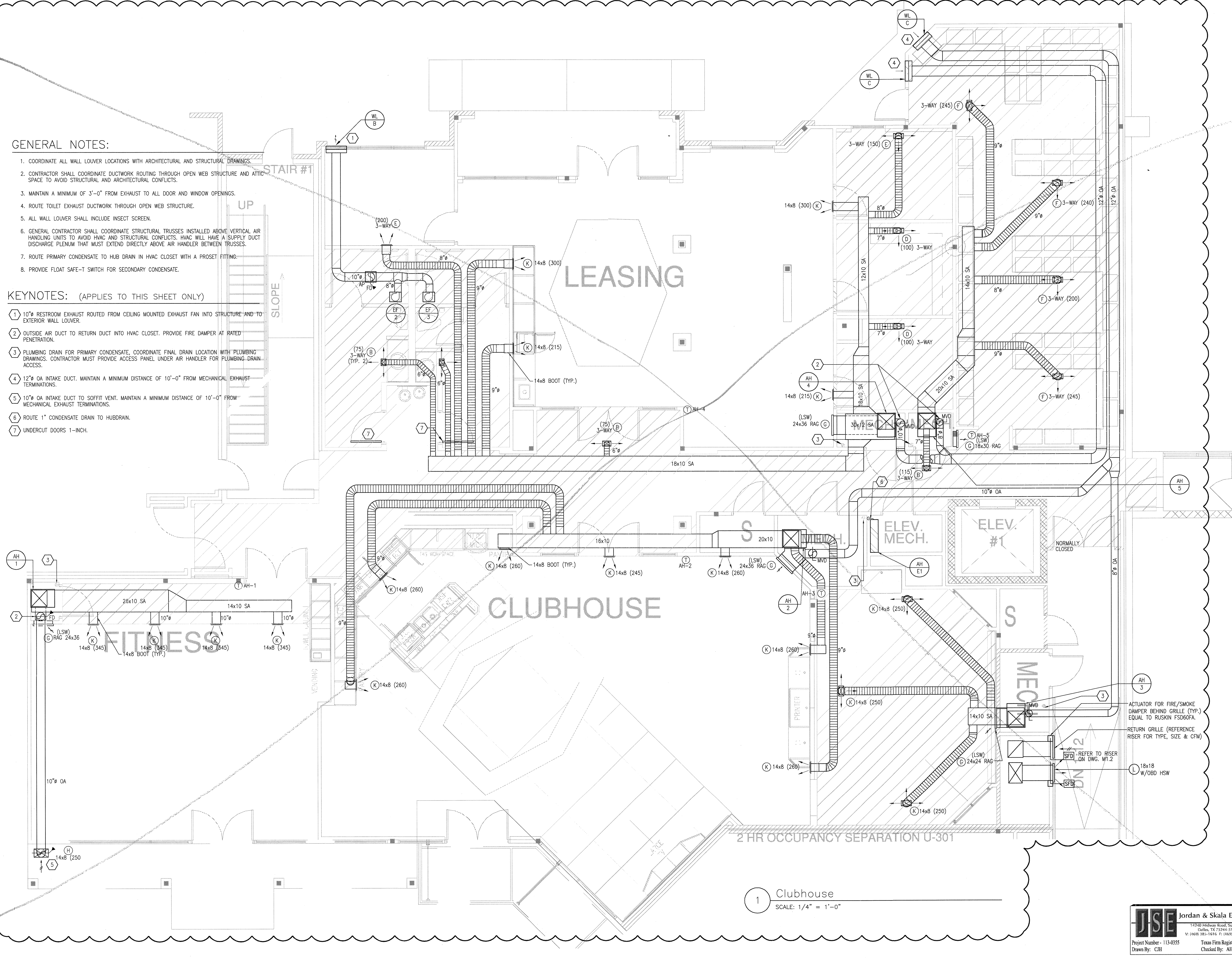
**JSE** Jordan & Skala Engineers  
 14240 Midway Road, Suite 110  
 Dallas, TX 75244-5138  
 V: (469) 383-1818 F: (469) 383-1613  
 Project Number - 113-055  
 Drawn By: CJH  
 Texas Firm Registration # F-490  
 Checked By: AHS

**GENERAL NOTES:**

- COORDINATE ALL WALL LOUVER LOCATIONS WITH ARCHITECTURAL AND STRUCTURAL DRAWINGS.
- CONTRACTOR SHALL COORDINATE DUCTWORK ROUTING THROUGH OPEN WEB STRUCTURE AND ATTIC SPACE TO AVOID STRUCTURAL AND ARCHITECTURAL CONFLICTS.
- MAINTAIN A MINIMUM OF 3'-0" FROM EXHAUST TO ALL DOOR AND WINDOW OPENINGS.
- ROUTE TOILET EXHAUST DUCTWORK THROUGH OPEN WEB STRUCTURE.
- ALL WALL LOUVER SHALL INCLUDE INSECT SCREEN.
- GENERAL CONTRACTOR SHALL COORDINATE STRUCTURAL TRUSSES INSTALLED ABOVE VERTICAL AIR HANDLING UNITS TO AVOID HVAC AND STRUCTURAL CONFLICTS. HVAC WILL HAVE A SUPPLY DUCT DISCHARGE PLENUM THAT MUST EXTEND DIRECTLY ABOVE AIR HANDLER BETWEEN TRUSSES.
- ROUTE PRIMARY CONDENSATE TO HUB DRAIN IN HVAC CLOSET WITH A PROSET FITTING.
- PROVIDE FLOAT SAFE-T SWITCH FOR SECONDARY CONDENSATE.

**KEYNOTES: (APPLIES TO THIS SHEET ONLY)**

- 10" RESTROOM EXHAUST ROUTED FROM CEILING MOUNTED EXHAUST FAN INTO STRUCTURE AND TO EXTERIOR WALL LOUVER.
- OUTSIDE AIR DUCT TO RETURN DUCT INTO HVAC CLOSET. PROVIDE FIRE DAMPER AT RATED PENETRATION.
- PLUMBING DRAIN FOR PRIMARY CONDENSATE, COORDINATE FINAL DRAIN LOCATION WITH PLUMBING DRAWINGS. CONTRACTOR MUST PROVIDE ACCESS PANEL UNDER AIR HANDLER FOR PLUMBING DRAIN ACCESS.
- 12" OA INTAKE DUCT. MAINTAIN A MINIMUM DISTANCE OF 10'-0" FROM MECHANICAL EXHAUST TERMINATIONS.
- 10" OA INTAKE DUCT TO SOFFIT VENT. MAINTAIN A MINIMUM DISTANCE OF 10'-0" FROM MECHANICAL EXHAUST TERMINATIONS.
- ROUTE 1" CONDENSATE DRAIN TO HUB DRAIN.
- UNDERCUT DOORS 1-INCH.



1 Clubhouse  
 SCALE: 1/4" = 1'-0"