



REVISIONS	
1	9-2-2011 DESIGN REVISIONS
2	9-13-2011 ANSI/FHA COMMENTS
3	9-23-2011 DESIGN REVISIONS
4	10-17-2011 CONSTRUCTION ISSUE
5	12-21-2011 DESIGN REVISIONS
6	1-17-2012 DESIGN REVISIONS
7	2-15-2012 TRANSFORMER REVISIONS
8	3-27-2012 CLUBHOUSE REVISIONS
9	4-17-2012 COORDINATION

**KELLER SPRINGS LOFTS**  
LOFT APARTMENTS IN ADDISON, TEXAS

10	5-15-2012 COORDINATION
11	5-30-2012 SITE COORDINATION
12	6-01-12 LIGHTING REVISIONS
13	6-29-12 SITE COORDINATION
14	9-05-12 CLUB REVISIONS

**BGO architects**  
4144 N. Central Expy. Suite 855  
Dallas, TX 75204  
214.520.8878  
bgoarchitects.com

DATE  
08-05-11

PROJECT  
11129

SHEET NUMBER  
**M-9.1**  
**CLUBHOUSE MECHANICAL**

**JSE** Jordan & Skala Engineers  
17833 N. Dallas Parkway, Suite 320  
Dallas, TX 75247-4857  
V: (469) 383-1616 Web: www.jordanskala.com  
Project Number - 113-0355 Texas Firm Registration # F-4990  
Drawn By: CJH Checked By: AHS

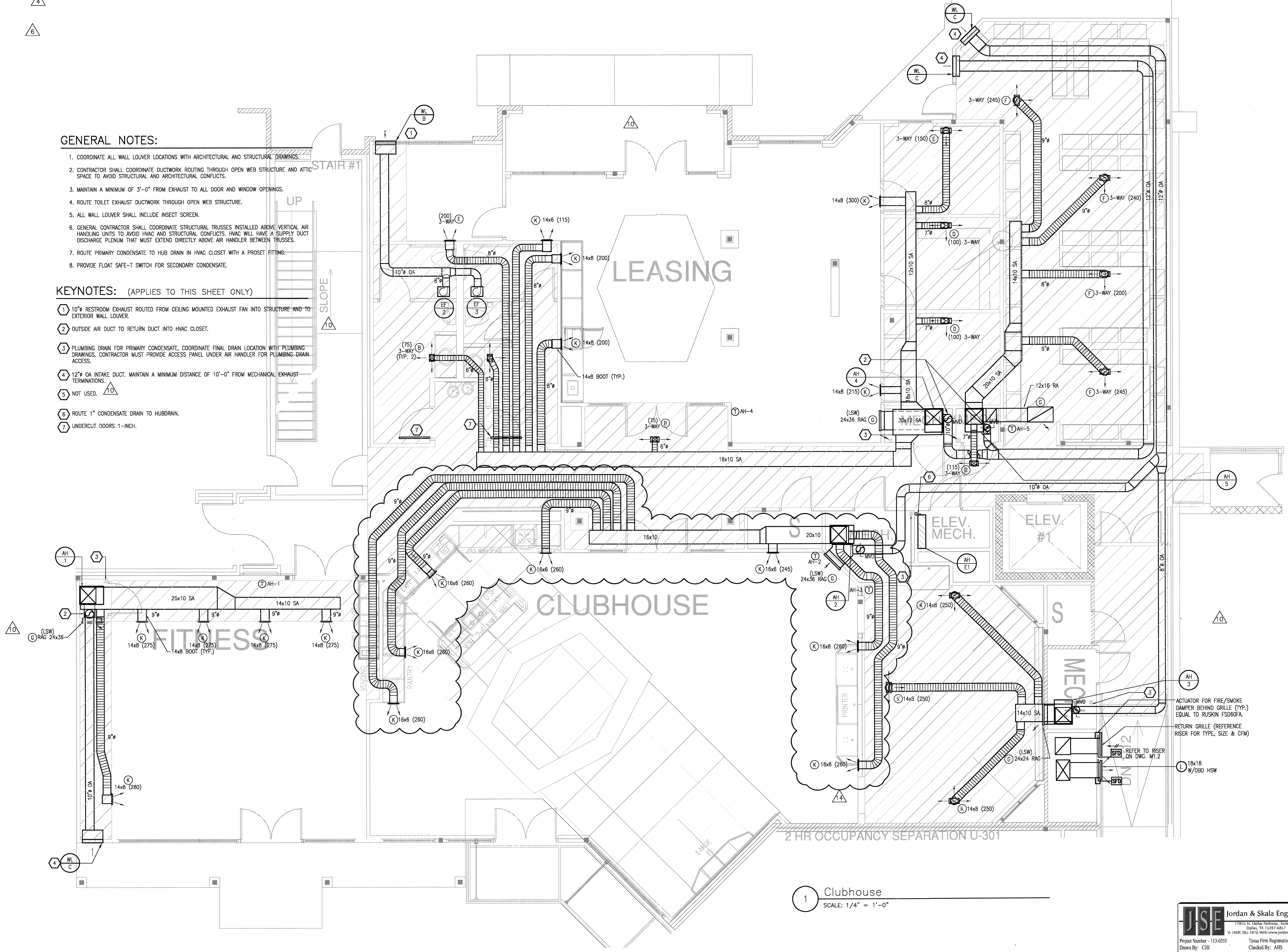
**GENERAL NOTES:**

- COORDINATE ALL WALL LOUVER LOCATIONS WITH ARCHITECTURAL AND STRUCTURAL DRAWINGS.
- CONTRACTOR SHALL COORDINATE DUCTWORK ROUTING THROUGH OPEN WEB STRUCTURE AND ATTIC SPACE TO AVOID STRUCTURAL AND ARCHITECTURAL CONFLICTS.
- MAINTAIN A MINIMUM OF 3'-0" FROM EXHAUST TO ALL DOOR AND WINDOW OPENINGS.
- ROUTE TOILET EXHAUST DUCTWORK THROUGH OPEN WEB STRUCTURE.
- ALL WALL LOUVER SHALL INCLUDE INSECT SCREEN.
- GENERAL CONTRACTOR SHALL COORDINATE STRUCTURAL TRUSSES INSTALLED ABOVE VERTICAL AIR HANDLING UNITS TO AVOID HVAC AND STRUCTURAL CONFLICTS. HVAC WILL HAVE A SUPPLY DUCT DISCHARGE PLENUM THAT MUST EXTEND DIRECTLY ABOVE AIR HANDLER BETWEEN TRUSSES.
- ROUTE PRIMARY CONDENSATE TO HUB DRAIN IN HVAC CLOSET WITH A PROSET FITTING.
- PROVIDE FLOAT SAFE-T SWITCH FOR SECONDARY CONDENSATE.

**KEYNOTES: (APPLIES TO THIS SHEET ONLY)**

- 10" RESTROOM EXHAUST ROUTED FROM CEILING MOUNTED EXHAUST FAN INTO STRUCTURE AND TO EXTERIOR WALL LOUVER.
- OUTSIDE AIR DUCT TO RETURN DUCT INTO HVAC CLOSET.
- PLUMBING DRAIN FOR PRIMARY CONDENSATE, COORDINATE FINAL DRAIN LOCATION WITH PLUMBING DRAWINGS. CONTRACTOR MUST PROVIDE ACCESS PANEL UNDER AIR HANDLER FOR PLUMBING DRAIN ACCESS.
- 12" OA INTAKE DUCT. MAINTAIN A MINIMUM DISTANCE OF 10'-0" FROM MECHANICAL EXHAUST TERMINATIONS.
- NOT USED.
- ROUTE 1" CONDENSATE DRAIN TO HUBDRAIN.
- UNDERCUT DOORS 1-INCH.

4  
6



1 Clubhouse  
SCALE: 1/4" = 1'-0"