

REVISIONS		
△ 9-2-2011	DESIGN REVISIONS	
△ 2	ANSI/FHA COMMENTS	
△ 9-13-2011	DESIGN REVISIONS	
△ 3	DESIGN REVISIONS	
△ 9-23-2011	CONSTRUCTION ISSUE	
△ 4	DESIGN REVISIONS	
△ 10-17-2011	DESIGN REVISIONS	
△ 5	DESIGN REVISIONS	
△ 12-21-2011	DESIGN REVISIONS	
△ 6	DESIGN REVISIONS	
△ 1-17-2012	TRANSFORMER REVISIONS	
△ 7	TRANSFORMER REVISIONS	
△ 2-15-2012	REVISIONS	
△ 8	CLUBHOUSE REVISIONS	
△ 3-27-2012	REVISIONS	
△ 9	COORDINATION	
△ 4-17-2012		

**KELLER SPRINGS LOFTS**

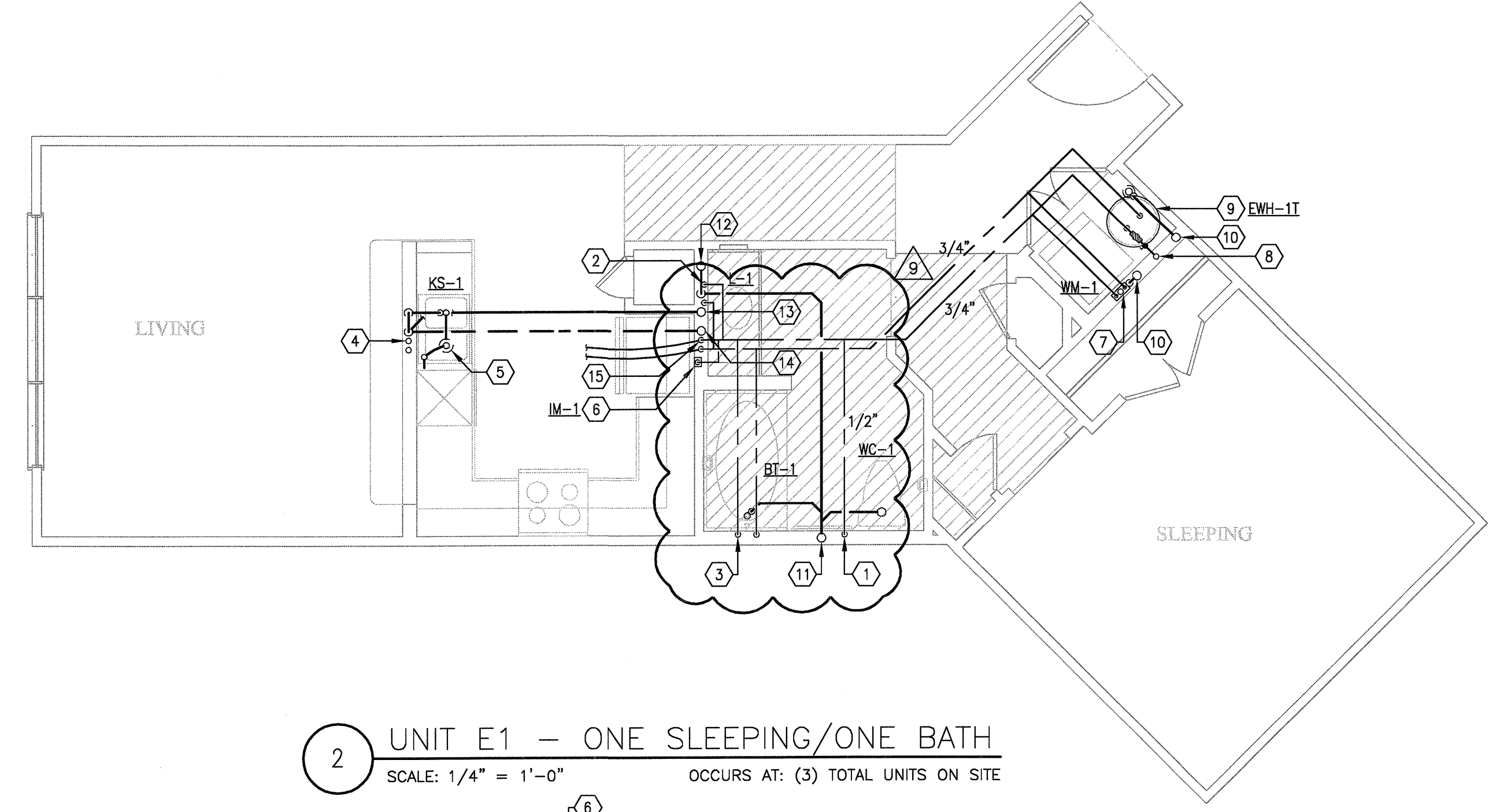
LOFT APARTMENTS IN ADDISON, TEXAS

**BGO architects**  
 4144 N. Central Expy. Suite 855  
 Dallas, TX 75204  
 214.520.8878  
 bg architects.com

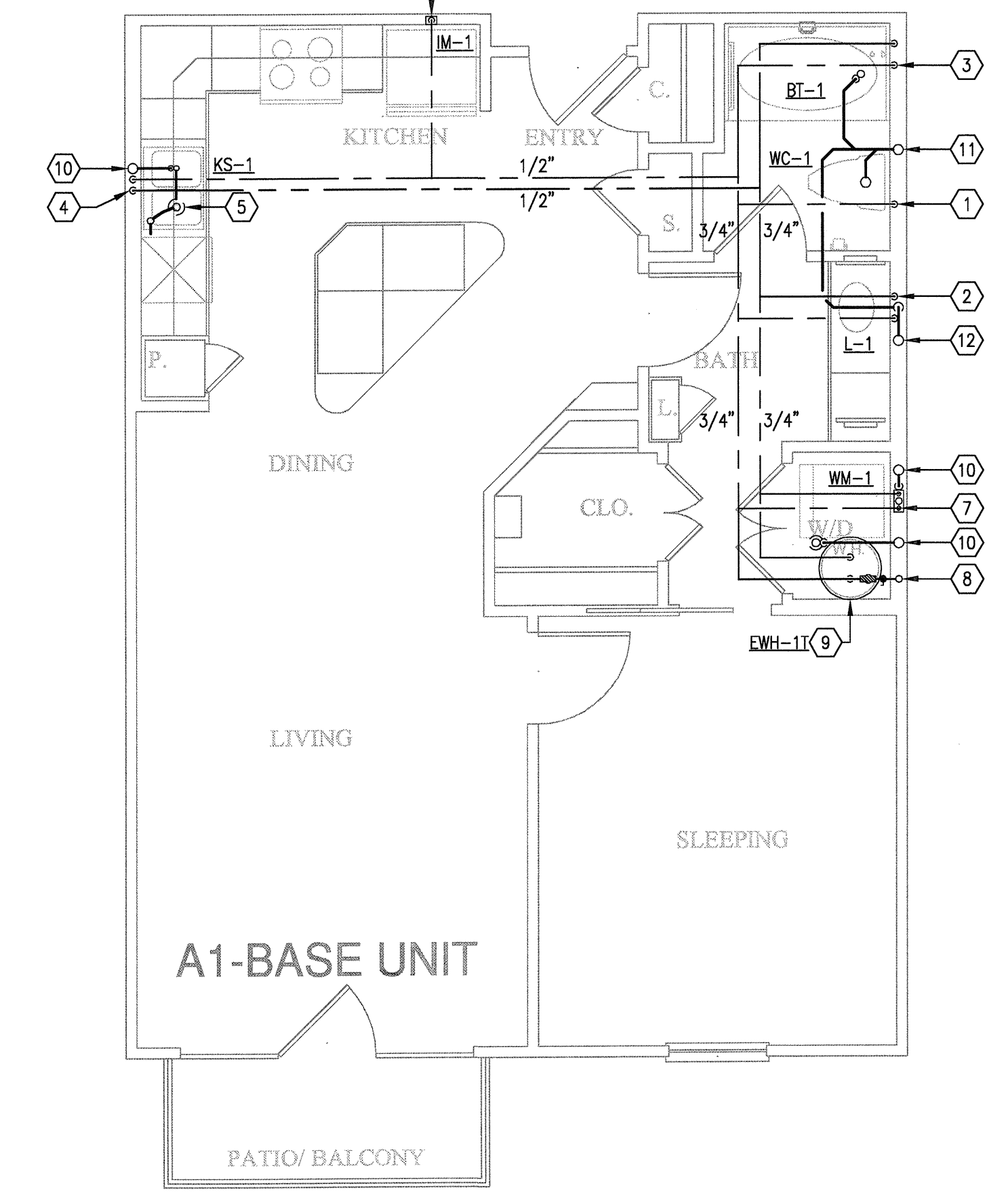
DATE  
08-05-11

PROJECT  
11129

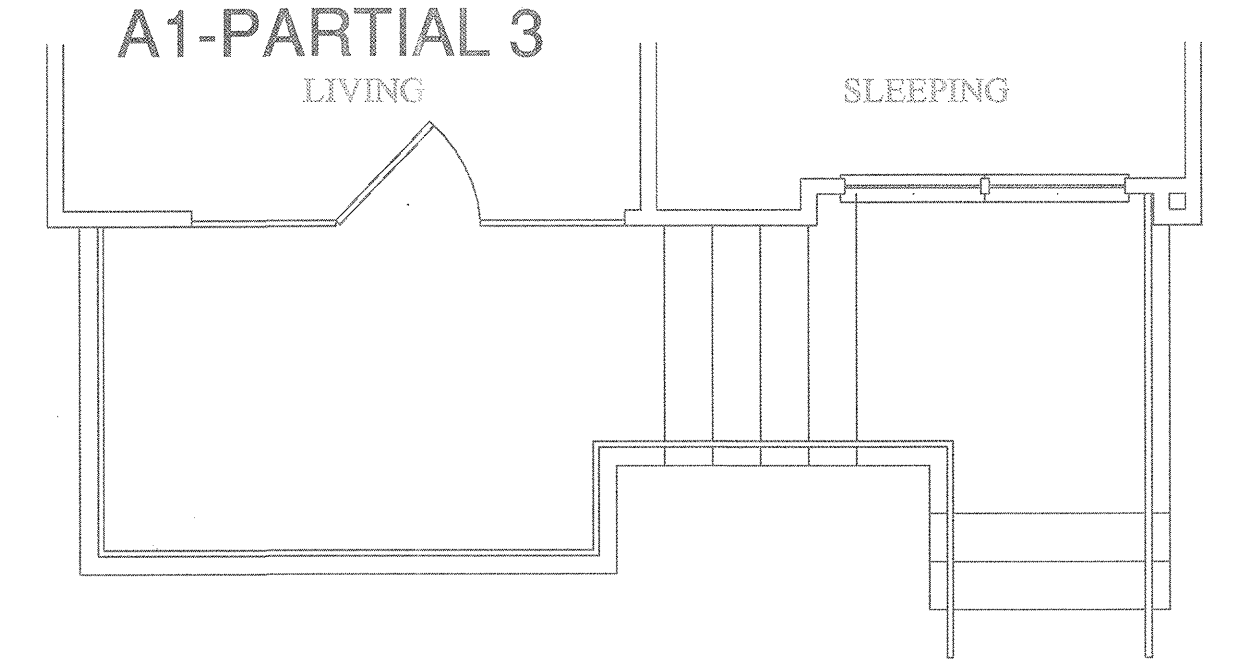
SHEET NUMBER  
**P-2.1**



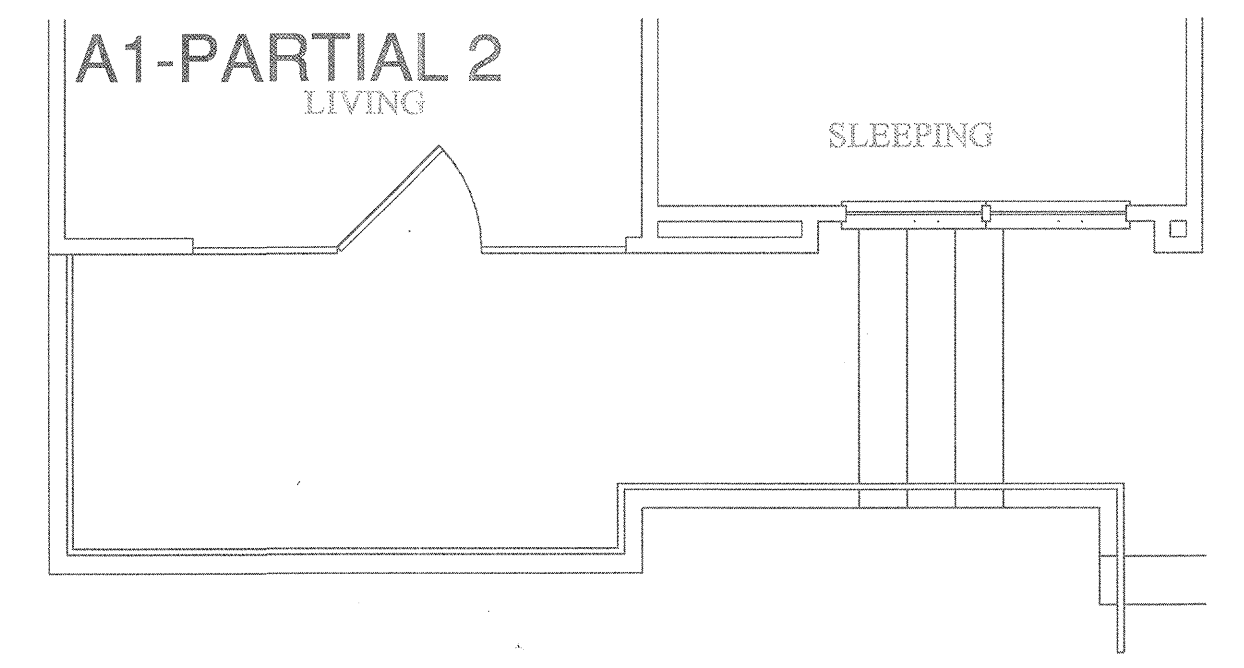
**2 UNIT E1 - ONE SLEEPING/ONE BATH**  
 SCALE: 1/4" = 1'-0" OCCURS AT: (3) TOTAL UNITS ON SITE



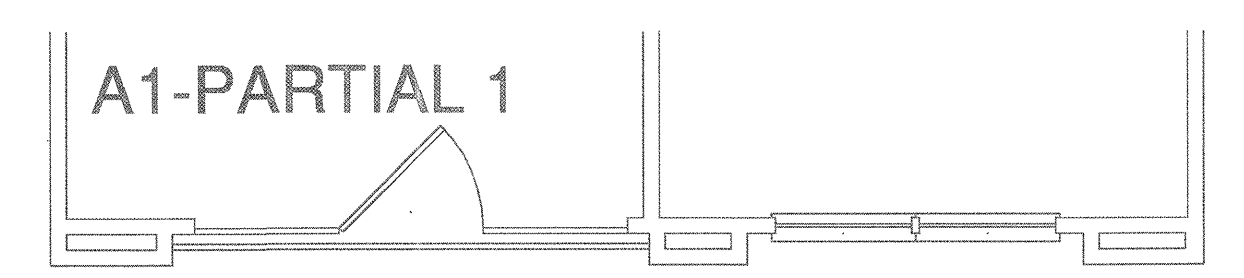
**1 UNIT A1 - ONE SLEEPING/ONE BATH**  
 SCALE: 1/4" = 1'-0" OCCURS AT: (19) TOTAL UNITS ON SITE



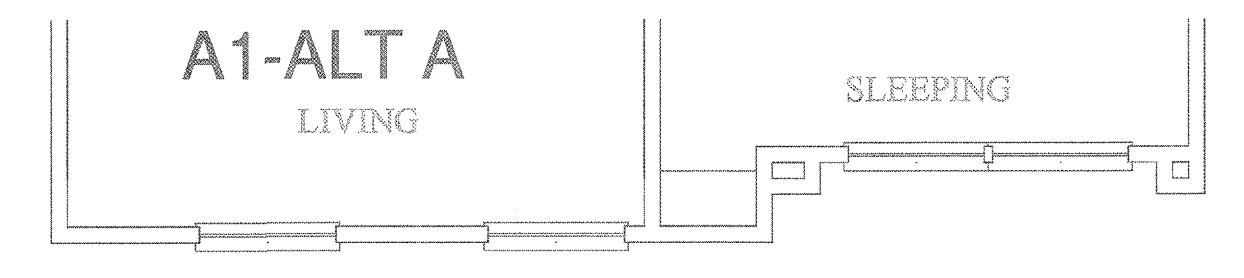
**6 UNIT A1 - PARTIAL 3**  
 SCALE: 1/4" = 1'-0" OCCURS AT: (1) TOTAL UNITS ON SITE



**5 UNIT A1 - PARTIAL 2**  
 SCALE: 1/4" = 1'-0" OCCURS AT: (5) TOTAL UNITS ON SITE

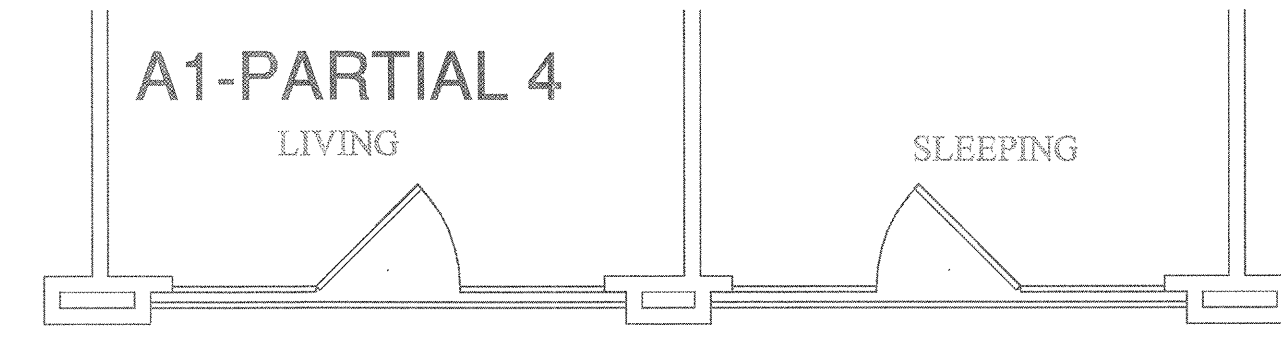


**4 UNIT A1 - PARTIAL 1**  
 SCALE: 1/4" = 1'-0" OCCURS AT: (8) TOTAL UNITS ON SITE



**3 UNIT A1 - ALT A**  
 SCALE: 1/4" = 1'-0" OCCURS AT: (18) TOTAL UNITS ON SITE

- KEY NOTES:**
- ① 1/2" CW DOWN IN WALL TO WATER CLOSET.
  - ② 1/2" H & CW DOWN IN WALL TO LAVATORY.
  - ③ 1/2" H & CW DOWN IN WALL TO BATHTUB/SHOWER. 3/4" H & CW DOWN IN WALL IF SERVING BATHTUB AND SHOWER.
  - ④ 1/2" H & CW TO SINK AND DISHWASHER. PROVIDE 1/2"x3/8" STOP ON CW. PROVIDE 1/2"x3/8"x3/8" STOP ON HW. 3/8" H & CW TO SINK FAUCET, 3/8" HW TO DISHWASHER.
  - ⑤ DISPOSAL BELOW SINK WITH DISHWASHER WASTE CONNECTION. CONNECT DRAIN THRU AIR GAP TO DISPOSAL. DISPOSAL BY G.C. AND INSTALLED BY PLUMBING CONTRACTOR.
  - ⑥ 1/2" CW DOWN IN WALL TO ICE MAKER VALVE AND BOX.
  - ⑦ WASHING MACHINE CONNECTION BOX 2" WASTE, 1/2" H & CW.
  - ⑧ DOMESTIC WATER RISER. PROVIDE ISOLATION VALVE, REMOTE READ SUB-METER, AND PRV IF REQUIRED. REFER TO RISER DIAGRAM FOR SIZES.
  - ⑨ ELECTRIC WATER HEATER. REFER TO DETAILS AND SCHEDULE.
  - ⑩ 3" SANITARY WASTE/VENT RISER PER IPC SEC 910.
  - ⑪ 3" SANITARY WASTE RISER.
  - ⑫ 3" SANITARY VENT RISER.
  - ⑬ 2" SANITARY WASTE RISER.
  - ⑭ 2" SANITARY VENT RISER.
  - ⑮ 1/2" H & CW DOWN IN WALL TO BELOW FLOOR TO SERVE ISLAND SINK.



**7 UNIT A1 - PARTIAL 4**  
 SCALE: 1/4" = 1'-0" OCCURS AT: (3) TOTAL UNITS ON SITE