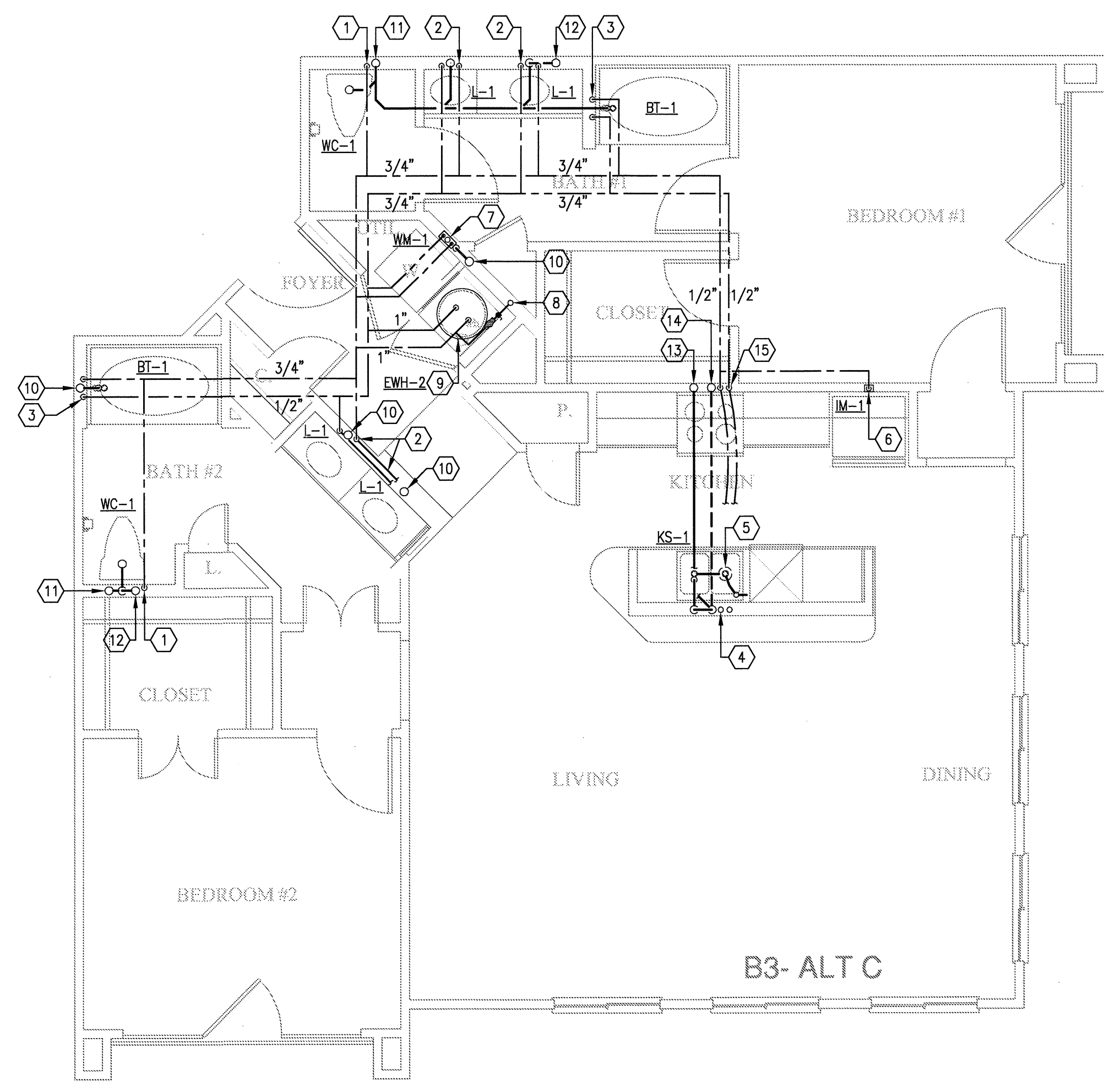


REVISIONS	
1	9-2-2011 DESIGN REVISIONS
2	9-13-2011 ANS/FHA COMMENTS
3	9-23-2011 DESIGN REVISIONS
4	10-17-2011 CONSTRUCTION ISSUE



**KEY NOTES:**

- 1 1/2" CW DOWN IN WALL TO WATER CLOSET.
- 2 1/2" H & CW DOWN IN WALL TO LAVATORY.
- 3 1/2" H & CW DOWN IN WALL TO BATHTUB/SHOWER. 3/4" H & CW DOWN IN WALL IF SERVING BATHTUB AND SHOWER.
- 4 1/2" H & CW TO SINK AND DISHWASHER. PROVIDE 1/2"x3/8" STOP ON CW. PROVIDE 1/2"x3/8"x3/8" STOP ON HW. 3/8" H & CW TO SINK FAUCET, 3/8" HW TO DISHWASHER.
- 5 DISPOSAL BELOW SINK WITH DISHWASHER WASTE CONNECTION. CONNECT DRAIN THRU AIR GAP TO DISPOSAL. DISPOSAL BY G.C. AND INSTALLED BY PLUMBING CONTRACTOR.
- 6 1/2" CW DOWN IN WALL TO ICE MAKER VALVE AND BOX.
- 7 WASHING MACHINE CONNECTION BOX 2" WASTE, 1/2" H & CW.
- 8 DOMESTIC WATER RISER. PROVIDE ISOLATION VALVE, REMOTE READ SUB-METER, AND PRV IF REQUIRED. REFER TO RISER DIAGRAM FOR SIZES.
- 9 ELECTRIC WATER HEATER. REFER TO DETAILS AND SCHEDULE.
- 10 3" SANITARY WASTE/VENT RISER PER IPC SEC 910.
- 11 3" SANITARY WASTE RISER.
- 12 3" SANITARY VENT RISER.
- 13 2" SANITARY WASTE RISER.
- 14 2" SANITARY VENT RISER.
- 15 1/2" H & CW DOWN IN WALL TO BELOW FLOOR TO SERVE ISLAND SINK.

1 UNIT B3-1 - TWO BEDROOM/TWO BATH  
 SCALE: 1/4" = 1'-0" OCCURS AT: (1) TOTAL UNITS ON SITE

**KELLER SPRINGS LOFTS**  
 LOFT APARTMENTS IN ADDISON, TEXAS

**BGO**  
 architects  
 4144 N. Central Expy.  
 Suite 855  
 Dallas, TX 75204  
 214.520.8878  
 bgoarchitects.com

DATE  
08-05-11

PROJECT  
11129

SHEET NUMBER

**P-2.10**

**JSE** Jordan & Skala Engineers  
 12740 Ardmore Road, Suite 350  
 Dallas, TX 75244-5138  
 V: (214) 385-1676 F: (214) 385-1615  
 Project Number - 113-055 Texas Firm Registration # F-4990  
 Drawn By: CV Checked By: RC