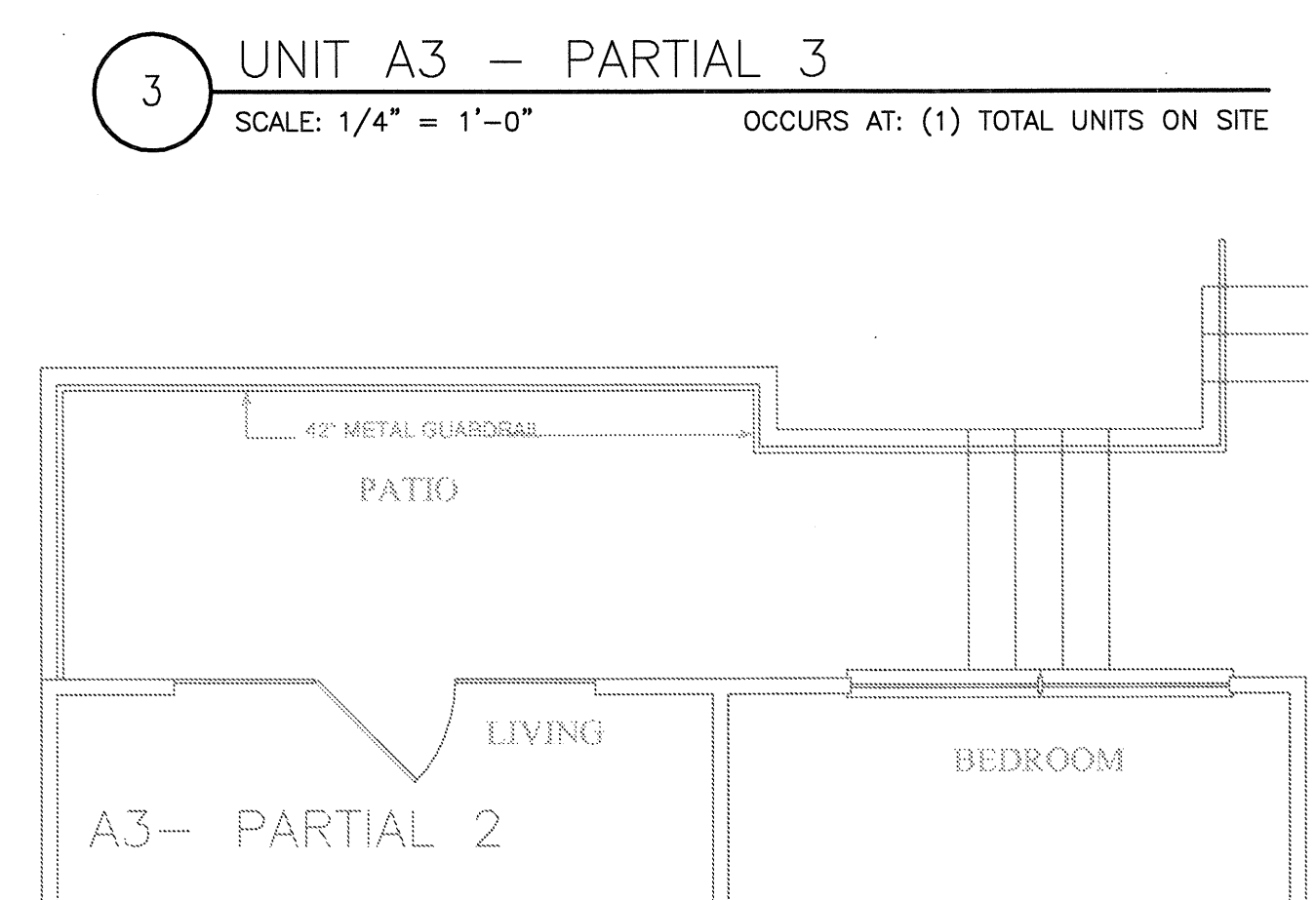
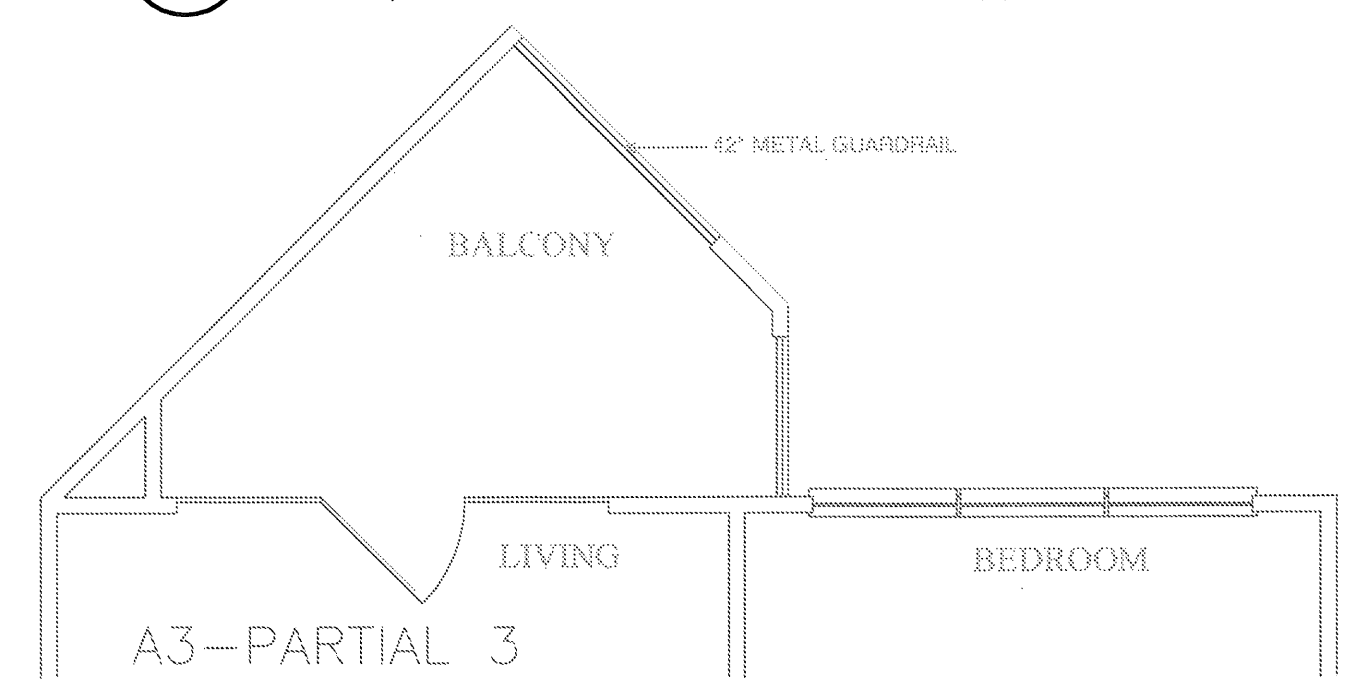
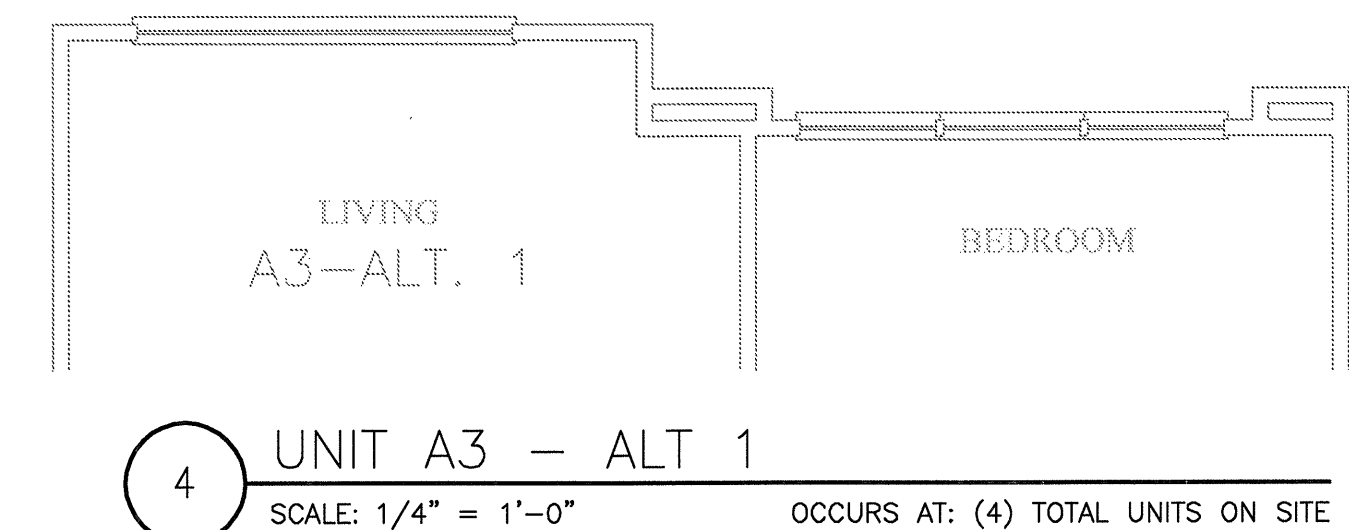
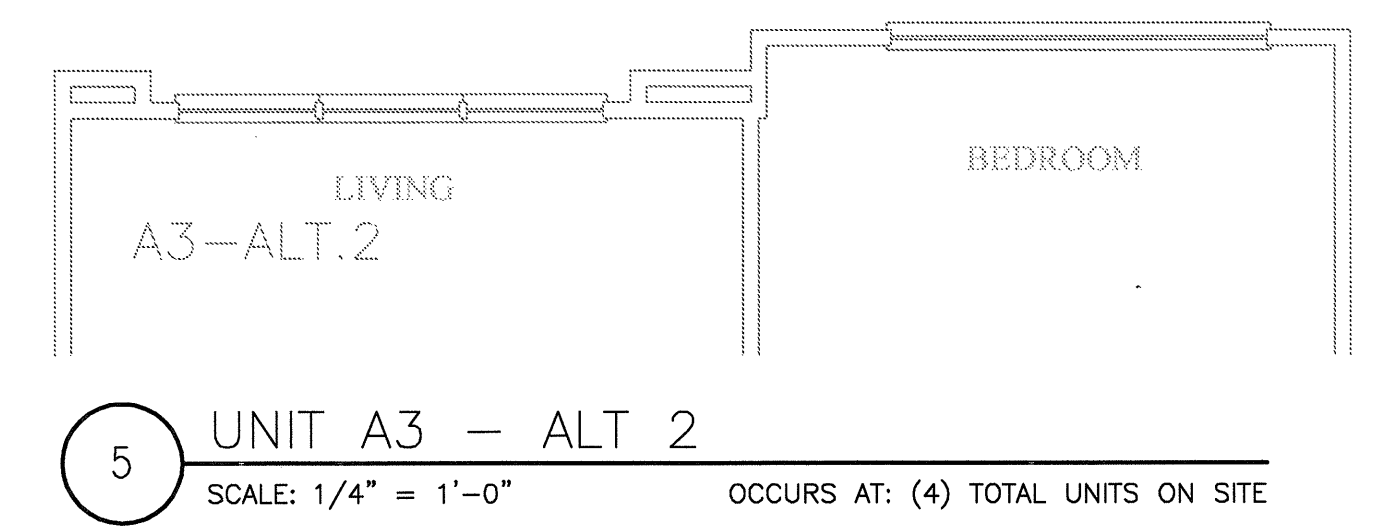
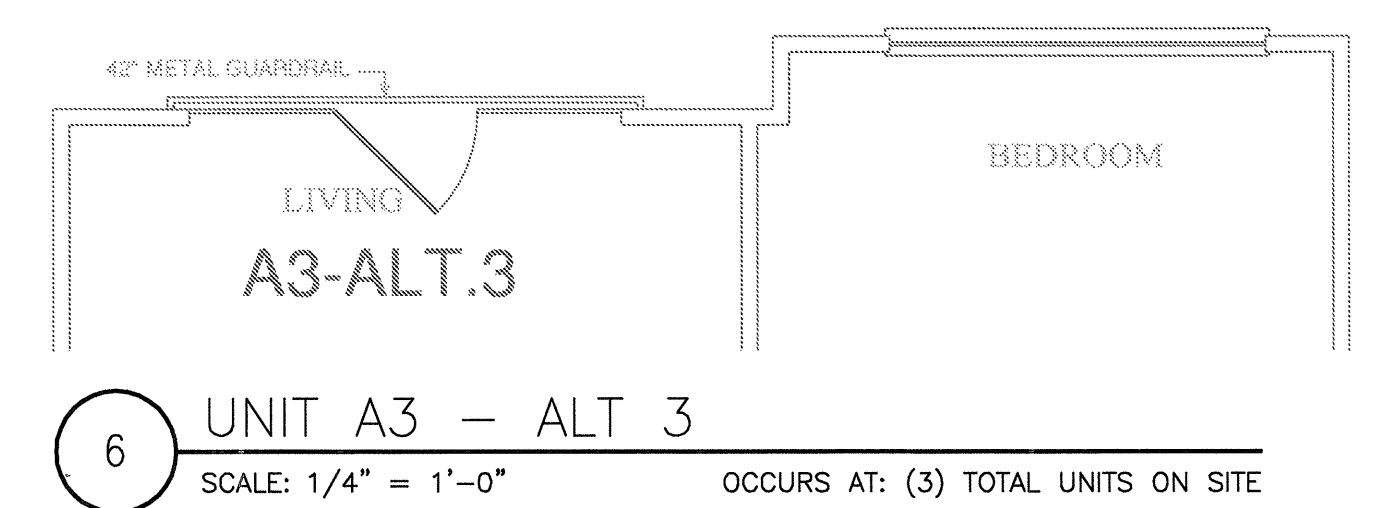
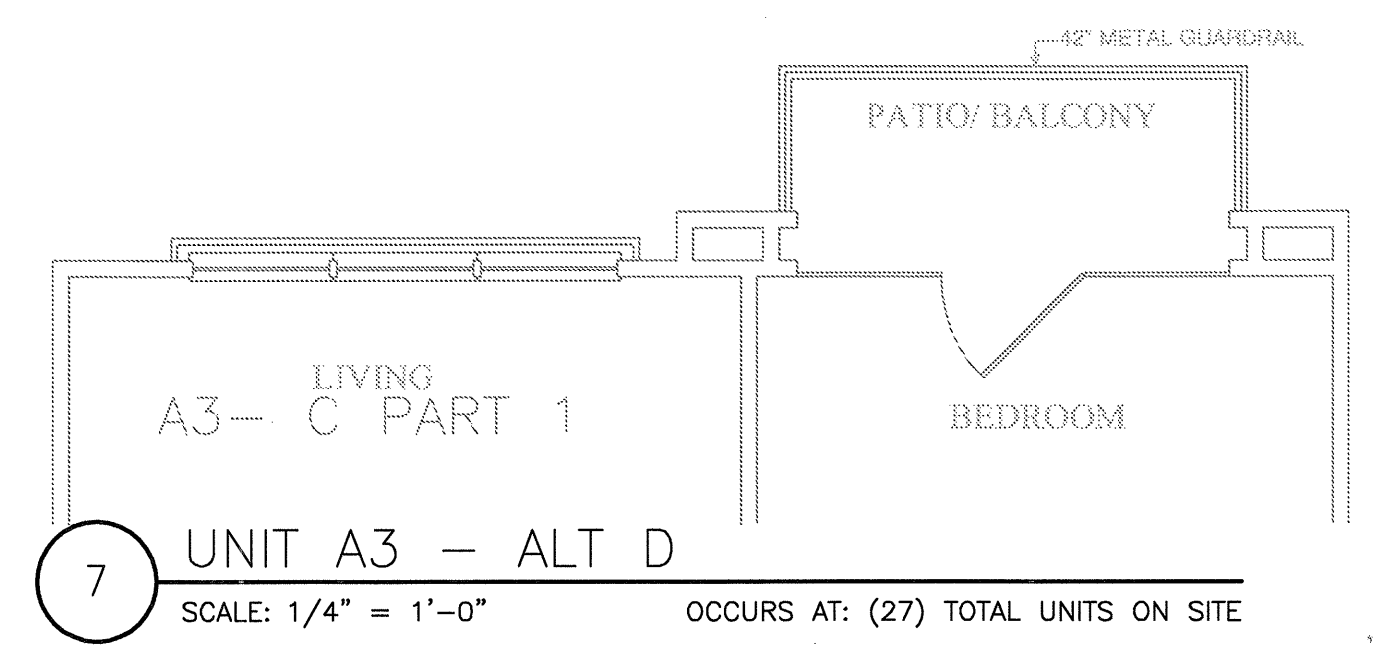
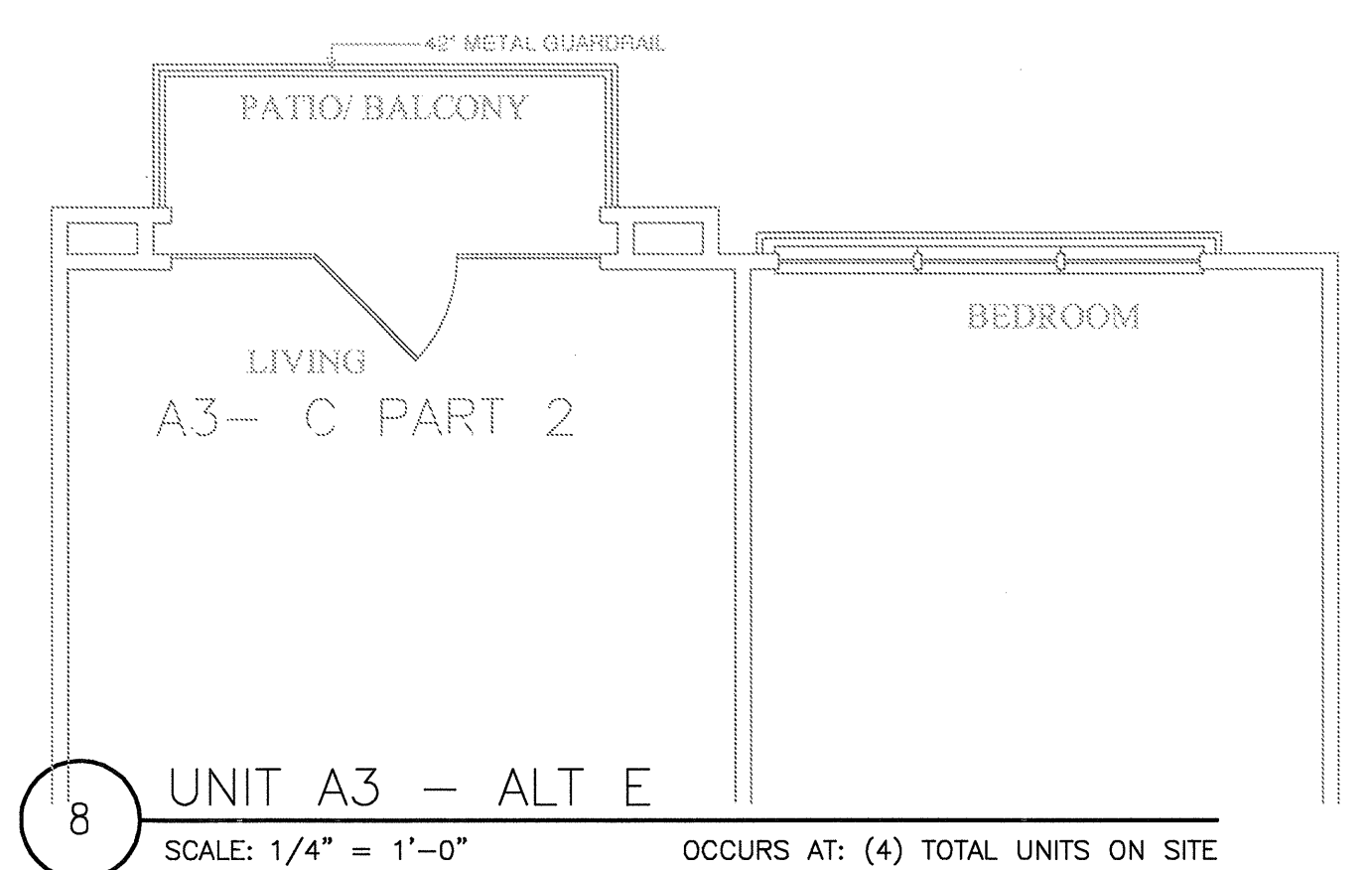
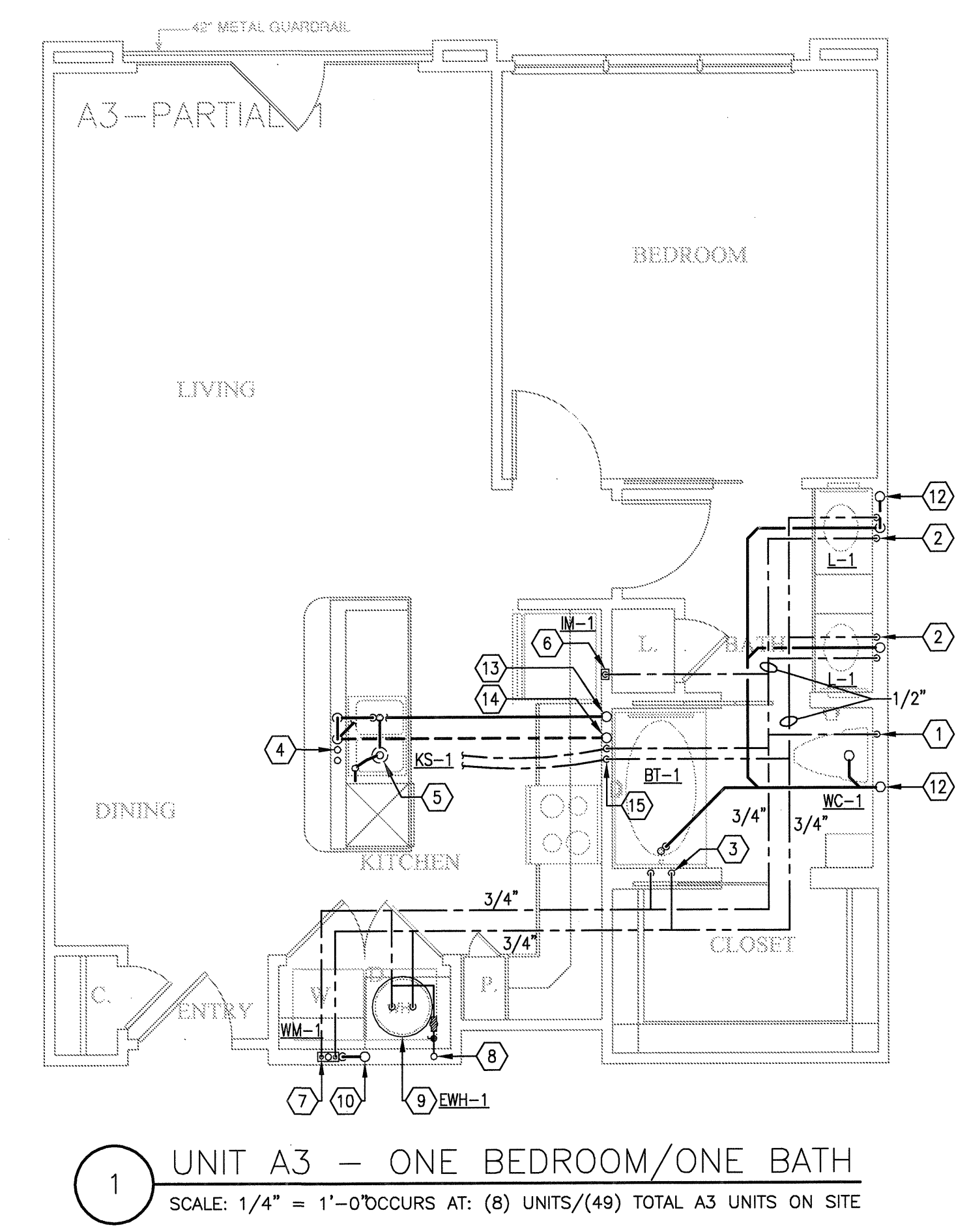


REVISIONS		
1	9-2-2011	DESIGN REVISIONS
2	9-13-2011	ANSI/FHA COMMENTS
3	9-23-2011	DESIGN REVISIONS
4	10-17-2011	CONSTRUCTION ISSUE



KEY NOTES:

- 1 1/2" CW DOWN IN WALL TO WATER CLOSET.
- 2 1/2" H & CW DOWN IN WALL TO LAVATORY.
- 3 1/2" H & CW DOWN IN WALL TO BATHTUB/SHOWER. 3/4" H & CW DOWN IN WALL IF SERVING BATHTUB AND SHOWER.
- 4 1/2" H & CW TO SINK AND DISHWASHER. PROVIDE 1/2"x3/8" STOP ON CW. PROVIDE 1/2"x3/8"x3/8" STOP ON HW. 3/8" H & CW TO SINK FAUCET. 3/8" HW TO DISHWASHER.
- 5 DISPOSAL BELOW SINK WITH DISHWASHER WASTE CONNECTION. CONNECT DRAIN THRU AIR GAP TO DISPOSAL. DISPOSAL BY G.C. AND INSTALLED BY PLUMBING CONTRACTOR.
- 6 1/2" CW DOWN IN WALL TO ICE MAKER VALVE AND BOX.
- 7 WASHING MACHINE CONNECTION BOX 2" WASTE, 1/2" H & CW.
- 8 DOMESTIC WATER RISER. PROVIDE ISOLATION VALVE, REMOTE READ SUB-METER, AND PRV IF REQUIRED. REFER TO RISER DIAGRAM FOR SIZES.
- 9 ELECTRIC WATER HEATER. REFER TO DETAILS AND SCHEDULE.
- 10 3" SANITARY WASTE/VENT RISER PER IPC SEC 910.
- 11 3" SANITARY WASTE RISER.
- 12 3" SANITARY VENT RISER.
- 13 2" SANITARY WASTE RISER.
- 14 2" SANITARY VENT RISER.
- 15 1/2" H & CW DOWN IN WALL TO BELOW FLOOR TO SERVE ISLAND SINK.



KELLER SPRINGS LOFTS
LOFT APARTMENTS IN ADDISON, TEXAS

BGO architects
4144 N. Central Expy. Suite 855
Dallas, TX 75204
214.520.8878
bgoarchitects.com

DATE
08-05-11

PROJECT
11129

SHEET NUMBER
P-2.3

JSE Jordan & Skala Engineers
14240 Midway Road, Suite 350
Dallas, TX 75244-5136
V: (469) 383-1616 F: (469) 383-1615
Project Number - 113-0355 Texas Firm Registration # F-4990
Drawn By: CV Checked By: RC